

Product datasheet for **RC224177**

RSPO2 (NM_178565) Human Tagged ORF Clone

Product data:

Product Type: Expression Plasmids
Product Name: RSPO2 (NM_178565) Human Tagged ORF Clone
Tag: Myc-DDK
Symbol: RSPO2
Synonyms: CRISTIN2; HHRRD; TETAMS2
Mammalian Cell Selection: Neomycin
Vector: pCMV6-Entry (PS100001)
E. coli Selection: Kanamycin (25 ug/mL)
ORF Nucleotide Sequence: >RC224177 representing NM_178565
Red=Cloning site Blue=ORF Green=Tags(s)

TTTTGTAATACGACTCACTATAGGGCGCCGGGAATTCGTCGACTGGATCCGGTACCGAGGAGATCTGCC
GCC**CGATCGCC**

ATGCAGTTTCGCCTTTTCTCCTTTGCCCTCATCATTCTGAACTGCATGGATTACAGCCACTGCCAAGGCA
ACCGATGGAGACGCAGTAAGCGAGCTAGTTATGTATCAAATCCCATTTGCAAGGGTTGTTTGTCTTGTTT
AAAGGACAATGGGTGTAGCCGATGTCAACAGAAGTTGTTCTTCTCCTTCGAAGAGAAGGGATGCGCCAG
TATGGAGAGTGCCTGCATTCTGCCATCCGGTACTATGGACACCGAGCCCAGATATGAACAGATGTG
CAAGATGCAGAATAGAAACTGTGATTCTTGCTTTAGCAAAGACTTTTGTACCAAGTGCAAAGTAGGCTT
TTATTTGCATAGAGGCCGTTGCTTTGATGAATGTCCAGATGGTTTTGCACCATTAGAAGAAACCATGGAA
TGTGTGGAAGGATGTGAAGTTGGTCATTGGAGCGAATGGGGAAGTTGTAGCAGAAAATAATCGCACATGTG
GATTTAAATGGGGTCTGGAAACAGAACACGGCAAATTGTTAAAAAGCCAGTAAAAGACACAATACCGTG
TCCAACCATTTGCTGAATCCAGGAGATGCAAGATGACAAATGAGGCATTGTCCAGGAGGGAAGAGAACCA
AAGGCGAAGGAGAAGAGGAACAAGAAAAAGAAAGGAAGCTGATAGAAAGGGCCAGGAGCAACACAGCG
TCTTCTAGCTACAGACAGAGCTAACCAA

ACGCGTACGCGGCCGCTCGAGCAGAACTCATCTCAGAAGAGGATCTGGCAGCAAATGATATCCTGGATT
ACAAGGATGACGACGATAAGGTTTAA



[View online »](#)

Protein Sequence: >RC224177 representing NM_178565
Red=Cloning site Green=Tags(s)

MQFRLFSFALIILNCMDYSHCQGNRWRRSKRASYVSNPICKGCLSCSKDNGCSRCQQKLFLLRREGMRQ
 YGEC LHSCPSGYGHRAPDMNRCARCRIENCDSFC SKDFCTKCKVGFYLHRGRCFDECPDGFAPLEETME
 CVEGCEVGHWSEWGTCSRNNRTCGFKWGLETRTRQIVKKPVKDTIPCPTIAESRRCKMTRHCPGGKRTP
 KAKEKRNKKKKRKLIERAQEQHSVFLATDRANQ

TRTRPLEQKLISEEDLAANDILDYKDDDDKV

Chromatograms: https://cdn.origene.com/chromatograms/mg2553_c07.zip

Restriction Sites: SgfI-MluI

Cloning Scheme:



ACCN: NM_178565

ORF Size: 729 bp

OTI Disclaimer: The molecular sequence of this clone aligns with the gene accession number as a point of reference only. However, individual transcript sequences of the same gene can differ through naturally occurring variations (e.g. polymorphisms), each with its own valid existence. This clone is substantially in agreement with the reference, but a complete review of all prevailing variants is recommended prior to use. [More info](#)

OTI Annotation: This clone was engineered to express the complete ORF with an expression tag. Expression varies depending on the nature of the gene.

Components: The ORF clone is ion-exchange column purified and shipped in a 2D barcoded Matrix tube containing 10ug of transfection-ready, dried plasmid DNA (reconstitute with 100 ul of water).

Reconstitution Method:

1. Centrifuge at 5,000xg for 5min.
2. Carefully open the tube and add 100ul of sterile water to dissolve the DNA.
3. Close the tube and incubate for 10 minutes at room temperature.
4. Briefly vortex the tube and then do a quick spin (less than 5000xg) to concentrate the liquid at the bottom.
5. Store the suspended plasmid at -20°C. The DNA is stable for at least one year from date of shipping when stored at -20°C.

Note: Plasmids are not sterile. For experiments where strict sterility is required, filtration with 0.22um filter is required.

RefSeq: [NM_178565.3](#), [NP_848660.2](#)

RefSeq Size: 2842 bp

RefSeq ORF: 732 bp

Locus ID: 340419

UniProt ID: [Q6UXX9](#)

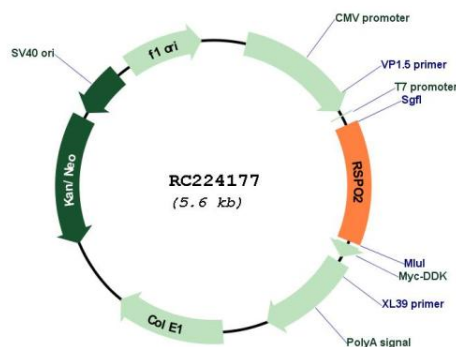
Cytogenetics: 8q23.1

Protein Families: Secreted Protein

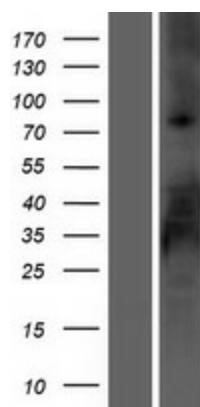
MW: 28.1 kDa

Gene Summary: This gene encodes a member of the R-spondin family of proteins. These proteins are secreted ligands of leucine-rich repeat containing G protein-coupled receptors that enhance Wnt signaling through the inhibition of ubiquitin E3 ligases. A chromosomal translocation including this locus that results in the formation of a gene fusion has been identified in multiple human cancers. Alternative splicing results in multiple transcript variants. [provided by RefSeq, Dec 2015]

Product images:



Circular map for RC224177



Western blot validation of overexpression lysate (Cat# [LY403609]) using anti-DDK antibody (Cat# [TA50011-100]). Left: Cell lysates from untransfected HEK293T cells; Right: Cell lysates from HEK293T cells transfected with RC224177 using transfection reagent MegaTran 2.0 (Cat# [TT210002]).