

## Product datasheet for RC224168L3

### RNF170 (NM\_030954) Human Tagged Lenti ORF Clone

#### Product data:

Product Type:	Expression Plasmids
Product Name:	RNF170 (NM_030954) Human Tagged Lenti ORF Clone
Tag:	Myc-DDK
Symbol:	RNF170
Synonyms:	ADSA; SNAX1
Mammalian Cell Selection:	Puromycin
Vector:	pLenti-C-Myc-DDK-P2A-Puro (PS100092)
E. coli Selection:	Chloramphenicol (34 ug/mL)
ORF Nucleotide Sequence:	The ORF insert of this clone is exactly the same as(RC224168).
Restriction Sites:	SgfI-MluI
Cloning Scheme:	

Cloning sites used for ORF Shuttling:



\* The last codon before the Stop codon of the ORF.

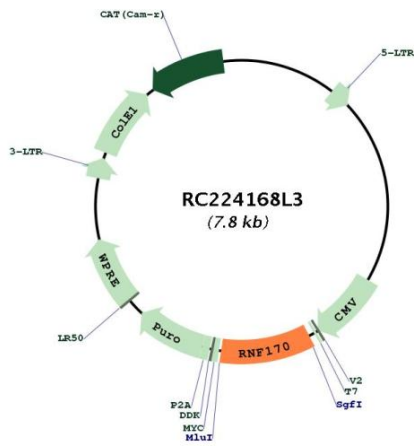
ACCN:	NM_030954
ORF Size:	774 bp



[View online »](#)

<b>OTI Disclaimer:</b>	The molecular sequence of this clone aligns with the gene accession number as a point of reference only. However, individual transcript sequences of the same gene can differ through naturally occurring variations (e.g. polymorphisms), each with its own valid existence. This clone is substantially in agreement with the reference, but a complete review of all prevailing variants is recommended prior to use. <a href="#">More info</a>
<b>OTI Annotation:</b>	This clone was engineered to express the complete ORF with an expression tag. Expression varies depending on the nature of the gene.
<b>Components:</b>	The ORF clone is ion-exchange column purified and shipped in a 2D barcoded Matrix tube containing 10ug of transfection-ready, dried plasmid DNA (reconstitute with 100 ul of water).
<b>Reconstitution Method:</b>	<ol style="list-style-type: none"><li>1. Centrifuge at 5,000xg for 5min.</li><li>2. Carefully open the tube and add 100ul of sterile water to dissolve the DNA.</li><li>3. Close the tube and incubate for 10 minutes at room temperature.</li><li>4. Briefly vortex the tube and then do a quick spin (less than 5000xg) to concentrate the liquid at the bottom.</li><li>5. Store the suspended plasmid at -20°C. The DNA is stable for at least one year from date of shipping when stored at -20°C.</li></ol>
<b>RefSeq:</b>	<a href="#">NM_030954.2</a> , <a href="#">NP_112216.2</a>
<b>RefSeq Size:</b>	1851 bp
<b>RefSeq ORF:</b>	777 bp
<b>Locus ID:</b>	81790
<b>UniProt ID:</b>	<a href="#">Q96K19</a>
<b>Cytogenetics:</b>	8p11.21
<b>Domains:</b>	RING
<b>Protein Families:</b>	Druggable Genome, Transmembrane
<b>MW:</b>	29.6 kDa
<b>Gene Summary:</b>	This gene encodes a RING domain-containing protein that resides in the endoplasmic reticulum (ER) membrane. This protein functions as an E3 ubiquitin ligase and mediates ubiquitination and processing of inositol 1,4,5-trisphosphate (IP3) receptors via the ER-associated protein degradation pathway. It is recruited to the activated IP3 receptors by the ERLIN1/ERLIN2 complex to which it is constitutively bound. Mutations in this gene are associated with autosomal dominant sensory ataxia. Alternatively spliced transcript variants have been found for this gene. [provided by RefSeq, Jun 2012]

Product images:



Circular map for RC224168L3