

Product datasheet for **RC224167**

RGS3 (NM_017790) Human Tagged ORF Clone

Product data:

Product Type:	Expression Plasmids
Product Name:	RGS3 (NM_017790) Human Tagged ORF Clone
Tag:	Myc-DDK
Symbol:	RGS3
Synonyms:	C2PA; RGP3
Mammalian Cell Selection:	Neomycin
Vector:	pCMV6-Entry (PS100001)
E. coli Selection:	Kanamycin (25 ug/mL)



[View online »](#)

ORF Nucleotide Sequence:

>RC224167 representing NM_017790
 Red=Cloning site Blue=ORF Green=Tags(s)

TTTTGTAATACGACTCACTATAGGGCGGCCGGAATTCGTCGACTGGATCCGGTACCGAGGAGATCTGCC
 GCC**CGCATCGCC**

ATGGAGCGCTCCCTGCACCCGCTCTCCCTCGGGAGCCGGCGTGCCACCCGGACTTGTCTTCTACCTCA
 CCACCTTTGGTCAGCTGAGGCTGTCATTGATGCCAGGACCGGTTCTGCTGCTTACATTATAGAAGG
 TAAAGGCCTGATCAGCAAACAGCCTGGCACCTGTGATCCGATGTGAAGATTTCTTTGATCCCTGAAGT
 AGTAGACTACGCCACCAGAAGACGCAGACCGTTCCAGACTGCAGAGACCCGGCTTCCACAGCACTTCT
 TCTTTCTGTCCAAGAGGAGGATGATCAGAAGCGTCTCTTGGTTACTGTGTGGAACAGGGCCAGCCAGTC
 CAGACAGAGTGGACTCATTGGCTGCATGAGCTTTGGGGTGAAGTCTCTCCTGACTCCAGACAAGGAGATC
 AGTGGTTGGTACTACCTCCTAGGGGAGCACCTGGGCCGACCAAGCACTTGAAGGTGGCCAGGCGGCGAC
 TGGCGCCGCTGAGAGACCCGCTGCTGAGAATGCCAGGAGGTGGGACACTGAGAATGGGAAGAACTAAA
 GATCACCATCCCAGGGGAAAGGACGGCTTTGGCTTACCATCTGCTGCGACTCTCCAGTTCGAGTCCAG
 GCCGTGGATTCCGGGGTCCGGCGGAACGGGCAGGGCTGCAGCAGCTGGACACGGTCTGCAGCTGAATG
 AGAGGCCTGTGGAGCACTGGAAATGTGTGGAGCTGGCCACGAGATCCGGAGCTGCCCCAGTGAGATCAT
 CCTACTCGTGTGGCGCATGGTCCCCAGGTCAAGCCAGGACCAGATGGCGGGTCTGCGCGGGCTCC
 TGCAAGTCGACACATGACCTCCAGTCAACCCCAACAACGGGAGAAGAACTGCACCCATGGGGTCCAGG
 CACGGCTGAGCAGCGCCACAGCTGCCACCTGGTATGTGACAGCTCTGATGGGCTGCTGCTCGGCGGCTG
 GGAGCGCTACCCGAGGTGGCAAGCGCGGGGGCCAGCACACCTGCCTGCACTGCCGTGCCACTGCC
 CCCACCGACCCCAACTACATCATCTGGCCCGCTGAATCCTGGGAGCCAGCTGCTCCGGCTGTGTACC
 AGGAGGATACCATCCCCGAAGAATCAGGGAGTCCAGTAAAGGGAACTCTACACAGCCCTGGGGAAGAA
 GTCCCGCTGATGAAGACAGTGCAGACCATGAAGGGCCACGGGAACACAAAACGCCCCGTTGTGAGG
 CCGCATGCCACGCACTCAAGCTATGGCACCTACGTACCCTGGCCCCAAAGTCTGGTGTTCCTGTCT
 TTGTTACGCTCTAGATCTCTGTAATCCTGCCCGACCCTCTGCTGTCAGAGGAGCTGCTGCTGTATGA
 AGGGAGGAACAAGGCTGCCGAGGTGACACTGTTTGCTATTTCGGACTGCTGCTTCCACCAAGGAGGAC
 GAGCCTGGCCGCTGCGACGCTCTGAGGAACCCCTCTACCTCCAGAGTGTGAAGTGCAGGAAGTTCTT
 CAGAAGACCTGAAATTCTGCGTCTCTATCTAGCAGAGAAGGCAGAGTGTATTCACTTTGGAAGCGCA
 CTCGACAGGAGCAGAAGAAGAGAGTGTGCTGGTGCCTGTCGGAGAACATCGCCAAGCAGCAACAGCTGGCA
 GCATACCCCCGGACAGCAAGAACTCCACCCTTTCGGCTCTCTCCAGCAGGAGATGGGGCCGGTCAACT
 CAACCAATGCCACCCAGGATAGAAGCTTACCTACCAGGACAGACTCTGATTGGC

ACGCGTACGCGGCCGCTCGAGCAGAACTCATCTCAGAAGAGGATCTGGCAGCAAATGATATCCTGGATT
 ACAAGGATGACGACGATAAGGTTTAA

Protein Sequence:

>RC224167 representing NM_017790
 Red=Cloning site Green=Tags(s)

MERSLHRVSLGSRRAHPDL SFYL TTFGQLRLSIDAQDRVLLLHIIEGKGLISKQPGTCDPYVKISLIPED
 SRLRHQKTQTPDCRDP AFHEHFFFPVQEEDQKRLLVTVWNRASQSRQSLIGCMSFGVKSLLTPDKEI
 SGWYLLGEHLGRTHLKVARRRLRPLRDPLLRMPGGGDTENGGKLIKITIPRGKDFGFTICDSDPVRVQ
 AVDSGGPAERAGLQQLDTVLQLNERPVEHWKVELAHEIRSCPSEIILLVWRMVPQVKPGPDGGVLRAS
 CKSTHDLQSPPNKREKNCTHGVARPEQRHSCHLVCDSSDGLLLGGWERYTEVAKRGGQHTLPALSRATA
 PTDPNYIILAPLNPGSQLLRPVYQEDTIPEESGSPSKGKSYTGLGKKSRLMKTVMKQTMKGHNYQNCPPVR
 PHATHSSYGTIVTLAPKLVFPVFPVQPLDLCNPARTLLLSEELLYEGRNKA AEVTLFAYSDDLFLFKED
 EPGRCDVLRNPLYLQSVKLQEGSSEDLKFCVLYLAEKAELFTLEAHSQEQQKRVWCLESENIAKQQQLA
 ASPPDSKKLHPFGLQQEMGPVNSTNATQDRSFTSPGQTLIG

TRTRPLEQKLISEEDLAANDILDYKDDDDKV

Chromatograms:

https://cdn.origene.com/chromatograms/mk8069_c05.zip

Restriction Sites: SgfI-MluI

Cloning Scheme:



ACCN: NM_017790

ORF Size: 1806 bp

OTI Disclaimer: The molecular sequence of this clone aligns with the gene accession number as a point of reference only. However, individual transcript sequences of the same gene can differ through naturally occurring variations (e.g. polymorphisms), each with its own valid existence. This clone is substantially in agreement with the reference, but a complete review of all prevailing variants is recommended prior to use. [More info](#)

OTI Annotation: This clone was engineered to express the complete ORF with an expression tag. Expression varies depending on the nature of the gene.

Components: The ORF clone is ion-exchange column purified and shipped in a 2D barcoded Matrix tube containing 10ug of transfection-ready, dried plasmid DNA (reconstitute with 100 ul of water).

- Reconstitution Method:
1. Centrifuge at 5,000xg for 5min.
 2. Carefully open the tube and add 100ul of sterile water to dissolve the DNA.
 3. Close the tube and incubate for 10 minutes at room temperature.
 4. Briefly vortex the tube and then do a quick spin (less than 5000xg) to concentrate the liquid at the bottom.
 5. Store the suspended plasmid at -20°C. The DNA is stable for at least one year from date of shipping when stored at -20°C.

RefSeq: [NM_017790.4](#), [NP_060260.3](#)

RefSeq Size: 2564 bp

RefSeq ORF: 1809 bp

Locus ID: 5998

UniProt ID: [P49796](#)

Cytogenetics: 9q32

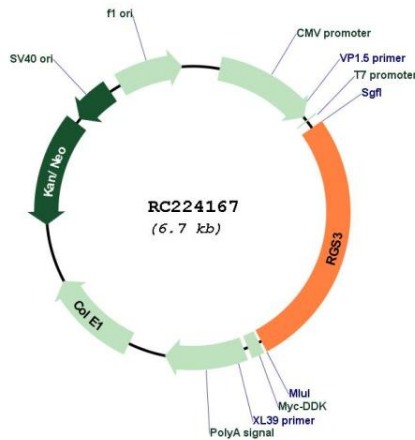
Protein Families: Druggable Genome

Protein Pathways: Axon guidance

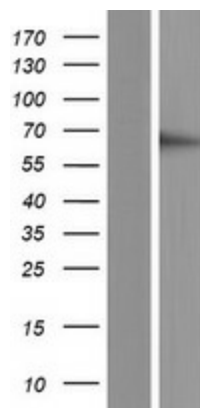
MW: 67.1 kDa

Gene Summary: This gene encodes a member of the regulator of G-protein signaling (RGS) family. This protein is a GTPase-activating protein that inhibits G-protein-mediated signal transduction. Alternative splicing and the use of alternative promoters results in multiple transcript variants encoding different isoforms. Long isoforms are largely cytosolic and plasma membrane-associated with a function in Wnt signaling and in the epithelial mesenchymal transition, while shorter N-terminally-truncated isoforms can be nuclear. [provided by RefSeq, Jan 2013]

Product images:



Circular map for RC224167



Western blot validation of overexpression lysate (Cat# [LY413532]) using anti-DDK antibody (Cat# [TA50011-100]). Left: Cell lysates from untransfected HEK293T cells; Right: Cell lysates from HEK293T cells transfected with RC224167 using transfection reagent MegaTran 2.0 (Cat# [TT210002]).