

Product datasheet for **RC224163**

Meprin alpha (MEP1A) (NM_005588) Human Tagged ORF Clone

Product data:

Product Type:	Expression Plasmids
Product Name:	Meprin alpha (MEP1A) (NM_005588) Human Tagged ORF Clone
Tag:	Myc-DDK
Symbol:	Meprin alpha
Synonyms:	PPHA
Mammalian Cell Selection:	Neomycin
Vector:	pCMV6-Entry (PS100001)
E. coli Selection:	Kanamycin (25 ug/mL)



[View online »](#)

ORF Nucleotide Sequence:

>RC224163 representing NM_005588
 Red=Cloning site Blue=ORF Green=Tags(s)

TTTTGTAATACGACTCACTATAGGGCGGCCGGGAATTCGTCGACTGGATCCGGTACCGAGGAGATCTGCC
 GCC**CGGATCGCC**

ATGGCTTGGATTAGATCCACTTGCATTCTTTTTTACCTTGCTTTTTGCCACATAGCAGCTGTACCGA
 TTAAGTATCTTCCTGAAGAAAATGTACATGATGCAGATTTTGGTGAACAGAAGGATATTTTCAGAAATCAA
 TTTAGCTGCAGGCTTGGACCTCTTTCAAGGGGACATCCTCTTGCAGAAATCCAGAAATGGCCTGAGAGAC
 CCAAACACCAGGTGGACGTTCCCCATTCTTACATCTTGGCTGATAATTTGGGGCTGAATGCTAAAGGAG
 CCATTCTGTATGCCTTTGAGATGTTCCGTCTCAAGTCTGTGTGGATTTCAAGCCCTATGAAGGAGAGAG
 CTCATATATCATATTTCAACAGTTTGTGGGTGCTGGTCTGAGGTTGGTGACCAACATGTGGGACAGAAC
 ATTTCCATTGGCCAAGGATGTGCCTATAAGGCCATCATAGAACACGAGATCCTGCATGCTTTGGGATTTT
 ACCACGAGCAGTCAAGGACGGACCGGGATGATTATGTGAACATCTGGTGGGACCAAAATCTTTTCAGTTA
 CCAGCACAACTTTGACACCTATGATGATAGCTTAATCACAGACCTCAATACACCCTATGATTATGAGTCT
 TTGATGCACTACCAAGCTTTCTCATTAAACAAGATGCAAGTGTCCACCATCAGACCAAGATCCCTG
 AGTTTAACTCCATTATCGGACAGCGCCTGGATTTCACTGCGCATTGATTTAGAGAGGCTGAACCGAATGTA
 CAATTGCACCACAACCTCACACTCTTTGGACCACTGACTTTTGGAAAGGCAAACATCTGTGGAATGATT
 CAGGGCACAGAGATGACTGACTGGGCCATCAGGACAGTGTCTCAGGCTGGAGAAGTGGATCACACCT
 TGTGGGACAATGCACAGGTGCCGGCTACTTATGCAGTTCAGCACAGCTCGGGGTCCGGGAAGAGGC
 AGCCCTACTGGAGTCTCGGATCTTTACCAAAGAGGAAGCAGCAGTGCCTGCAATTTTCTATAAAATG
 ACGGGAAGTCTTCAGACAGACTCGTTGTCTGGGTGAGGAGGATGACAGCACAGGCAATGTTTCGCAAGT
 TGGTGAAGGTGCAGACTTTTCAAGGAGATGATGACCACAATTGGAAAATGGCCATGTGGTCTCAAAGA
 GGAACAGAAGTTTCGCTACCTTTTCCAGGGCACAAAAGGCGACCCTCAGAACTCAACTGGGGGAATTTAC
 CTAGATGACATCACTCTGACAGAAACCCCTGCCCCACAGGGGTCTGGACAGTCCGGAATTTCTCCCAAG
 TCCTTGAGAACACCAGCAAAGGGGACAAGCTTCAGAGCCCTCGATTCTACAATTCGGAGGGATATGGTTT
 TGGGGTAACTTTATACCAAATAGCAGAGAAAGCTCTGGTTACTTGAGACTTGCTTTTTCATGTGTGCAGT
 GGGGAGAACGATGCTATCCTGGAGTGGCCGGTAGAAAACAGACAGGTGATAATTACCATCCTTGACCAGG
 AGCCTGATGTCCGGAACAGGATGCTCTCAAGCATGGTGTCTACTACCTCGAAGTCGCACACATCTCCAGC
 GATAAATGACTGTCTCTGGACAGGCCGTCCAGGTGGGAACCTATCATACGGACTGTAATTGTTTT
 AGAAGCATCGACTTGGGCTGGAGTGGTTTCATTTCCACCAAATGCTGAAAAGGAGGAGTTTCTGAAAA
 ATGATGACCTCATCATATTTGTGGACTTTGAAGATATCACCCACCTCAGCCAGACTGAAGTTCCCACTAA
 AGGCAAAAGACTGAGCCCCAAGGCCTATTCTCCAAGGCCAGGAGCAGCAGGTCTCCGAAGAAGTTTCG
 GGAAAGGCCATGTTAGAGGAAGCCCTACCTGTGAGCCTGAGCCAGGGGCAGCCAGCCGACAGAAGCGGT
 CGGTGGAGAACACAGGCCCTGGAGGACCATAACTGGCCACAGTACTTCAGAGACCCATGTGACCCAAA
 CCCTTGCCAAAATGACGGCATCTGTGTGAACGTGAAGGGGATGGCGAGCTGCAGGTGCATCTCTGGACAT
 GCTTTCTTCTACACGGGGAGCGCTGTGAGGCCGTGACAGTGCACGGCAGTGTCTGGGCATGGTGTATCG
 GAGGCACGGCTGGCGTATCTTCTGACCTTCTCCATCATCGCCATCCTTTCCAAAGGCCAAGGAAG

ACGCGTACGCGGCCGCTCGAGCAGAACTCATCTCAGAAGAGGATCTGGCAGCAAATGATATCCTGGATT
 ACAAGGATGACGACGATAAGGTTTAA

Protein Sequence: >RC224163 representing NM_005588
Red=Cloning site Green=Tags(s)

MAWIRSTCILFFTLFAHIAAVPIKYLPEENVHDAFGEQKDISEINLAAGLDLFGQDILLQKSRNGLRD
 PNTRWTFPIPYILADNLGLNAKGAILYAFEMFRLKSCVDFKPYEGESSYIIFQQFDGCWSEVGDQHVGN
 ISIGQGCAKAIIEHEILHALGFYHEQSRTDRDDYVNIWWDQILSGYQHNFDYDSSLITDLNTPYDYES
 LMHYQPF SFNKNASVPTITAKIPEFN SIIIGQLDFSAIDLERLNRMYNCTTTHTLLDHCTFEKANICGMI
 QGTRDDTDWAHQDSAQAGEVDHTLLGQCTGAGYFMQFSTSSGSAEEAALLESRIILYPKRKQQCLQFFYKM
 TGSPSRLV VVWVRRDDSTGNVRKLVKVQTFQGDDHNWKIAHVVLKEEQKFRYLFQGTGDPQNSTGGIY
 LDDITLTETPCPTGVWTVRNF SQVLENTSKGDKLQSPRYNSEGYGFGVTLYPNSRESSGYLRLAFHVCS
 GENDAILEWPVENRQVIIITILDQEPDVRNRMSSSMVFTTSKSHSPAINDTVIWRPSRVGTYHTDCNCF
 RSIDLGWSGFISHQMLKRRSFLKNDL IIFVDFEDITHLSQTEVPTKGKRLSPQGLILQGGEQQVSEEGS
 GKAMLEALPVSLSQGQPSRQKRSVENTGPLEDHNWPQYFRDPCDPNPCQNDGICVNVKGMASCRCISGH
 AFFYTGERCQAVQVHGSVLGMVIGGTAGVIFLTF SIIAILSQRP RK

TRTRPLEQKLISEEDLAANDILDYKDDDDKV

Chromatograms: https://cdn.origene.com/chromatograms/mk8116_h04.zip

Restriction Sites: SgfI-MluI

Cloning Scheme:

Cloning sites used for ORF Shuttling:



* The last codon before the Stop codon of the ORF

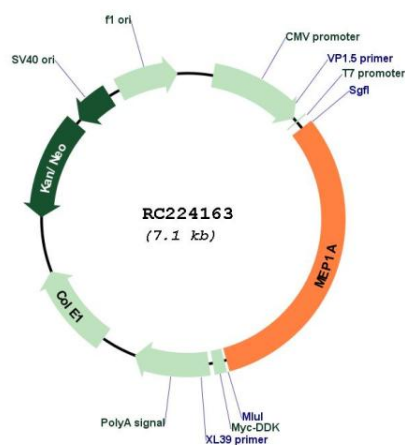
ACCN: NM_005588

ORF Size: 2238 bp

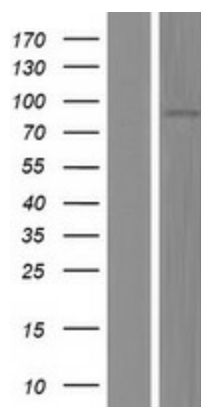
OTI Disclaimer: The molecular sequence of this clone aligns with the gene accession number as a point of reference only. However, individual transcript sequences of the same gene can differ through naturally occurring variations (e.g. polymorphisms), each with its own valid existence. This clone is substantially in agreement with the reference, but a complete review of all prevailing variants is recommended prior to use. [More info](#)

OTI Annotation: This clone was engineered to express the complete ORF with an expression tag. Expression varies depending on the nature of the gene.

Components:	The ORF clone is ion-exchange column purified and shipped in a 2D barcoded Matrix tube containing 10ug of transfection-ready, dried plasmid DNA (reconstitute with 100 ul of water).
Reconstitution Method:	<ol style="list-style-type: none">1. Centrifuge at 5,000xg for 5min.2. Carefully open the tube and add 100ul of sterile water to dissolve the DNA.3. Close the tube and incubate for 10 minutes at room temperature.4. Briefly vortex the tube and then do a quick spin (less than 5000xg) to concentrate the liquid at the bottom.5. Store the suspended plasmid at -20°C. The DNA is stable for at least one year from date of shipping when stored at -20°C.
RefSeq:	NM_005588.3
RefSeq Size:	2947 bp
RefSeq ORF:	2241 bp
Locus ID:	4224
UniProt ID:	Q16819
Cytogenetics:	6p12.3
Protein Families:	Druggable Genome, Protease, Transmembrane
MW:	84.4 kDa

Product images:

Circular map for RC224163



Western blot validation of overexpression lysate (Cat# [LY417205]) using anti-DDK antibody (Cat# [TA50011-100]). Left: Cell lysates from untransfected HEK293T cells; Right: Cell lysates from HEK293T cells transfected with RC224163 using transfection reagent MegaTran 2.0 (Cat# [TT210002]).