

Product datasheet for **RC224162**

CADM3 (NM_021189) Human Tagged ORF Clone

Product data:

Product Type:	Expression Plasmids
Product Name:	CADM3 (NM_021189) Human Tagged ORF Clone
Tag:	Myc-DDK
Symbol:	CADM3
Synonyms:	BigR; IGSF4B; Necl-1; NECL1; synCAM3; TSLL1
Mammalian Cell Selection:	Neomycin
Vector:	pCMV6-Entry (PS100001)
E. coli Selection:	Kanamycin (25 ug/mL)



[View online »](#)

ORF Nucleotide Sequence:

>RC224162 representing NM_021189
 Red=Cloning site Blue=ORF Green=Tags(s)

TTTTGTAATACGACTCACTATAGGGCGGCCGGGAATTCGTCGACTGGATCCGGTACCGAGGAGATCTGCC
 GCC**CGGATCGCC**

ATGGGGGGCCCCAGCCGCCTCGTCTCTGCTCTGCTCTGCTGTTGCGCTGCTGCTGGGCGCCCGGCGGGG
 CCAACCTCTCCCAGGACGGCTACTGGCAGGAGCAGGATTTGGAGCTGGGAACCTGGCTCCACTCGACGA
 GGCCATCAGCTCCACAGTCTGGAGCAGCCCTGACATGCTGGCCAGTCAAGACAGCCAGCCCTGGACATCT
 GATGAAACAGTGGTGGCTGGTGGCACCGTGGTGTCAAGTGCCAAGTCAAAGATCACGAGGACTCATCCC
 TGCAATGGTCTAACCTGCTCAGCAGACTCTCTACTTTGGGGAGAAGAGAGCCCTTCGAGATAATCGAAT
 TCAGCTGGTTACCTCTACGCCCCAGAGCTCAGCATCAGCATCAGCAATGTGGCCCTGGCAGACGAGGGC
 GAGTACACCTGCTCAATCTTCACTATGCCTGTGCGAACTGCCAAGTCCCTCGTACTGTGCTAGGAATTC
 CACAGAAGCCCATCATCTGTTATAAATCTTACATTACGGGAAAAGACACAGCCACCCTAAACTGTCA
 GTCTTCTGGGAGCAAGCCTGCAGCCCGGCTCACCTGGAGAAAGGGTGACCAAGAACTCCACGGAGAACCA
 ACCCGCATACAGGAAGATCCCAATGGTAAAACCTTCACTGTGAGCAGCTCGGTGACATTCAGGTTACCC
 GGGAGGATGATGGGGCGAGCATCGTGTGCTCTGTGAACCATGAATCTCTAAAGGGAGCTGACAGATCCAC
 CTCTCAACGCATTGAAGTTTTATACACACCAACTGCGATGATTAGGCCAGACCCTCCCCATCCTCGTGAG
 GGCCAGAAGCTGTTGCTACACTGTGAGGGTGCAGGCAATCCAGTCCCCAGCAGTACCTATGGGAGAAGG
 AGGGCAGTGTGCCACCCCTGAAGATGACCCAGGAGAGTGCCTGATCTTCCCTTCTCAACAAGAGTGA
 CAGTGGCACCTACGGTGCACAGCCACCAGCAACATGGGCAGTACAAGGCCTACTACACCCTCAATGTT
 AATGACCCAGTCCGGTGCCTCCTCCTCCAGCACCTACCACGCCATCATCGGTGGGATCGTGGCTTTCA
 TTGTCTTCTGCTGCTCATCATGCTCATCTTCTCGGCCACTACTTGATCCGGCACAAAGGAACCTACCT
 GACACATGAGGCAAAAGGCTCCGACGATGCTCCAGACGGGACACGGCCATCATCAATGCAGAAGCGGG
 CAGTCAGGAGGGGACGACAAGAAGGAATATTTTCATC

ACGCGTACGCGGCCGCTCGAGCAGAAACTCATCTCAGAAGAGGATCTGGCAGCAATGATATCCTGGATT
 ACAAGGATGACGACGATAAGGTTTAA

Protein Sequence:

>RC224162 representing NM_021189
 Red=Cloning site Green=Tags(s)

MGAPAASLLLLLLLLFACCWAPGGANLSQDGYWQEQDLELGLTAPLDEAISSTVWSSPDLASQDSQPWTS
 DETVVAGGTVVLKQVKDHEDSSLQWSNPAQQTLYFGEKRALRDNRIQLVTSTPHELSISISNVALADEG
 EYTCSIFTMPVRTAKSLVTVLGIPIQKPIITGYKSSLREKDTATLNCQSSGSKPAARLTWRKGDQELHGEP
 TRIQEDPNGKTFVSSSVTFQVTREDDGASIVCSVNHESLKGADRSTSQRIEVLYTPTAMIRPDPHPRE
 GQKLLLLHCEGRGNPVPQQYLWEKEGSPPLKMTQESALIFPFLNKSDSGTYGCTATSNMGYSYKAYYTLNV
 NDPSPVSSSSTYHAIIGGIVAFIVFLLLIIMLIFLGHYLRHKGTYLTHEAKGSDDAPDADTAIINAEGG
 QSGGDDKKEYFI

TRTRPLEQKLISEEDLAANDILDYKDDDDKV

Chromatograms:

https://cdn.origene.com/chromatograms/mk8010_f03.zip

Restriction Sites:

SgfI-MluI

Cloning Scheme:


ACCN: NM_021189

ORF Size: 1296 bp

OTI Disclaimer: Due to the inherent nature of this plasmid, standard methods to replicate additional amounts of DNA in E. coli are highly likely to result in mutations and/or rearrangements. Therefore, OriGene does not guarantee the capability to replicate this plasmid DNA. Additional amounts of DNA can be purchased from OriGene with batch-specific, full-sequence verification at a reduced cost. Please contact our customer care team at custsupport@origene.com or by calling 301.340.3188 option 3 for pricing and delivery.

The molecular sequence of this clone aligns with the gene accession number as a point of reference only. However, individual transcript sequences of the same gene can differ through naturally occurring variations (e.g. polymorphisms), each with its own valid existence. This clone is substantially in agreement with the reference, but a complete review of all prevailing variants is recommended prior to use. [More info](#)

OTI Annotation: This clone was engineered to express the complete ORF with an expression tag. Expression varies depending on the nature of the gene.

Components: The ORF clone is ion-exchange column purified and shipped in a 2D barcoded Matrix tube containing 10ug of transfection-ready, dried plasmid DNA (reconstitute with 100 ul of water).

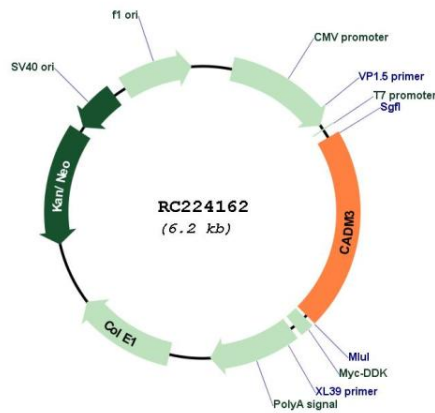
- Reconstitution Method:**
1. Centrifuge at 5,000xg for 5min.
 2. Carefully open the tube and add 100ul of sterile water to dissolve the DNA.
 3. Close the tube and incubate for 10 minutes at room temperature.
 4. Briefly vortex the tube and then do a quick spin (less than 5000xg) to concentrate the liquid at the bottom.
 5. Store the suspended plasmid at -20°C. The DNA is stable for at least one year from date of shipping when stored at -20°C.

RefSeq: [NM_021189.2](#), [NP_067012.1](#)

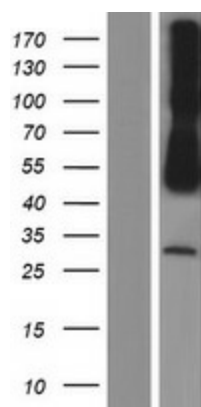
RefSeq Size: 2540 bp
RefSeq ORF: 1299 bp
Locus ID: 57863
UniProt ID: [Q8N126](#)
Cytogenetics: 1q23.2
Domains: ig, IGc2, IG
Protein Families: Transmembrane
Protein Pathways: Cell adhesion molecules (CAMs)
MW: 46.8 kDa

Gene Summary: The protein encoded by this gene is a calcium-independent cell-cell adhesion protein that can form homodimers or heterodimers with other nectin proteins. The encoded protein has both homophilic and heterophilic cell-cell adhesion activity. This gene is reported to be a tumor suppressor gene. [provided by RefSeq, Oct 2016]

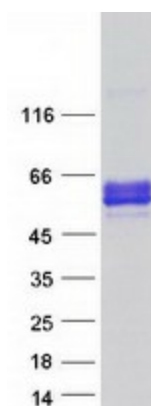
Product images:



Circular map for RC224162



Western blot validation of overexpression lysate (Cat# [LY412028]) using anti-DDK antibody (Cat# [TA50011-100]). Left: Cell lysates from untransfected HEK293T cells; Right: Cell lysates from HEK293T cells transfected with RC224162 using transfection reagent MegaTran 2.0 (Cat# [TT210002]).



Coomassie blue staining of purified CADM3 protein (Cat# [TP324162]). The protein was produced from HEK293T cells transfected with CADM3 cDNA clone (Cat# RC224162) using MegaTran 2.0 (Cat# [TT210002]).