

Product datasheet for **RC224152**

SUOX (NM_001032387) Human Tagged ORF Clone

Product data:

Product Type:	Expression Plasmids
Product Name:	SUOX (NM_001032387) Human Tagged ORF Clone
Tag:	Myc-DDK
Symbol:	SUOX
Mammalian Cell Selection:	Neomycin
Vector:	pCMV6-Entry (PS100001)
E. coli Selection:	Kanamycin (25 ug/mL)



[View online »](#)

ORF Nucleotide Sequence:

>RC224152 ORF sequence
 Red=Cloning site Blue=ORF Green=Tags(s)

TTTTGTAATACGACTCACTATAGGGCGGCCGGGAATTCGTCGACTGGATCCGGTACCGAGGAGATCTGCC
 GCC**CGGATCGCC**

ATGCTGCTGCTGCACAGAGCTGTGGTCTCAGGCTCCAACAGGCCTGCAGACTCAAGTCAATCCCCTCAA
 GGATCTGCATTACAGCCCTGCTCCACAAATGATTATTTACGCCCCAGCGCCCAGCCTCACCTTCTCTGG
 TGATAACTCCAGCACCCAGGGATGGAGAGTCTATGGGGACCCTATTAGGTCTCGGTGCAGTGTGGCCTAT
 CAGGACCATCGGTGTAGGGCTGCTCAGGAGTCAACACACATATACACTAAGGAGGAAGTGAAGTCCACACA
 CCAGCCCTGAGACTGGGATCTGGGTGACTCTGGGCTCTGAGGTCTTTGATGTACAGAATTTGTGGACCT
 ACATCCAGGGGGCCCTTCAAAGCTGATGCTAGCAGCTGGGGTCCCCTAGAGCCCTTCTGGGCCCTCTAT
 GCTGTTCAACACAGTCCCATGTGCGTGAGTTACTGGCTCAGTACAAGATTGGGGAGCTGAATCCTGAAG
 ACAAGGTAGCCCCACCGTGGAGACCTCTGACCCTTATGCTGATGATCCTGTACGTCACCCAGCCCTGAA
 GGTCAACAGCCAGCGGCCCTTTAATGCAGAGCCTCCCCCTGAGCTGCTGACAGAAAACATACACACCC
 AACCTATCTTCTTACCCGGAACCATCTGCCTGTACCTAACCTGGATCCAGACACCTATCGCTTACACG
 TAGTAGGAGCACCTGGGGTCACTGCTCTCTTCCCTGGATGACTTGCAACAATTTCCAGGTACGA
 GATCACAGTCACTCTGCAGTGTGCCGGCAACCGACGCTCTGAGATGACTCAGGTCAAAGAAGTAAAGGT
 CTGGAGTGGAGAACAGGAGCCATCAGCACTGCACGCTGGGCTGGGGCACGGCTCTGTGATGTGTAGCCC
 AGGCTGGCCACCAACTCTGTGAACTGAGGCCCACGTCTGCTTTGAGGGACTGGAAGTCTGAGCCTACTGG
 GACTGCCTATGGAGCATCCATCCCTCTGGCTCGGGCCATGGACCTGAAGCTGAGGTCTGCTGGCATAT
 GAGATGAATGGGAGCCTCTGCCACGTGACCACGGCTTCCCTGTGCGTGTGGTGGTTCTGGAGTGGTGG
 GTGCCCCCATGTCAAATGGCTGGGAGAGTGAAGTGTGAGCCAGAGGAAAGTTACAGCCACTGGCAACG
 GCGGATTACAAAGGCTTCTCTCCATCTGTGGACTGGGAGACTGTAGATTTTACTCTGCTCCATCCATT
 CAGGAATTCCTGTCCAGTCCGCCATCACAGAGCCCCGGGATGGAGAGACTGTAGAATCAGGGGAGGTGA
 CCATCAAGGGCTATGCATGGAGTGGTGGTGGCAGGGCTGTGATCCGGGTGGATGTGTCTCTGGATGGGG
 CCTAACCTGGCAGGTGGCTAAGCTGGATGGAGAGGAACAGCGCCCCAGGAAGGCCTGGGCATGGCGTCTG
 TGGCAGTTGAAAGCCCTGTGCCAGCTGGACAAAAGGAAGTGAACATTGTTTGAAGGCTGTGGATGATG
 GTTACAATGTGCAGCCAGACACCGTGGCCCCAATCTGGAACCTGCGAGGTGTTCTCAGCAATGCCTGGCA
 TCGTGTCCATGTCTATGTCTCCCA

ACGCGTACGCGGCCGCTCGAGCAGAAACTCATCTCAGAAGAGGATCTGGCAGCAAATGATATCCTGGATT
 ACAAGGATGACGACGATAAGGTTTAA

Protein Sequence:

>RC224152 protein sequence
 Red=Cloning site Green=Tags(s)

MLLLHRAVVLRLQQACRLKSIPSRICIQACSTNDSFQPQRPSLTFSGDNSSTQGWRVMGTLGLGAVLAY
 QDHRCAAQESTHIYTKKEEVSSHTSPETGIWVTLGSEVFDVTEFVDLHPGGPSKLMMLAAGGPLEPFWALY
 AVHNQSHVRELLAQYKIGELNPEDKVAPTIVETSDPYADDPVRHPALKVNSQRPFNAPPEPELLTENYITP
 NPIFFTRNHLVPVNLDPDTRHLHVVGAPGGQSLSLDLDLHNFPRYEITVTLQCAGNRRESEMTEQVKEVKG
 LEWRTGAISTARWAGARLCDVLAQAGHQLCETEAHVCFEGLSDPTGTAYGASIPARAMDPEAEVLLAY
 EMNGQPLPRDHGFPVRVVPVGVGARHVKWLGRVSVQPEESYSHWQRRDYKGFSPSVDWETVDFDSAPSI
 QELPVQSAITEPRDGETVESGEVTIKGYAWSGGRAVIRVDVSLDGGLTWQVAKLDGEEQRPKAWAWRL
 WQLKAPVPAGQKELNIVCKAVDDGYNVQPDVAPIWNLRGVLNNAWHRVHVYVSP

TRTRPLE**QKL**ISEEDLAANDILDYKDDDDKV

Chromatograms:

https://cdn.origene.com/chromatograms/mk6355_f05.zip

Restriction Sites:

SgfI-MluI

Cloning Scheme:


ACCN: NM_001032387

ORF Size: 1635 bp

OTI Disclaimer: The molecular sequence of this clone aligns with the gene accession number as a point of reference only. However, individual transcript sequences of the same gene can differ through naturally occurring variations (e.g. polymorphisms), each with its own valid existence. This clone is substantially in agreement with the reference, but a complete review of all prevailing variants is recommended prior to use. [More info](#)

OTI Annotation: This clone was engineered to express the complete ORF with an expression tag. Expression varies depending on the nature of the gene.

Components: The ORF clone is ion-exchange column purified and shipped in a 2D barcoded Matrix tube containing 10ug of transfection-ready, dried plasmid DNA (reconstitute with 100 ul of water).

Reconstitution Method:

1. Centrifuge at 5,000xg for 5min.
2. Carefully open the tube and add 100ul of sterile water to dissolve the DNA.
3. Close the tube and incubate for 10 minutes at room temperature.
4. Briefly vortex the tube and then do a quick spin (less than 5000xg) to concentrate the liquid at the bottom.
5. Store the suspended plasmid at -20°C. The DNA is stable for at least one year from date of shipping when stored at -20°C.

RefSeq: [NM_001032387.1](#), [NP_001027559.1](#)

RefSeq Size: 2329 bp

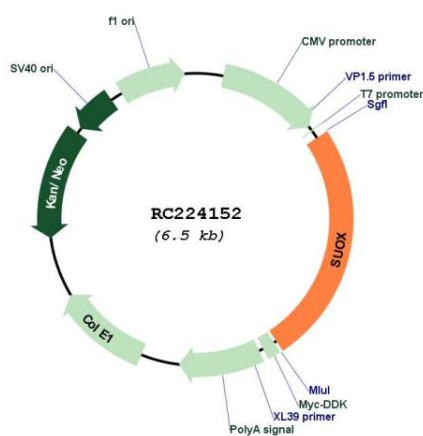
RefSeq ORF: 1638 bp

Locus ID: 6821

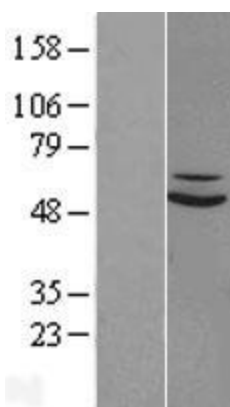
UniProt ID: [P51687](#)

Cytogenetics:	12q13.2
Protein Families:	Druggable Genome
Protein Pathways:	Sulfur metabolism
MW:	60.3 kDa
Gene Summary:	Sulfite oxidase is a homodimeric protein localized to the intermembrane space of mitochondria. Each subunit contains a heme domain and a molybdopterin-binding domain. The enzyme catalyzes the oxidation of sulfite to sulfate, the final reaction in the oxidative degradation of the sulfur amino acids cysteine and methionine. Sulfite oxidase deficiency results in neurological abnormalities which are often fatal at an early age. Alternative splicing results in multiple transcript variants encoding identical proteins. [provided by RefSeq, Jul 2008]

Product images:



Circular map for RC224152



Western blot validation of overexpression lysate (Cat# [LY422322]) using anti-DDK antibody (Cat# [TA50011-100]). Left: Cell lysates from untransfected HEK293T cells; Right: Cell lysates from HEK293T cells transfected with RC224152 using transfection reagent MegaTran 2.0 (Cat# [TT210002]).