

Product datasheet for **RC224146**

PWWP domain containing protein 2B (PWWP2B) (NM_001098637) Human Tagged ORF Clone

Product data:

Product Type:	Expression Plasmids
Product Name:	PWWP domain containing protein 2B (PWWP2B) (NM_001098637) Human Tagged ORF Clone
Tag:	Myc-DDK
Symbol:	PWWP domain containing protein 2B
Synonyms:	bA432J24.1; pp8607; PWWP2
Mammalian Cell Selection:	Neomycin
Vector:	pCMV6-Entry (PS100001)
E. coli Selection:	Kanamycin (25 ug/mL)



[View online »](#)

ORF Nucleotide Sequence:

>RC224146 representing NM_001098637
 Red=Cloning site Blue=ORF Green=Tags(s)

TTTTGTAATACGACTCACTATAGGGCGGCCGGAATTCGTCGACTGGATCCGGTACCGAGGAGATCTGCC
 GCC**GCGATCGCC**

ATGGAGCCGCGCGCCGGCTGCCGGTCCGGTGC GGTTGGAGCAGTTCGCAACGCGCGCTGGTGGTCA
 CGGTGAGCTGCGCGAGCGGAGCTTCGCGGGGATCCTGCTGGACTGCACGAAAAAGTCCGGCCTCTTTGG
 CCTACCCCGTTGGCTCCGCTGCCCCAGGTCGATGAGTCCCTGTCAACGACAGCCATGGCCGGGCTCCC
 GAGGAGGGGGATGCAGAGGTGATGCAGTGGGGTCCAGCTCCCCCCTCTGCCCGGGGTTCCAGCCCC
 CCGAGACCACCCGCCGAGCCACCCCGCCCTCGTGCCGCGCTGCCCGCGGAAGCTGCCCCGTA
 CCCTCCCTACTTCGAAGGCGCCCTTCCCTCACCCGCTGTGGCTCCGGGACACGTACAAGTGTGGGTG
 CCCCAGCCGCGCCAGGACCATCAAGCGCACGGCGGGCTGTGTCCCGCAACCCGACCCGGGGCGCC
 TCATCCTCAGCACCATCCGCTCGGCGCCGCCAGGTGCTCTGTGAGAAGTGCAAGAGCACGCTGAGCCC
 CCCGGAGGCCAGCCCGACCCAGCCGCGCCAGGGCCGAGGAGGCTGGGCAGCGCCGGACAGG
 GAGCTCCGCAAGCCGGAGGAGCCGAGAACGGCGAGCCACGGCTGCGGCCACCCGAGGAGCAAGA
 GGGAGAGGCGCGAGGAGGACAGGGCCCCGGCAGAGCAGGTCCCGCGGAGCCCGGTATCAAGATCTCCTA
 CAGCACGCCCCAGGGCAAGGGAGAGGTGGTCAAGATCCCTCCCGCTGCACGGCTCTCTGGAGCCCTTC
 CGTCCCCAGCAGGCCCGCAGGACGACGGCAGCCAGGACCCCGAGGTGCTGGACAGAGAGTCCCGGGACC
 GGCCGTCTGCGCGCCCTCGGCCTCCATCCCAAGTTGAAACTGACACGGCTGTGCCGGCCGCGCGGA
 CCTGCCGCCCTAAGATCCGCCTGAAGCCCCACCGTCTGGGGACAGCAGCAGAGCCCGTGTACCGG
 GCCGAGCTGGTGGGGAGCTGAACGGTACCTGCGGGACAGCTCGCCGGCCCTGTGCGGACGGCCCTG
 CCGTGGGCTGGCGGACTTGTCTTCTGGAAGTTCCGGTGAGGACGATGACTTCAAGAGCTGCCAGGG
 TCCACAGGGACGCGAGGGCTTGGCTTTTCTCGTACGCTGCCCTGAGGGGAGAGCGGACTGTGCCAGTGAG
 TCGGCGTGCAGCAGCAGCAGCCTGGACGAGGCCAGATCGTCCGGCTCGGAAGGGACGCGCAGACACGG
 GTGACCTCTCGCTGGCCACGGCGCTCAGCGCCCTCGGTGTCCAGAGAGGCTCGCCAAACGGTGGCCGC
 CCTGACGGTCAGGCTGCACACAGAGCGTGTCCGAGTGCATCACGGAGGACGGCAGGACTGTGGCCGTG
 GGGGACATCGTCTGGGGTACCCACGA

ACGCGTACGCGGCCGCTCGAGCAGAACTCATCTCAGAAGAGGATCTGGCAGCAAATGATATCTGGATT
 ACAAGGATGACGACGATAAGGTTTAA

Protein Sequence:

>RC224146 representing NM_001098637
 Red=Cloning site Green=Tags(s)

MEPRAGCRLPVRVEQVVNGALVVTVSCGERSFAGILLDCTKKSGLFGLPPLAPLPQVDESPVNDSHGRAP
 EEGDAEVMQLGSSPPPARGVQPPETTRPEPPPPLVPPLPAGSLPPYPPYFEGAPFPHLWLRDITYKLWV
 PQPPPRTIKRTRRRLSRNRDPGRILSTIRLRPRQVLCCKSTLSPPEASGPPAAPRRRRRLGSGPDR
 ELRKPEEPENGEPTAAATARRSKRERREEDRAPAEQVPRSPVIKISYSTPQKGVEVVKIPSRVHGSLEPF
 RPQQAPQDDGSQDPEVLDRSRDRPSCAPSASIPKLLTRPVPAGADLPPKIRLKPRLGDSEHEPVYR
 AELVGELNGYLRDSSPAPCADGPAGGLADLSSGSSGEDDDFKSCPQGPQGREGLAFLVSCPEGRADCASE
 SACSSDSLDEARSSGSEGTPADTGDLSPGHGASAPSVSREARQTVPLTVRLHTQSVSECITEDGRTVAV
 GDIVWGHRR

TRTRPLEQKLISEEDLAANDILDYKDDDDKV

Chromatograms:

https://cdn.origene.com/chromatograms/mk8063_f05.zip

Restriction Sites:

Sgfl-Mlul

Cloning Scheme:



ACCN: NM_001098637

ORF Size: 1497 bp

OTI Disclaimer: The molecular sequence of this clone aligns with the gene accession number as a point of reference only. However, individual transcript sequences of the same gene can differ through naturally occurring variations (e.g. polymorphisms), each with its own valid existence. This clone is substantially in agreement with the reference, but a complete review of all prevailing variants is recommended prior to use. [More info](#)

OTI Annotation: This clone was engineered to express the complete ORF with an expression tag. Expression varies depending on the nature of the gene.

Components: The ORF clone is ion-exchange column purified and shipped in a 2D barcoded Matrix tube containing 10ug of transfection-ready, dried plasmid DNA (reconstitute with 100 ul of water).

- Reconstitution Method:**
1. Centrifuge at 5,000xg for 5min.
 2. Carefully open the tube and add 100ul of sterile water to dissolve the DNA.
 3. Close the tube and incubate for 10 minutes at room temperature.
 4. Briefly vortex the tube and then do a quick spin (less than 5000xg) to concentrate the liquid at the bottom.
 5. Store the suspended plasmid at -20°C. The DNA is stable for at least one year from date of shipping when stored at -20°C.

RefSeq: [NM_001098637.2](#)

RefSeq Size: 2323 bp

RefSeq ORF: 1500 bp

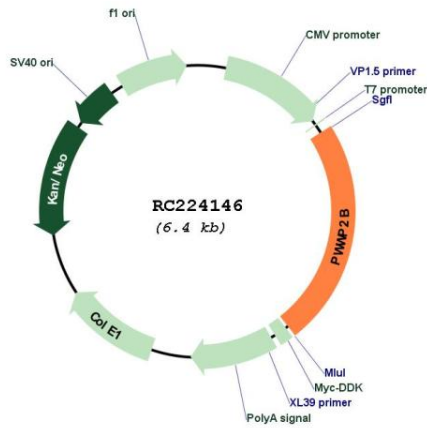
Locus ID: 170394

UniProt ID: [Q6NUJ5](#)

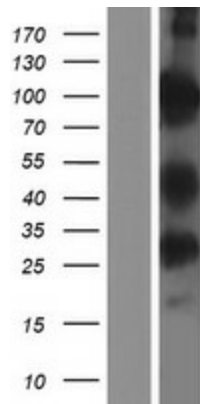
Cytogenetics: 10q26.3

MW: 53.4 kDa

Product images:



Circular map for RC224146



Western blot validation of overexpression lysate (Cat# [LY420659]) using anti-DDK antibody (Cat# [TA50011-100]). Left: Cell lysates from untransfected HEK293T cells; Right: Cell lysates from HEK293T cells transfected with RC224146 using transfection reagent MegaTran 2.0 (Cat# [TT210002]).