

Product datasheet for **RC224145**

DIABLO (NM_138930) Human Tagged ORF Clone

Product data:

Product Type: Expression Plasmids
Product Name: DIABLO (NM_138930) Human Tagged ORF Clone
Tag: Myc-DDK
Symbol: DIABLO
Synonyms: DFNA64; SMAC
Mammalian Cell Selection: Neomycin
Vector: pCMV6-Entry (PS100001)
E. coli Selection: Kanamycin (25 ug/mL)
ORF Nucleotide Sequence: >RC224145 representing NM_138930
Red=Cloning site Blue=ORF Green=Tags(s)

TTTTGTAATACGACTCACTATAGGGCGGCCGGAATTCGTCGACTGGATCCGGTACCGAGGAGATCTGCC
GCC**CGATCGCC**

ATGAAATCTGACTTCTACTTCCAGAAATCAGAGCCTCATTCCCTTAGTAGTGAAGCATTGATGAGGAGAG
CAGTGTCTTTGGTAACAGATAGCACCTCTACCTTTCTCTCTCAGACCACATATGCGTTGATTGAAGCTAT
TACTGAATATACTAAGGCTGTTTATACCTTAACCTCTCTTTACCGACAATATAACAAGTTTACTTGGGAAA
ATGAATTCAGAGGAGGAAGATGAAGTGTGGCAGGTGATCATAGGAGCCAGAGCTGAGATGACTTCAAAC
ACCAAGAGTACTTGAAGCTGAAACCACCTGGATGACTGCAGTTGGTCTTTCAGAGATGGCAGCAGAAGC
TGCAATCAAACCTGGCGCAGATCAGGCCTCTATAACCGCCAGGAATCACATTGAGCTGGTAAACTGCAG
GTGGAAGAGGTGCACCAGCTCTCCCGAAAGCAGAAACCAAGCTGGCAGAAGCACAGATAGAAGAGCTCC
GTCAGAAAACACAGGAGGAAGGGGAGGAGCGGGCTGAGTCGGAGCAGGAGGCCTACCTGCGTGAGGAT

ACGCGTACGCGGCCGCTCGAGCAGAAACTCATCTCAGAAGAGGATCTGGCAGCAAATGATATCCTGGATT
ACAAGGATGACGACGATAAGGTTTAA

Protein Sequence: >RC224145 representing NM_138930
Red=Cloning site Green=Tags(s)
MKSDFYFQKSEPHLSSEALMRRVSLVTDSTSTFLSQTYYALIEAITEYTKAVYTLTSLYRQYTSLLGK
MNSEEEDEVQVIIGARAEMTSKHQEYKLETTWMTAVGLSEMAAEAYQTGADQASITARNHIQLVKLQ
VEEVHQLSRKAETKLAEAQIEELRQKTQEEGEERAESEQEAYLRED

TRTRPLEQKLISEEDLAANDILDYKDDDDKV

Chromatograms: https://cdn.origene.com/chromatograms/ja1432_f11.zip



Restriction Sites: SgfI-MluI

Cloning Scheme:



ACCN: NM_138930

ORF Size: 558 bp

OTI Disclaimer: The molecular sequence of this clone aligns with the gene accession number as a point of reference only. However, individual transcript sequences of the same gene can differ through naturally occurring variations (e.g. polymorphisms), each with its own valid existence. This clone is substantially in agreement with the reference, but a complete review of all prevailing variants is recommended prior to use. [More info](#)

OTI Annotation: This clone was engineered to express the complete ORF with an expression tag. Expression varies depending on the nature of the gene.

Components: The ORF clone is ion-exchange column purified and shipped in a 2D barcoded Matrix tube containing 10ug of transfection-ready, dried plasmid DNA (reconstitute with 100 ul of water).

Reconstitution Method:

1. Centrifuge at 5,000xg for 5min.
2. Carefully open the tube and add 100ul of sterile water to dissolve the DNA.
3. Close the tube and incubate for 10 minutes at room temperature.
4. Briefly vortex the tube and then do a quick spin (less than 5000xg) to concentrate the liquid at the bottom.
5. Store the suspended plasmid at -20°C. The DNA is stable for at least one year from date of shipping when stored at -20°C.

RefSeq: [NM_138930.3](#)

RefSeq Size: 2455 bp

RefSeq ORF: 561 bp

Locus ID: 56616

UniProt ID: [Q9NR28](#)

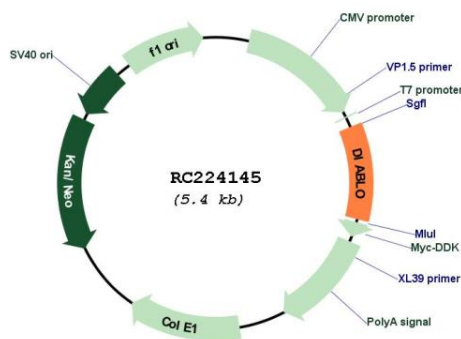
Cytogenetics: 12q24.31

Protein Families: Transmembrane

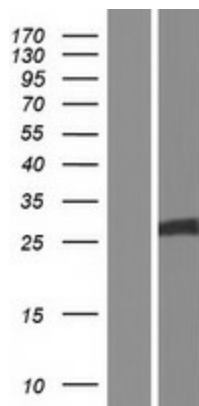
MW: 21.7 kDa

Gene Summary: This gene encodes an inhibitor of apoptosis protein (IAP)-binding protein. The encoded mitochondrial protein enters the cytosol when cells undergo apoptosis, and allows activation of caspases by binding to inhibitor of apoptosis proteins. Overexpression of the encoded protein sensitizes tumor cells to apoptosis. A mutation in this gene is associated with young-adult onset of nonsyndromic deafness-64. Alternative splicing results in multiple transcript variants encoding different isoforms. [provided by RefSeq, May 2013]

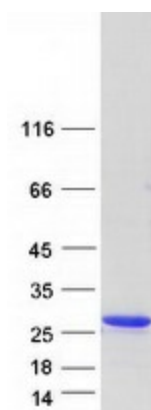
Product images:



Circular map for RC224145



Western blot validation of overexpression lysate (Cat# [LY408473]) using anti-DDK antibody (Cat# [TA50011-100]). Left: Cell lysates from untransfected HEK293T cells; Right: Cell lysates from HEK293T cells transfected with RC224145 using transfection reagent MegaTran 2.0 (Cat# [TT210002]).



Coomassie blue staining of purified DIABLO protein (Cat# [TP324145]). The protein was produced from HEK293T cells transfected with DIABLO cDNA clone (Cat# RC224145) using MegaTran 2.0 (Cat# [TT210002]).