

## Product datasheet for **RC224141L3V**

### PD L2 (PDCD1LG2) (NM\_025239) Human Tagged ORF Clone Lentiviral Particle

#### Product data:

Product Type:	Lentiviral Particles
Product Name:	PD L2 (PDCD1LG2) (NM_025239) Human Tagged ORF Clone Lentiviral Particle
Symbol:	PDCD1LG2
Synonyms:	B7DC; bA574F11.2; Btdc; CD273; PD-L2; PDCD1L2; PDL2
Mammalian Cell Selection:	Puromycin
Vector:	pLenti-C-Myc-DDK-P2A-Puro (PS100092)
Tag:	Myc-DDK
ACCN:	NM_025239
ORF Size:	819 bp
ORF Nucleotide Sequence:	The ORF insert of this clone is exactly the same as(RC224141).
OTI Disclaimer:	The molecular sequence of this clone aligns with the gene accession number as a point of reference only. However, individual transcript sequences of the same gene can differ through naturally occurring variations (e.g. polymorphisms), each with its own valid existence. This clone is substantially in agreement with the reference, but a complete review of all prevailing variants is recommended prior to use. <a href="#">More info</a>
OTI Annotation:	This clone was engineered to express the complete ORF with an expression tag. Expression varies depending on the nature of the gene.
RefSeq:	<a href="#">NM_025239.2</a> , <a href="#">NP_079515.1</a>
RefSeq Size:	1518 bp
RefSeq ORF:	822 bp
Locus ID:	80380
UniProt ID:	<a href="#">Q9BQ51</a>
Cytogenetics:	9p24.1
Domains:	IG
Protein Families:	Transmembrane



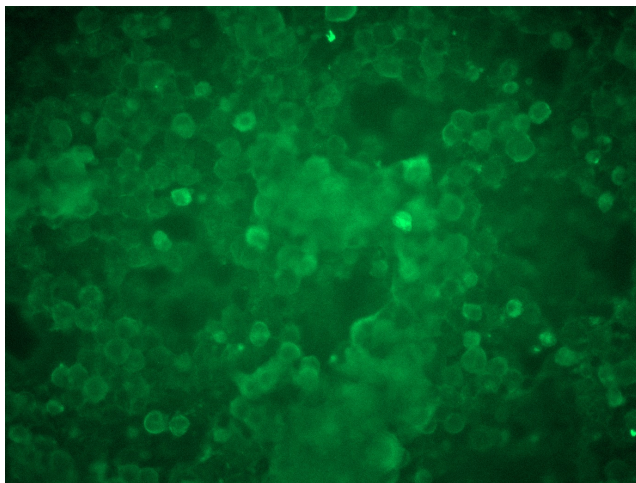
[View online »](#)

**Protein Pathways:** Cell adhesion molecules (CAMs)

**MW:** 30.8 kDa

**Gene Summary:** Involved in the costimulatory signal, essential for T-cell proliferation and IFNG production in a PDCD1-independent manner. Interaction with PDCD1 inhibits T-cell proliferation by blocking cell cycle progression and cytokine production (By similarity).[UniProtKB/Swiss-Prot Function]

**Product images:**



[RC224141L3] was used to prepare Lentiviral particles using [TR30037] packaging kit. HEK293T cells were transduced with RC224141L3V particle to overexpress human PDCD1LG2-Myc-DDK fusion protein.