

## Product datasheet for **RC224132L4V**

### **Klotho (KL) (NM\_004795) Human Tagged ORF Clone Lentiviral Particle**

#### **Product data:**

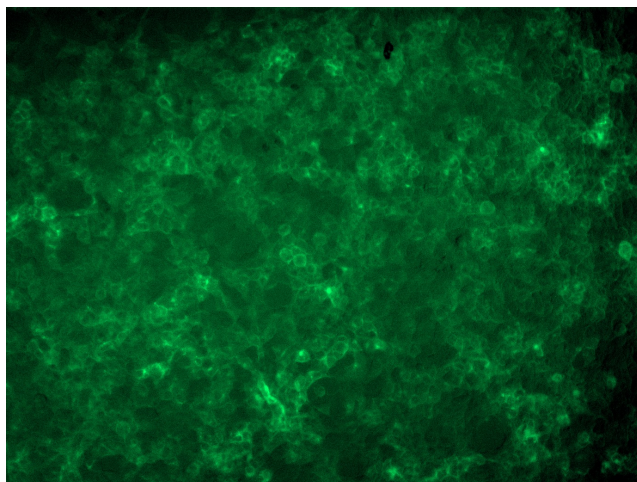
Product Type:	Lentiviral Particles
Product Name:	Klotho (KL) (NM_004795) Human Tagged ORF Clone Lentiviral Particle
Symbol:	Klotho
Synonyms:	HFTC3
Mammalian Cell Selection:	Puromycin
Vector:	pLenti-C-mGFP-P2A-Puro (PS100093)
Tag:	mGFP
ACCN:	NM_004795
ORF Size:	3036 bp
ORF Nucleotide Sequence:	The ORF insert of this clone is exactly the same as(RC224132).
OTI Disclaimer:	The molecular sequence of this clone aligns with the gene accession number as a point of reference only. However, individual transcript sequences of the same gene can differ through naturally occurring variations (e.g. polymorphisms), each with its own valid existence. This clone is substantially in agreement with the reference, but a complete review of all prevailing variants is recommended prior to use. <a href="#">More info</a>
OTI Annotation:	This clone was engineered to express the complete ORF with an expression tag. Expression varies depending on the nature of the gene.
RefSeq:	<a href="#">NM_004795.2</a> , <a href="#">NP_004786.2</a>
RefSeq Size:	5003 bp
RefSeq ORF:	3039 bp
Locus ID:	9365
UniProt ID:	<a href="#">Q9UEF7</a>
Cytogenetics:	13q13.1
Protein Families:	Secreted Protein, Transmembrane
MW:	116 kDa



[View online »](#)

**Gene Summary:**

This gene encodes a type-I membrane protein that is related to beta-glucosidases. Reduced production of this protein has been observed in patients with chronic renal failure (CRF), and this may be one of the factors underlying the degenerative processes (e.g., arteriosclerosis, osteoporosis, and skin atrophy) seen in CRF. Also, mutations within this protein have been associated with ageing and bone loss. [provided by RefSeq, Jul 2008]

**Product images:**

[RC224132L4] was used to prepare Lentiviral particles using [TR30037] packaging kit. HEK293T cells were transduced with RC224132L4V particle to overexpress human KL-mGFP fusion protein.