

Product datasheet for **RC224117**

TESK2 (NM_007170) Human Tagged ORF Clone

Product data:

Product Type:	Expression Plasmids
Product Name:	TESK2 (NM_007170) Human Tagged ORF Clone
Tag:	Myc-DDK
Symbol:	TESK2
Mammalian Cell Selection:	Neomycin
Vector:	pCMV6-Entry (PS100001)
E. coli Selection:	Kanamycin (25 ug/mL)



[View online »](#)

ORF Nucleotide Sequence:

>RC224117 representing NM_007170
 Red=Cloning site Blue=ORF Green=Tags(s)

TTTTGTAATACGACTCACTATAGGGCGGCCGGAATTCGTCGACTGGATCCGGTACCGAGGAGATCTGCC
 GCC**CGATCGCC**

ATGGATCGGAGCAAACGGAATCAATTGCAGGATTTCTCCACGTGTGGAGCGTCTTGAAGATTTGAAG
 GAGGTGGTGGAGGAGAAGGAAATGTGAGCCAGGTGGGAAGAGTTTGGCCATCTTCGTATCGAGCTTTAT
 AAGTGCCTTTTCCAGACTGACGCGTTTGGATGATTTACCTGTGAAAAAATAGGGTCTGGCTTCTTTTCT
 GAAGTGTTC AAGGTACGACACCGAGCTTCTGGTCAGGTGATGGCTCTTAAGATGAACACATTGAGCAGTA
 ACCGGGCAAACATGCTGAAAGAAGTACAGCTCATGAATAGACTCTCCCATCCCAACATCCTTAGGTTTCAT
 GGGTGTATGTGTTTCATCAAGGACAATTGCATGCACTTACAGAGTATATCAACTCCGGAACTGGAACAG
 TTGCTAGACAGTAACCTGCATTTGCCTGGACTGTGAGGGTAAACTGGCCTATGACATAGCAGTGGGCC
 TCAGCTACCTTCACTTCAAAGGCATTTTTCATCGGGACCTCACATCTAAGAACTGCCTGATAAAGAGGGA
 TGAGAATGGTTACTCTGCAGTGGTAGTGACTTTGGCCTGGCTGAGAAGATCCCCGATGTCAGCATGGGG
 AGTGAGAAGCTGGCCGTGGTGGGTTCCCATTCGTGGATGGCACCTGAGGTTCTCCGAGATGAGCCCTATA
 ATGAAAAGGCAGATGTGTTCTCTTATGGTATCATCCTCTGCGAGATCATCGCCCGCATCCAGGCCGATCC
 GGACTATCTTCCCGCACAGAGAATTTCCGGCTGGACTATGATGCTTTCAGCACATGGTGGGAGACTGT
 CCCCAGATTTTCTGCAACTTACTTTCAACTGCTGTAACATGGATCCCAAACCTGCGCCCATCTTTTGTGG
 AGATTGGGAAGACCCTGGAGGAAATCTGAGCCGCTACAGGAAGAAGAGCAGGAGAGGGGATAGGAAGCT
 GCAGCCACAGCCAGGGGACTCTTGAGAAAGCACCTGGGGTGAAGCGACTAAGCTCACTGGATGACAAG
 ATCCCCACAAGTCACCATGCCAAGACGTACCATCTGGCTGTCTCGAAGCCAGTCAGATATCTTTTCCC
 GTAAGCCCCACGTACAGTGAGTGTCTTGAGCCATACTACCGCCACGAGATGGTGTCTGCCCGCACCCC
 CAAAGTCAACCCTTTTAGTGCTCGCCAGGACCTCATGGGGGCAAGATCAAGTTTTTTGACCTGCCCAGC
 AAGTCTGTCTCTCTGGTATTTGACCTGGATGCACCAGGGCCCGAACTATGCCCTGGCTGACTGGC
 AGGAGCCCTGGCCACCTATTCGCCGGTGGCGTTTCTTGCCTGGTTCGCTGAGTTCTTGCATCAAGA
 GGCTTGTCCATTTGTGGCCGGGAAGAATCGCTATCTGATGGGCCCCACCACGCCTAAGTAGTCTCAAG
 TACAGAGTTAAGAGATCCCACCTTCCGGCATCTGCCCTACCAGCTGCTCAAGCCCATGAGGCTATGG
 ACTGCTCCATTCTCCAGGAAGAAAATGGTTTTGGGTCCAGGCCACGGGACCAGTCCATGCCCTGCGGG
 TGCTTCTGAGGAGATGGAGGTAGAAGAAAGCCAGCAGGCTCACTCCAGCCACCTTCTCCACCTCAGGC
 ATAGGCCTGCAAACCCAGGGAAGCAGGATGGG

AG**CGGACCG**ACGCGTACGCGGCCGCTCGAGCAGAACTCATCTCAGAAGAGGATCTGGCAGCAAATGATATCC
 TGGATTACAAGGATGACGACGATAAGGTTTAA

Protein Sequence:

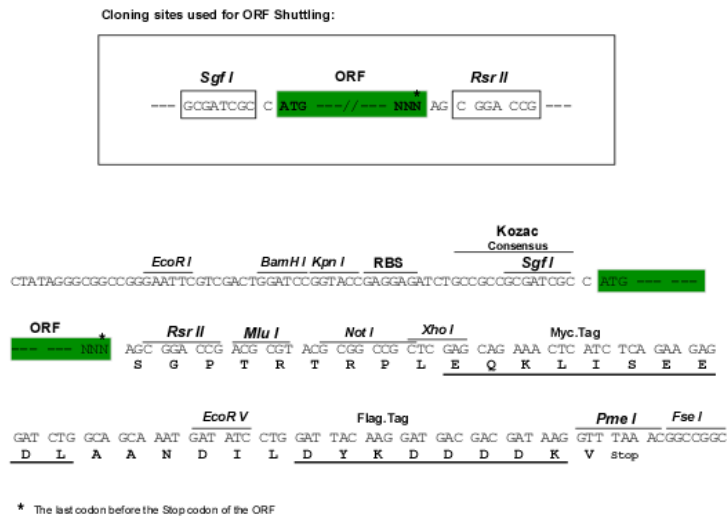
>RC224117 representing NM_007170
 Red=Cloning site Green=Tags(s)

MDRSKRNSIAGFPPRVERLEEFEGGGGEGNVSQVGRVWPSSYRALISAFSRLTRLDDFTCEKIGSGFFS
 EVFKVRHRASGQVMALKMNTLSSNRANMLKEVQLMNRLSHPNILRFMGVCVHQQLHALTEYINSNLEQ
 LLDSNLHLPWTVRVKLAYDIAVGLSYLHFKGIFHRDLTSKNCLIKRDENGYSAVVADFGLAEKIPDVSMG
 SEKLAVVGGSPFWMAPEVLRDEPYNEKADVFSYGIILCEIARIQADPDYLPRTENFGLDYDAFQHMVGDC
 PPDFLQLTFNCCNMDPKLRPSFVEIGKLEEILSRLQEEEQERDRKLQPTARGLLEKAPGVKRLSSLDK
 IPHKSPCPRRTIWLRSQSDIFSRKPPRTVSVLDPYYRPRDGAARTPKVNPFSARQDLMGGKIKFFDLPS
 KSVISLVFDLDAPGPGTMPLADWQEPLAPPIRRWRSLPGSPEFLHQEACPFVGREESLSDGPPRLSSLK
 YRVKEIPPFRASALPAAQAHEAMDCSIILQEENFGSRPQGTSPCPAGASEMEVEERPA GSTPATFSTSG
 IGLQTQKQDG

SGP**TRRRLEQKLI SEEDLAANDILDYKDDDDKV**

Restriction Sites:

Sgfl-RsrII

Cloning Scheme:


ACCN: NM_007170

ORF Size: 1713 bp

OTI Disclaimer: The molecular sequence of this clone aligns with the gene accession number as a point of reference only. However, individual transcript sequences of the same gene can differ through naturally occurring variations (e.g. polymorphisms), each with its own valid existence. This clone is substantially in agreement with the reference, but a complete review of all prevailing variants is recommended prior to use. [More info](#)

OTI Annotation: This clone was engineered to express the complete ORF with an expression tag. Expression varies depending on the nature of the gene.

Components: The ORF clone is ion-exchange column purified and shipped in a 2D barcoded Matrix tube containing 10ug of transfection-ready, dried plasmid DNA (reconstitute with 100 ul of water).

- Reconstitution Method:**
1. Centrifuge at 5,000xg for 5min.
 2. Carefully open the tube and add 100ul of sterile water to dissolve the DNA.
 3. Close the tube and incubate for 10 minutes at room temperature.
 4. Briefly vortex the tube and then do a quick spin (less than 5000xg) to concentrate the liquid at the bottom.
 5. Store the suspended plasmid at -20°C. The DNA is stable for at least one year from date of shipping when stored at -20°C.

RefSeq: [NM_007170.3](#)

RefSeq Size: 3093 bp

RefSeq ORF: 1716 bp

Locus ID: 10420

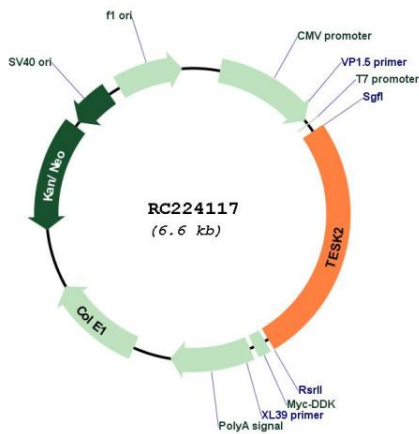
UniProt ID: [Q96S53](#)

Cytogenetics: 1p34.1

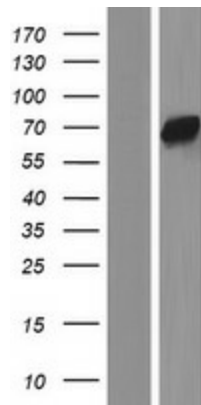
Domains: pkinase, TyrKc, S_TKc
Protein Families: Druggable Genome, Protein Kinase
MW: 63.5 kDa

Gene Summary: This gene product is a serine/threonine protein kinase that contains an N-terminal protein kinase domain that is structurally similar to the kinase domains of testis-specific protein kinase-1 and the LIM motif-containing protein kinases (LIMKs). Its overall structure is most related to the former, indicating that it belongs to the TESK subgroup of the LIMK/TESK family of protein kinases. This gene is predominantly expressed in testis and prostate. The developmental expression pattern of the rat gene in testis suggests an important role for this gene in meiotic stages and/or early stages of spermiogenesis. Alternative splicing results in multiple transcript variants. [provided by RefSeq, Mar 2016]

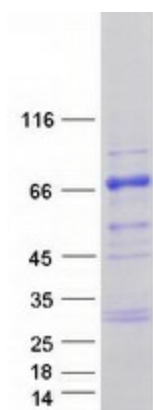
Product images:



Circular map for RC224117



Western blot validation of overexpression lysate (Cat# [LY416143]) using anti-DDK antibody (Cat# [TA50011-100]). Left: Cell lysates from untransfected HEK293T cells; Right: Cell lysates from HEK293T cells transfected with RC224117 using transfection reagent MegaTran 2.0 (Cat# [TT210002]).



Coomassie blue staining of purified TESK2 protein (Cat# [TP324117]). The protein was produced from HEK293T cells transfected with TESK2 cDNA clone (Cat# RC224117) using MegaTran 2.0 (Cat# [TT210002]).