

Product datasheet for **RC224105**

NT5C1B (NM_033253) Human Tagged ORF Clone

Product data:

Product Type:	Expression Plasmids
Product Name:	NT5C1B (NM_033253) Human Tagged ORF Clone
Tag:	Myc-DDK
Symbol:	NT5C1B
Synonyms:	AIRP; CN-IB; CN1B
Mammalian Cell Selection:	Neomycin
Vector:	pCMV6-Entry (PS100001)
E. coli Selection:	Kanamycin (25 ug/mL)



[View online »](#)

ORF Nucleotide Sequence:

>RC224105 representing NM_033253
 Red=Cloning site Blue=ORF Green=Tags(s)

TTTTGTAATACGACTCACTATAGGGCGGCCGGAATTCGTCGACTGGATCCGGTACCGAGGAGATCTGCC
 GCC**CGGATCGCC**

ATGAGTCAAACATCTCTCAAACAGAAAAAAGATGAGCCTGGAATGAGGTCCTCAAAGAGAGTCTAGAAG
 CAGAAAAAAGAAAGGAATCTGACAAAACAGGAGTTCGCTGAGCAATCAGGGATCACAAGAATCATCACT
 GCGGAAGACAGACTCTCGAGGGTACCTTGTCGCGAGTCAATGGTCTAGAATATCCCGAGGCCATCCACC
 AAGGCTCCATCCATAGATGAGCCTAGAAGCAGGAACACCAGTGCTAAGCTCCCCAGCAGCTCCACGAGCT
 CCCGGACTCCATCCACCTCCCCAAGCCTGCATGACTCCTCACCGCCGCGCTGTCCGGGCAGCCCTCGCT
 CCAGCCACCCGCGTCGCCCCAGCTGCCCGGTGCTGGACTCGCGGCTCCACGCCCCCAGAGCCCGAT
 CCTGGCTCCCGGCGCAGCACAAAATGCAAGAGAATCCGGAGGCTGGGCCAAGGCATCGTGGGGAAA
 TCCGCCAGACCCGGGACTCGCAGCCGCTGGAATATTCGCGCACGTCCCCACCGAGTGAAGTCTCCAG
 CCAGCGCAGGGGGATCTACCCCGCTCCACCCAGCTGGACCGCAACTCTGTGCGAGCAGCAGCAGCAG
 CAGCGGGAGGACGAGGACTACGAGGCTGCCTACTGGGCATCCATGAGGTCGTTCTACGAGAAGAACC
 CGAGCTGCTCGCGCCCTGGCCGCCAAACCCAAGAACGCCATCACCATGCTCTCTCATCTGCGCGCT
 CTTCAACATGGTGGACGGCAGGAAAATCTACGAGCAAGAGGGTCTGGAAAAGTACATGGAGTATCAGCTC
 ACCAATGAGAAGTCACTCCTGACCCCGGCCGCGGTTCCGCTTCGTCAGGCACCTACAGTATGTCAATG
 CTAGACTCCGTGATCTATCCTGATGAACAGGACTTATTTGATATTGTACTGATGACTAATAACCATGC
 CCAAGTGGGAGTGGGCTTATAAACAGCGTCAATCACTACGGCTTACTGATTGACCGCTTCTGTCTGACC
 GGGGAAAAGACCCATTGGCTATTTGAAGGCATATCTTACCAACTTGTATTTGCTGCAGATTGGAAA
 AAGTGAAGAGGCAATACAAGAAGGTATTGCCTCTGCGACAATGTTTATGGAGCCAAAGACATGGCTTA
 CTGTGACACTCAGCTCCGTGTAGCCTTTGATGGGGATGCTGTCTCTTCTGATGAGTCTGAACATTTT
 ACCAAGGAGCATGGGCTCGACAAATTCTCCAGTATGATACATTATGTAAAGTAAAGCCTTTGCTCAGG
 GTCCCCTAAAAGGCTTTCTGGAAGATTTAGGCAGACTGCAAAAAGAAGTTCTATGCCAAAAATGAACGGTT
 ACTTTGCTCTATCAGGACCTACCTGGTTACAGCTAGGAGTGCAGCCAGTTCAGGCGCCCGTGTGCTGAAG
 ACCCTTCGACGCTGGGGTCTAGAGATAGACGAAGCTCTTTTCTTGTGGAGCCCCAAAAGTCCCATCT
 TGGTGAAGATCCGGCCCCACATCTTCTTTGATGACCACATGTTCCACATTGAAGGGGCACAGAGTTAGG
 TTCATCGCAGCTTATGGCTTAAATAAAAAATTCAGTAGT

ACGCGTACGCGGCCGCTCGAGCAGAAACTCATCTCAGAAGAGGATCTGGCAGCAAATGATATCCTGGATT
 ACAAGGATGACGACGATAAGGTTTAA

Protein Sequence:

>RC224105 representing NM_033253
 Red=Cloning site Green=Tags(s)

MSQTSLKQKNEPGMRSSKESLEAEKRKESDKTGVRLSNQGSQESSLRKTDSTRGYLVRSQWSRISRSPST
 KAPSIDEPNRNTSAKLPSSTSSRTPSTSPSLHDSSPPLSGQPSLQPPASPQLPRSLDSRPPTPEPD
 PGSRRSTKMQENPEAWAQGIVREIRQTRDSQPLEYSRTSPTTEWKSSSQRRGIYPASTQLDRNSLSEQQQQ
 QREDEDDYEAAYWASMRSFYEKNPSCSRPWPPKPKNAITIALSSCALFNMVDGRKIYEQEGLEKMEYQL
 TNENVILTPGPAFRFVKALQYVNARLRLYPDEQDLFDIVLMTNHAQVGVRLINSVNHYGLLIDRFCLT
 GGDPIGYLKAYLTNLYIAADSEKVQEAIQEGIASATMFDGAKDMAYCDTQLRVAFDGDAVLFSDSEHF
 TKEHGLDKFFQYDTLCEKPLAQGLKGFLEDLGRLLQKFKYAKNERLLCPVRTYLVARSAAASSGARVLK
 TLRRWGLEIDEALFLAGAPKSPILVKIRPHIFFDDHMFHIEGAQRLGSI AAYGFNKKFSS

TRTRPLEQKLISEEDLAANDILDYKDDDDKV

Chromatograms:

https://cdn.origene.com/chromatograms/mk6505_a05.zip

Restriction Sites:

SgfI-MluI

Cloning Scheme:

ACCN:

NM_033253

ORF Size:

1650 bp

OTI Disclaimer:

The molecular sequence of this clone aligns with the gene accession number as a point of reference only. However, individual transcript sequences of the same gene can differ through naturally occurring variations (e.g. polymorphisms), each with its own valid existence. This clone is substantially in agreement with the reference, but a complete review of all prevailing variants is recommended prior to use. [More info](#)

OTI Annotation:

This clone was engineered to express the complete ORF with an expression tag. Expression varies depending on the nature of the gene.

Components:

The ORF clone is ion-exchange column purified and shipped in a 2D barcoded Matrix tube containing 10ug of transfection-ready, dried plasmid DNA (reconstitute with 100 ul of water).

Reconstitution Method:

1. Centrifuge at 5,000xg for 5min.
2. Carefully open the tube and add 100ul of sterile water to dissolve the DNA.
3. Close the tube and incubate for 10 minutes at room temperature.
4. Briefly vortex the tube and then do a quick spin (less than 5000xg) to concentrate the liquid at the bottom.
5. Store the suspended plasmid at -20°C. The DNA is stable for at least one year from date of shipping when stored at -20°C.

RefSeq:
[NM_033253.4](#)
RefSeq Size:

2684 bp

RefSeq ORF:

1653 bp

Locus ID:

93034

UniProt ID:
[Q96P26](#)

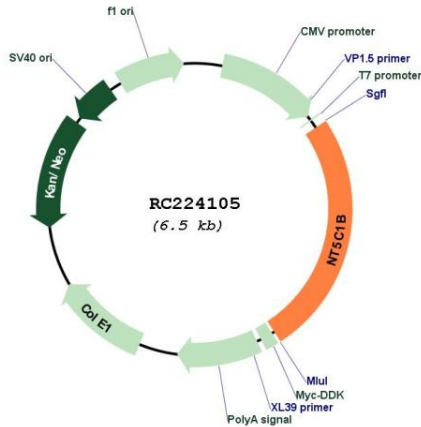
Cytogenetics: 2p24.2

Protein Pathways: Metabolic pathways, Nicotinate and nicotinamide metabolism, Purine metabolism, Pyrimidine metabolism

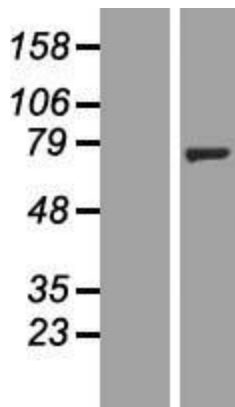
MW: 61.8 kDa

Gene Summary: Cytosolic 5-prime nucleotidases, such as NT5C1B, catalyze production of adenosine, which regulates diverse physiologic processes (Sala-Newby and Newby, 2001 [PubMed 11690631]). [supplied by OMIM, Mar 2008]

Product images:



Circular map for RC224105



Western blot validation of overexpression lysate (Cat# [LY409657]) using anti-DDK antibody (Cat# [TA50011-100]). Left: Cell lysates from untransfected HEK293T cells; Right: Cell lysates from HEK293T cells transfected with RC224105 using transfection reagent MegaTran 2.0 (Cat# [TT210002]).