

Product datasheet for **RC224091**

CD164L2 (NM_207397) Human Tagged ORF Clone

Product data:

Product Type: Expression Plasmids
Product Name: CD164L2 (NM_207397) Human Tagged ORF Clone
Tag: Myc-DDK
Symbol: CD164L2
Synonyms: EAPG6122; UNQ6122
Mammalian Cell Selection: Neomycin
Vector: pCMV6-Entry (PS100001)
E. coli Selection: Kanamycin (25 ug/mL)
ORF Nucleotide Sequence: >RC224091 representing NM_207397
Red=Cloning site Blue=ORF Green=Tags(s)

TTTTGTAATACGACTCACTATAGGGCGGCCGGAATTCGTCGACTGGATCCGGTACCGAGGAGATCTGCC
GCC**CGATCGCC**

ATGGAGGCTCCGGGACCCCGCGCCTTGCAGACTGCGCTCTGTGGCGGCTGTTGCTGCCTCCTCCTATGTG
CCCAGCTGGCTGTGGCTGGTAAAGGAGCTCGAGGCTTTGGGAGGGGAGCCCTGATCCGCCTGAATATCTG
GCCGGCGTCCAAGGGGCTGCAAACAGCTGGAGGTCTGTGAGCACTGCGTGGAGGGAGACAGAGCGCGC
AATCTCTCCAGCTGCATGTGGGAGCAGTCCGGCCAGAGGAGCCAGGACACTGTGTGCCCAATCTGAGG
TGGTCAAGGAAGTTGCTCCATCTACAACCGCTCAGAGGCATGTCCAGCTGCTCACCACCACCCACCTA
TGAAACGAAGACAGTCACAACAGGGAGCCCCAGTCCCTGAGGCCACAGCCCTGGATTTGACGGGGCC
AGCTTTATCGGAGGTGTCGTGCTGGTGTGAGCCTACAGCGGTTGGCTTTCTTTGTGCTGCACTTCTCTCA
AGGCCAAGGACAGCACCTACCAGACGCTG

ACGCGTACGCGGCCGCTCGAGCAGAACTCATCTCAGAAGAGGATCTGGCAGCAAATGATATCCTGGATT
ACAAGGATGACGACGATAAGGTTTAA

Protein Sequence: >RC224091 representing NM_207397
Red=Cloning site Green=Tags(s)
MEAPGPRALRTALCGGCCLLLLCAQLAVAGKGARGFGRGALIRLNIWPAVQGACKQLEVCEHCVEGDRAR
NLSSCMWEQCRPEEPGHCVAQSEVVKEGCSIYNRSEACPAAHHHTYEPKTVTTGSPVPEAHSFGFDGA
SFIGGVVLVLSLQAVAFFVLHFLKAKDSTYQTL

TRTRPLEQKLISEEDLAANDILDYKDDDDKV

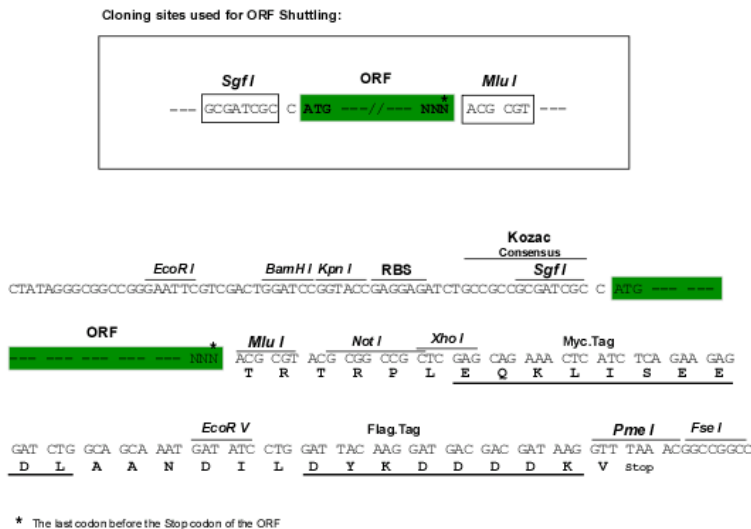
Chromatograms: https://cdn.origene.com/chromatograms/mg3623_h04.zip



[View online »](#)

Restriction Sites: SgfI-MluI

Cloning Scheme:



ACCN: NM_207397

ORF Size: 519 bp

OTI Disclaimer: The molecular sequence of this clone aligns with the gene accession number as a point of reference only. However, individual transcript sequences of the same gene can differ through naturally occurring variations (e.g. polymorphisms), each with its own valid existence. This clone is substantially in agreement with the reference, but a complete review of all prevailing variants is recommended prior to use. [More info](#)

OTI Annotation: This clone was engineered to express the complete ORF with an expression tag. Expression varies depending on the nature of the gene.

Components: The ORF clone is ion-exchange column purified and shipped in a 2D barcoded Matrix tube containing 10ug of transfection-ready, dried plasmid DNA (reconstitute with 100 ul of water).

Reconstitution Method:

1. Centrifuge at 5,000xg for 5min.
2. Carefully open the tube and add 100ul of sterile water to dissolve the DNA.
3. Close the tube and incubate for 10 minutes at room temperature.
4. Briefly vortex the tube and then do a quick spin (less than 5000xg) to concentrate the liquid at the bottom.
5. Store the suspended plasmid at -20°C. The DNA is stable for at least one year from date of shipping when stored at -20°C.

RefSeq: [NM_207397.2](#)

RefSeq Size: 1517 bp

RefSeq ORF: 522 bp

Locus ID: 388611

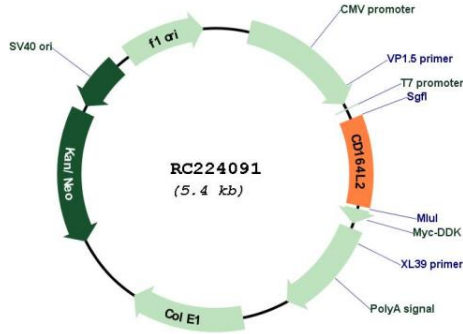
UniProt ID: [Q6UWJ8](#)

Cytogenetics: 1p36.11

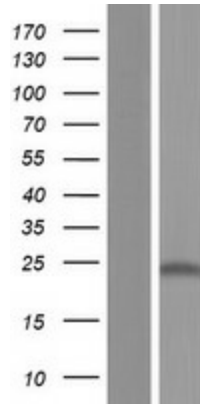
Protein Families: Transmembrane

MW: 18.2 kDa

Product images:



Circular map for RC224091



Western blot validation of overexpression lysate (Cat# [LY404007]) using anti-DDK antibody (Cat# [TA50011-100]). Left: Cell lysates from untransfected HEK293T cells; Right: Cell lysates from HEK293T cells transfected with RC224091 using transfection reagent MegaTran 2.0 (Cat# [TT210002]).