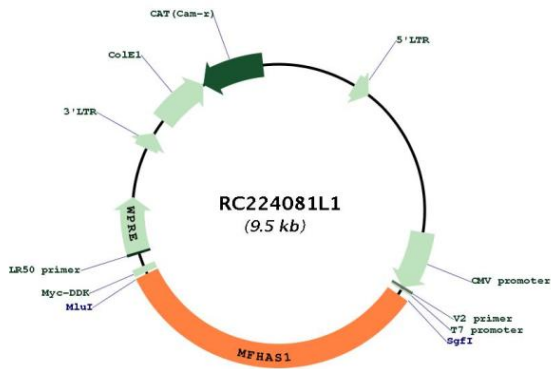
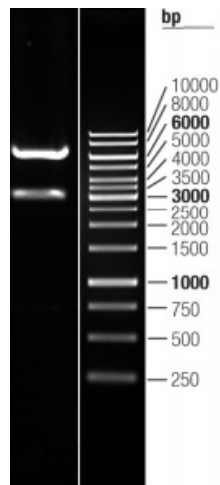


OTI Disclaimer:	The molecular sequence of this clone aligns with the gene accession number as a point of reference only. However, individual transcript sequences of the same gene can differ through naturally occurring variations (e.g. polymorphisms), each with its own valid existence. This clone is substantially in agreement with the reference, but a complete review of all prevailing variants is recommended prior to use. More info
OTI Annotation:	This clone was engineered to express the complete ORF with an expression tag. Expression varies depending on the nature of the gene.
Components:	The ORF clone is ion-exchange column purified and shipped in a 2D barcoded Matrix tube containing 10ug of transfection-ready, dried plasmid DNA (reconstitute with 100 ul of water).
Reconstitution Method:	<ol style="list-style-type: none"> 1. Centrifuge at 5,000xg for 5min. 2. Carefully open the tube and add 100ul of sterile water to dissolve the DNA. 3. Close the tube and incubate for 10 minutes at room temperature. 4. Briefly vortex the tube and then do a quick spin (less than 5000xg) to concentrate the liquid at the bottom. 5. Store the suspended plasmid at -20°C. The DNA is stable for at least one year from date of shipping when stored at -20°C.
RefSeq:	NM_004225.1
RefSeq Size:	3159 bp
RefSeq ORF:	3159 bp
Locus ID:	9258
UniProt ID:	Q9Y4C4
Cytogenetics:	8p23.1
MW:	116.8 kDa
Gene Summary:	Identified in a human 8p amplicon, this gene is a potential oncogene whose expression is enhanced in some malignant fibrous histiocytomas (MFH). The primary structure of its product includes an ATP/GTP-binding site, three leucine zipper domains, and a leucine-rich tandem repeat, which are structural or functional elements for interactions among proteins related to the cell cycle, and which suggest that overexpression might be oncogenic with respect to MFH. [provided by RefSeq, Jul 2008]

Product images:



Circular map for RC224081L1



Double digestion of RC224081L1 using SgfI and MluI