

Product datasheet for **RC224078**

ZNF800 (NM_176814) Human Tagged ORF Clone

Product data:

Product Type:	Expression Plasmids
Product Name:	ZNF800 (NM_176814) Human Tagged ORF Clone
Tag:	Myc-DDK
Symbol:	ZNF800
Mammalian Cell Selection:	Neomycin
Vector:	pCMV6-Entry (PS100001)
E. coli Selection:	Kanamycin (25 ug/mL)



[View online »](#)

ORF Nucleotide
Sequence:

>RC224078 ORF sequence
Red=Cloning site Blue=ORF Green=Tags(s)

TTTTGTAATACGACTCACTATAGGGCGGCCGGGAATTCGTCGACTGGATCCGGTACCGAGGAGATCTGCC
GCCCGCATCGCC

ATGCCTTTAAGGGACAAATACTGTCAGACTGACCACCATCATCACGGATGCTGTGAACCAGTTTATATCC
TGGAACTTGAGATCCTCTTTGTTACAGCAACCACTACAGACATCCAAATCTGGTATTCAACAAATAAT
TGAGTGCTTTTCGATCAGGAACTAAACAACCTAAGCATATTTTATTTAAAAGATGTGGACACTATTTTGA
TGTAAGTTATGCCGAGTCTCTTCAGAGGATTACCAAAATTAATTACCCATAAAAAATTCTACTGCCAC
CAAGTCTCCAGATGGATGACAACCTTCTGATGTAATGATAAACAAAGCCAAGCCATAAATGATCTCCT
AGAAGCCATATATCCAAGTGTGGACAAACGAGAATATATTATTAAGCTAGAACCATAGAACTAATCAA
AATGCAGTATTTCAATATATTTTCGAGGACTGATAATCCTATTGAAGTCACAGAGTCAAGCAGTACTCCTG
AACAAACCGAAGTTCAGATACAGGAACTAGCACTGAACAGTCAAAAACAGTACCGGTTACAGATACAGA
GGTGAAAAGTGTAGAGCCCTCCTGTTGAGATTGTTACAGATGAAGTTCACCTACATCTGATGAACAA
CCTCAGGAGTCGAGGCTGACTTGGAACTTCTGACAATTCGATTTTGGTCCACAGTTGATATGTTGTC
TTTGTAGAAAAGAATTCAATTCTAGACGAGGTGTTTCGCCGTCACATTTCGAAAAGTACACAAGAAAAGAT
GGAAGAACTAAAAAGTACATTGAAACAGAAAGAATCCAAACCAATCCTCTAAAGGACGCGAGTAAGAAT
GTTCTAGTTCCATTAAGTAGGAGTTGTCCAGTATGTTGTAATCATTTGCTACAAAAGCGAATGTAAGGA
GGCATTGTTGATGAAGTTCATAGAGGACTAAGGAGGGATTCAATTACTCCTGATATAGCAACAAAGCCTGG
GCAACCTTTGTTCTGGATTCTATTTCTCTAAAAATCTTTAAGACTCGAAAACAAAAGTCTTCTTCA
AAGGCTGAATACAATTTAACTGCATGCAATGCCTCCTTTGCAAGAGGAAATATAGTTCACAAATAATGC
TTAAAAGACATATGCAAATTTGCCACAAGATAACTCTTTCTGGAACAAACTCTAAAAGAGAAAAAGGCC
TAATAATACTGCCAACAGTTCAGAAATAAAAGTTAAAGTTGAACCAAGCAGATTCTGTAGAATCTTCACCC
CCTTCCATTACCCATTCTCCACAGAATGAATTAAGGGAACAAATCATTCAAATGAAAAAAGAACACAC
CGGCAGCACAGAAAAATAAAGTTAAACAAGACTCTGAAAGCCCTAAATCAACTAGTCCGTCGGCTGCAGG
TGGCCAGCAAAAACCAGAAAACCAAACTTTCAGCTGGCTTTGACTTTAAGCAACTTTACTGTAACTT
TGTAACGTCAGTTTACTTCCAACAGAACTTGACTAAACACATCGAGTTGCACACAGATGGAAATAACA
TTTATGTTAAATCTACAAGTGCCTCTTGCCTTATGAACTCGTCGGAAACGTGATGTGATACGACA
TATAACTGTGGTTCATAAAAAGTCATCTCGTTATCTTGGGAAAAAAGCAGCCAGTTTAGAGATCAGAGCT
ATAAAAAAGCCTATTGATTTTGTCTAAATAAAGTGGCAAAAAGAGGCCCTTCGAGGGATGAAGCAAAAC
ATAGTGATTCAAAACATGATGGCACTTCTAACTCTCCTAGTAAAAAGTATGAAGTAGCTGACGTCGGTAT
TGAAGTAAAAGTCACAAAAAATTTTCTCTTACAGATGCAATAAATGTGAAAGGCATTTGCCAAAAAG
ACTTACCTTGAACATCATAAGAAAACCTATAAGGCAAAATGCTTCCAATTCACCTGAAGGAAAAACAAACCA
AAGGCCGAAGTACAAGATCTAAGGCTCTTGTC

ACGCGTACGCGGCCGCTCGAGCAGAACTCATCTCAGAAGAGGATCTGGCAGCAATGATATCCTGGATT
ACAAGGATGACGACGATAAGGTTTAA

Protein Sequence: >RC224078 protein sequence
Red=Cloning site Green=Tags(s)

MPLRDKYCQTDHHHHCCEPVYILEPGDPPLLQQPLQTSKSGIQIIECFRSGTKQLKHILLKDVDITFE
 CKLCRSLFRGLPNLITHKKFYCPPSLQMDNLPDVNDKQSQAINDLLEAIYPSVDKREYI IKLEPIETNQ
 NAVFYQISRTDNPIEVTESSSTPEQTEVQIQETSTEQSKTVPVTDTEVETVEPPPVEIVTDEVAPTSDEQ
 PQESQADLETSDNSDFGHQLICCLRKEFNRRGVRHHRIRKVHKKKMEELKKYIETRKPNPQSSKGRSKN
 VLVPLSRSCPVCCKSFATKANVRRHFDEVHRGLRRDSITPDIATKPGQPLFLDSISPKKSFKTRKQKSSS
 KAEYNLTACKCLLCKRKYSSQIMLKRHMQIVHKITL SGTNSKREKGPNNANSSEIKVKVEPADSVESPP
 PSITHSPQNELKGTNHSNEKNTPAAQKNKVKQDSESPKSTSPSAAGGQKTRKPKLSAGDFKQLYCKL
 CKRQFTSKQNLTKHIELHTDGNIIYVKFYKPLCTYETRRKRDVIRHITVVHKKSSRYLGKITASLEIRA
 IKKPIDFVLNKVAKRGP SRDEAKHSDSKHDGTSNPSKKEVADVGVIEVKVTKNFSLHRCNKCGKAFK
 TYLEHHKKT HKANASNSPEGNKTKGRSTRSKALV

TRTRPLEQKLI SEEDLAANDILDYKDDDDKV

Chromatograms: https://cdn.origene.com/chromatograms/mk6561_a06.zip

Restriction Sites: SgfI-MluI

Cloning Scheme:



ACCN: NM_176814

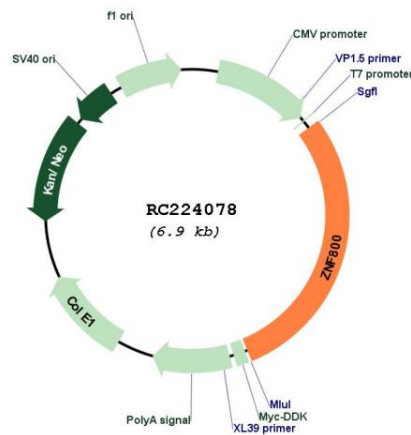
ORF Size: 1992 bp

OTI Disclaimer: The molecular sequence of this clone aligns with the gene accession number as a point of reference only. However, individual transcript sequences of the same gene can differ through naturally occurring variations (e.g. polymorphisms), each with its own valid existence. This clone is substantially in agreement with the reference, but a complete review of all prevailing variants is recommended prior to use. [More info](#)

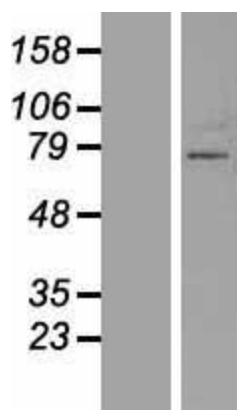
OTI Annotation: This clone was engineered to express the complete ORF with an expression tag. Expression varies depending on the nature of the gene.

- Components:** The ORF clone is ion-exchange column purified and shipped in a 2D barcoded Matrix tube containing 10ug of transfection-ready, dried plasmid DNA (reconstitute with 100 ul of water).
- Reconstitution Method:**
1. Centrifuge at 5,000xg for 5min.
 2. Carefully open the tube and add 100ul of sterile water to dissolve the DNA.
 3. Close the tube and incubate for 10 minutes at room temperature.
 4. Briefly vortex the tube and then do a quick spin (less than 5000xg) to concentrate the liquid at the bottom.
 5. Store the suspended plasmid at -20°C. The DNA is stable for at least one year from date of shipping when stored at -20°C.
- RefSeq:** [NM_176814.5](#)
- RefSeq Size:** 4242 bp
- RefSeq ORF:** 1995 bp
- Locus ID:** 168850
- UniProt ID:** [Q2TB10](#)
- Cytogenetics:** 7q31.33
- MW:** 75.2 kDa
- Gene Summary:** May be involved in transcriptional regulation.[UniProtKB/Swiss-Prot Function]

Product images:



Circular map for RC224078



Western blot validation of overexpression lysate (Cat# [LY406050]) using anti-DDK antibody (Cat# [TA50011-100]). Left: Cell lysates from untransfected HEK293T cells; Right: Cell lysates from HEK293T cells transfected with RC224078 using transfection reagent MegaTran 2.0 (Cat# [TT210002]).