

Product datasheet for **RC224075**

OCM2 (NM_006188) Human Tagged ORF Clone

Product data:

Product Type: Expression Plasmids
Product Name: OCM2 (NM_006188) Human Tagged ORF Clone
Tag: Myc-DDK
Symbol: OCM2
Synonyms: OCM; OM
Mammalian Cell Selection: Neomycin
Vector: pCMV6-Entry (PS100001)
E. coli Selection: Kanamycin (25 ug/mL)
ORF Nucleotide Sequence: >RC224075 ORF sequence
Red=Cloning site Blue=ORF Green=Tags(s)

TTTTGTAATACGACTCACTATAGGGCGGCCGGAATTCGTCGACTGGATCCGGTACCGAGGAGATCTGCC
GCC**CGGATCGCC**

ATGAGCATCACGGACGTGCTCAGTGCTGACGACATTGCAGCAGCGCTCCAGGAATGCCGAGACCCAGACA
CTTTTGAACCCAAAAATTTCCAGACATCAGGCCTCTCCAAGATGTCAGCCAATCAGGTGAAGGATGT
TTCCGGTTCATAGACAACGACCAGAGCGGGTACCTGGATGAAGAAGAGCTTAAGTTTTCTCCAGAAG
TTTGAGAGTGGTCCAGAGAACTGACCGAGTCAGAAACCAAGTCCTTGATGGCTGCGCGGATAATGATG
GAGATGGGAAAAATTGGAGCAGAGGAATTCAGGAAATGGTGCATTCT

ACGCGTACGCGGCCGCTCGAGCAGAAACTCATCTCAGAAGAGGATCTGGCAGCAAATGATATCCTGGATT
ACAAGGATGACGACGATAAGGTTTAA

Protein Sequence: >RC224075 protein sequence
Red=Cloning site Green=Tags(s)
MSITDVL SADDIAALQECRDPDTFEPQKFFQTSGLSKMSANQVKDVFRRFIDNDQSGYLDEEELKFFLQK
FESGAREL TESETKSLMAAADNDGDGKIGAEFQEMVHS

TRTRPLEQKLISEEDLAANDILDYKDDDDKV

Chromatograms: https://cdn.origene.com/chromatograms/mk6462_a06.zip

Restriction Sites: SgfI-MluI



[View online »](#)

Cloning Scheme:


ACCN: NM_006188

ORF Size: 327 bp

OTI Disclaimer: The molecular sequence of this clone aligns with the gene accession number as a point of reference only. However, individual transcript sequences of the same gene can differ through naturally occurring variations (e.g. polymorphisms), each with its own valid existence. This clone is substantially in agreement with the reference, but a complete review of all prevailing variants is recommended prior to use. [More info](#)

OTI Annotation: This clone was engineered to express the complete ORF with an expression tag. Expression varies depending on the nature of the gene.

Components: The ORF clone is ion-exchange column purified and shipped in a 2D barcoded Matrix tube containing 10ug of transfection-ready, dried plasmid DNA (reconstitute with 100 ul of water).

- Reconstitution Method:**
1. Centrifuge at 5,000xg for 5min.
 2. Carefully open the tube and add 100ul of sterile water to dissolve the DNA.
 3. Close the tube and incubate for 10 minutes at room temperature.
 4. Briefly vortex the tube and then do a quick spin (less than 5000xg) to concentrate the liquid at the bottom.
 5. Store the suspended plasmid at -20°C. The DNA is stable for at least one year from date of shipping when stored at -20°C.

RefSeq: [NM_006188.3](#), [NP_006179.2](#)

RefSeq Size: 588 bp

RefSeq ORF: 330 bp

Locus ID: 4951

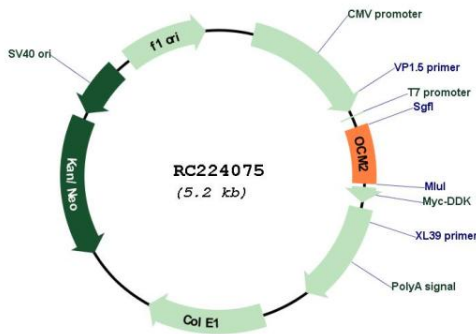
UniProt ID: [P0CE71](#)

Cytogenetics: 7q21.3

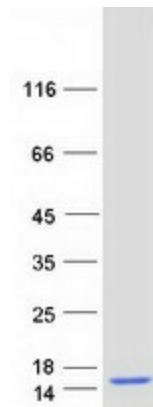
MW: 12.2 kDa

Gene Summary: This gene is similar to the oncomodulin gene, a high-affinity calcium ion-binding protein that belongs to the superfamily of calmodulin proteins, also known as the EF-hand proteins. [provided by RefSeq, Jul 2008]

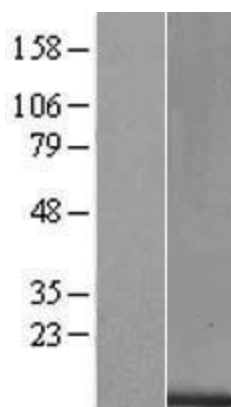
Product images:



Circular map for RC224075



Coomassie blue staining of purified OCM2 protein (Cat# [TP324075]). The protein was produced from HEK293T cells transfected with OCM2 cDNA clone (Cat# RC224075) using MegaTran 2.0 (Cat# [TT210002]).



Western blot validation of overexpression lysate (Cat# [LY416809]) using anti-DDK antibody (Cat# [TA50011-100]). Left: Cell lysates from untransfected HEK293T cells; Right: Cell lysates from HEK293T cells transfected with RC224075 using transfection reagent MegaTran 2.0 (Cat# [TT210002]).