

## Product datasheet for **RC224070**

### Lipin 2 (LPIN2) (NM\_014646) Human Tagged ORF Clone

#### Product data:

Product Type:	Expression Plasmids
Product Name:	Lipin 2 (LPIN2) (NM_014646) Human Tagged ORF Clone
Tag:	Myc-DDK
Symbol:	Lipin 2
Mammalian Cell Selection:	Neomycin
Vector:	pCMV6-Entry (PS100001)
E. coli Selection:	Kanamycin (25 ug/mL)



[View online »](#)

**ORF Nucleotide  
Sequence:**

>RC224070 representing NM\_014646  
 Red=Cloning site Blue=ORF Green=Tags(s)

TTTTGTAATACGACTCACTATAGGGCGGCCGGAATTCGTCGACTGGATCCGGTACCGAGGAGATCTGCC  
 GCC**CGGATCGCC**

ATGAATTATGTGGACAGCTGGCTGGGACAGGTGATTGTCACTGTGAAGGAAGCTCTACAAGGGCATTAAAC  
 AGGCCACCCTCTCTGGGTGCATTGATGTCATCGTGGTACAGCAGCAGGATGGCAGCTATCAGTGTTCAAC  
 TTTTCACGTTTCGGTTTGAAAGCTGGGAGTCTGAGATCCAAAGAGAAAGTGATTGATATAGAAATCAAC  
 GGCAGTGCAGTGGATCTTCACATGAAGTTGGGTGATAACGGAGAAGCTTTCTTTGTTGAGGAGACTGAAG  
 AAGAATATGAAAAGCTTCTGCTTACCTTGCCACCTACCAATTCCTACTGAAGATCAGTTCTTTAAAGA  
 TATTGACACCCCTTTGGTGAAATCGGGTGGAGATGAAACACCATCTCAGAGTTCAGACATCTCACACGTC  
 TTGAAACAGAGACAATTTTACTCCAAGTTCTGTGAAAAAGAAAAACGAAGGAGAAAGAAATACAAAC  
 AGGACAGTAAGAAGGAAGAGCAGGCCGATCTGCTGCTGCAGAAGACACATGTGATGTAGGCGTGAGCTC  
 CGATGATGACAAGGGGGCCAGGCAGCAGGAGTCTTCAAATGCTTCTTGAAGAAGAAGAATGTAA  
 GAGCCTTTGCTCTTCCATTCTGGGGATCATTACCCCTTATCTGATGGAGATTGGTCCCCTTTAGAGACCA  
 CCTATCCCGACAGCAGCTGTCCTAAGAGTGATTACAGAGCTGGAGGTGAAACCTGCGGAGAGCCTGCTCAG  
 ATCAGAGTCTCACATGGAGTGGACGTGGGGCGGATTCCAGAGTCCACCAAGGTGAGCAAAAGAGAACGA  
 TCTGACCATCATCTAGGACAGCTACAATTACACCATCAGAAAATACTCATTTTCGGGTAATTCACAGTG  
 AGGACAACCTCATCAGTGAAGTTGAGAAGGATGCTTCCATGGAAGACACTGTCTGTACCATAGTGAAGCC  
 CAAACCCAGAGCCCTGGGTACACAGATGAGCGACCCAACATCTGTGGCAGAGCTTCTCGAACCTCCTCTT  
 GAGAGTACTCAGATTTTCTATGTTAGATGCTGACCACCTTCCCAACGCAGCCTTAGCGGAGGCGCCCT  
 CAGAATCCAAACCGCAGCTAAAGTAGACTCGCCGTCAAAGAAGAAAGGTGTTCAAAAAGAACCAACA  
 CCAGGGACCTGATGATATTTACCTTGATGACTTAAAGGGTCTAGAACCTGAAGTTGCAGCTCTTTATTTTC  
 CCTAAAAGTGAATCGGAGCCCGTTCCAGGCAGTGGCCCGAGTCTGACACACTCTCTGGCTCCCAGTCCC  
 CACAGTCCGTGGGAAGCGCAGCTGCAGATAGCGGCACCGAGTGCCTCTCAGATTCTGCCATGGACTTGCC  
 TGACGTTACCCTCTCCCTTTGCGGGGCGCTCAGTGAAAATGGAGAAATTTCAAAGAAAAATTCATGGAG  
 CATATCATTACTTATCACGAATTTGCAGAAAACCTGGACTTATAGACAATCCTAACCTTGTAATAAGGA  
 TATATAATCGTTACTATAACTGGGCTTTGGCAGTCCCATGATCCTTAGCTTGAAGTATTCAGAGAAG  
 CTTGCCTAAGGCCACAGTTGAGTCTGGGTGAAAGACAAGATGCCAAAGAAATCTGGTCTGCTGGTGGTTT  
 TGGCGAAAGAGAGAAAGCATGACCAACAGCTGCCAGAATCCAAGGAGGAAAAATCTGAGGCACCGCCAG  
 CCAGTGACCTGCCATCCAGCTCCAAGGAGCCGGCCGGTGCCAGGCCGGCCGAGAATGACTCCTCGAGTGA  
 CGAGGGATCACAGGAGCTCGAAGAATCCATCACAGTGGACCCCATCCCCACAGAGCCCCTGAGCCACGGC  
 AGCACAACCTTCATATAAGAAGTCTCTCCGCCTCTCCTCAGACCAGATCGCAAACTGAAGTCCACGATG  
 GCCCAATGATGTTGTGTTTAGTATTACAACCCAGTATCAAGGCACCTGTGCTGTGCGAGGACCATTTA  
 CCTGTGGAAGTGAATGACAAGATCATTTCTGATATTGATGGGACAATAACCAAGTCGGATGCTTTG  
 GGACAGATTCTCCACAGCTGGGCAAAGACTGGACCCACCAGGTATAGCAAAGCTCTACCATTCATCA  
 ATGAGAATGGCTACAAGTTTCTGTACTGCTCGGCTCGTGCCATCGGCATGGCCGACATGACCCGTGGCTA  
 CCTGCACTGGGTCAATGACAAGGGCACAATCTTGCCCCGGGGCCCCCTGATGCTGTCCCCCAGCAGCTTG  
 TTCTCCGCCTTCCACAGAGAAGTGATAGAAAAGAAACCAGAGAAGTTCAAATTTGAGTGCTAAATGATA  
 TCAAGAATCTGTTTGCCCGTCTAAGCAGCCCTTCTATGCTGCCTTTGGAACCGTCCAAATGATGTCTA  
 TGCCTACACACAAGTTGGAGTTCAGACTGTAGAATATTCACCGTGAACCCCAAGGTGAATTAATACAA  
 GAAAGAACCAAGGAAACAAGTCATCGTATCACAGGCTGAGTGAGCTCGTGGAGCATGTGTTCCCTCTTC  
 TCAGTAAGGAGCAGAATCCGCTTTTCCCTGCCGGAGTTCAGCTCCTTCTGCTACTGGCAGACCCGAT  
 CCCTGAAGTGGACCTGGATGACCTGTCT

**ACGCGT**ACGCGGCCGCTCGAGCAGAACTCATCTCAGAAGAGGATCTGGCAGCAAATGATATCTGGATT  
 ACAAGGATGACGACGATAAGGTTTAA

Protein Sequence: >RC224070 representing NM\_014646  
 Red=Cloning site Green=Tags(s)

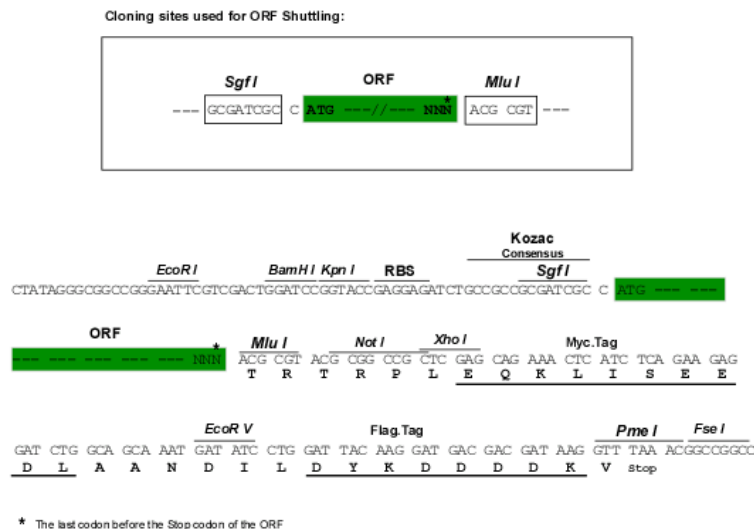
MNYVQG LAGQVIVTKELYKGINQATLSGCIDIVVQQDGSYQCSFHVRFGLGVLSKEKVIDIEIN  
 GSAVDLHMKLGDNGEAFVVEETEEYEKLPAYLATSPIPTEDQFFKDIDTPLVSGGDETPSQSSDISHV  
 LETETIFTPSSVKKKKRRRKYYKQDSKKEEQAASAAEDTCDVGVSSDDDKGAQAARGSSNASLKEECK  
 EPLLHSGDHYPLSDGDWSPLETTYPQTACPKSDSELEVKPAESLLRSESHMEWTWGGFPESTKVKRER  
 SDHHPRTATITPSENTHFRVIPSEDNLISEVEKDASMEDTVCTIVKPKRALGTQMSDPTSVAELLEPL  
 ESTQISSMLDADHLPNAALAEAPSESKPAKVDSPSKKKGVHKRSQHQQGPDIDYLLDLKGLEPEVAALYF  
 PKSESEPGSRQWPESDTLSGSQSPQSVGSAAADSGTECLSDSAMDLPDVTLSLGGGLSENGEISKEKFME  
 HIITYHEFAENPGLIDNPVLIRIYNRYNWALAAPMILSLQVFQKSLPKATVESWVKDKMPKSGRWWF  
 WRKRESMTKQLPESKEGKSEAPPASDLPSSEKAPAGARPAENDSSDEGSQELESITVDPIPTPLSHG  
 STTSYKSLRLSSDQIAKLKLDGPNVVFSTTQYQGTCTCAGTIYLNWWDKIIISDIDGTITKSDAL  
 GQILPQLGKDWTHQGIKLYHSINENGYKFLYCSARAIGMADMTRGYLHWVNDKGTILPRGPLMLSPSSL  
 FSAFHREVIEWEKPEKFKIECLNDIKNLFAPSKQPFYAAFGNRPNDVYAYTQVGVPCDRIFTVNPKGELIQ  
 ERTKGNKSSYHRLSELVEHVFPLLSKEQNSAFPCPEFSSFCYWRDPIPEVDLDDL

TRTRPLEQKLISEEDLAANDILDYKDDDDKV

Chromatograms: [https://cdn.origene.com/chromatograms/mg3135\\_d08.zip](https://cdn.origene.com/chromatograms/mg3135_d08.zip)

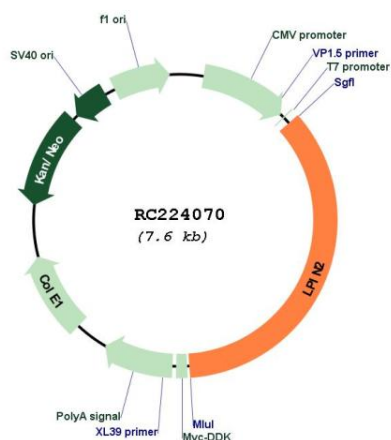
Restriction Sites: SgfI-MluI

Cloning Scheme:

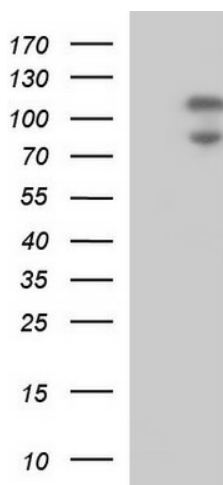


<b>ACCN:</b>	NM_014646
<b>ORF Size:</b>	2688 bp
<b>OTI Disclaimer:</b>	The molecular sequence of this clone aligns with the gene accession number as a point of reference only. However, individual transcript sequences of the same gene can differ through naturally occurring variations (e.g. polymorphisms), each with its own valid existence. This clone is substantially in agreement with the reference, but a complete review of all prevailing variants is recommended prior to use. <a href="#">More info</a>
<b>OTI Annotation:</b>	This clone was engineered to express the complete ORF with an expression tag. Expression varies depending on the nature of the gene.
<b>Components:</b>	The ORF clone is ion-exchange column purified and shipped in a 2D barcoded Matrix tube containing 10ug of transfection-ready, dried plasmid DNA (reconstitute with 100 ul of water).
<b>Reconstitution Method:</b>	<ol style="list-style-type: none"> <li>1. Centrifuge at 5,000xg for 5min.</li> <li>2. Carefully open the tube and add 100ul of sterile water to dissolve the DNA.</li> <li>3. Close the tube and incubate for 10 minutes at room temperature.</li> <li>4. Briefly vortex the tube and then do a quick spin (less than 5000xg) to concentrate the liquid at the bottom.</li> <li>5. Store the suspended plasmid at -20°C. The DNA is stable for at least one year from date of shipping when stored at -20°C.</li> </ol>
<b>RefSeq:</b>	<a href="#">NM_014646.2</a> , <a href="#">NP_055461.1</a>
<b>RefSeq Size:</b>	6245 bp
<b>RefSeq ORF:</b>	2691 bp
<b>Locus ID:</b>	9663
<b>UniProt ID:</b>	<a href="#">Q92539</a>
<b>Cytogenetics:</b>	18p11.31
<b>Domains:</b>	lipin_N
<b>MW:</b>	99.2 kDa
<b>Gene Summary:</b>	Mouse studies suggest that this gene functions during normal adipose tissue development and may play a role in human triglyceride metabolism. This gene represents a candidate gene for human lipodystrophy, characterized by loss of body fat, fatty liver, hypertriglyceridemia, and insulin resistance. [provided by RefSeq, Jul 2008]

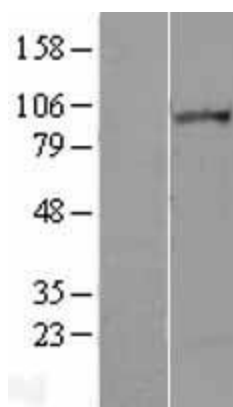
## Product images:



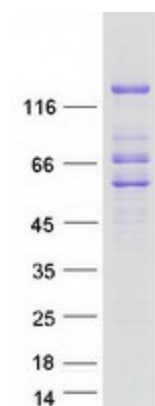
Circular map for RC224070



HEK293T cells were transfected with the pCMV6-ENTRY control (Cat# [PS100001], Left lane) or pCMV6-ENTRY LPIN2 (Cat# RC224070, Right lane) cDNA for 48 hrs and lysed. Equivalent amounts of cell lysates (5 ug per lane) were separated by SDS-PAGE and immunoblotted with anti-LPIN2 (Cat# [TA590249]). Positive lysates [LY402358] (100ug) and [LC402358] (20ug) can be purchased separately from OriGene.



Western blot validation of overexpression lysate (Cat# [LY402358]) using anti-DDK antibody (Cat# [TA50011-100]). Left: Cell lysates from untransfected HEK293T cells; Right: Cell lysates from HEK293T cells transfected with RC224070 using transfection reagent MegaTran 2.0 (Cat# [TT210002]).



Coomassie blue staining of purified LPIN2 protein (Cat# [TP324070]). The protein was produced from HEK293T cells transfected with LPIN2 cDNA clone (Cat# RC224070) using MegaTran 2.0 (Cat# [TT210002]).