

Product datasheet for **RC224059**

SEZ6L2 (NM_012410) Human Tagged ORF Clone

Product data:

Product Type:	Expression Plasmids
Product Name:	SEZ6L2 (NM_012410) Human Tagged ORF Clone
Tag:	Myc-DDK
Symbol:	SEZ6L2
Synonyms:	BSRPA; PSK-1
Mammalian Cell Selection:	Neomycin
Vector:	pCMV6-Entry (PS100001)
E. coli Selection:	Kanamycin (25 ug/mL)



[View online »](#)

ORF Nucleotide Sequence:

>RC224059 representing NM_012410
 Red=Cloning site Blue=ORF Green=Tags(s)

TTTTGTAATACGACTCACTATAGGGCGGCCGGGAATTCGTCGACTGGATCCGGTACCGAGGAGATCTGCC
 GCC**CGATCGCC**

ATGGGGACTCCCAGGGCCAGCACCCGCCGCTCCCCAGCTGCTGTTCTAATTCTGCTGAGCTGTCCCT
 GGATCCAGGGTCTGCCCCGAAGGAGGAGGAGATATTGCCAGAGCCTGGAAGTGAGACCCACCGTGGC
 CTCTGAGGCCCTGGCTGAACTGCTTCATGGGGCCCTGCTGAGGAGGGGCCAGAGATGGGCTACCTGCCA
 GGGCTCCCCTTGGGCTGAGGGAGGAGAGGAGAGACGACGACCACCATCATCACCACGACAACCTGTTA
 CCACTACGGTGACCAGCCAGTTCTGTGTAATAACAACATCTCCGAGGGCGAAGGGTATGTGGAGTCTCC
 AGATCTGGGGAGCCCCGTAGCCGACCCTGGGGCTCTGGACTGCATTACAGCATCCATGTCTACCTT
 GGCTACGGCATTGAGATCCAGGTGCAGACGCTGAACCTGTACAGGAAGAGGAGCTCTGGTGTGGCTG
 GTGGGGGATCCCAGGCCTGGCCCCGACTCCTGGCCAACTCATCCATGCTTGAGAAGGACAAGTCTCT
 TCGGAGCCCAACCAACCGGCTGCTTCTGCACTTCCAGAGCCACGGGTCCAAGGGCGGTGGCTTCAAG
 ATCCACTATCAGGCCTACCTCCTGAGCTGTGGTTCCTCCCCGGCCGGCCCATGGGGACGTGAGTGTGA
 CGGACCTGCACCTGGGGCACTGCCACCTTCTACTGTGATTCGGGCTACCAGCTGCAGGGAGAGGAGAC
 CCTCATCTGCCTCAATGGCACCCGGCCATCCTGGAACGGTGAACCCCCAGCTGCATGGCATCCTGTGGT
 GGCAACATCCACAATGCCACCCTGGGCCGATCGTGTCCCAGAGCCTGGGGGAGCCGTAGGGCCCAACC
 TCACCTGCCGTTGGGTCAATTGAAGCAGCTGAGGGGCGCCGGTGCACCTGCATTGAAAGGGTCTCGT
 GGATGAGGACAATGACCGGCTGATGGTGCCTCAGGGGCGAGCCCCATCCCCGATCTATGATTGCG
 AGATGGACGATGTCCCAGCGGGTCTCATCAGTGACGCCAGTCCCTCTACGTGGAGTCTGCTTCCGCCC
 AGACACTGCCAATCCCCTGCTGTTAAGCCTTCGATTTGAAGCCTTTGAGGAGGATCGCTTCCGCCC
 TTCCTGGCACATGGAATGTCACTACCACGGACCCTGAGTATCGCCAGGGGCACTGGCAACCTTCTCG
 TGCTCCAGGATATGCCTGGAGCCCCCTGGGCCCCCAATGCCATCGAATGTGTGGATCCCACAGAAC
 CCCACTGGAACGACACAGAGCCGGCCTGCAAGCCATGTGTGGAGGGGAGCTGTCGGAACAGCTGGCGT
 GGTCTCTCTCCGACTGGCCCCAGAGCTATAGCCGGGCAAGACTGCGTGTGGGGCGTGCACGTCCAG
 GAAGAGAAGCGCATCTTGCTCCAAGTTGAGATATTGAATGTGCGGGAAGGGGACATGCTGACGCTGTTG
 ACGGGGACGTCACAGCAGCCGAGTCTTGCCAGCTGCGGGGACCTCAGCCGCGCCGCCCTTCTCTC
 CTCTGGGCCCAGCTCACACTGCAGTTTACGGCACCGCCGGGCCCAATCCAGGCTGGGCCAGGGC
 TTCGATTTGCACTTCAAAGAGTCCCGAGGAACGACACGTGCCCGAGCTGCCACCTCCGGAGTGGGGCT
 GGAGAACGGCATCCCACGGGACCTGATCCGGGGCACGGTGTACCTACCAGTGCAGGCTGGCTACGA
 GCTGTAGGCTCCGACATTTCACTTGCCAGTGGGACCTGTCTTGAGCGCCGCGCCGCCCTGCCAA
 AAGATCATGACTTGTGCTGACCCTGGCGAGATTGCCAACGGGCACCGCACCGCTCGGACGCCGGTTC
 CCGTTGGCTCCCAGTCCAGTACCGTGCCTGCCAGGGTACAGCTCGAGGGGGCAGCATGCTCACCTG
 CTACAGCCGGGACACAGGCACACCAAGTGGAGCGATAGGGTCCCCAAATGCGCCTTGAAGTACGAGCCG
 TGCTGAACCCGGGGTCCCAGAAATGGCTACCAGACGCTGTACAAGCACCACTACCAGGCGGGCGAGT
 CTCTGCGCTTCTTCTGCTATGAGGGCTTTGAGCTTATCGGCGAGGTACCATCACCTGTGTGCCCGGCA
 CCCCTCCAGTGGACCAGCCAGCCCCACTCTGCAAAGTTGCCTATGAGGAGCTCCTGGACAACCCGAAA
 CTGGAAGTGACCCAGACCAGATCCATCACGGCAGCTGGAAGGGGGAACTGGCCCTGGCCATCCTGTC
 TGCTCTAGGCTTGGTCAATTGTCTCGGAGTGGCGTTTACATCTACTACCAAGCTTACAGGAAAGTC
 CCTTTTCGGCTTCTCGGCTCCACTCCTACAGCCCCATCACCGTGGAGTGGACTTCAGCAACCCGCTG
 TATGAAGCTGGGATACGCGGGAGTATGAAGTTTCCATC

ACGCGTACGCGGGCGCTCGAGCAGAACTCATCTCAGAAGAGGATCTGGCAGCAATGATATCCTGGATT
 ACAAGGATGACGACGATAAGGTTTAA

Protein Sequence: >RC224059 representing NM_012410
 Red=Cloning site Green=Tags(s)

```

MGTPRAQHPPPPQLFLILLSCPWIQGLPLKEEELPEPGSETPTVASEALAEELLHGALLRRGPEMGYLP
GPPLGPEGEEETTTTIIITTTTITTTVTSPVLCNNNISEGEGYVESPDLGSPVSRTLGLLDCTYSIHVYP
GYGIEIQVQTLNLSQEEELLVLAGGSGPLAPRLLANSSMLGEGQVLRSPNRLLLHFQSPRVPRGGGFR
IHYQAYLLSCGFPPRPAHGDVSVTDLHPGGTATFHCDSGYQLQGEETLICLNGTRPSWNGETPSCMASCG
GNIHNATLGRIVSPEPGGAVGNLTCRWVIEAAEGRRLHLHFERSLDEDNDRLMVRSGGSPLSPVIYDS
DMDDVPERGLISDAQSLYVELLSETPANLLLLSLRFEAFEEDRCFAPFLAHGNVTTTDPYRPGALATFS
CLPGYALEPPGPPNAIECVDPTEPHWNDTEPACKAMCGGELSEPAGVVLSPDWPQSYSPGQDCVWGVHVQ
EEKRILLQVEILNVREGDMLTLFDGDGPSARVLAQLRGPQPRRLLSSGPDLTQFQAPPGPPNPLGQG
FVLHFKEVPRNDTCPELPPPEWGWRTASHGDLIRGTVLTYQCEPGYELLGSDILTCQWDLWSAAPPACQ
KIMTCADPGEIANGHRTASDAGFPVGSVQYRCLPGYSLEGAAMLTCYSRDTGTPKWSDRVPKALKYEP
CLNPGVPENGYQTLYKHYYQAGESLRFCEYEGFELIGEVTITCVPGHPSQWTSQPPLCKVAYEELLNDRK
LEVTQTTDPSRQLEGGNLALAILLPLGLVIVLGSVYIYYTKLQKSLFGFSGSHSYSPITVESDFSNPL
YEAGDTREYEVSI
  
```

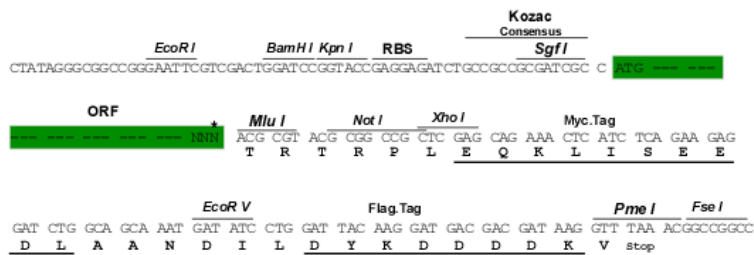
TRTRPLEQKLISEEDLAANDILDYKDDDDKV

Chromatograms: https://cdn.origene.com/chromatograms/mg4181_h05.zip

Restriction Sites: SgfI-MluI

Cloning Scheme:

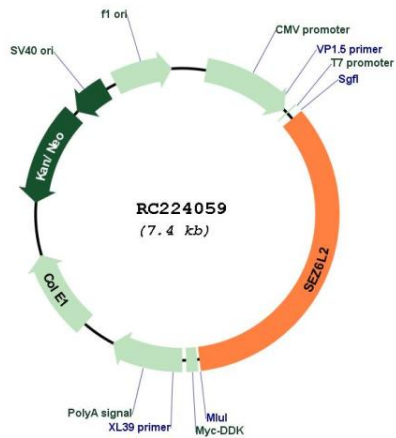
Cloning sites used for ORF Shuttling:



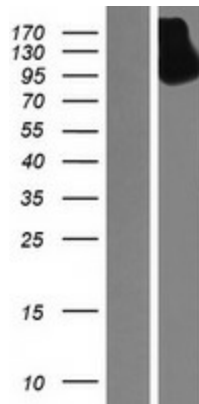
* The last codon before the Stop codon of the ORF

ACCN:	NM_012410
ORF Size:	2559 bp
OTI Disclaimer:	The molecular sequence of this clone aligns with the gene accession number as a point of reference only. However, individual transcript sequences of the same gene can differ through naturally occurring variations (e.g. polymorphisms), each with its own valid existence. This clone is substantially in agreement with the reference, but a complete review of all prevailing variants is recommended prior to use. More info
OTI Annotation:	This clone was engineered to express the complete ORF with an expression tag. Expression varies depending on the nature of the gene.
Components:	The ORF clone is ion-exchange column purified and shipped in a 2D barcoded Matrix tube containing 10ug of transfection-ready, dried plasmid DNA (reconstitute with 100 ul of water).
Reconstitution Method:	<ol style="list-style-type: none">1. Centrifuge at 5,000xg for 5min.2. Carefully open the tube and add 100ul of sterile water to dissolve the DNA.3. Close the tube and incubate for 10 minutes at room temperature.4. Briefly vortex the tube and then do a quick spin (less than 5000xg) to concentrate the liquid at the bottom.5. Store the suspended plasmid at -20°C. The DNA is stable for at least one year from date of shipping when stored at -20°C.
RefSeq:	NM_012410.4
RefSeq Size:	2855 bp
RefSeq ORF:	2562 bp
Locus ID:	26470
UniProt ID:	Q6UXD5
Cytogenetics:	16p11.2
Protein Families:	Druggable Genome, Transmembrane
MW:	92.3 kDa
Gene Summary:	This gene encodes a seizure-related protein that is localized on the cell surface. The gene is located in a region of chromosome 16p11.2 that is thought to contain candidate genes for autism spectrum disorders (ASD), though there is no evidence directly implicating this gene in ASD. Increased expression of this gene has been found in lung cancers, and the protein is therefore considered to be a novel prognostic marker for lung cancer. Alternative splicing of this gene results in multiple transcript variants. [provided by RefSeq, Aug 2011]

Product images:



Circular map for RC224059



Western blot validation of overexpression lysate (Cat# [LY415788]) using anti-DDK antibody (Cat# [TA50011-100]). Left: Cell lysates from untransfected HEK293T cells; Right: Cell lysates from HEK293T cells transfected with RC224059 using transfection reagent MegaTran 2.0 (Cat# [TT210002]).