

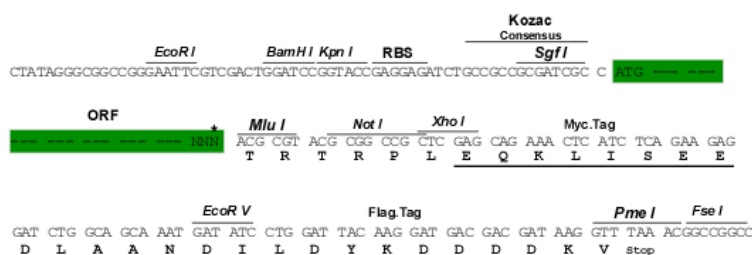
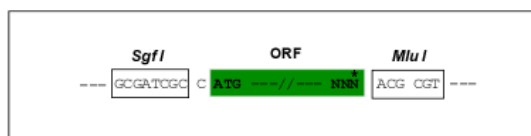
## Product datasheet for RC224051

### TMS1 (PYCARD) (NM\_145182) Human Tagged ORF Clone

#### Product data:

Product Type:	Expression Plasmids
Product Name:	TMS1 (PYCARD) (NM_145182) Human Tagged ORF Clone
Tag:	Myc-DDK
Symbol:	TMS1
Synonyms:	ASC; CARD5; TMS; TMS-1; TMS1
Mammalian Cell Selection:	Neomycin
Vector:	pCMV6-Entry (PS100001)
E. coli Selection:	Kanamycin (25 ug/mL)
Restriction Sites:	SgfI-MluI
Cloning Scheme:	

Cloning sites used for ORF Shuttling:



\* The last codon before the Stop codon of the ORF

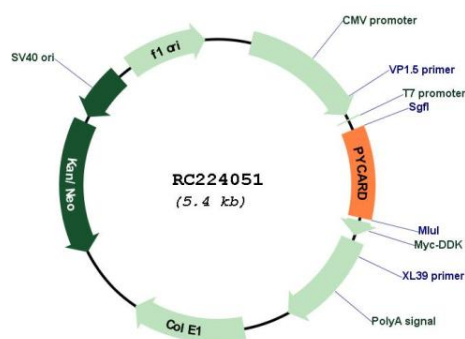
ACCN:	NM_145182
ORF Size:	528 bp



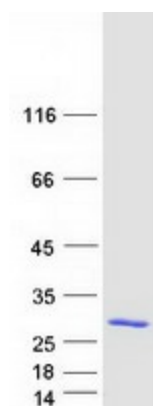
[View online »](#)

<b>OTI Disclaimer:</b>	The molecular sequence of this clone aligns with the gene accession number as a point of reference only. However, individual transcript sequences of the same gene can differ through naturally occurring variations (e.g. polymorphisms), each with its own valid existence. This clone is substantially in agreement with the reference, but a complete review of all prevailing variants is recommended prior to use. <a href="#">More info</a>
<b>OTI Annotation:</b>	This clone was engineered to express the complete ORF with an expression tag. Expression varies depending on the nature of the gene.
<b>Components:</b>	The ORF clone is ion-exchange column purified and shipped in a 2D barcoded Matrix tube containing 10ug of transfection-ready, dried plasmid DNA (reconstitute with 100 ul of water).
<b>Reconstitution Method:</b>	<ol style="list-style-type: none"> <li>1. Centrifuge at 5,000xg for 5min.</li> <li>2. Carefully open the tube and add 100ul of sterile water to dissolve the DNA.</li> <li>3. Close the tube and incubate for 10 minutes at room temperature.</li> <li>4. Briefly vortex the tube and then do a quick spin (less than 5000xg) to concentrate the liquid at the bottom.</li> <li>5. Store the suspended plasmid at -20°C. The DNA is stable for at least one year from date of shipping when stored at -20°C.</li> </ol>
<b>Note:</b>	Plasmids are not sterile. For experiments where strict sterility is required, filtration with 0.22um filter is required.
<b>RefSeq:</b>	<a href="#">NM_145182.2</a> , <a href="#">NP_660183.1</a>
<b>RefSeq Size:</b>	725 bp
<b>RefSeq ORF:</b>	531 bp
<b>Locus ID:</b>	29108
<b>UniProt ID:</b>	<a href="#">Q9ULZ3</a>
<b>Cytogenetics:</b>	16p11.2
<b>Domains:</b>	PAAD_DAPIN
<b>Protein Families:</b>	Druggable Genome
<b>Protein Pathways:</b>	Cytosolic DNA-sensing pathway, NOD-like receptor signaling pathway
<b>MW:</b>	20 kDa
<b>Gene Summary:</b>	This gene encodes an adaptor protein that is composed of two protein-protein interaction domains: a N-terminal PYRIN-PAAD-DAPIN domain (PYD) and a C-terminal caspase-recruitment domain (CARD). The PYD and CARD domains are members of the six-helix bundle death domain-fold superfamily that mediates assembly of large signaling complexes in the inflammatory and apoptotic signaling pathways via the activation of caspase. In normal cells, this protein is localized to the cytoplasm; however, in cells undergoing apoptosis, it forms ball-like aggregates near the nuclear periphery. Two transcript variants encoding different isoforms have been found for this gene. [provided by RefSeq, Jul 2008]

## Product images:



Circular map for RC224051



Coomassie blue staining of purified PYCARD protein (Cat# [TP324051]). The protein was produced from HEK293T cells transfected with PYCARD cDNA clone (Cat# RC224051) using MegaTran 2.0 (Cat# [TT210002]).