

## Product datasheet for RC224050

### Tensin 1 (TNS1) (NM\_022648) Human Tagged ORF Clone

#### Product data:

Product Type:	Expression Plasmids
Product Name:	Tensin 1 (TNS1) (NM_022648) Human Tagged ORF Clone
Tag:	Myc-DDK
Symbol:	Tensin 1
Synonyms:	MST091; MST122; MST127; MSTP091; MSTP122; MSTP127; MXRA6; PPP1R155; TNS
Mammalian Cell Selection:	Neomycin
Vector:	pCMV6-Entry (PS100001)
E. coli Selection:	Kanamycin (25 ug/mL)
ORF Nucleotide Sequence:	>RC224050 representing NM_022648 Red=Cloning site Blue=ORF Green=Tags(s)

TTTTGTAATACGACTCACTATAGGGCGGCCGGAATTCGTCGACTGGATCCGGTACCGAGGAGATCTGCC  
GCC**CGATCGCC**

ATGAGTGTGAGCCGACCATGGAGGACAGCTGTGAGCTGGACCTGGTGTACGTACAGAGAGGATCATCG  
CTGTCTCCTTCCCAGCACAGCCAATGAGGAGAACTTCCGGAGCAACCTCCGTGAGGTGGCGCAGATGCT  
CAAGTCCAACATGGAGGCAACTACCTGCTGTTCAACCTCTCTGAGCGGAGACCTGACATCAGGAAGCTC  
CATGCCAAGTACTGGAATTTGGCTGGCCGACCTCCACACCCAGCCCTGGAGAAGATCTGCAGCATCT  
GTAAGGCCATGGACACATGGCTCAATGCAGACCCTCACAATGTCGTTGTTCTACACAACAAGGGAAACCG  
AGGCAGGATAGGAGTTGTATCGCGGCTTACATGCACTACAGCAACATTTCTGCCAGTGGCAGCCAGGCT  
CTGGACCGGTTTGAATGAAGCGGTTCTATGAGGATAAGATTGTGCCATTGGCCAGCCATCCCAAAGAA  
GGTACGTGCATTACTTCACTGGCCTGCTCTCCGGCTCCATCAAAATGAACAACAAGCCCTTGTCTGCA  
CCACGTGATCATGCACGGCATCCCAACTTTGAGTCTAAAGGAGGATGTCGGCCATTTCTCCGCATCTAC  
CAGGCCATGCAACCTGTGTACACATCTGGCATCTACAACATCCCAGGAGACAGCCAGACTAGCGTCTGCA  
TCACCATCGAGCCAGGACTGCTCTTGAAGGGAGACATCTTGTGAAGTGTACCACAAGAAGTCCGAAG  
CCCAGCCCGAGACGTCACTTCCGTGTGCACTTCCACACCTGTGCCATCCATGACCTGGGGTTGTCTTT  
GGGAAGGAGGACCTTGATGATGCTTTCAAAGATGATCGATTTCCAGAGTATGGCAAAGTGGAGTTTGTAT  
TTTCTTATGGCCAGAGAAAATTCAGGCATGGAGCACCTGGAGAACGGGCCGAGCGTGTCTGTGGACTA  
TAACACCTCCGACCCCTCATCCGCTGGGACTCCTACGACAACCTCAGTGGGCATCGAGATGACGGCATG  
GAGGAGGTGGTGGGACACACGCAGGGGCCACTAGATGGGAGCCTGTATGCTAAGGTGAAGAAGAAAGACT  
CCCTGCACGGCAGCACCGGGGCTGTTAATGCCACACGTCCTACACTGTCGGCCACCCCAACCACGTGGA  
ACACACGCTTTCTGTGAGCAGCGACTCGGGCAACTCCACAGCCTCCACCAAGACCACAAGACCACGAG  
CCTGTCCCGGGGCTCCAGTGCCTGCTGCCTTGAGTCCCAGGAGAAGCGGGAGCTGGACCGCTGC  
TGAGTGGCTTTGGCTTAGAGCGAGAGAAGCAAGGCCATGTACCACCCAGCACCTCAGTCCCAGCC  
AGCAGGGGCTCGCTGTGCCCTCTTGACGCCACGTTGTCCCAGCCAGGTTTCATGTCAATGGTGGG



[View online »](#)

GCGTTAGCATCTGAGCGGGAGACAGACATCCTGGACGATGAATTGCCAAACCAGGATGGTCACAGTGCGG  
 GCAGCATGGGCACACTCTTCTCTGGACGGGGTACCAACACCAGTGAAGGGGGCTACCCAGAGGCCCT  
 GTCCCCACTGACCAACGGTCTGGACAAGTCTACCCCATGGAGCCTATGGTCAATGGAGGAGGCTACCCC  
 TACGAGTCTGCCAGCCGGGCGGGGCTGCCATGCTGGCCACACGGCCCCATGCGGGCCCTCTACTCTG  
 CACAGGAGGGTTAGCTGGTACCAGAGGGAGGGGCCACCCAGCCTGGCCACAGCCAGTGACCACCTC  
 CCACTATGCCATGACCCAGCGGTATGTTCCGCTCTCAATCCTTTTCGGAAGCTGAACCCAGCTGCC  
 CCAGTCCGGTCCGAGGGGAAGCAGCCGGGAGGCTGTGCAAAGGGGACTGAATTCGTGGCAGCAGCAGC  
 AGCAGCAGCAGCAGCAGCCTCGCCACCTCCACGCCAGCAGGAAAGAGCCCACTTGGAGAGTCTTGTAGC  
 CAGCAGGCCAGCCCTCAGCCATTGGCAGAGACCCCATCCCCAGTCTCCCTGAGTTCGCCGAGCAGCC  
 TCCCAGCAGGAGATTGAACAGTCCATCGAAACTCAATATGCTGATGCTGGACCTGGAGCCAGCCTCCG  
 CTGCTGCCCACTACACAAGTCCAGAGTGTCCCCGGGGCTGGCCAGGGGCTTCTCCACTCTCTCCCA  
 GCCCTCTCTGGATCCTCCCGTCACTCCACTGACCCAGTCCAGATCTGGCTATATCCCCAGTGGG  
 CATTCTGTGGGAACCCCTGAGCCAGCCACGGGCTCTCTGGAGTCTGTCCCTCTGGCAGGTCTTACT  
 CACCTTATGACTATCAGCCATGTTTGGTGGGCTAACCCAGGATTTCCATTCAAAGAGCCAGCCTCTC  
 CTCCTTGCTGCCTTCTCCGACCACCCAGCCCTCCAGGGCCTCAGCAACCCAGCCTCTCTCCCT  
 GGCTCAGTCTGCTCAGCCTCTGCTCTACCAAAGGAAGCGACTTCAGACCCCTCCCGGACTCCAGAGGAGG  
 AGCCATTGAATTTAGAAGGGCTGGTGGCCACAGGGTAGCAGGGGTACAGGCTCGGGAGAAGCAGCCTGC  
 AGAGCCCCAGCCCTCTGCGGAGGCGGGCGGCCAGTGTGGACAGTATGAGAACCAGTCTCCAGAAGCC  
 ACATCCCTCGTAGCCCTGGGGTTCGCTCCCCTGTCCAGTGTGTCTCCCGGAGCTGGCTTTACCATCG  
 CTCTCAATCCTGGAGGGCGGCCAAAGAGCCCCATTTGCACAGCTACAAGGAGGCCTTCGAGGAGATGGA  
 GGGAACTCCCGAGCAGCCACCACCCAGTGGGTGCGGTCCCCCGGGTCTGGCCAAGACCCCTG  
 TCTGCTGGGCTGAAACCTCACAAACCAGCGGACATCTGTTGACCCACAGGAGTTACCAGAAGAG  
 GGATCCAGCCAGAGGAAGATGAGGGGAAGTGGTGGTCAAGGAGTGTGAGAAGAGCCCGGAGTATGTGGA  
 GTCTGTGGCAGCGACAGCGGTGGCTGGACCCGAGCTCAGGACTCTGAGCCAAAGAGCTTATGTGCTCCA  
 GCCACCCAGCCCTATGGCCATGAGATACCCTGAGGAACGGGACCCCTGGGTGGCTCTTTGTCTCCCCCA  
 GCCCTCTCCACCAGCAGCCCATCCTCAGTGTGACAGCACTTCAGTGGGAGTTCGCGTGGGAGA  
 GAGCAGTGACCAGGGTCCCGGACGCCACCCAGCCTCTGTTGGAGTCTGGCTTCGCTCAGGCAGCCTG  
 GGACAGCCAGCCGCTGCCCAGAGAACTACCAGAGCTTCTCTCTCCCGACTGTGGGAGTGTAGCT  
 ACAGCAGCCCGACTACTCACTCAGCATTTCAGCTCCTCTCCGAAAGCCAGGCTCGAGCTCAGTTCAG  
 TGTGGTGGCGTCCACACGGTGCCTGGGAGCCCTCAGGCGGCCACAGAAGTGGGACCAACACTCCC  
 CCTAGTCTGGCTTCGGTGGCGGCCATCAATCCAGCATGGCTGCCCCAGCAGTCCCAGTTGAGCC  
 ATCACCAGATGATGGGTCCACCAGGCAGTGGCTTCCATGGTAGCACTGTCTCCAGCCCCAGAGCAGTGC  
 AGCGACACCCCGGGGAGCCCGCCTGTGTGGCACCCAGCAGGGGTCTACCAGTTTCTGGCCTCCAC  
 AACAAAGTGGCCACCACCCCGGGGAGTCCAGCCTGGGCCGACCCCTGGGGCTACCAAGGCAACCTGG  
 CCTCCGGTCTTATAGCAATGCAATAGCCAGCCCTGGAAGCCCCAGCCTGGGCCGTACCTCGGAGGGTC  
 TGGATCTGTGGTTCGCGCAGCCCTGTTGGACCGCATGTGGCCTATGGTGGCTATTCTACCCCGGAG  
 GATCGGAGACCCACTGTCCCGCAGAGCAGTGCCTCTGGCTACCAGGCTCCTCCACGCCCTCCTTCC  
 CTGTCTCCCTGCCTACTACCTGGCCTGAGCAGCCTGCCACCTCCCGTCCAGACTCCGAGCCTCCGAGCCT  
 CCGGCAAGGGAGCCCAACACCAGCCTTCCAGAGAAGCGAAGGATGTAGTGGGAGACCGGGCAGGCAGC  
 CTCCCCAACTATGCCACCATCAATGGGAAGGTGTCTTCGCTGTGCCAGCGGCATGTCCAGTCCCAGTG  
 GGGCAGCACCCTCCTTCTCCACACTCTGCCGACTTCTCCAAGTACTCCATGCCAGACAACAGCCC  
 GGAGACGCGGGCTAAAGTGAAGTTGTCCAGGACACTTCTAAGTATTGGTACAAGCCTGAGATCTCCAGG  
 GAGCAGGCCATCGCGCTCCTCAAGGACCAGGAGCCGGGGCTTCCATCATCCGCGACAGTCACTCCTTCC  
 GAGGCGGTACGGGCTGGCCATGAAGGTGTCTTCGCCACCTCCAACCATCATGCAGCAGAATAAAAAAGG  
 AGACATGACCCATGAGCTGGTCAAGCATTTTCTGATAGAGACTGGCCCCAGAGGAGTCAAGCTCAAGGGC  
 TGCCCCAATGAGCCAACTTCGGATCGCTGTCTGCCCTGGTCTACCAGCACTCCATCATCCCATTTGGCC  
 TGCTTGAAGCTGGTCAATTCAAACCGAGACCCACAGATGAATCGAAAGATAGCTCCGGCCCTGCCAA  
 CTAACCTGCAGACCTGTGAAACAAGGGGAGCCTGCAATGTGCTCTTCTGCAACTCTGTGGACATGGAG  
 TCACTCACTGGGCCACAGGCCATCTCTAAAGCCACATCTGAGACGTTGGTGCAGACCCACGCCAGCTG  
 CCACCATCGTTCACTTCAAAGTCTCTGCCAGGGAATCACTCTGACTGACAACCAGAGAAAGCTCTTTTT  
 CAGACGCCACTACCTCTCAACTGTACCTTCTGTGACCTGGATCCACAGGAAAGAAAGTGGATGAAA  
 ACAGAGGGTGGTCCCTGCTAAGCTCTTCGGCTTCGTGGCCCGAAGCAGGGCAGCACCACGGACAACG

CCTGCCACCTCTTTGCTGAGCTTGACCCCAACCAGCCGGCCTCTGCCATCGTCAACTTCGTCTCCAAGGT  
CATGCTGAATGCCGGCCAAAAGAGA

ACGCGTACGCGGGCCGCTCGAGCAGAACTCATCTCAGAAGAGGATCTGGCAGCAAATGATATCCTGGATT  
ACAAGGATGACGACGATAAGGTTTAA

**Protein Sequence:**

>RC224050 representing NM\_022648  
Red=Cloning site Green=Tags(s)

MSVSRTMEDSCELDLVYVTERIIAVSFPSTANEENFRSNLREVAQMLKSKHGGNYLLFNLSERRPDITKL  
HAKVLEFGWPDHLTPALEKICSIKAMDTWLNADPHNVVVLHNGNRGRIGVVIAYMYHSNISASADQA  
LDRFAMKRFYEDKIVPIGQPSQRRYVHYFSGLLSGSIKMNKPLFLHHVIMHGIPNFESKGGCRPFLRIY  
QAMQPVYTSGIYNIPGDSQTSVCITIEPGLLLKGDILLKCYHKKFRSPARDVIFRVQFHTCAIHDLGVVF  
GKEDLDDAFKDDRFPEYKVEFVFSYGPEKIQGMEHLENGPSVSDYNTSDPLIRWDSYDNFSGHRDDGM  
EEVVGHGTQGPLDGLSYAKVKKDSLHGSTGAVNATRPPLSATPNHVEHTLSVSSDSGNSTASTKTDKDE  
PYPGASSATAALSPQEKRELDRLLSGFLEREKQGAMYHTQHLRSRPAAGGSAVPSSSGRHVVPAQVHVNGG  
ALASERETDILDDELPNQDGHASGSMGTLSSLDGVTNTSEGGYPEALSPLTNGLDKSYMEPMVNGGGYP  
YESASRAGPAHAGHTAPMRPSYSAQEGLAGYQREGPHAWPQPVTTSHYAHDPSGMFRSQSFSEAEPQLP  
PAPVRGGSSREAVQRGLNSWQQQQQQPPPPRQERAHLESLVASRSPQPLAETPIPSPLEFPRAA  
SQQEIEQSIETLNMLMLDLEPASAAPLHKSQSVPGAWPGASPLSSQPLSGSSRQSHPLTQSRSGYIPSG  
HSLGTPEPAPRASLESVPPGRSYSPYDYPCLAGPNQDFHKSPPASSSLPAFLPTTHSPPGPQPPASLP  
GLTAQPLLSPKEATSDPSRTPEEEPLNLEGLVAHRVAGVQAREKQPAEPPAPLRRRAASDGGQYENQSPEA  
TSPRSPGVRSPVQCVSPELALTIALNPGGRPKEPHLSYKEAFEEMEGTSPSSPPPSGVRSPPLAKTPL  
SALGLKPHNPADILLHPTGVTRRIIQPEEDEGKVVVRLSEEPSYVESVARTAVAGPRAQDSEPKSFSAP  
ATQAYGHEIPLRNGTLGGSFVSPSPLSTSSPILSADSTSVGSFSPGESSDQGPRTPTQPLLESGFRSGSL  
GQPSPSAQRNYQSSSPLPTVGSSYSSPDYSLQHFSSSPESQARAQFSVAGVHTVPGSPQARHRTVTNTPT  
PSPGFWRAINPMAAPSSPSLSHHQMMPGPGTFHGSTVSSPQSSAATTPGSPSLCRHPAGVYQVSGLH  
NKVATTPGSPSLGRHPGAHQGNLASGLHSNAIASPGSPSLGRHLGGSGSVVPGSPCLDRHVAYGGYSTPE  
DRRPTLSRQSSASGYQAPSTPSFPVSPAYYPGLSSPATSPSPDAAFRQGSPTPALPEKRRMSVGDRA  
LPNYATINGKVSSPVASGMSSPSGSGSTVSFSHTLPDFSKYSMPDNSPETRAKVKFVQDTSKYWYKPEISR  
EQAIALLKDQEPGAFIIRDSHSFRGAYGLAMKVSSPPPTIMQONKKGDMTHELVRHFLIETGPRGVKLG  
CPNEPNFGSLSALVYQHSIIPALPCKLVIPNRDPTDESKDSSGPANSTADLLKQGAACNVLFVNSVDME  
SLTGPQAIKATSETLAADPTPAATIVHFKVSAQGITLTDNQRKLFRRHYPLNTVTFCDLDPQERKWMK  
TEGGAPAKLFGFVARKQGSTTDNACHLFAELDPNQPASAIVNFVSKVMLNAGQKR

TRTRPLEQKLISEEDLAANDILDYKDDDDKV

**Chromatograms:**

[https://cdn.origene.com/chromatograms/mk8044\\_d08.zip](https://cdn.origene.com/chromatograms/mk8044_d08.zip)

**Restriction Sites:**

Sgfl-MluI

Cloning Scheme:



ACCN: NM\_022648

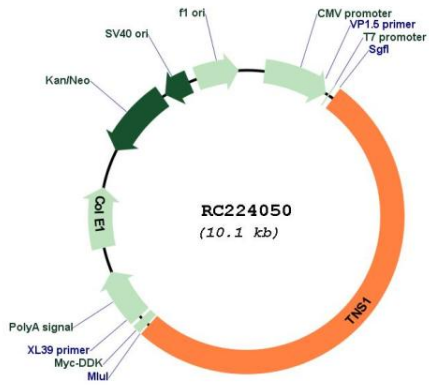
ORF Size: 5205 bp

OTI Disclaimer: Due to the inherent nature of this plasmid, standard methods to replicate additional amounts of DNA in E. coli are highly likely to result in mutations and/or rearrangements. Therefore, OriGene does not guarantee the capability to replicate this plasmid DNA. Additional amounts of DNA can be purchased from OriGene with batch-specific, full-sequence verification at a reduced cost. Please contact our customer care team at [custsupport@origene.com](mailto:custsupport@origene.com) or by calling 301.340.3188 option 3 for pricing and delivery.

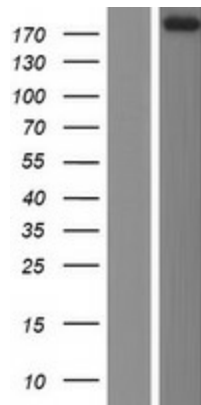
The molecular sequence of this clone aligns with the gene accession number as a point of reference only. However, individual transcript sequences of the same gene can differ through naturally occurring variations (e.g. polymorphisms), each with its own valid existence. This clone is substantially in agreement with the reference, but a complete review of all prevailing variants is recommended prior to use. [More info](#)

<b>OTI Annotation:</b>	This clone was engineered to express the complete ORF with an expression tag. Expression varies depending on the nature of the gene.
<b>Components:</b>	The ORF clone is ion-exchange column purified and shipped in a 2D barcoded Matrix tube containing 10ug of transfection-ready, dried plasmid DNA (reconstitute with 100 ul of water).
<b>Reconstitution Method:</b>	<ol style="list-style-type: none"><li>1. Centrifuge at 5,000xg for 5min.</li><li>2. Carefully open the tube and add 100ul of sterile water to dissolve the DNA.</li><li>3. Close the tube and incubate for 10 minutes at room temperature.</li><li>4. Briefly vortex the tube and then do a quick spin (less than 5000xg) to concentrate the liquid at the bottom.</li><li>5. Store the suspended plasmid at -20°C. The DNA is stable for at least one year from date of shipping when stored at -20°C.</li></ol>
<b>RefSeq:</b>	<a href="#">NM_022648.6</a>
<b>RefSeq Size:</b>	7261 bp
<b>RefSeq ORF:</b>	5208 bp
<b>Locus ID:</b>	7145
<b>UniProt ID:</b>	<a href="#">Q9HBL0</a>
<b>Cytogenetics:</b>	2q35
<b>Protein Families:</b>	Druggable Genome
<b>MW:</b>	185.5 kDa
<b>Gene Summary:</b>	The protein encoded by this gene localizes to focal adhesions, regions of the plasma membrane where the cell attaches to the extracellular matrix. This protein crosslinks actin filaments and contains a Src homology 2 (SH2) domain, which is often found in molecules involved in signal transduction. This protein is a substrate of calpain II. Alternative splicing results in multiple transcript variants encoding different isoforms. [provided by RefSeq, Apr 2015]

Product images:



Circular map for RC224050



Western blot validation of overexpression lysate (Cat# [LY411619]) using anti-DDK antibody (Cat# [TA50011-100]). Left: Cell lysates from untransfected HEK293T cells; Right: Cell lysates from HEK293T cells transfected with RC224050 using transfection reagent MegaTran 2.0 (Cat# [TT210002]).