

Product datasheet for RC224048

NNT (NM_182977) Human Tagged ORF Clone

Product data:

Product Type:	Expression Plasmids
Product Name:	NNT (NM_182977) Human Tagged ORF Clone
Tag:	Myc-DDK
Symbol:	NNT
Synonyms:	GCCD4
Mammalian Cell Selection:	Neomycin
Vector:	pCMV6-Entry (PS100001)
E. coli Selection:	Kanamycin (25 ug/mL)
ORF Nucleotide Sequence:	>RC224048 ORF sequence Red=Cloning site Blue=ORF Green=Tags(s)

TTTTGTAATACGACTCACTATAGGGCGGCCGGAATTCGTCGACTGGATCCGGTACCGAGGAGATCTGCC
GCC**CGATCGCC**

ATGGCAAACCTATTGAAAACAGTGGTACTGGCTGCTCGTCTACTTAGCAATTTGGGGTCTGTAA
AGGGTCTACGTGTGAAGAAGGATTTTTACGAACATTTATACTACCAAGAAGTGGTGTAAAGCGCC
TGTA AAC CAGGAATCCATATAAGCAACTGACTGTTGGAGTCCCAAGAGATATCCAAATGAGAAG
CGAGTGGCATTGCTCCTGCTGGTGTTCAGAACTGGTCAAGCAGGGTTTAATGTTGCTGTTGGAATCGG
GTGCGGGCGAAGCTTCCAAGTTCAGATGATCACTATAGAGTGGCAGGTGCCAAATCCAAGGGGCAAA
GGAAGTGTGGCTTCTGATTTGGTGGTCAAAGTGCAGGCCCTATGGTTAATCCAACATTAGGTGTTTCAT
GAAGCTGACCTTTTAAAGACATCAGGAACGCTGATTAGTTTTATTACCCAGCCAAAATCCAGAGTTGC
TAAATAAACTTTCCAAAGAAAACTACAGTTCGGCAATGGACCAGGTTCCAAGAGTCACAATTGCTCA
GGGATATGATGCGCTAAGCTCCATGGCCAACTTGCAGGTTATAAGGCTGTTGCTCCTAGCAGCAATCAT
TTTGGACGTTTTTTACTGGTCAGATCACAGCTGCTGGAAAAGTTCCTCCAGCTAAGATTCTGATAGTTG
GTGGTGGTGTGCTGGGCTTCTTGCAGGCGCAGCAAAGTTCGATGGGTGCAATTTGTCGAGGATTTGA
CACAAGAGCTGCAGCTTTGGAACAGTTCAGTCTCTTGGTGTGAGCCCTGGAGGTGACTTGAAGGAA
TCTGGTGAGGGACAAGGAGGATATGCAAAGAGATGTCCAAAGAGTTCATTGAAGCTGAAATGAAACTCT
TTGCTCAACAATGCAAGGAGGTAGACATCCTTATCAGCACAGCACTTATTCCAGGTAAAAAGCTCCAGT
TTTTTTAATAAAGAAATGATTGAGTCAATGAAGGAAGTTTCAGTTGTTGTGGATTTAGCTGCTGAGGCT
GGTGGAACTTTGAAACCACTAAGCCAGGAGAAGTCTACATTCATAAGGGAATTACTCACATAGGCTACA
CAGACCTGCCAGCCGAATGGCCACTCAGGCCAGCACCTTATATCCAACAACATCACCAACTCCTGAA
GGCCATCAGCCCGACAAAGATAATTTTTATTTGATGTGAAAGATGACTTTGACTTTGGTACGATGGGT
CATGTCATTAGAGGAAGTGTAGTGTGAAAGATGGTAAAGTATTTCCAGCTCCACACCGAAAAATA
TTCTCAAGGTGCCCGAGTAAAACAGAAGACAGTGGCTGAGCTGGAAGCTGAAAAAGCAGCTACCATTAC
ACCTTCAGGAAGACAATGTCAACGGCTTCTGCATATACAGCAGGTCTCACAGGGATACTGGGTTGGCC



[View online >](#)

ATTGCGGCTCCCAATCTAGCCTTTTCTCAGATGGTGACCACTTTTGGCTTGGCTGGCATTGTGGGGTATC
 ATACCGTCTGGGGAGTGACCCCTGCTCTCCACTCACCCTGATGTCTGTGACAAATGCAATCTCAGGGCT
 GACTGCAGTTGGTGGGTTGGCACTGATGGGAGGACATTTGTATCCTTCCACAACCTTCTCAGGGCCTTGCT
 GCTCTTGTGCATTATATCCTCTGTCAACATTGCAGGTGGCTTCTGGTGACTCAGAGAATGCTGGACA
 TGTTCAAGCGTCCCCTGACCCCCAGAATACTACCTGTACCTGTCCCTGCCGGCACCTTTGTTGG
 TGGATATTTAGCTGCCCTCTACAGTGGTTATAACATTGAACAGATCATGTACCTAGGCTCGGTTTGTGC
 TGTGTCCGTTGGCTGGCCCTCCACCCAGGGAACAGCACGCTTGGCAATGCATGGGCATGATTG
 GGGTTGCTGGAGGACTGGCAGCCACCCTCGGAGTCTAAAACCGGGCCAGAATTAAGCTCAGATGTC
 TGGAGCGATGGCTTTGGGTGGTACCATTGGATTGACAATTGCCAAACGCATCCAGATTTCTGATTTACCT
 CAATTAGTTGCTGCTTTTACAGTTTGTGGGTTTGGCAGCTGTACTTACTTGCATAGCTGAGTACATTA
 TAGAATATCCACATTTTGTACGGATGCAGCAGCAAACTCACCAAGATTGTGGCCTACCTCGGCACCTTA
 CATTGGTGGCGTACCTTTAGTGGTCTCTCATTGCCTATGGAAAATGCAGGGTCTCCTGAAATCTGCC
 CCTCTCTACTGCCTGGAAGCACTTACTCAATGCAGGCTTACTGGTGTAGTGTGGCGGGATAATCC
 CATTATGGTGGACCAAGCTTTACTACTGGCATCACCTGTCTGGGTTTCTGCTCTCTCTGCTGT
 CATGGGTGTGACTTTGACAGCTGCTATTGGGGTGTGACATGCCCGTCTTACTGTGCTGAACAGC
 TACTCAGGCTGGCCCTGTGTGCAGAGGCTTCTGCTCAACAACAATCTGCTGACCATCGTGGGTGCAC
 TCATAGGCTCGTCTGGTCTATCCTGTCATACATCATGTGTGTGGCAATGAATCGCTCCCTGGCTAATGT
 GATTCTTGAGGCTATGGCACCCTTCAACAGCTGGTGGAAAACCATGGAAATTTCTGGCACACATACG
 GAAATCAACCTTGACAATGCAATTGACATGATTGAGAAGCTAATAGCATTATTATACACCAGGCTATG
 GTCTCTGTGCAGCAAAGCTCAATACCCATTGCTGATTTGGTAAAGATGCTCACTGAGCAAAGGCAAAA
 AGTCAGGTTTGAATTCACCCAGTTGCAGGCCAATGCCTGGTCAAGTAAATGTGCTGCTGGCTGAGGCT
 GGTGTGCCATGACATTGTGTGGAAATGGATGAGATCAACCATGATTTCCAGATACCTATTATTCAGGCAT
 TTGTAATTTGAGCTAATGACACTGTTAATTCAGCAGCTCAAGAAGATCCCAACTATTATTCAGGCAT
 GCCAGTCTTGAGGCTGGAATAAAGCAGGTGATTGTTATGAAGAGGCTTTGGGTGTTGGCTATGCT
 GCAGTGGACAATCCAATCTTCTACAAACCTAACACGGCCATGCTTCTAGGTGATGCCAAGAAAACATGTG
 ACGCGCTCCAGCGAAAGTTAGAGAATCTATCAGAAG

ACGCGTACGCGGCCGCTCGAGCAGAACTCATCTCAGAAGAGGATCTGGCAGCAAATGATATCCTGGATT
 ACAAGGATGACGACGATAAGGTTTAA

Protein Sequence:

>RC224048 protein sequence
 Red=Cloning site Green=Tags(s)

MANLLKTVVTVGCSCPLLSNLGSCKGLRVKDKFLRFTFYTHQELWCKAPVKPGIPYKQLTVGVPKEIFQNEK
 RVALSPAGVQNLVKQGFNVVVEGAGEASKFSDDHYRVAGAQIQGAKEVLASDLVVKVRAPMVNPTLGVH
 EADLLKTSGLTISFIYPAQNPELLNKLQRKTTVLAMDQVPRVTIAQGYDALSSMANIAGYKAVVLAANH
 FGRFFTGQITAAGKVPPAKILIVGGVAGLASAGAAKSMGAIVRGFDTRAAALEQFKSLGAEPLEVDLKE
 SGEQGGYAKEMSKEFIEAEMKLFQQCKEVDILISTALIPGKKAPVLFNKEMIESMKEGSVVVDLAAEA
 GGNFETTKPGELYIHKGITHTIGYTDLP SRMATQASTLYSNNITKLLKAI SPDKDNFYFDVKDDDFDGTMG
 HVIRGTVMKDGKVIFFAPTPKNI PQGAPVKQTVAELEAEKAATITPFRKTMSTASAYTAGL TGILGLG
 IAAPNLAFFSQMVTTFGLAGIVGYHTVWGVTPALHSPLMSVTNAISGLTAVGGLALMGGHLYPSTTSQGLA
 ALAAFISSVNIAGGFLVTQRMLDMFKRPTDPPEYNYLYLLPAGTFVGGYLAALYSYGNIEQIMYLGSLC
 CVGALAGLSTQGTARLGNALGMIGVAGGLAATLGLVKPGPELLAQMSGAMALGGTIGLTI AKRIQISDLP
 QLVAAFHSLVGLAAVLTCIAEYIEYPHFATDAAANLTKIVAYLGTYYIGGVTFSGSLIAYGKLQGLLKSA
 PLLLLPGRHLLNAGLLAASVGGIIPFMVDPSTFTGITCLGSVSALSAVMGVTLTAAIGGADMPVITVLS
 YSWALCAEGFLLNNLLTIVGALIGSSGAILSYIMCVAMNRLANVILGGYGTSTAGGKPMIEISGHT
 EINLDNAIDMIREANSIIITPGYGLCAAKAQYPIADLVKMLTEQKKVRFGIHPVAGRMPGQLNVLLEAE
 GVPYDIVLEMDEINHDFPDTDLVLVIGANDTVNSAAQEDPNSIIAGMPVLEVWKSQVIVMKRSLGVGYA
 AVDNPIFYKPNAMLLGDAKKTCDALQAKVRESYQK

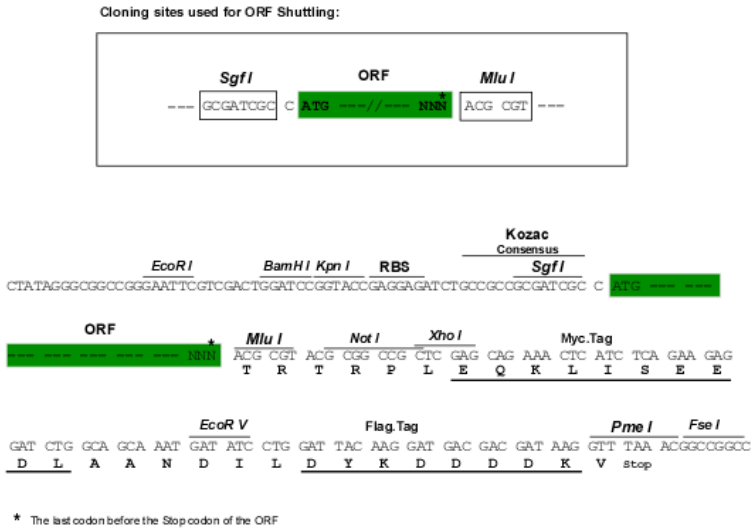
TRTRPLEQKLI SEEDLAANDILDYKDDDDKV

Chromatograms:

https://cdn.origene.com/chromatograms/mk6561_d07.zip

Restriction Sites: SgfI-MluI

Cloning Scheme:



ACCN: NM_182977

ORF Size: 3258 bp

OTI Disclaimer: The molecular sequence of this clone aligns with the gene accession number as a point of reference only. However, individual transcript sequences of the same gene can differ through naturally occurring variations (e.g. polymorphisms), each with its own valid existence. This clone is substantially in agreement with the reference, but a complete review of all prevailing variants is recommended prior to use. [More info](#)

OTI Annotation: This clone was engineered to express the complete ORF with an expression tag. Expression varies depending on the nature of the gene.

Components: The ORF clone is ion-exchange column purified and shipped in a 2D barcoded Matrix tube containing 10ug of transfection-ready, dried plasmid DNA (reconstitute with 100 ul of water).

- Reconstitution Method:**
1. Centrifuge at 5,000xg for 5min.
 2. Carefully open the tube and add 100ul of sterile water to dissolve the DNA.
 3. Close the tube and incubate for 10 minutes at room temperature.
 4. Briefly vortex the tube and then do a quick spin (less than 5000xg) to concentrate the liquid at the bottom.
 5. Store the suspended plasmid at -20°C. The DNA is stable for at least one year from date of shipping when stored at -20°C.

RefSeq: [NM_182977.3](#)

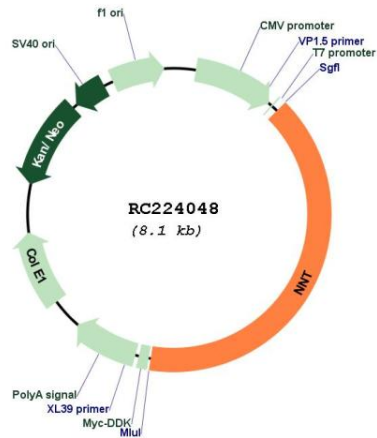
RefSeq Size: 4655 bp

RefSeq ORF: 3261 bp

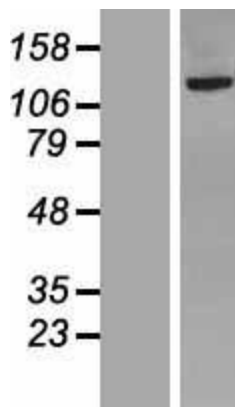
Locus ID: 23530

UniProt ID: [Q13423](#)
Cytogenetics: 5p12
Protein Families: Transmembrane
Protein Pathways: Metabolic pathways, Nicotinate and nicotinamide metabolism
MW: 113.9 kDa
Gene Summary: This gene encodes an integral protein of the inner mitochondrial membrane. The enzyme couples hydride transfer between NAD(H) and NADP(+) to proton translocation across the inner mitochondrial membrane. Under most physiological conditions, the enzyme uses energy from the mitochondrial proton gradient to produce high concentrations of NADPH. The resulting NADPH is used for biosynthesis and in free radical detoxification. [provided by RefSeq, Sep 2016]

Product images:



Circular map for RC224048



Western blot validation of overexpression lysate (Cat# [LY405292]) using anti-DDK antibody (Cat# [TA50011-100]). Left: Cell lysates from untransfected HEK293T cells; Right: Cell lysates from HEK293T cells transfected with RC224048 using transfection reagent MegaTran 2.0 (Cat# [TT210002]).