

Product datasheet for **RC224042**

LCOR (NM_032440) Human Tagged ORF Clone

Product data:

Product Type:	Expression Plasmids
Product Name:	LCOR (NM_032440) Human Tagged ORF Clone
Tag:	Myc-DDK
Symbol:	LCOR
Synonyms:	C10orf12; MLR2
Mammalian Cell Selection:	Neomycin
Vector:	pCMV6-Entry (PS100001)
E. coli Selection:	Kanamycin (25 ug/mL)



[View online »](#)

ORF Nucleotide Sequence:

>RC224042 representing NM_032440
 Red=Cloning site Blue=ORF Green=Tags(s)

TTTTGTAATACGACTCACTATAGGGCGGCCGGAATTCGTCGACTGGATCCGGTACCGAGGAGATCTGCC
 GCC**CGGATCGCC**

ATGCAGCGAATGATCCAACAATTTGCTGCTGAATATACCTCAAAAAATAGCTCTACTCAGGACCCAGCC
 AGCCCAATAGCACAAAGAACCAAGCCTGCCGAAAGCATCTCCAGTCACCACCTCTCCCACGGCTGCAAC
 TACTCAGAACCCCTGTGCTCAGCAAACCTTCTCATGGCTGACCAAGACTCACCTCTGGACCTTACTGTCAGA
 AAGTCTCAGTCAGAACCTAGCGAAACAGACGGTGTACTTGATCTGTCCACTAAGAAAAGTCCATGTGCTG
 GCAGCACTTCCCTGAGCCACTCTCCAGGCTGCTCCAGTACTCAAGGGAACGGGGACCTGGGAGACCCAG
 CCAGTACCGCCCAGACGGACTTCGGAGTGGTATGGGGTACCTCCAAGAAGCTTACAGGATGGAACCAGG
 GAAGGTTTTGGACTCCACATCACTCAAAGTCCACTGGCTCGATCCCTGCAGATTAGTGAAGAACTAC
 TGAGCAGAAACCAATTGTCCACAGCTGCCAGCCTTGGGCCATCTGGATTACAGAATCATGGACAACACTT
 AATATTATCCAGGAAGCCTCTTGGGCAAAACACATTACGAGTCAACCTCAGCCGATGAAGTTCAGG
 GAAATGGTGCCTCAGCAACATCAGTGACCTTCTTTTCTTGCAGAAAACCTCTGCCTTTCCAAAAATGG
 CACTTCAAGCAAAAACAAGATGGAAGAAAAGGATGTGAGCCATTCATCTCCTGTAGATTTAAAGATACCACA
 AGTTCGAGGAATGGATCTTTCTTGGGAGTCTCGCACTGGTATCAGTACAGCTATAGCTCTTTGGTAATG
 GGTTACAAAACGGAGAGCGCGCTTAGTAAAAAATTAAGGGCTATTCTTCCAAAACAAAGTAGAAAAAGCA
 TGTTAGATGCTGGACCCGATTCTTGGGGCTCAGATGCTGAGCAGTCTACCTCTGGACAGCCATATCCAC
 ATCGGATCAAGAAGGAGACCCCTGGCTCCAAGCAGCCTCGGAAGAAAAGAGGGCGTTACAGACAGTACAAC
 AGTGAGTACTGGAGGAAGCAATCTCAGTGGTTATGAGTGGAAAAATGAGTGTTTCCAAAGCTCAGAGTA
 TTTATGGGATCCCCACAGTACACTGGAGTACAAAGTAAAGGAGAGGCTGGGCACCTTTGAAAAACCTCC
 AAAGAAAAAGATGAAATTAATGAGGTGGAGGGCCAGATGTTTTCTGTAAGATTGAATTAGATCCCCAG
 GGAGAGGCAGCACAAAGTCAAATGAATCAAAAAACGAG

ACGCGTACGCGGCCGCTCGAGCAGAAACTCATCTCAGAAGAGGATCTGGCAGCAATGATATCCTGGATT
 ACAAGGATGACGACGATAAGGTTTAA

Protein Sequence:

>RC224042 representing NM_032440
 Red=Cloning site Green=Tags(s)

MQRMIQQFAAEYTSKNSSTQDPSQPNSTKNQSLPKASPVTTSPATAATTQNPVLSKLLMADQDSPLDLTVR
 KSQSEPEQDGVLDLSTKKSPCAGSTLSHSPGCSSTQGNRPGRPSQYRPDGLRSGDGVPPRSLQDGR
 EFGHSTSLKVPLARSLQISELLSRNQLSTAASLGPGLQNHGQHLILSREASWAKPHYEFNLSRMKFR
 GNGALSNISDLPFLAENSAFPKMALQAKQDGKKDVSHPVLDKIPQVRGMDLSWESRTGDQYSYSSLVM
 GSQTESALSKLRAILPKQSRKMLDAGPDSWGSDAEQSTSGQPYPTSDQEGDPGSKQPRKKRGRYRQYN
 SEILEEATISVVMMSGKMSVSKAQSIYIPHSTLEYKVKERLGTLPKPPKKMKLMRSEGPVSVKIELDPQ
 GEAAQSANESKNE

TRTRPLEQKLISEEDLAANDILDYKDDDDKV

Chromatograms:

https://cdn.origene.com/chromatograms/mk8044_a08.zip

Restriction Sites:

Sgfl-Mlul

Cloning Scheme:


ACCN: NM_032440

ORF Size: 1299 bp

OTI Disclaimer: The molecular sequence of this clone aligns with the gene accession number as a point of reference only. However, individual transcript sequences of the same gene can differ through naturally occurring variations (e.g. polymorphisms), each with its own valid existence. This clone is substantially in agreement with the reference, but a complete review of all prevailing variants is recommended prior to use. [More info](#)

OTI Annotation: This clone was engineered to express the complete ORF with an expression tag. Expression varies depending on the nature of the gene.

Components: The ORF clone is ion-exchange column purified and shipped in a 2D barcoded Matrix tube containing 10ug of transfection-ready, dried plasmid DNA (reconstitute with 100 ul of water).

Reconstitution Method:

1. Centrifuge at 5,000xg for 5min.
2. Carefully open the tube and add 100ul of sterile water to dissolve the DNA.
3. Close the tube and incubate for 10 minutes at room temperature.
4. Briefly vortex the tube and then do a quick spin (less than 5000xg) to concentrate the liquid at the bottom.
5. Store the suspended plasmid at -20°C. The DNA is stable for at least one year from date of shipping when stored at -20°C.

RefSeq: [NM_032440.4](#)

RefSeq Size: 4852 bp

RefSeq ORF: 1302 bp

Locus ID: 84458

UniProt ID: [Q96JN0](#)

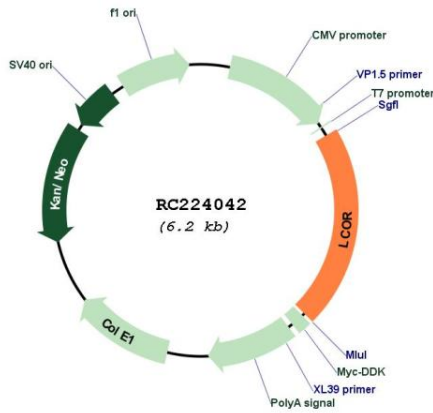
Cytogenetics: 10q24.1

Protein Families: Druggable Genome

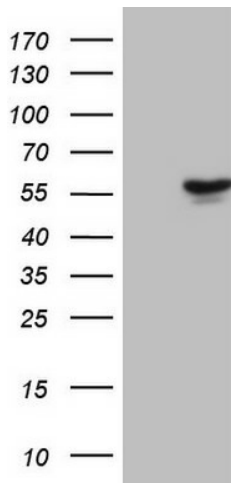
MW: 46.8 kDa

Gene Summary: LCOR is a transcriptional corepressor widely expressed in fetal and adult tissues that is recruited to agonist-bound nuclear receptors through a single LxxLL motif, also referred to as a nuclear receptor (NR) box (Fernandes et al., 2003 [PubMed 12535528]).[supplied by OMIM, Mar 2008]

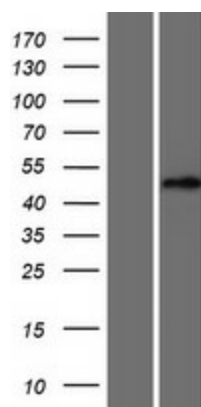
Product images:



Circular map for RC224042



HEK293T cells were transfected with the pCMV6-ENTRY control (Cat# [PS100001], Left lane) or pCMV6-ENTRY LCOR (Cat# RC224042, Right lane) cDNA for 48 hrs and lysed. Equivalent amounts of cell lysates (5 ug per lane) were separated by SDS-PAGE and immunoblotted with anti-LCOR (Cat# [TA808021])(1:2000). Positive lysates [LY410134] (100ug) and [LC410134] (20ug) can be purchased separately from OriGene.



Western blot validation of overexpression lysate (Cat# [LY410134]) using anti-DDK antibody (Cat# [TA50011-100]). Left: Cell lysates from untransfected HEK293T cells; Right: Cell lysates from HEK293T cells transfected with RC224042 using transfection reagent MegaTran 2.0 (Cat# [TT210002]).