

Product datasheet for RC224041

TPRX1 (NM_198479) Human Tagged ORF Clone

Product data:

Product Type: Expression Plasmids
 Product Name: TPRX1 (NM_198479) Human Tagged ORF Clone
 Tag: Myc-DDK
 Symbol: TPRX1
 Synonyms: TPRX
 Mammalian Cell Selection: Neomycin
 Vector: pCMV6-Entry (PS100001)
 E. coli Selection: Kanamycin (25 ug/mL)
 ORF Nucleotide Sequence: >RC224041 representing NM_198479
 Red=Cloning site Blue=ORF Green=Tags(s)

TTTTGTAATACGACTCACTATAGGGCGGCCGGAATTCGTCGACTGGATCCGGTACCGAGGAGATCTGCC
 GCC**CGATCGCC**

ATGCTCAGCCTCAGGGAGCAACAGCTGCAGGTGTGGTTCAAGAATCGCCGCGCCAACTAGCTCGGGAGC
 GGCGGCTCCAGCAGCAGCCCCAGCGCTCCCTGGGCAGAGAGGCCGAGGAGCCCGCTGCGCCCTAGT
 CCCTGCAGCCTTGCTCCGCACCTCAGCGGGGCCCTCGGGAATCCTTCCAGCGCGGAACCCACGATC
 TGCAGCCTCCACCAGGCCTGGGGTGGCCCTGGGTGCAGAGCCAGAAGGGCATCCAGCTGCCCTGAGTC
 CAGGCCCTGGCCGATCCCTGCCCAATCCAGGCCAGCCAGATCCCAGGCCACTCCCTGGCTCAAT
 TCCAGGCCAATTCAGGCCAGCTCAGATCCCAAGCCGATCCCAGGCCAATCCAGGCCAATTTCA
 GGCCAGTCCAGATCCCAGGCCATTCCGTGGCCCAATCCAGGCCAATTTCCAGGCCAGCCCCGATCC
 CAGGCCAATCTCAGGCCATTCTCAGGCCAAACCCAGGCCGATCCCAGGCCAAACCCAGGCCGAT
 CCCAGGCCAATCTCAGGCCGATCCCAGGCCAATCTCAGTCCCGATCCCAGGCCGATCCCAGGCCA
 ATCTCAGGCCAATCTCAGGCCAAACCCAGGCCGATCCCAGGCCAATCCCAGGCCAATCTCAGGCC
 CGAACCCAGGCCGATCCCAGGCCAATCTCAGGCCGAACCCAGGCCTGATCCCAGGCCAATCCCAGG
 CCCAATCTCAGGCCAGGCCAATATAGGCCGATTCCCAGGCCAGCCAGATCCCAGGCCAGGCAGA
 CTCCAAGGCCAGGTCCATCTTAAGTCTGGCCGGATGCGAAGCCCTGGCTCACTCCAGGCCAGGCC
 CGATTTTAGGCCAGGCTCAGGCCAGGCTCAGGCTCAGTCCAGCTCCAATCCCAGGCCAGGATCACT
 CCCAGGCCAGGCCCTTATGGCCTCAGAGCCCGATGCCTCCGACTTCTTGCCAGACACCCAGTTATTC
 CCTCACTTACAGAGCTGCTCCTACCCCTAGACCCCTTGAGGGATCCTCAGTCTCCACCATGACCTCTC
 AGTACCAAGAAGGGGATGACTCTATGGCAAAAAACACTCAGGGTCTCAGCCCCAAGAGGAGGGTGGCTC
 TGTGAATGAAATCACTCAGGCCAGGTTATTACTGGATTTA

ACGGTACGGCGCGCTCGAGCAGAACTCATCTCAGAAGAGGATCTGGCAGCAATGATATCCTGGATT
 ACAAGGATGACGACGATAAGGTTAA



Protein Sequence: >RC224041 representing NM_198479
Red=Cloning site Green=Tags(s)

MLSLREQLQVWFKNRRAKLARERRLQQQPQRVPGQRGRGARAAPLVPAASASAPQRGPGSGILPAAEPTI
 CSLHQAWGGPGCRAQKGI PAALSPGPGPI PAPIPGPAQIPGGLPGSIPGPIPGPAQIPSPIPAPIPGPI
 GPVQIPGPFRRGPIPGPISGPAPIPGPISGPFGSPNPGPIPGPNPGPIPGPISGPIPGPISVPIPGPIPGP
 ISGPISGPNPGPIPGPIPGPISGPNPGPIPGPISGPNGLIPGPIPGPISGPGPIIGPIPSPAQIPGPGR
 LQGP GPILSPGRMRSPGSLPGLAPILGP GSGPGSVPAPIPGGSLPAPAPLWPQSPDASDFLPDTQLF
 PHFTELLLPLDPLEGSSVSTMTSQYQEGDDSMGKKHSGSQPQEEGGSVNENHSGPRLLLLDL

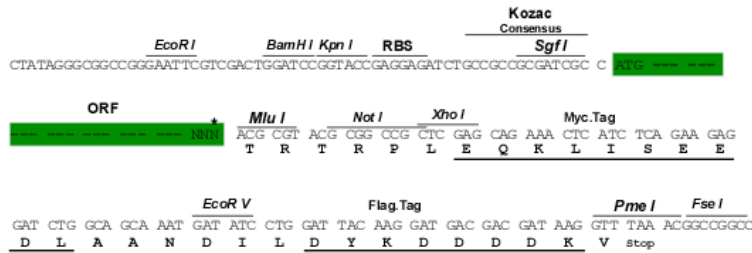
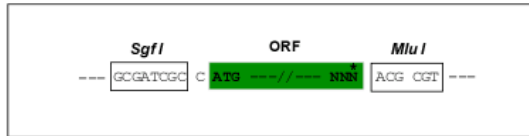
TRTRPLEQKLISEEDLAANDILDYKDDDDKV

Chromatograms: https://cdn.origene.com/chromatograms/ja1515_e03.zip

Restriction Sites: SgfI-MluI

Cloning Scheme:

Cloning sites used for ORF Shuttling:



* The last codon before the Stop codon of the ORF

ACCN: NM_198479

ORF Size: 1233 bp

OTI Disclaimer: The molecular sequence of this clone aligns with the gene accession number as a point of reference only. However, individual transcript sequences of the same gene can differ through naturally occurring variations (e.g. polymorphisms), each with its own valid existence. This clone is substantially in agreement with the reference, but a complete review of all prevailing variants is recommended prior to use. [More info](#)

OTI Annotation: This clone was engineered to express the complete ORF with an expression tag. Expression varies depending on the nature of the gene.

Components: The ORF clone is ion-exchange column purified and shipped in a 2D barcoded Matrix tube containing 10ug of transfection-ready, dried plasmid DNA (reconstitute with 100 ul of water).

Reconstitution Method:

1. Centrifuge at 5,000xg for 5min.
2. Carefully open the tube and add 100ul of sterile water to dissolve the DNA.
3. Close the tube and incubate for 10 minutes at room temperature.
4. Briefly vortex the tube and then do a quick spin (less than 5000xg) to concentrate the liquid at the bottom.
5. Store the suspended plasmid at -20°C. The DNA is stable for at least one year from date of shipping when stored at -20°C.

Note: Plasmids are not sterile. For experiments where strict sterility is required, filtration with 0.22um filter is required.

RefSeq: [NM_198479.2](#), [NP_940881.2](#)

RefSeq Size: 1839 bp

RefSeq ORF: 1236 bp

Locus ID: 284355

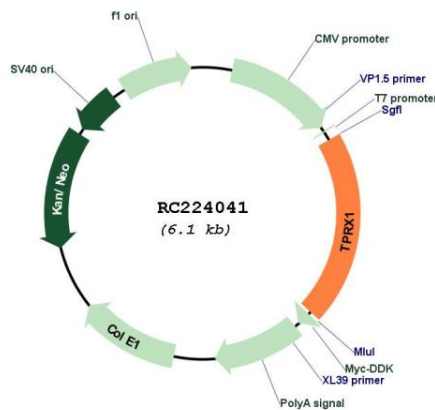
UniProt ID: [Q8N7U7](#)

Cytogenetics: 19q13.33

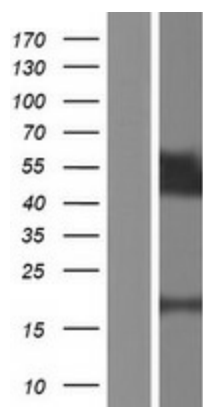
MW: 40.4 kDa

Gene Summary: Homeobox genes encode DNA-binding proteins, many of which are thought to be involved in early embryonic development. Homeobox genes encode a DNA-binding domain of 60 to 63 amino acids referred to as the homeodomain. This gene is a member of the TPRX homeobox gene family. [provided by RefSeq, Jul 2008]

Product images:



Circular map for RC224041



Western blot validation of overexpression lysate (Cat# [LY404913]) using anti-DDK antibody (Cat# [TA50011-100]). Left: Cell lysates from untransfected HEK293T cells; Right: Cell lysates from HEK293T cells transfected with RC224041 using transfection reagent MegaTran 2.0 (Cat# [TT210002]).