

Product datasheet for **RC224039**

PGRP1B (PGLYRP4) (NM_020393) Human Tagged ORF Clone

Product data:

Product Type:	Expression Plasmids
Product Name:	PGRP1B (PGLYRP4) (NM_020393) Human Tagged ORF Clone
Tag:	Myc-DDK
Symbol:	PGRP1B
Synonyms:	PGLYRPIbeta; PGRP-Ibeta; PGRPIB; SBBI67
Mammalian Cell Selection:	Neomycin
Vector:	pCMV6-Entry (PS100001)
E. coli Selection:	Kanamycin (25 ug/mL)
ORF Nucleotide Sequence:	>RC224039 representing NM_020393 Red=Cloning site Blue=ORF Green=Tags(s)

TTTTGTAATACGACTCACTATAGGGCGCCGGGAATTCGTCGACTGGATCCGGTACCGAGGAGATCTGCC
GCC**CGATCGCC**

ATGCTGCCGTGGCTTCTTGCTTCTCTGCTCTGGGTATCCAGGCCTGGGGTATTCTCCTGGAACAAA
CACAAGCTAACAGGTATCAGAGGGCTCCAGTACCTATTTGAGAATCTCCCAGCTACTGAAAAAGG
CCTTCCCACAGATGTCTCCACCAGGTCTCTCGCAAGGCATGGGGGCAGAAGCTGTTGGCTGCAGTATT
CAGCTGACCACGCCAGTGAATGCTTGTATACACCATGTCCTGGACTGGAGTGCACGACCAGACAG
TCTGCAGCCAGAGACTGCGGGAAGTGCAGGCCATCATGTCCACAACAACAGTGGGTGTGATGTGGCCTA
CAACTTCTGGTTGGGGATGATGGCAGGGTGTATGAAGGTGTTGGCTGGAATATCCAAGGAGTGCACACC
CAAGGCTACAACAACATCTCCCTGGGCTTTGCCTTCTTCGGCACTAAGAAAGGCCACAGTCCCAGCCCTG
CTGCCCTGTGGCCATGGAAAACCTAATCACCTATGCTGTCCAGAAGGGCCACCTGTCCAGTTATGT
TCAGCCACTTCTTGGAAAGGCGAGAAGTGCCTGGCCCCCGGCAGAAGACAAGCCTGAAGAAGGCTTGC
CCCGCGTGTGCCACGGTCTGTGTGGGGAGCCAGGGAGCCACTGTCCAGGATGACTCTCCAGCGA
AGTATGGCATCATTATCCACACTGCCGGGAGGACCTGCAACATTTCTGATGAGTGCCGCCTGCTGGTCCG
GGACATCCAGTCTTTCTACATAGACAGGCTCAAGTCAAGTGCACATTGGTTATAACTTCTGGTGGCCAG
GATGGCGCCATTTATGAAGGGTGGGCTGGAATGTCCAAGGCTCCTCCACCCTGGCTACGATGACATTG
CCCTGGGCATTACCTTCATGGGCACCTTACAGGTATACCACCAATGCTGCAGCACTAGAGGCAGCCCA
AGACCTGATCCAGTGTGCCATGGTCAAAGGTTACCTGACTCCCAACTACCTGCTGGTGGGCCACAGTGT
GTGGCCGAACCTGTCTCCTGGCAGGCTTTGTACAACATCATCAGCACCTGGCCTCATTTCAAACAC

ACGCGTACGCGGCCGCTCGAGCAGAAACTCATCTCAGAAGAGGATCTGGCAGCAATGATATCCTGGATT
ACAAGGATGACGACGATAAGGTTAA



[View online »](#)

Protein Sequence: >RC224039 representing NM_020393
Red=Cloning site Green=Tags(s)

MLPWLLVFSALGIQAWGDSSWNKTQAKQVSEGLQYLFENISQLTEKGLPTDVSTTVSRKAWGAEAVGCSI
 QLTPVNVLVIIHVPGLLECHDQTVCSQRLRELQAHHVHNNSGCDVAYNFLVGDDGRVYEGVGNIQGVHT
 QGYNNISLGF AFGTKKGHSPSPAALSAMENLITYAVQKGLSSSYVQPLLGKGENCLAPRQKTSKKAC
 PGVVPRSVWGARETHCPRMTLPKAYGIIHTAGRTCNISDECRLLVRDIQSFYIDRLKSCDIGYNFLVGQ
 DGAIYEGVGNVQGSSTPGYDDIALGITFMGTFTGIPPNAAALEAAQDLIQCAMVKGYLTPNYLLVGHSD
 VARTLSPGQALYNIISTWPHFKH

TRTRPLEQKLISEEDLAANDILDYKDDDDKV

Chromatograms: https://cdn.origene.com/chromatograms/ja1283_d03.zip

Restriction Sites: SgfI-MluI

Cloning Scheme:



ACCN: NM_020393

ORF Size: 1119 bp

OTI Disclaimer: The molecular sequence of this clone aligns with the gene accession number as a point of reference only. However, individual transcript sequences of the same gene can differ through naturally occurring variations (e.g. polymorphisms), each with its own valid existence. This clone is substantially in agreement with the reference, but a complete review of all prevailing variants is recommended prior to use. [More info](#)

OTI Annotation: This clone was engineered to express the complete ORF with an expression tag. Expression varies depending on the nature of the gene.

Components: The ORF clone is ion-exchange column purified and shipped in a 2D barcoded Matrix tube containing 10ug of transfection-ready, dried plasmid DNA (reconstitute with 100 ul of water).

Reconstitution Method:

1. Centrifuge at 5,000xg for 5min.
2. Carefully open the tube and add 100ul of sterile water to dissolve the DNA.
3. Close the tube and incubate for 10 minutes at room temperature.
4. Briefly vortex the tube and then do a quick spin (less than 5000xg) to concentrate the liquid at the bottom.
5. Store the suspended plasmid at -20°C. The DNA is stable for at least one year from date of shipping when stored at -20°C.

RefSeq: [NM_020393.2](#), [NP_065126.2](#)

RefSeq Size: 1853 bp

RefSeq ORF: 1122 bp

Locus ID: 57115

UniProt ID: [Q96LB8](#)

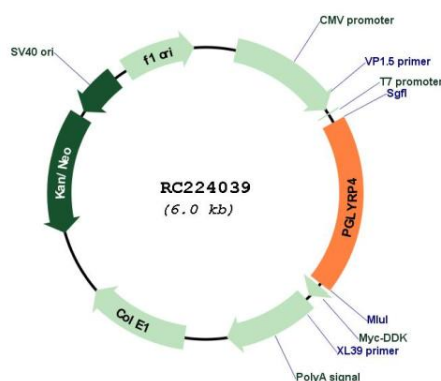
Cytogenetics: 1q21.3

Protein Families: Druggable Genome

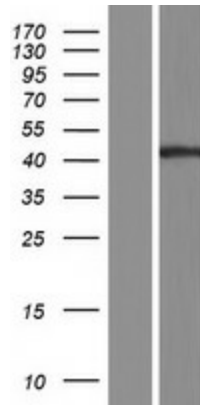
MW: 38.7 kDa

Gene Summary: Summary: This gene encodes a peptidoglycan recognition protein, which belongs to the N-acetylmuramoyl-L-alanine amidase 2 family. These proteins are part of the innate immune system and recognize peptidoglycan, a ubiquitous component of bacterial cell walls. This antimicrobial protein binds to murein peptidoglycans of Gram-positive bacteria. [provided by RefSeq, Oct 2014]

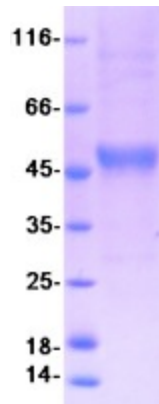
Product images:



Circular map for RC224039



Western blot validation of overexpression lysate (Cat# [LY412496]) using anti-DDK antibody (Cat# [TA50011-100]). Left: Cell lysates from untransfected HEK293T cells; Right: Cell lysates from HEK293T cells transfected with RC224039 using transfection reagent MegaTran 2.0 (Cat# [TT210002]).



Coomassie blue staining of purified PGLYRP4 protein (Cat# [TP324039]). The protein was produced from HEK293T cells transfected with PGLYRP4 cDNA clone (Cat# RC224039) using MegaTran 2.0 (Cat# [TT210002]).