

Product datasheet for **RC224036**

ELF2 (NM_201999) Human Tagged ORF Clone

Product data:

Product Type:	Expression Plasmids
Product Name:	ELF2 (NM_201999) Human Tagged ORF Clone
Tag:	Myc-DDK
Symbol:	ELF2
Synonyms:	b; EU32; NERF; NERF-1A; NERF-1a; NERF-1B; NERF-2
Mammalian Cell Selection:	Neomycin
Vector:	pCMV6-Entry (PS100001)
E. coli Selection:	Kanamycin (25 ug/mL)



[View online »](#)

ORF Nucleotide Sequence:

>RC224036 representing NM_201999
 Red=Cloning site Blue=ORF Green=Tags(s)

TTTTGTAATACGACTCACTATAGGGCGGCCGGAATTCGTCGACTGGATCCGGTACCGAGGAGATCTGCC
 GCC**CGGATCGCC**

ATGACATCAGCAGTGGTTGACAGTGGAGTACTATTTGGAGCTTCCAGCAATGGAGTAGAAAATCAAG
 AGGAAAGTGAAAAGGTTTCTGAATATCCAGCAGTGATTGTGGAGCCAGTTCCAAGTGCCAGATTAGAGCA
 GGGCTATGCAGCCAGGTTCTGGTTTATGATGATGAGACTTATATGATGCAAGATGTGGCAGAAAGACAA
 GAAGTTGAGACCGAGAATGTGGAACAGTGAAGCATCAGTTCACAGCAGTAATGCACACTGTACAGATA
 AGACAATTGAAGCTGCTGAAGCCCTGTTTCATATGGAATCTCCTACCTGCTTGAGGGATTCAAGAAGTCC
 TGAATTCATCCATGCTGCTATGAGGCCAGATGTCATTACAGAACTGTAGTGGAGGTGTCAACTGAAGAG
 TCTGAACCCATGGATACCTCTCTATTCCAACATCACCAGATAGCCATGAACCAATGAAAAAGAAAAAG
 TTGGCCGTAACCAAAGACCCAGCAATACCAATTTCCAATGGGTCTCCTGAGTTAGGTATAAAGAAGAA
 ACCAAGAGAAGGAAAAGGAAACACAACCTATTTGTGGGAGTTTCTTTTAGATCTACTTCAAGATAAAAAT
 ACTTGTCCAGGTATATTAATGGACTCAGAGAGAAAAAGGCATATTCAAGCTGGTGGATTCAAAGGCTG
 TCTCTAAGCTTTGGGAAAGCATAAGAACAACAGACATGAACTATGAAACCATGGGACGAGCTTTGAG
 ATACTACTACAAAGGGGAAATCTTGCAAAGGTTGAAGGACAGAGGCTTGTATATCAGTTCAAGGATATG
 CCGAAAAACATAGTGGTCATAGATGATGACAAAAGTGAACCTGTAATGAAGATTAGCAGGAACACTG
 ATGAAAAATCATTAGAACGAGTGTCACTGTCTGCAGAAAGTCTCCTGAAAGCAGCATCCTCTGTTCCGAG
 TGGAAAAATTCATCCCCTATAAACTGCTCCAGAGCAGAGAAGGGTGTAGCTAGAGTTGTGAATCACT
 TCCCCTGGGCAGGATGCTTCATCCAGGTCCTACTACCACTGCATCTGTGTGAGCAACAGCAGCTCCAA
 GGACAGTTCGTGGCAATGCAGGTACCTGTTGTAATGACATCATTGGGTGAGAAAATTTCAACTGTGGC
 AGTTCAGTCAGTTAATGCAGGTGCACCATAATAACCAGCACTAGTCCAACAACAGCGACCTCTCCAAAG
 GTAGTCATTACAGACAATCCCTACTGTGATGCCAGCTTCTACTGAAAATGGAGACAAAATCCCATGCAGC
 CTGCCAAAATTATTACCATCCCAGCTACACAGCTTGCACAGTGTCAACTGCAGACAAAAGTCAAATCTGAC
 TGGATCAGGAAGCATTAACTATTGTTGGAACCCATTGGCTGTGAGAGCACTTACCCTGTTTCAATAGCC
 CATGGTACACCTGTAATGAGACTATCAATGCCTACTCAGCAGGCATCTGGCCAGACTCCTCCTCGAGTTA
 TCAGTGCAGTCATAAAGGGGCCAGAGGTTAAATCGGAAGCAGTGGCAAAAAGCAAGAACATGATGTGAA
 AACTTTGCAGCTAGTAGAAGAAAAACCAGCAGATGGAAAATAAGACAGTGACCCACGTAGTGGTTGCAGT
 GCGCCTTCAGCTATTGCCCTTCTGTAAGTATGAAAACAGAAGGACTAGTGACATGTGAGAAA

ACGCGTACGCGGCCGCTCGAGCAGAAACTCATCTCAGAAGAGGATCTGGCAGCAAATGATATCCTGGATT
 ACAAGGATGACGACGATAAGGTTTAA

Protein Sequence:

>RC224036 representing NM_201999
 Red=Cloning site Green=Tags(s)

MTSAVVDSGGTILELSSNGVENQESEKVESEYPAVIVEPVPSARLEQGYAAQVLVYDDETYMMQDVAEEQ
 EVETENVETVEASVHSSNAHCTDKTIEAAEALLHMESPTCLRDSRSPFIHAAMRPDVTITETVVEVSTEE
 SEPMDTSP IPTSPDSHEPMKKKVGKPKTQQSPI SNGSPELGIKKKPREGKNTTYLWFLDLLQDKN
 TCPRYIKWTQREKGIKFLVDSKAVSKLWGKHKNKPDMMNYETMGRALRYYYQRGILAKVEGQRLVYQFKDM
 PKNIVVIDDDKSETCNEIDLAGTTDEKSLERVSLAESLLKAASSVRSKNSPINCRAEKGVARVNNIT
 SPGHDASSRSP TTTASVSATAAPRTVRVAMQVPVVM TSLGQKISTVAVQSVNAGAPLITSTSP TTTATSPK
 VVIQT IPTVMPASTENGDKITMQPAKIIITIPATQLAQCLQTKSNLTGSGSINIVGTPLAVRALTPVSIA
 HGTPVMRLSMPTQQASGQTPPRVISAVIKGPEVKSEAVAKKQEHVKTLLVVEEKPADGNKTVTHVVVVV
 APSAIALPVTMKTEGLVTECK

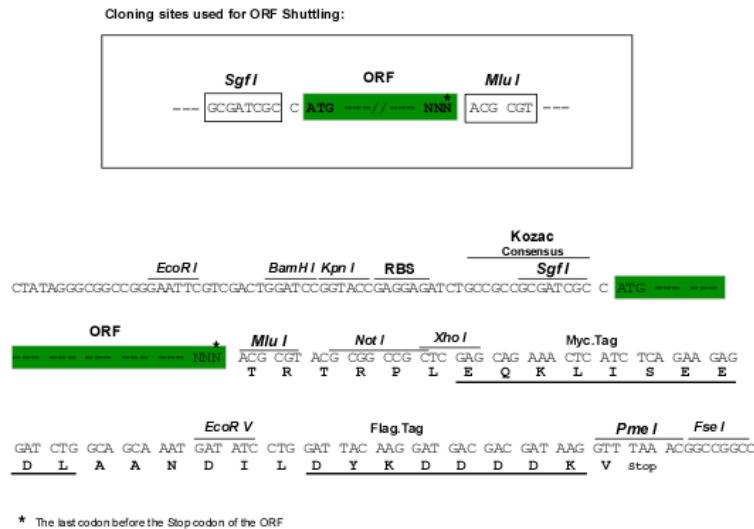
TRTRPLEQKLISEEDLAANDILDYKDDDDKV

Chromatograms:

https://cdn.origene.com/chromatograms/mk6114_g08.zip

Restriction Sites:

Sgfl-Mlul

Cloning Scheme:


ACCN: NM_201999

ORF Size: 1743 bp

OTI Disclaimer: The molecular sequence of this clone aligns with the gene accession number as a point of reference only. However, individual transcript sequences of the same gene can differ through naturally occurring variations (e.g. polymorphisms), each with its own valid existence. This clone is substantially in agreement with the reference, but a complete review of all prevailing variants is recommended prior to use. [More info](#)

OTI Annotation: This clone was engineered to express the complete ORF with an expression tag. Expression varies depending on the nature of the gene.

Components: The ORF clone is ion-exchange column purified and shipped in a 2D barcoded Matrix tube containing 10ug of transfection-ready, dried plasmid DNA (reconstitute with 100 ul of water).

Reconstitution Method:

1. Centrifuge at 5,000xg for 5min.
2. Carefully open the tube and add 100ul of sterile water to dissolve the DNA.
3. Close the tube and incubate for 10 minutes at room temperature.
4. Briefly vortex the tube and then do a quick spin (less than 5000xg) to concentrate the liquid at the bottom.
5. Store the suspended plasmid at -20°C. The DNA is stable for at least one year from date of shipping when stored at -20°C.

RefSeq: [NM_201999.3](#)

RefSeq Size: 3218 bp

RefSeq ORF: 1746 bp

Locus ID: 1998

UniProt ID: [Q15723](#)

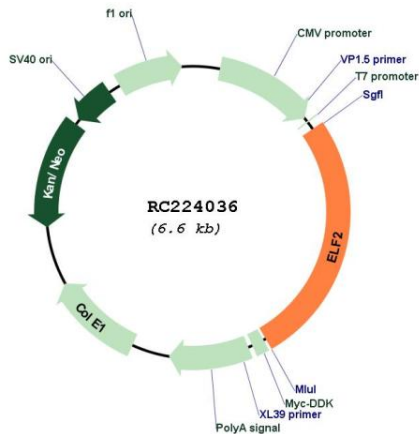
Cytogenetics: 4q31.1

Protein Families: Druggable Genome, Transcription Factors

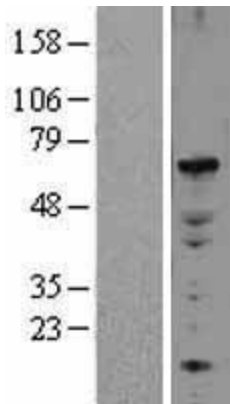
MW: 62.5 kDa

Gene Summary: Isoform 1 transcriptionally activates the LYN and BLK promoters and acts synergistically with RUNX1 to transactivate the BLK promoter.[UniProtKB/Swiss-Prot Function]

Product images:



Circular map for RC224036



Western blot validation of overexpression lysate (Cat# [LY403708]) using anti-DDK antibody (Cat# [TA50011-100]). Left: Cell lysates from untransfected HEK293T cells; Right: Cell lysates from HEK293T cells transfected with RC224036 using transfection reagent MegaTran 2.0 (Cat# [TT210002]).