

Product datasheet for **RC224027**

CoREST (RCOR1) (NM_015156) Human Tagged ORF Clone

Product data:

Product Type:	Expression Plasmids
Product Name:	CoREST (RCOR1) (NM_015156) Human Tagged ORF Clone
Tag:	Myc-DDK
Symbol:	CoREST
Synonyms:	COREST; RCOR
Mammalian Cell Selection:	Neomycin
Vector:	pCMV6-Entry (PS100001)
E. coli Selection:	Kanamycin (25 ug/mL)



[View online »](#)

ORF Nucleotide Sequence:

>RC224027 representing NM_015156
 Red=Cloning site Blue=ORF Green=Tags(s)

TTTTGTAATACGACTCACTATAGGGCGGCCGGGAATTCGTCGACTGGATCCGGTACCGAGGAGATCTGCC
 GCC**CGCATCGCC**

ATGCCGGCCATGGTGGAGAAGGGCCCCGAGGTCTCAGGGAAGCGGAGAGGGAGGAACAACCGCGCCGCCCT
 CCGCCTCCGCGCGCCGCCCTCCGCGCGCCCTCGGCCGCTGCGCCTCGCCAGCCGCCACTGCCGCCCTC
 GGGCGCCGCCCTCCTCAGCCTCGGCCGCCGCCCTCAGCCGCCGCCCCCAATAATGGCCAGAAT
 AAAAGTTTGGCGGCGCGGCCCAATGGCAACAGCAGCAGCAACTCCTGGGAGGAAGGCAGCTCGGGCT
 CGTCCAGCGACGAGGAGCACGGTGGCGGTGGCATGAGGGTCGGACCCAGTACCAGGCGGTGGTCCCGA
 CTTCCAGCCCGCCAACTGGCAAGACGCAGTCAAGAACGGGACAATCTTGGCATGTTGGTCTGGTCAACC
 AATCAAATCTGTGAGAAGCAAGTTGGATGAATACATTGCCATTGCCAAAGAAAAGCATGGGTACAACA
 TGGAACAGGCTCTGGGATGCTTCTGGCATAAACATAATATCGAAAAGTCATTGGCTGATTTGCCAA
 CTTTACCCCTTTCCAGATGAGTGGACTGTGGAAGATAAAGTCTTATTTGAGCAAGCCTTTAGTTTTCAT
 GGGAAAACTTTTCATAGAATCCAACAAATGCTTCCAGATAAATCTATAGCAAAGTCTGGTGAATTTTACT
 ATCTTGGGAAGAAGACGAGGACTAAAACAGTGTGATGGATCGCCATGCCCGGAAACAAAAACGGGAGCG
 GGAGGAGAGCGAGGATGAACTGGAAGAGGCAATGGAAACAATCCATTGACATTGAGGTTGATCAAAAC
 AAGGAAAGCAAAAAGGAGGTTCCCCCTACTGAGACAGTTCCTCAGGTCAAAAAAGAAAAACATAGCACAC
 AAGCTAAAAATAGAGCAAAAAGGAAACCTCAAAAAGGAATGTTTTCTTCAAGAAGATGTGGAGGCTGT
 TTCTGCCAATGCCACTGCTGCTACCACGGTGTGAGACAACTAGACATGGAATTGGTTTCAGTCAAACGA
 CAGATCCAGAATATTAACAGACAAACAGTGTCTCAAAGAAAACTTGATGGTGAATAGAACCATATC
 GACTTCCAGAGGTCATTCAGAAATGTAATGCACGTTGGACTACAGAAGAGCAGCTTCTCGCCGTACAAGC
 CATCAGGAAATATGGCCGAGATTTTCAGGCAATCTCAGACGTGATTGGGAACAAATCAGTGGTACAAGTG
 AAAAACTTTTTGTAAATATCGACGCCCTTCAACATAGATGAAGTTTTACAAGAATGGGAGGCAGAAC
 ATGGTAAAGAAGAGACCAATGGGCCAGTAACCAGAAGCCTGTGAAGTCCCAGATAATTCATTAAGAT
 GCCCGAAGAGGAAGACGAGGCTCCTGTTCTGGATGTCAGATATGCATCTGCCTCC

ACGCGTACGCGGCCGCTCGAGCAGAAACTCATCTCAGAAGAGGATCTGGCAGCAATGATATCCTGGATT
 ACAAGGATGACGACGATAAGGTTTAA

Protein Sequence:

>RC224027 representing NM_015156
 Red=Cloning site Green=Tags(s)

MPAMVEKGPEVSGKRRGRNNAASASAAAASAAASAACSPAATAASGAAASSASAAAAAAPPNNQ
 KSLAAAAAPNGNSSNSWEEGSSGSSSDEEHGGGMRVGPQYQAVVPDFPAKLARRSQERDNLGMLVWSP
 NQNLSEAKLDEYIAIAKEKHHYNEQALGMLFWHKHNIKSLADLPNFTFPDEWTVEDKVLFEQAFSFH
 GKTFHRIQMLPDKSIASLVKFYYSWKKTRTKTSVMDRHARKQKREREESEDELEEANGNNPIDIEVDQN
 KESKKEVPPTETVPQVKKEKHSTQAKNRAKRKPPKGMFLSQEDVEAVSANATAATTVLRQLDMELVSVKR
 QIQNIKQTNLSALKEKLDGGIEPYRLPEVIQKCNARWTTEEQLLAVQAIRKYGRDFQAISDVIIGNKSVVQV
 KNFFVNYRRRFNIDEVLQEWAEHGKEETNGPSNQKPKVSPDNSIKMPEEEDEAPVLDVRYASAS

TRTRPLEQKLISEEDLAANDILDYKDDDDKV

Chromatograms:

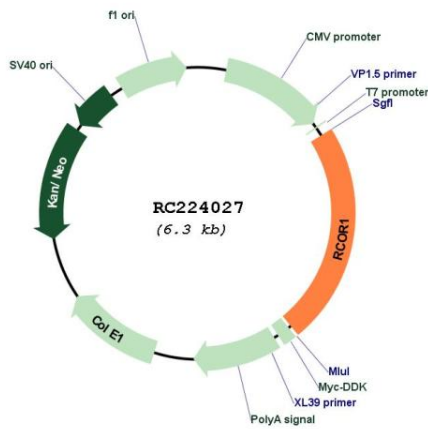
https://cdn.origene.com/chromatograms/mk8120_g09.zip

Restriction Sites:

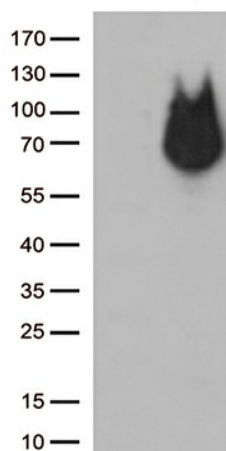
Sgfl-Mlul

RefSeq:	NM_015156.4
RefSeq Size:	5774 bp
RefSeq ORF:	1458 bp
Locus ID:	23186
UniProt ID:	Q9UKL0
Cytogenetics:	14q32.31-q32.32
Domains:	ELM2, myb_DNA-binding
Protein Families:	Transcription Factors
Protein Pathways:	Huntington's disease
MW:	53.8 kDa
Gene Summary:	This gene encodes a protein that is well-conserved, downregulated at birth, and with a specific role in determining neural cell differentiation. The encoded protein binds to the C-terminal domain of REST (repressor element-1 silencing transcription factor). [provided by RefSeq, Aug 2011]

Product images:



Circular map for RC224027



HEK293T cells were transfected with the pCMV6-ENTRY control (Cat# [PS100001], Left lane) or pCMV6-ENTRY RCOR1 (Cat# RC224027, Right lane) cDNA for 48 hrs and lysed. Equivalent amounts of cell lysates (5 ug per lane) were separated by SDS-PAGE and immunoblotted with anti-RCOR1 (Cat# [TA813008])(1:500).