

Product datasheet for RC224022

PCOLE2 (PCOLCE2) (NM_013363) Human Tagged ORF Clone

Product data:

Product Type:	Expression Plasmids
Product Name:	PCOLE2 (PCOLCE2) (NM_013363) Human Tagged ORF Clone
Tag:	Myc-DDK
Symbol:	PCOLE2
Synonyms:	PCPE2
Mammalian Cell Selection:	Neomycin
Vector:	pCMV6-Entry (PS100001)
E. coli Selection:	Kanamycin (25 ug/mL)
ORF Nucleotide Sequence:	>RC224022 representing NM_013363 Red=Cloning site Blue=ORF Green=Tags(s)

TTTTGTAATACGACTCACTATAGGGCGGCCGGGAATTCGTCGACTGGATCCGGTACCGAGGAGATCTGCC
GCC**CGATCGCC**

ATGAGGGGCGGAACGCCTGGGCGCCACTCTGCCTGCTGCTGGCTGCCGCCACCCAGCTCTCGGGCAGC
AGTCCCCAGAGACCTGTTTTACATGTGGTGGCATTCTTACTGGAGAGCTGGATTTATTGGCAGTGA
AGGTTTTCTGGAGTGTACCCTCCAATAGCAAATGACTTGGAAATCACAGTCCCGAAGGAAAAGTA
GTCGTTCTCAATTTCCGATTCATAGACCTCGAGAGTGACAACCTGTGCCGCTATGACTTTGTGGATGTG
ACAATGGCCATGCCAATGGCCAGCGCATTGGCCGCTTCTGTGGCACTTTCCGGCCTGGAGCCCTTGTGTC
CAGTGGCAACAAGATGATGGTGCAGATGATTTCTGATGCCAACACAGCTGGCAATGGCTTATGGCCATG
TTCTCCGCTGCTGAACCAACGAAAGAGGGGATCAGTATTGTGGAGGACTCCTTGACAGACCTTCCGGCT
CTTTTAAACCCCAACTGGCCAGACCGGGATTACCCTGCAGGAGTCACTTGTGTGGCACATTGTAGC
CCCAAAGAATCAGCTTATAGAATTAAGTTTGAGAAGTTTGATGTGGAGCGAGATAACTACTGCCGATAT
GATTATGTGGCTGTGTTAATGGCGGGGAAGTCAACGATGCTAGAAGAATTGGAAAGTATTGTGGTGATA
GTCCACCTGCGCAATTGTGCTGAGAGAAATGAACCTTCTTATTCAGTTTTATCAGACTTAAGTTTAACT
TGCAGATGGGTTTATTGGTCACTACATATTCAGGCCAAAAAACTGCCTACAACACAGAACAGCCCTGTC
ACCACCACATCCCTGTAAACCACGGGTTTAAAACCCACCGTGGCCTTGTGTCAACAAAAGTGTAGACGGA
CGGGGACTCTGGAGGGCAATTATTGTTCAAGTGACTTTGTATTAGCCGGCACTGTTATCACAACCATCAC
TCGCGATGGGAGTTTGCACGCCACAGTCTCGATCATCAACATCTACAAAGAGGAAATTTGGCGATTTCAG
CAGGCGGGCAAGAACATGAGTGCCAGGCTGACTGTCGTCTGCAAGCAGTGCCCTCTCCTCAGAAGAGGTC
TAAATTACATTATTATGGGCCAAGTAGGTGAAGATGGGCGAGGCAAAATCATGCCAACAGCTTTATCAT
GATGTTCAAGACCAAGAATCAGAAGCTCCTGGATGCCTTAAAAATAAGCAATGT

ACGCGTACGCGGCCGCTCGAGCAGAACTCATCTCAGAAGAGGATCTGGCAGCAATGATATCCTGGATT
ACAAGGATGACGACGATAAGGTTTAA



[View online >](#)

Protein Sequence: >RC224022 representing NM_013363
Red=Cloning site Green=Tags(s)

MRGANAWAPLCLLLAAATQLSRQQSPERPVFTCGGILTGESGFIGSEGFPGVYPPNSKCTWKITVPEGKV
 VVLNFRFIDLESDNLCRYDFVDVYNGHANGQRIGRFCGTFRPGALVSSGNKMMVQMISDANTAGNGFMAM
 FSAAPNERGDQYCGLLDRPSGSFKTPNWPDRDYPAGVTCVWHIVAPKNQLIELKFEKFDVERDNYCRY
 DYVAVFNGGEVNDARRIGKYCGDSPAPIVSERNELLIQFLSDLSLTADGFIGHYIFRPKKLPTTTEQPV
 TTTFPVTTGLKPTVALCQQKCRRTGTLEGNYSDFVLAGTVITITRDGSLHATVSIINIYKEGNLAIQ
 QAGKNMSARLTVVCKQCPLLRGLNYIIMGQVGEDGRGKIMPNSFIMMFKTKNQKLLDALKNKQC

TRTRPLEQKLISEEDLAANDILDYKDDDDKV

Chromatograms: https://cdn.origene.com/chromatograms/mk6598_a08.zip

Restriction Sites: SgfI-MluI

Cloning Scheme:



ACCN: NM_013363

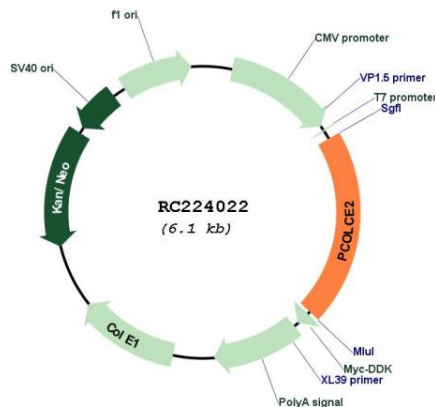
ORF Size: 1245 bp

OTI Disclaimer: Due to the inherent nature of this plasmid, standard methods to replicate additional amounts of DNA in E. coli are highly likely to result in mutations and/or rearrangements. Therefore, OriGene does not guarantee the capability to replicate this plasmid DNA. Additional amounts of DNA can be purchased from OriGene with batch-specific, full-sequence verification at a reduced cost. Please contact our customer care team at custsupport@origene.com or by calling 301.340.3188 option 3 for pricing and delivery.

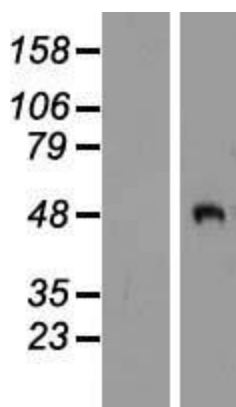
The molecular sequence of this clone aligns with the gene accession number as a point of reference only. However, individual transcript sequences of the same gene can differ through naturally occurring variations (e.g. polymorphisms), each with its own valid existence. This clone is substantially in agreement with the reference, but a complete review of all prevailing variants is recommended prior to use. [More info](#)

OTI Annotation:	This clone was engineered to express the complete ORF with an expression tag. Expression varies depending on the nature of the gene.
Components:	The ORF clone is ion-exchange column purified and shipped in a 2D barcoded Matrix tube containing 10ug of transfection-ready, dried plasmid DNA (reconstitute with 100 ul of water).
Reconstitution Method:	<ol style="list-style-type: none"> 1. Centrifuge at 5,000xg for 5min. 2. Carefully open the tube and add 100ul of sterile water to dissolve the DNA. 3. Close the tube and incubate for 10 minutes at room temperature. 4. Briefly vortex the tube and then do a quick spin (less than 5000xg) to concentrate the liquid at the bottom. 5. Store the suspended plasmid at -20°C. The DNA is stable for at least one year from date of shipping when stored at -20°C.
RefSeq:	<u>NM_013363.4</u>
RefSeq Size:	1988 bp
RefSeq ORF:	1248 bp
Locus ID:	26577
UniProt ID:	<u>Q9UKZ9</u>
Cytogenetics:	3q23
Domains:	CUB, NTR
Protein Families:	Secreted Protein
MW:	45.5 kDa
Gene Summary:	Binds to the C-terminal propeptide of types I and II procollagens and may enhance the cleavage of that propeptide by BMP1.[UniProtKB/Swiss-Prot Function]

Product images:



Circular map for RC224022



Western blot validation of overexpression lysate (Cat# [LY415666]) using anti-DDK antibody (Cat# [TA50011-100]). Left: Cell lysates from untransfected HEK293T cells; Right: Cell lysates from HEK293T cells transfected with RC224022 using transfection reagent MegaTran 2.0 (Cat# [TT210002]).