

Product datasheet for **RC224021**

CD252 (TNFSF4) (NM_003326) Human Tagged ORF Clone

Product data:

Product Type: Expression Plasmids
Product Name: CD252 (TNFSF4) (NM_003326) Human Tagged ORF Clone
Tag: Myc-DDK
Symbol: CD252
Synonyms: CD134L; CD252; GP34; OX-40L; OX40L; TNLG2B; TXGP1
Mammalian Cell Selection: Neomycin
Vector: pCMV6-Entry (PS100001)
E. coli Selection: Kanamycin (25 ug/mL)
ORF Nucleotide Sequence: >RC224021 representing NM_003326
Red=Cloning site Blue=ORF Green=Tags(s)

TTTTGTAATACGACTCACTATAGGGCGGCCGGAATTCGTCGACTGGATCCGGTACCGAGGAGATCTGCC
GCC**CGGATCGCC**

ATGGAAAGGGTCCAACCCCTGGAAGAGAATGTGGGAAATGCAGCCAGGCCAAGATTCGAGAGGAACAAGC
TATTGCTGGTGGCCTCTGTAATTCAGGGACTGGGGCTGCTCTGTGCTTCACCTACATCTGCCTGCACTT
CTCTGCTCTTCAGGTATCACATCGGTATCCTCGAATTCAAAGTATCAAAGTACAATTTACCGAATATAAG
AAGGAGAAAGGTTTCATCCTCACTTCCAAAAGGAGGATGAAATCATGAAGGTGCAGAACAACCTCAGTCA
TCATCAACTGTGATGGGTTTTATCTCATCTCCCTGAAGGGCTACTTCTCCAGGAAGTCAACATTAGCCT
TCATTACCAGAAGGATGAGGAGCCCTTCCAAGTGAAGAAGGTCAGGTCTGTCAACTCCTTGATGGTG
GCCTCTCTGACTTACAAAGACAAAGTCTACTTGAATGTGACCACTGACAATACCTCCCTGGATGACTTCC
ATGTGAATGGCGGAGAACTGATTCTTATCCATCAAATCTGGTGAATTCTGTGTCCTT

ACGCGTACGCGGCCGCTCGAGCAGAACTCATCTCAGAAGAGGATCTGGCAGCAAATGATATCCTGGATT
ACAAGGATGACGACGATAAGGTTTAA

Protein Sequence: >RC224021 representing NM_003326
Red=Cloning site Green=Tags(s)
MERVQPLEENVGNAARPRFRFNKLLLVASVIQGLGLLLCFTYICLHFSALQVSHRYPRIQSIKVQFTEYK
KEKGFILTSQKEDIKQVQNSVIINCDGFYLISLKGYSQEVNISLHYQKDEEPLFQLKKVRSVNSLMV
ASLTYKDKVYLVNTDNTSLDDFHVNGGELILIHQNPGEFCVL

TRTRPLEQKLISEEDLAANDILDYKDDDDKV

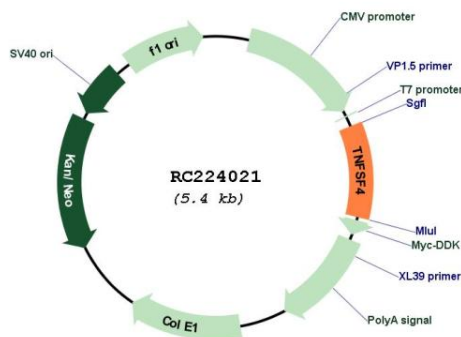
Chromatograms: https://cdn.origene.com/chromatograms/mk6114_d06.zip



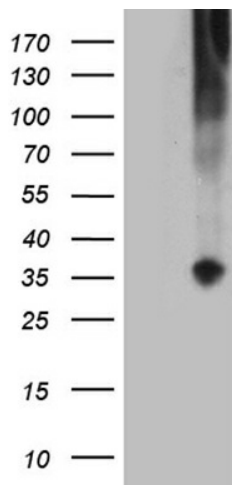
[View online »](#)

Locus ID: 7292
UniProt ID: [P23510](#)
Cytogenetics: 1q25.1
Protein Families: Druggable Genome, Transmembrane
Protein Pathways: Cytokine-cytokine receptor interaction
MW: 20.9 kDa
Gene Summary: This gene encodes a cytokine of the tumor necrosis factor (TNF) ligand family. The encoded protein functions in T cell antigen-presenting cell (APC) interactions and mediates adhesion of activated T cells to endothelial cells. Polymorphisms in this gene have been associated with Sjogren's syndrome and systemic lupus erythematosus. Alternative splicing results in multiple transcript variants. [provided by RefSeq, Jul 2014]

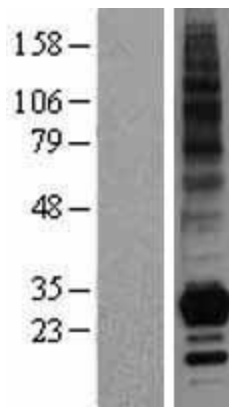
Product images:



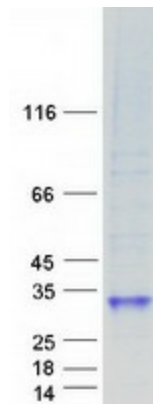
Circular map for RC224021



HEK293T cells were transfected with the pCMV6-ENTRY control (Cat# [PS100001], Left lane) or pCMV6-ENTRY TNFSF4 (Cat# RC224021, Right lane) cDNA for 48 hrs and lysed. Equivalent amounts of cell lysates (5 ug per lane) were separated by SDS-PAGE and immunoblotted with anti-TNFSF4 (Cat# [TA806738]). Positive lysates [LY401143] (100ug) and [LC401143] (20ug) can be purchased separately from OriGene.



Western blot validation of overexpression lysate (Cat# [LY401143]) using anti-DDK antibody (Cat# [TA50011-100]). Left: Cell lysates from untransfected HEK293T cells; Right: Cell lysates from HEK293T cells transfected with RC224021 using transfection reagent MegaTran 2.0 (Cat# [TT210002]).



Coomassie blue staining of purified TNFSF4 protein (Cat# [TP324021]). The protein was produced from HEK293T cells transfected with TNFSF4 cDNA clone (Cat# RC224021) using MegaTran 2.0 (Cat# [TT210002]).