

Product datasheet for RC224011

PEDS1 (NM_199129) Human Tagged ORF Clone

Product data:

Product Type: Expression Plasmids
Product Name: PEDS1 (NM_199129) Human Tagged ORF Clone
Tag: Myc-DDK
Symbol: PEDS1
Synonyms: CarF; KUA; TMEM189
Mammalian Cell Selection: Neomycin
Vector: pCMV6-Entry (PS100001)
E. coli Selection: Kanamycin (25 ug/mL)
ORF Nucleotide Sequence: >RC224011 representing NM_199129
 Red=Cloning site Blue=ORF Green=Tags(s)

TTTTGTAATACGACTCACTATAGGGCGCCGGGAATTCGTCGACTGGATCCGGTACCGAGGAGATCTGCC
 GCC**CGATCGCC**

ATGGCGGGCGCCGAGGACTGGCCGGCCAGCAGCTGGAGCTGGACGAGGACGAGGCGTCTTGTGGCCGT
 GGGGCGCGCAGCACGCCGGGGCCCGGAGCTGGCTGCGCTCTACTCGCCAGGCAAGCGCCTCCAGGAGTG
 GTGCTCTGTGATCCTGTGCTTCAGCCTCATCGCCACAACCTGGTCCATCTCTGCTGCTGGCCCGCTGG
 GAGGACACACCCCTCGTCATACTCGGTGTTGTTGCAGGGGCTCTCATTGCTGACTTCTTGTCTGGCCTGG
 TACTGGGGTGTGACACATGGGGCTCTGTGGAGCTGCCATTGTGGGAAGGCTTTCATCCGACCTT
 CCGGGAGCACCATTGACCCGACAGCTATCACACGGCAGACTTCATCGAGACCAACGGGGACAAGTGC
 CTGGTGACACTGCTGCCGCTGCTAAACATGGCCTACAAGTTCCGCACCCACAGCCCTGAAGCCCTGGAGC
 AGCTATACCCCTGGGAGTGCTTCGTCTTCTGCCTGATCATCTTCGGCACCTTCACCAACCAGATCCACAA
 GTGGTCGCACACGTACTTGGGCTGCCACGCTGGGTACCCTCCTGCAGGACTGGCATGTATCTGCTGCCA
 CGTAAACACCATCGCATCCACCAGTCTCACCCACGAGACCTACTTCTGCATCACCACAGGCTGGCTCA
 ACTACCTCTGGAGAAGATAGGCTTCTGGCGACGCTGGAGACCTCATCCAGGGCCTGACGGGCGAGAA
 GCCTCGGGCAGATGACATGAAATGGGCCAGAAGATCAA

ACGCGTACGCGGCCGCTCGAGCAGAAACTCATCTCAGAAGAGGATCTGGCAGCAAATGATATCCTGGATT
 ACAAGGATGACGACGATAAGGTTTAA



[View online »](#)

Protein Sequence: >RC224011 representing NM_199129
Red=Cloning site Green=Tags(s)

MAGAEDWPGQLELDEDEASCCRWGAQHAGARELAALYSPGKRLQEWCSVILCFSLIAHNLVHLLLLARW
 EDTPLVILGVVAGALIADFLSGLVHWGADTWGSVELPIVGKAFIRPFREHHIDPTAIRHDFIETNGDNC
 LVTLPLLNMAYKFRTHSPEALEQLYPWECFVFLCIIFGTFTNQIHKWSHTYFGLPRWVTLQDWHVILP
 RKHHRIHHVSPHETYFCITTTGWLNYPLEKIGFWRRLEDLIQGLTGEKPRADDMKWAQKIK

TRTRPLEQKLISEEDLAANDILDYKDDDDKV

Chromatograms: https://cdn.origene.com/chromatograms/mk6108_e04.zip

Restriction Sites: SgfI-MluI

Cloning Scheme:

Cloning sites used for ORF Shuttling:



* The last codon before the Stop codon of the ORF

ACCN: NM_199129

ORF Size: 810 bp

OTI Disclaimer: The molecular sequence of this clone aligns with the gene accession number as a point of reference only. However, individual transcript sequences of the same gene can differ through naturally occurring variations (e.g. polymorphisms), each with its own valid existence. This clone is substantially in agreement with the reference, but a complete review of all prevailing variants is recommended prior to use. [More info](#)

OTI Annotation: This clone was engineered to express the complete ORF with an expression tag. Expression varies depending on the nature of the gene.

Components: The ORF clone is ion-exchange column purified and shipped in a 2D barcoded Matrix tube containing 10ug of transfection-ready, dried plasmid DNA (reconstitute with 100 ul of water).

Reconstitution Method:

1. Centrifuge at 5,000xg for 5min.
2. Carefully open the tube and add 100ul of sterile water to dissolve the DNA.
3. Close the tube and incubate for 10 minutes at room temperature.
4. Briefly vortex the tube and then do a quick spin (less than 5000xg) to concentrate the liquid at the bottom.
5. Store the suspended plasmid at -20°C. The DNA is stable for at least one year from date of shipping when stored at -20°C.

RefSeq: [NM_199129.3](#)

RefSeq Size: 2187 bp

RefSeq ORF: 813 bp

Locus ID: 387521

UniProt ID: [A5PLL7](#)

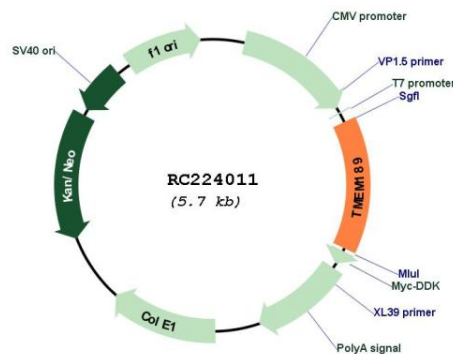
Cytogenetics: 20q13.13

Protein Families: Transmembrane

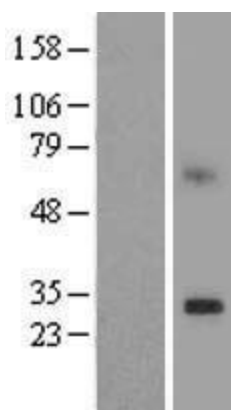
MW: 31 kDa

Gene Summary: Co-transcription of this gene and the neighboring downstream gene (ubiquitin-conjugating enzyme E2 variant 1) generates a rare read-through transcript, which encodes a fusion protein comprised of sequence sharing identity with each individual gene product. The protein encoded by this individual gene lacks a UEV1 domain but includes three transmembrane regions. Alternative splicing results in multiple transcript variants. [provided by RefSeq, Jun 2009]

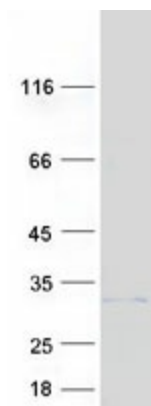
Product images:



Circular map for RC224011



Western blot validation of overexpression lysate (Cat# [LY404743]) using anti-DDK antibody (Cat# [TA50011-100]). Left: Cell lysates from untransfected HEK293T cells; Right: Cell lysates from HEK293T cells transfected with RC224011 using transfection reagent MegaTran 2.0 (Cat# [TT210002]).



Coomassie blue staining of purified TMEM189 protein (Cat# [TP324011]). The protein was produced from HEK293T cells transfected with TMEM189 cDNA clone (Cat# RC224011) using MegaTran 2.0 (Cat# [TT210002]).