

Product datasheet for **RC224009**

LEC (CCL16) (NM_004590) Human Tagged ORF Clone

Product data:

Product Type: Expression Plasmids
Product Name: LEC (CCL16) (NM_004590) Human Tagged ORF Clone
Tag: Myc-DDK
Symbol: LEC
Synonyms: CKb12; HCC-4; ILINCK; LCC-1; LEC; LMC; Mtn-1; NCC-4; NCC4; SCYA16; SCYL4
Mammalian Cell Selection: Neomycin
Vector: pCMV6-Entry (PS100001)
E. coli Selection: Kanamycin (25 ug/mL)
ORF Nucleotide Sequence: >RC224009 representing NM_004590
Red=Cloning site Blue=ORF Green=Tags(s)

TTTTGTAATACGACTCACTATAGGGCGCCGGGAATTCGTCGACTGGATCCGGTACCGAGGAGATCTGCC
GCC**CGATCGCC**

ATGAAGGTCTCCGAGGCTGCCCTGTCTCTCCTTGTCTCCTATCCTTATCATTACTCGGCTTCTCGCAGCC
AGCCAAAAGTTCCTGAGTGGGTGAACACCCCATCCACCTGCTGCCTGAAGTATTATGAGAAAAGTGTTC
AAGGAGACTAGTGGTGGGATACAGAAAGGCCCTCACTGTACCTGCCAGCAATCATCTTCGTCACCAAG
AGGAACCGAGAAGTCTGCACCAACCCCAATGACGACTGGGTCCAAGAGTACATCAAGGATCCCACTAC
CTTTGCTGCCTACCAGGAAGTGTCCACGGTAAAATTATTACAGCAAAGATGGTCAACCCAGCTCCT
CACTCCAG

ACGCGTACGCGGCCGCTCGAGCAGAACTCATCTCAGAAGAGGATCTGGCAGCAAATGATATCCTGGATT
ACAAGGATGACGACGATAAGGTTTAA

Protein Sequence: >RC224009 representing NM_004590
Red=Cloning site Green=Tags(s)
MKVSEALSLLVLILIIITSASRSQPKVPEWVNTPTCCLKYEKVLPRLVVGYRKALNCHLPAIIFVTK
RNREVCTNPDDWVQEYIKDPNLPLLPTRNLSTVKIITAKNGQPQLNSQ

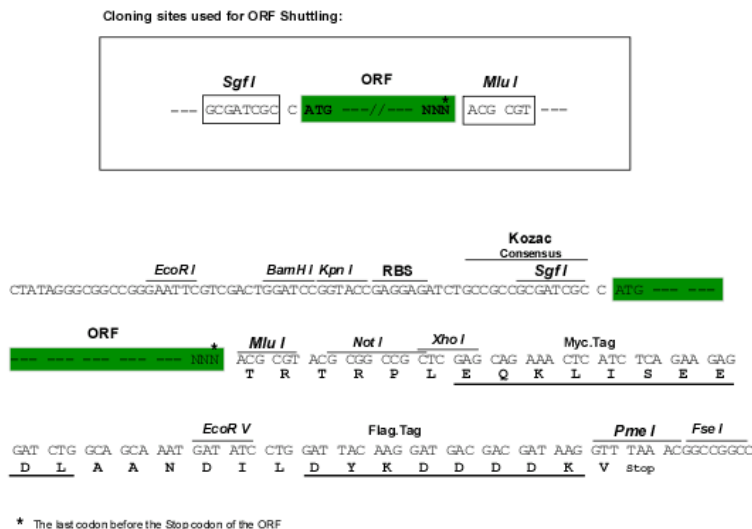
TRTRPLEQKLISEEDLAANDILDYKDDDDKV

Chromatograms: https://cdn.origene.com/chromatograms/mk6046_d11.zip

Restriction Sites: SgfI-MluI



[View online »](#)

Cloning Scheme:


ACCN: NM_004590

ORF Size: 360 bp

OTI Disclaimer: The molecular sequence of this clone aligns with the gene accession number as a point of reference only. However, individual transcript sequences of the same gene can differ through naturally occurring variations (e.g. polymorphisms), each with its own valid existence. This clone is substantially in agreement with the reference, but a complete review of all prevailing variants is recommended prior to use. [More info](#)

OTI Annotation: This clone was engineered to express the complete ORF with an expression tag. Expression varies depending on the nature of the gene.

Components: The ORF clone is ion-exchange column purified and shipped in a 2D barcoded Matrix tube containing 10ug of transfection-ready, dried plasmid DNA (reconstitute with 100 ul of water).

- Reconstitution Method:**
1. Centrifuge at 5,000xg for 5min.
 2. Carefully open the tube and add 100ul of sterile water to dissolve the DNA.
 3. Close the tube and incubate for 10 minutes at room temperature.
 4. Briefly vortex the tube and then do a quick spin (less than 5000xg) to concentrate the liquid at the bottom.
 5. Store the suspended plasmid at -20°C. The DNA is stable for at least one year from date of shipping when stored at -20°C.

RefSeq: [NM_004590.4](#)

RefSeq Size: 1497 bp

RefSeq ORF: 363 bp

Locus ID: 6360

UniProt ID: [O15467](#)

Cytogenetics: 17q12

Domains: IL8

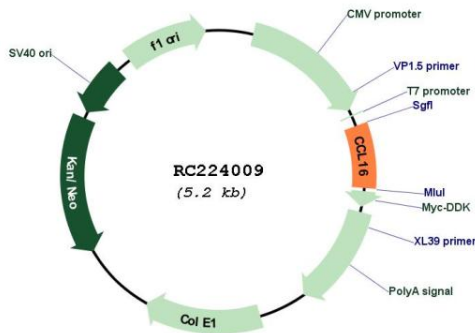
Protein Families: Druggable Genome, Secreted Protein

Protein Pathways: Chemokine signaling pathway, Cytokine-cytokine receptor interaction

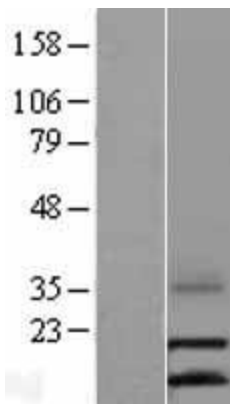
MW: 13.6 kDa

Gene Summary: This gene is one of several cytokine genes clustered on the q-arm of chromosome 17. Cytokines are a family of secreted proteins involved in immunoregulatory and inflammatory processes. The CC cytokines are proteins characterized by two adjacent cysteines. The cytokine encoded by this gene displays chemotactic activity for lymphocytes and monocytes but not for neutrophils. This cytokine also shows a potent myelosuppressive activity and suppresses proliferation of myeloid progenitor cells. The expression of this gene is upregulated by IL-10. [provided by RefSeq, Jul 2008]

Product images:



Circular map for RC224009



Western blot validation of overexpression lysate (Cat# [LY401467]) using anti-DDK antibody (Cat# [TA50011-100]). Left: Cell lysates from untransfected HEK293T cells; Right: Cell lysates from HEK293T cells transfected with RC224009 using transfection reagent MegaTran 2.0 (Cat# [TT210002]).