

## Product datasheet for RC224006

### CACHD1 (NM\_020925) Human Tagged ORF Clone

#### Product data:

Product Type:	Expression Plasmids
Product Name:	CACHD1 (NM_020925) Human Tagged ORF Clone
Tag:	Myc-DDK
Symbol:	CACHD1
Mammalian Cell Selection:	Neomycin
Vector:	pCMV6-Entry (PS100001)
E. coli Selection:	Kanamycin (25 ug/mL)
ORF Nucleotide Sequence:	>RC224006 representing NM_020925 Red=Cloning site Blue=ORF Green=Tags(s)

TTTTGTAATACGACTCACTATAGGGCGGCCGGAATTCGTCGACTGGATCCGGTACCGAGGAGATCTGCC  
GCCCGATCGCC

ATGCGGAGGCTGGCGCCGAGGAGCTGGGGTCGTCACCATGCAGCGGATATTCAACTCCTTTGTTTACA  
CTGAGAAAATCTCAAATGGAGAAAGTGAAGTACAGCAGCTAGCCAAAAAATCCGAGAGAAGTTCAACCG  
TTACTTGGATGTGGTCAATCGGAACAAGCAAGTTGTAGAAGCATCCTATACGGCTCACCTAACCTCTCCC  
CTAACTGCAATTAAGACTGCTGTACTATCCCACCTTCCATGATGGAATTCGATGGGAACCTTAATACCA  
ATGTGTCTAGAACAATTAGTTGTGATCGACTTTCTACTACTGTTAATAGCCGGCCTTCAATCCAGGACG  
AGACTTAAATTCAGTTCTTGCAGACAACCTGAAATCCAACCTGGAATTAAGTGGCAATATTTCAGTTCA  
GAAGAAGGAATTTTCACTGTTTTCCAGCACACAAGTTCCGGTGTAAAGGCGAGCTACGAACCCGAGTA  
GACCCATCTACGTCTCTACAGTCCGGCCGAGTCAAAGCACATAGTAGTATTCTGGACCACGGGCTTC  
AGTCACAGACTCAGCTTCAAGATTGCCAAGGACGCTGCTCAGGTCATCCTCAGCGCCATCGATGAACAT  
GACAAGATTTCTGTGTTAACTGTGGCAGATACCGTCCGGACTTGCTCACTAGACCAGTGTATAAGACCT  
TCTTGTCTCCAGCCACCAGTGAGACAAAAGGAAAATGTCCACCTTTGTTAGCAGCGTGAAGTCTCAGA  
CAGTCTACCCAGCACGAGTGGATTCCAAAAGGCATTTAGCTGATTGGAAGTACAAACAATAACACA  
AAGTTCCAAGCAAATACAGACATGGTCATATTTACCTGTCAGCTGGCATTACATCAAAGGACTCTTCGG  
AAGAAGATAAAAAGCGACTCTCCAAGTCATCAATGAAGAAAATAGCTTTCTAAACAACCTGTAAATGAT  
TCTCACCTATGCCCTCATGAACGATGGGGTACTGGTTTGAAGAGCTGGCTTTTCTGAGGGATCTAGCT  
GAACAGAATTCAGGGAAGTACGGTGTGCCAGACCGGATGGCCTTGCTGTGATTAAGGGCAGCATGATGG  
TGCTGAATCAGTTGAGCAACCTGGAGACCACAGTGGGCAGGTTCTACACAAACCTTCCCAACCGGATGAT  
TGATGAAGCCGTCTTCAAGCTGCCCTTCTGTGATGAGATGGGAGATGGTTTGATAATGACTGTGAGTAA  
CCCTGTTATTTGGAAACCTACTTCTGGGAATTTAGTGGTGGACGTGAATCTGGCTTACATTCTTGAAG  
ACGTGACGTATTACCAAGACTCTTTGGCTTCTATACTTTCTCATAGACGACAAAGGATATACACTTAT  
GCACCATCTCTTACCAGGCCATATTTATTGTCAGAGCCCCACTTCACTACTGACATCATACATTATGAA  
AATATTTCAAATTTGAATTAGTTGCGGAAAATATCCTAAGCCTCCCTCTGGGCAGCCAGATTATCGCAG  
TCCTGTGAACCTATCCCTGTCTTGGCACATAAACAAGCTGAGAGAACTGGAAAGGAAGCCTACATGT



[View online »](#)

TAGCTATGCCTGGAAGATGGTACAAGACACTTCCTTTATTCTGTGTATTGTGGTGATACAACCAGAAATA  
CCTGTGAAACAACCTGAAGAACCTCAACACTGTTCCCAGCAGCAAGCTGCTGTACCACCGGCTGGATCTCC  
TTGGCCAGCCCAGTGCTTGCCCTCCTTCAAACAGCTGGCAACCCCTAGAAAGTCCCACCATCATGCTGTC  
TGCTGGCAGCTTTTCTCCCCCTATGAGCACCTCAGCCAGCCAGAGACAAAGCGCATGGTAGAGCACTAC  
ACCGCCTATCTCAGCGACAACACCCGCCTCATTGCTAACCCGGGCCTCAAATTCTCTGTGAGAAATGAAG  
TAATGGCTACCAGCCACGTCACAGATGAATGGATGACACAAATGGAAATGAGTAGCCTGAACACTTACAT  
TGTCGGCGTTACATAGCAACACCCAATGGCGTCTCAGAAATTTATCCTGGTTCCTCATGGACAAAGCA  
TTTGATCCCACTAGGAGACAATGGTATCTCCATGCAGTAGCTAATCCAGGTTGATTTCTTTGACTGGTC  
CTTACTTAGATGTTGGAGGAGCTGGTTATGTTGTGACAATCAGTCACACAATTCATTTCATCCAGTACACA  
GCTGTCTTCTGGGCACACTGTGGCTGTGATGGGCATTGACTTCACACTCAGATACTTCTACAAAAGTTCTG  
ATGGACCTATTACCTGTCTGTAACCAAGATGGTGGCAACAAAATAAGGTGCTTCATAATGGAGGACAGGG  
GTTATCTGGTGGCGACCCGACTCTCATCGACCCAAAGGACATGCACCTGTGGAGCAGCAGCACATCAC  
CCACAAGGAGCCCTGGTAGCAAATGATATCCTCAACCACCCAACTTTGTAAGAAAAACCTGTGCAAC  
AGCTTCAGTGACAGAACGGTCCAGAGGTTTTATAAATTC AACACCAGCCTTGCGGGGATTTGACGAACC  
TTGTGCATGGCAGCCACTGTTCCAAATACAGATTAGCAAGGATCCAGGAACCAACGCGTTTGTGGCAT  
TGCAACGAAACCTGCGACTCTCTTGCTTCTGTGCTGCAGCATGGTGGACCGACTCTGTCTCACTGT  
CACCGAATGGAACAAAATGAATGTGAATGTCTTGTGAGTGCCCTCTAGAGGTCAATGAGTGCACCTGGCA  
ACCTCACCAATGCAGAGAACCGAAACCCAGCTGCGAGGTCCACCAGGAGCCGGTGACATACACAGCTAT  
TGACCCTGGCCTGCAAGATGCTCTTACCAGTGTGTAACAGCAGGTGCAGTCAGAGGCTGGAAAGTGGG  
GACTGTTTTGGGGTGCTGGATTGTGAATGGTGCATGGTGGACAGTGATGGAAAGACTCACCTGGACAAAC  
CCTACTGTGCCCCCAGAAAGAATGCTTCGGGGGATTGTGGGAGCCAAAAGTCCCTACGTTGATGACAT  
GGGAGCAATAGGTGATGAGGTGATCACATTAACATGATTAAGCGCCCTGTGGTCCCTGTGGCTGGA  
GCCATCAGCATATGTCTCTTCTTGCTGCCAAGAATGTCAAGTGCATGTCCAACCTGGAGAATGACAG  
AGATGAAAGGGACGACGACAGCCACGAAGACAGAGGCATCATCAGCAACTCGGTTTATAGCTGCGGTC  
ATCGAACGACATGCACACAGTCCAGAAAGAAGCGCCGCTACTGGGGTCGATCAGGAACAGAAAGTGATC  
ATGGTTACAGCACCATGAGCCACAGGAGGACAGTGAAAATCCTCCATGCAACAATGACCCCTTGTGAGC  
CGGGTTCGATGTGGAAACCATGATGAGGACTTAGACCTGGATACCCCCCTCAGACTGCTGCCCTACTA  
AGTCACAAGTTCACCACTACCGGTACACCACCCTACACTTCATCATAGCCACCCTTACAGGCGGCCG  
TCACGGTACACTGTGATGCAGAATGC

AGCGGACCGACGCGTACGCGGCCGCTCGAGCAGAACTCATCTCAGAAGAGGATCTGGCAGCAAATGATATCC  
TGGATTACAAGGATGACGACGATAAGGTTTAA

**Protein Sequence:** >RC224006 representing NM\_020925  
 Red=Cloning site Green=Tags(s)

```

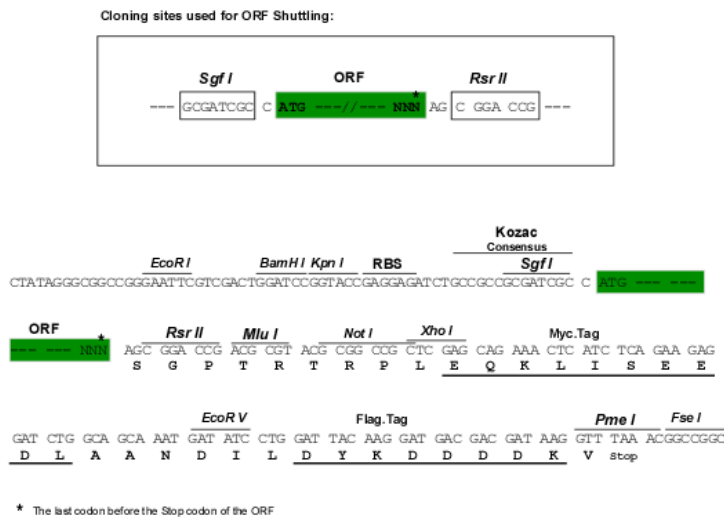
MRRLAAEELGVVTMQRIFNSFVYTEKISNGESEVQQLAKKIREKFNRYLDVVNRNKQVVEASYTAHLTSP
LTAIQDCCTIPPSMMEFDGNFNTNVSRTISCDRLSTTVNSRAFNPGRDLNSVLADNLKSNPGIKWQYFSS
EEGIFTVFPAHKFRCKGSYEHRSRPIYVSTVRPQSKHIVVILDHGASVTDQLQIAKDAQVILSAIDEH
DKISVLTVADTVRTCSLDQCYKTFLEPATSETKRRKMSTFVSSVKSSDSPTOHAVGFQKAFQLIRSTNNNT
KFQANTDMVIIYLSAGITSKDSSEEDKKATLQVINEENSFLNNSVMILTYALMNDGVTGLKELAFRLDLA
EQNSGKYGVPDRMALPVIKGSMMLNQLSNLETTVGRFYTNLPNRMIDEAVFSLPFSDEMGDGLIMTVSK
PCYFGNLLLGIIVGVDVNLAYILEDVYYQDSLASYTFLIDDKGYTLMHPSLTRPYLLSEPLHTDIIHYE
NIPKFELVRQNILSLPLGSQIIAVPNSSLSWHINKLRETGKEAYNVSYAWKMQDTSFILCIVVIQPEI
PVKQLKNLNTVPSSKLLYHRLDLLGQPSACLHFKQLATLESPTIMLSAGSFSSPYEHLSPQETKRMVEHY
TAYLSDNTRLIANPGLKFSVRNEVMATSHVTDEWMTQMEMSSLNTYIVRRYIATPNGVLRIPYGLMDKA
FDPTRRQWYLHAVANPGLISLTGPYLDVGGAGYVVTISHTIHSSSTQLSSGHTVAVMGIDFTLRYFYKVL
MDLLPVCNQDGGNKIRCFIMEDRGYLAHPTLIDPKGHAPVEQQHITHKEPLVANDILNHPNFVKKNLN
SFSDRTVQRFYKFNLSLADGLTNLVHSHCSKYRLARIPGTNAFVGI VNETCDSLAF CACSMVDRLCLNC
HRMEQNECEPCCEPLEVNECTGNLTNAENRNPSCVHQEPVITYAIDPGLQDALHQCVCVNSRCSQRLES
DCFGVLDCEWCMVDSDGKTHLDKPYCAPQKECFGGIVGAKSPYVDDMGAIGDEVITLNMIKSAPVGPVAG
GIMGCIMVLVLAVYAYRHQIHRRSHQHMSPLAAQEMSVRMSNLENDERDDSDHEDRGIISNTRFIAAV
IERHAHSPERRRRYWGRSGTESDHGYSTMSPQEDSENPPCNDPLSAGVDVGNHDEDLDDTPPQTAAAL
SHKFFHYRSHHPTLHSHHLQAAVTVHTVDAEC
  
```

SGP TRRRLEQKLI SEEDLAANDILDYKDDDDKV

**Chromatograms:** [https://cdn.origene.com/chromatograms/mk8010\\_e05.zip](https://cdn.origene.com/chromatograms/mk8010_e05.zip)

**Restriction Sites:** SgfI-RsrII

**Cloning Scheme:**

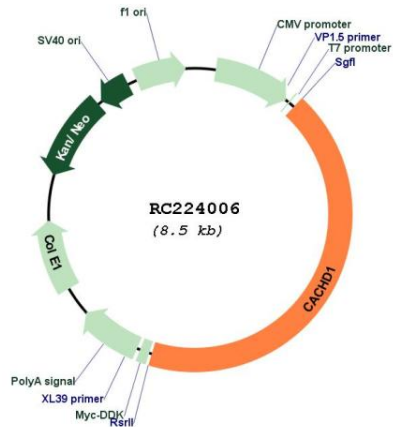


**ACCN:** NM\_020925

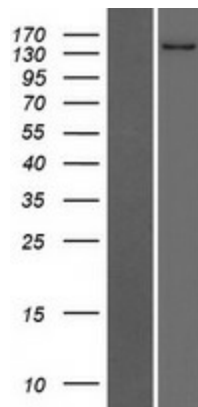
**ORF Size:** 3669 bp

<b>OTI Disclaimer:</b>	The molecular sequence of this clone aligns with the gene accession number as a point of reference only. However, individual transcript sequences of the same gene can differ through naturally occurring variations (e.g. polymorphisms), each with its own valid existence. This clone is substantially in agreement with the reference, but a complete review of all prevailing variants is recommended prior to use. <a href="#">More info</a>
<b>OTI Annotation:</b>	This clone was engineered to express the complete ORF with an expression tag. Expression varies depending on the nature of the gene.
<b>Components:</b>	The ORF clone is ion-exchange column purified and shipped in a 2D barcoded Matrix tube containing 10ug of transfection-ready, dried plasmid DNA (reconstitute with 100 ul of water).
<b>Reconstitution Method:</b>	<ol style="list-style-type: none"> <li>1. Centrifuge at 5,000xg for 5min.</li> <li>2. Carefully open the tube and add 100ul of sterile water to dissolve the DNA.</li> <li>3. Close the tube and incubate for 10 minutes at room temperature.</li> <li>4. Briefly vortex the tube and then do a quick spin (less than 5000xg) to concentrate the liquid at the bottom.</li> <li>5. Store the suspended plasmid at -20°C. The DNA is stable for at least one year from date of shipping when stored at -20°C.</li> </ol>
<b>RefSeq:</b>	<a href="#">NM_020925.2</a> , <a href="#">NP_065976.2</a>
<b>RefSeq Size:</b>	5274 bp
<b>RefSeq ORF:</b>	3825 bp
<b>Locus ID:</b>	57685
<b>UniProt ID:</b>	<a href="#">Q5VU97</a>
<b>Cytogenetics:</b>	1p31.3
<b>Protein Families:</b>	Druggable Genome, Transmembrane
<b>MW:</b>	136.5 kDa
<b>Gene Summary:</b>	May regulate voltage-dependent calcium channels.[UniProtKB/Swiss-Prot Function]

Product images:



Circular map for RC224006



Western blot validation of overexpression lysate (Cat# [LY412223]) using anti-DDK antibody (Cat# [TA50011-100]). Left: Cell lysates from untransfected HEK293T cells; Right: Cell lysates from HEK293T cells transfected with RC224006 using transfection reagent MegaTran 2.0 (Cat# [TT210002]).