

Product datasheet for RC224001

NCOA1 (NM_147233) Human Tagged ORF Clone

Product data:

Product Type:	Expression Plasmids
Product Name:	NCOA1 (NM_147233) Human Tagged ORF Clone
Tag:	Myc-DDK
Symbol:	NCOA1
Synonyms:	bHLHe42; bHLHe74; F-SRC-1; KAT13A; RIP160; SRC1
Vector:	pCMV6-Entry (PS100001)
E. coli Selection:	Kanamycin (25 ug/mL)
Cell Selection:	Neomycin
ORF Nucleotide Sequence:	>RC224001 representing NM_147233 Red=Cloning site Blue=ORF Green=Tags(s)

TTTTGTAATACGACTCACTATAGGGCGCCGGAATTCGTCGACTGGATCCGGTACCGAGGAGATCTGCC
GCC**CGATCGCC**

ATGAGTGGCTCGGGACAGTTCATCCGACCCTGCTAACCCAGACTCACATAAGAGGAAAGGATCGCCAT
GTGACACACTGGCATCAAGCACGAAAAGAGGCGCAGGGAGCAAGAAAATAAATATTTAGAAGAACTAGC
TGAGTTACTGTCTGCCAACATTAGTGACATTGACAGCTTGAGTGTAAAACCAGACAAATGCAAGATTTTG
AAGAAAACAGTCGATCAGATACAGCTAATGAAGAGAATGGAACAAGAGAAATCAACAACATGATGACGATG
TACAGAAATCAGACATCTCATCAAGTAGTCAAGGAGTGATAGAAAAGGAATCCTTGGGACCTCTCTTTT
GGAGGCTTTGGATGGATTTTCTTTGTTGTGAAGTGTGAAGGGAGAATTGATTTGTGTCAGAGAATGTA
ACCAGCTACTTAGGTTACAATCAGGAGGAATTAATGAATACGAGCGTCTACAGCATACTGCACGTGGGGG
ATCATGCAGAATTTGTGAAGAATCTGCTACAAAATCACTAGTAAATGGAGTTCCTTGGCCTCAAGAGGC
AACACGACGAAATAGCCATACCTTTAACTGCAGGATGCTAATTCACCTCCAGATGAGCCAGGGACCGAG
AACCAAGAAGCTTGCCAGCGTTATGAAGTAATGCAGTGTTCCTGTGTCACAGCCAAAATCAATTCAAG
AGGATGGAGAAGATTTCCAGTCATGCTGATTTGTATTGCAGGGGATTACCTCGGCCTCCAGCTATTAC
GGGTGTAGAATCCTTTATGACCAAGCAAGATACTACAGGTAATAATCATCTCTATTGATACTAGTTCCTG
AGAGCTGCTGGCAGAAGCTGGTTGGGAAGATTTAGTGAGGAAGTGATTTATGCTTTTTTCCAACCTCAGG
GCAGAGAACCATCTTATGCCAGACAGCTGTTCCAAGAAGTGATGACTCGTGGCACTGCCTCCAGCCCTC
CTATAGATTCATATTGAATGATGGGACAATGCTTAGCGCCACACCAAGTGTAACCTTTGCTACCCCTCAA
AGTCCAGACATGCAACCTTTTCATCATGGGAATTCATATCATCGACAGGGAGCACAGTGGGCTTTCTCCTC
AAGATGACACTAATCTGGAATGTCAATCCCCGAGTAAATCCCTCGGTCAATCCTAGTATCTCTCCAGC
TCATGGTGTGGCTCGTTCATCCACATTGCCACCATCCAACAGCAACATGGTATCCACCAGAATAAACCGC
CAGCAGAGCTCAGACCTTCATAGCAGCAGTCATAGTAATTCTAGCAACAGCCAAGGAAGTTTCGGATGCT
CACCCGGAAGTCAGATTGTAGCCAATGTTGCCTTAAACCAAGGACAGGCCAGTTCACAGAGCAGTAAATCC
CTCTTTAAACCTCAATAATTCTCTATGGAAGGTACAGGAATATCCCTAGCACAGTTCATGTCTCCAAGG
AGACAGGTTACTTCTGGATTGGCAACAAGGCCAGGATGCCAAACAATTCCTTCTCTCTAATATTTCTGA



[View online »](#)

CATTAAGCTCTCCCGTTGGCATGACAAGTAGTGCCTGTAATAATAATAACCGATCTTATTCAAACATCCC
AGTAACATCTTTACAGGGTATGAATGAAGGACCAATAACTCCGTTGGCTTCTCTGCCAGTTCTCCAGTC
CTCAGGCAGATGAGCTCACAGAATTCACCTAGCAGATTAATAACAACCCAGCAAAGCTGAGTCCAAAG
ATAACAAAGAGATTGCCCAATTTAAATGAAATGATTCAATCTGACAACAGCTCTAGTGATGGCAAACC
TCTGGATTGAGGCTTCTGCATAACAATGACAGACTTTCAGATGGAGACAGTAAATACTCTCAAACAGT
CACAAAGTAGTGCAGCTTTTGACAACAACCTGCCAACAGCAGTTACGGCATGCTGATATAGACACAAGCT
GCAAAGATGTCCTGTCTTGCACAGGCACCTCCAACCTCGCTCTGCTAACTCTTACAGGAGTTCTGTCC
CTCTTCTCATAGCTCATTGACAGAACGGCATAAAATTCTACACCGGCTCTTACAGGAGGGTAGCCCTCA
GATATCACCACCTTGTCTGTCTGAGCCTGATAAAAAGGACAGTGCATCTACTTCTGTGTGCTGACTGGAC
AGGTACAAGGAACTCCAGTATAAACTAGAACTGGATGCTTCAAAGAAAAAGAATCAAAGACCATCA
GCTCTACGCTATCTTTAGATAAAGATGAGAAAGATTTAAGTCAACTCCAAACCTGAGCCTGGATGAT
GTAAGGTGAAAGTGAAAGAAAGAACAGATGGATCCATGTAATAACAACCCAAACCCCAATGACCAAAC
CCACTCTGAGGAAATAAACTGGAGGCCAGAGCCAGTTACAGCTGACCTTGACCAGTTTGATCAGTT
ACTGCCACGCTGGAGAAGGCAGCACAGTTGCCAGGCTTATGTGAGACAGACAGGATGGATGGTGGGTC
ACCAGTGAACCATCAAATCGGAGATCCTGCCAGCTTCACTTCAGTCCGCCACTGCCAGACCCACTTCCA
GGCTAAATAGATTACCTGAGCTGGAATTGGAAGCAATTGATAACCAATTTGGACAACCAGGAACAGGCGA
TCAGATTCATGGACAATAATACAGTGACAGCTATAAATCAGAGTAAATCAGAAGACCAGTGTATTAGC
TCACAATTAGATGAGCTTCTGTCCACCCACAACAGTAGAAGGGAGAAATGATGAGAAGGCTTCTCTTG
AACAGCTGGTATCCTTCTTAGTGGCAAAGATGAACTGAGCTAGCTGAACTAGACAGAGCTCTGGGAAT
TGACAACTTGTTCAGGGGGTGGATTAGATGTATTATCAGAGAGATTTCCACCACAACAAGCAACGCCA
CCTTTGATCATGGAAGAAAGACCAACCTTTATCCCAGCCTTACTCTTCTCTCTCTACTGCCAATC
TCCCTAGCCCTTCCAAGGCATGGTCAGGCAAAAACCTTCACTGGGACGATGCCTGTTCAGTAAACACC
TCCCGAGGTGCTTTTTACCTGGCATGGGCATGCAGCCAGGCAAACCTAAACAGACCCTCCGGTGA
CCTAACAGCTTTCGACTTCAACTACAGCAGCGATTACAGGGACAACAGCAGTTGATACACCAAAATCGGC
AAGCTATCTTAAACAGTTTGCAGCAACTGCTCCTGTTGGCATCAATATGAGATCAGGCATGCAACAGCA
AATTACACCTCAGCCACCCCTGAATGCTCAAATGTTGGCACAACGTGAGCGGAACTGTACAGTCAACAG
CACCGACAGAGGCAGCTAATACAGCAGCAAAAGAGCCATGCTTATGAGGCAGCAAAGCTTTGGGAACAAC
TCCCTCCTCATCTGGACTACCAGTTCAAATGGGAACCCCGTCTTCTCAGGGTGTCCACAGCAATT
CCCCTATCCACAAACTATGGTACAAATCCAGGAACCCACCTGCTTCTACCAGCCGTTTTTCAACTA
GCAGCAAATCCTGAAGCATCCTTGGCAACCGCAACAGCATGGTGAAGCAGAGGCATGACAGGAAACATAG
GAGGACAGTTTGGCACTGGAATCAATCCTCAGATGCAGCAGAATGTCTTCCAGTATCCAGGAGCAGGAAT
GGTTCCTCAAGGTGAGGCCAATTTGCTCCATCTAAGCCCTGGGAGCTCCATGGTGCCGATGCCAATC
CCTCCTCCTCAGAGTTCTTCTTCCAGCAAACCTCCACCTGCCTCCGGGTATCAGTACCAGACATGAAGG
CCTGGCAGCAAGGAGCGATAGGAAACAACAATGTGTTCAAGCTGTCCAGAACCAGCCACGCTGC
ACAGCCAGGAGTATAACAACAATGAGCATCACCGTTTCCATGGCAGGTGGAAATACGAATGTTCAGAAC
ATGAACCAATGATGGCCAGATGCAGATGAGCTTTGAGATGCCAGGAATGAACACTGTGTGCCCTG
AGCAGATAAATGATCCCGCACTGAGACACACAGGCCTTACTGCAACCAGCTCTCATCCACTGACCTTCT
CAAAACAGAAGCAGATGGAACCCAGGTGCAACAGGTTCAAGGTGTTGCTGACGTCCAGTGTACAGTGAAT
CTGGTAGGCGGGGACCCTTACCTGAACAGCCTGGTCCACTGGGAACTCAAAGCCACGTCAGGACCAC
AGACCCCCAGGCCAGCAGAAGAGCCTCCTTCAGCAGTACTGACTGAA

ACGCGTACGCGGCCGCTCGAGCAGAACTCATCTCAGAAGAGGATCTGGCAGCAAATGATATCCTGGATT
ACAAGGATGACGACGATAAGGTTAA

Protein Sequence: >RC224001 representing NM_147233
 Red=Cloning site Green=Tags(s)

```

MSG LGDSSSDPANPDSHKRKGSPCDTLASSTEKRRREQENKYLEELAELLSANISDIDSLSVKPKCKIL
KKTVDQIQLMKRMEQEKSTDDDDVQKSDISSSSQGVIEKESLGPLLEALDGGFFVFNCEGRIVFVSENV
TSYLGYNQEELMNTSVYSILHVGDAEAFVKNLLPKSLVNGVWPWQEA TRRNSHTFNCRMLIHPPDEPGTE
NQEACQRVEVMQCFTVSQPKSIQEDGEDFQSCLIC IARRLPRPPAITGVESFMTKQD TTGKII SIDTSSL
RAAGRTGWEDLVRKCIYAFFQPQGREPSYARQLFQEVMT RGTASSPSYRFILNDGTMLS AHTKCKLCYPQ
SPDMQPFIMGIHIIDREHSGLS PQDDTNSGMSIPRVNPSVNP SISP AHGVARSS TLPSSNSNMVSTRINR
QQSSDLHSSSHSNSNSQGSFGCSPGSQIVANVALNQQQ ASSQSSNPSLNLNNSPMEGTGISLAQFMSPR
RQVTSGLATRPRMPNNSFPNISTLSSPVGMTSSACNNNRSYSNIPV TSLQGMNEGPNN SVGFSASSPV
LRQMSSQNPSRLNIQPAKAESKDNKEIASILNEMIQSDNSSD GKPLDSGLLHNNDR LSDGDSKYSQTS
HKL VQLLTTTAEQQLRHADIDT SCKDVL SGTGTSNSASANS SGGSCPSSHSL TERHKILHRLLEQGPS
DITTL SVEPKKDSASTSV SVTGQVQGNSSIKLELDASKK KESKDHQLLRYLLDKDEKDLRSTPNL SDD
VKVKVEKKEQMDPCNTNPTMKTPTPEEIKLEAQSQFTADLDQFDQLLPTLEKAAQLPGLCETDRMDGAV
TSVTIKSEILPASLQSATARPT SRLNRLPELELEAIDNQFGQP GTGDQIPWNTNTVTAINQSKSEDCIS
SQLDELLCPPTTVEGRNDEKALLEQLV SFLSGKDETELAELDRALGIDKLVQGGGLDVL SERFPPQATP
PLIMEERNL YSQPYSSPSTANL PSPFQGMVRQKPSLGTMPVQVTPPRGAFSPGMGMQPRQTLNRPPAA
PNQLRLQLQQRLQGQQQLIHQNRQAILNQFAATAPVGINMRSGMQQITPQPPLNAQMLAQRQRELYSQQ
HRQRQLIQQRAML MRQQSF GNNLPPSSGLPVQMGNPRLPQGAPQQFPYPPNYGTNP GTPPASTSPFSQL
AANPEASLANRNSMVS RGMTGNIGGQFGTGINPQM QNVFYQPGAGMVPQGEANFAPSLSPGSSMVPMPI
PPPQSSLLQQTTPASGYQSPDMKAWQQGAI GNNNVFSQAVQNQPTPAQPGVYNNMSITVSMAGGNTNVQN
MNPMMAMQMSSLQMPGMNTVCPEQINDPALRHTGL YCNQLSSTDLLKTEADGTQVQQVVFADVQCTVN
LVGGDPYLNQPGPLGTQKPTSGPQTPQAQQK SLLQQLL TE
    
```

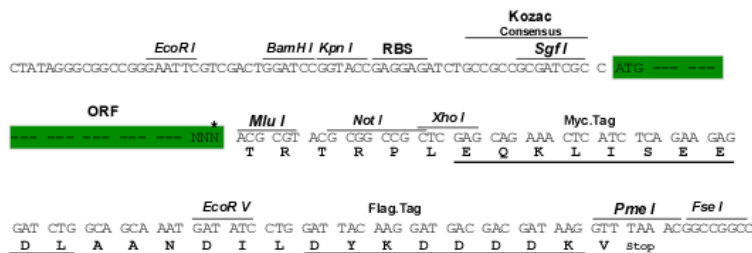
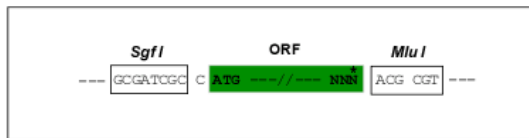
TRTRPLEQKLISEEDLAANDILDYKDDDDKV

Restriction Sites:

Sgfl-MluI

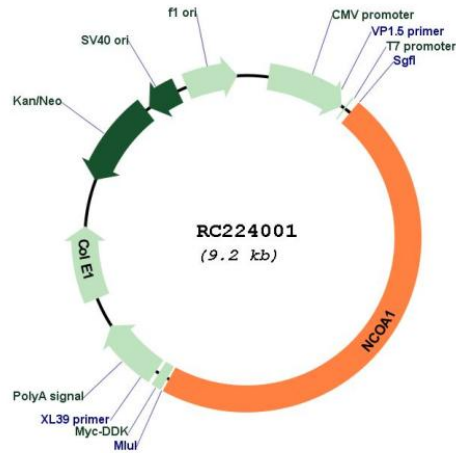
Cloning Scheme:

Cloning sites used for ORF Shuttling:



* The last codon before the Stop codon of the ORF

Plasmid Map:



ACCN: NM_147233

ORF Size: 4320 bp

OTI Disclaimer: The molecular sequence of this clone aligns with the gene accession number as a point of reference only. However, individual transcript sequences of the same gene can differ through naturally occurring variations (e.g. polymorphisms), each with its own valid existence. This clone is substantially in agreement with the reference, but a complete review of all prevailing variants is recommended prior to use. [More info](#)

OTI Annotation: This clone was engineered to express the complete ORF with an expression tag. Expression varies depending on the nature of the gene.

Components: The ORF clone is ion-exchange column purified and shipped in a 2D barcoded Matrix tube containing 10ug of transfection-ready, dried plasmid DNA (reconstitute with 100 ul of water).

Reconstitution Method:	<ol style="list-style-type: none">1. Centrifuge at 5,000xg for 5min.2. Carefully open the tube and add 100ul of sterile water to dissolve the DNA.3. Close the tube and incubate for 10 minutes at room temperature.4. Briefly vortex the tube and then do a quick spin (less than 5000xg) to concentrate the liquid at the bottom.5. Store the suspended plasmid at -20°C. The DNA is stable for at least one year from date of shipping when stored at -20°C.
RefSeq:	NM_147233.2 , NP_671766.1
RefSeq Size:	6892 bp
RefSeq ORF:	4323 bp
Locus ID:	8648
UniProt ID:	Q15788
Cytogenetics:	2p23.3
Domains:	PAS, HLH
Protein Families:	Druggable Genome, Transcription Factors
MW:	156.4 kDa
Gene Summary:	The protein encoded by this gene acts as a transcriptional coactivator for steroid and nuclear hormone receptors. It is a member of the p160/steroid receptor coactivator (SRC) family and like other family members has histone acetyltransferase activity and contains a nuclear localization signal, as well as bHLH and PAS domains. The product of this gene binds nuclear receptors directly and stimulates the transcriptional activities in a hormone-dependent fashion. Alternatively spliced transcript variants encoding different isoforms have been identified. [provided by RefSeq, Jul 2008]