

## Product datasheet for **RC223994**

### **PQBP1 (NM\_001032382) Human Tagged ORF Clone**

#### Product data:

**Product Type:** Expression Plasmids  
**Product Name:** PQBP1 (NM\_001032382) Human Tagged ORF Clone  
**Tag:** Myc-DDK  
**Symbol:** PQBP1  
**Synonyms:** MRX2; MRX55; MRXS3; MRXS8; NPW38; RENS1; SHS  
**Mammalian Cell Selection:** Neomycin  
**Vector:** pCMV6-Entry (PS100001)  
**E. coli Selection:** Kanamycin (25 ug/mL)  
**ORF Nucleotide Sequence:** >RC223994 ORF sequence  
 Red=Cloning site Blue=ORF Green=Tags(s)

TTTTGTAATACGACTCACTATAGGGCGCCGGGAATTCGTCGACTGGATCCGGTACCGAGGAGATCTGCC  
 GCC**CGATCGC**C

ATGCCGCTGCCCGTTGCGCTGCAGACCCGCTTGGCCAAGAGAGGCATCCTCAAACATCTGGAGCCTGAAC  
 CAGAGGAAGAGATCATTGCCGAGGACTATGACGATGATCCTGTGGACTACGAGGCCACCAGGTTGGAGGG  
 CCTACCACCAAGCTGGTACAAGGTGTTGACCCCTTCTGCGGGCTCCCTTACTACTGGAATGCAGACACA  
 GACCTTGTATCCTGGCTCTCCCCACATGACCCCAACTCCGTGGTTACCAAATCGGCCAAGAAGCTCAGAA  
 GCAGTAATGCAGATGCTGAAGAAAAGTTGGACCGGAGCCATGACAAGTCGGACAGGGGCCATGACAAGTC  
 GGACCGCAGCCATGAGAACTAGACAGGGGCCACGACAAGTCAGACCGGGGCCACGACAAGTCGACAGG  
 GATCGAGAGCGTGGCTATGACAAGGTAGACAGAGAGAGAGCGAGACAGGGAACGGGATCGGGACCGCG  
 GGTATGACAAGGCAGACCGGGAAGAGGGCAAAGAACGGCGCCACCATCGCCGGGAGGAGCTGGCTCCCTA  
 TCCAAGAGCAAGAAGGCAGTAAGCCGAAAGGATGAAGAGTTAGACCCCATGGACCCTAGCTCATACTCA  
 GACGCCCCCGGGGCACGTGGTCAACAGGACTCCCAAGCGGAATGAGGCCAAGACTGGCGCTGACACCA  
 CAGCAGCTGGGCCCTCTCCAGCAGCGGCCGTATCCATCCCCAGGGGCTGTGCTCCGGGCCAATGCAGA  
 GGCTCCCGAACCAAGCAGCAGGAT

**ACGCGT**ACGCGGCCGCTCGAGCAGAAACTCATCTCAGAAGAGGATCTGGCAGCAAATGATATCCTGGATT  
 ACAAGGATGACGACGATAAGGTTTAA



[View online »](#)

**Protein Sequence:** >RC223994 protein sequence  
 Red=Cloning site Green=Tags(s)

MPLPVALQTRLAKRGILKHLEPEPEEEIIAEDYDDDPVDYEATRLEGLPPSWYKVFDPSCGLPPYYWNADT  
 DLVSWLSPHDPNSVVTSAKCLRSSNADAEKLRSHDKSDRGHDKSDRSHEKLRGHDKSDRGHDKSDR  
 DRERGYDKVDRERERDRERDRDRGYDKADREEGKERRHHRREELAPYPKSKKAVSRKDEELDPMDPSSYS  
 DAPRGTWSTGLPKRNEAKTGADTTAAGPLFQQRYPYSPGAVLRANAASRTKQQD

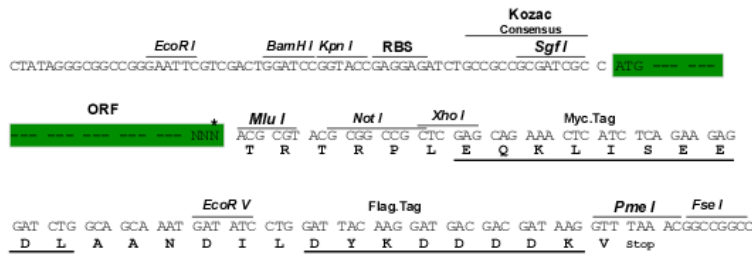
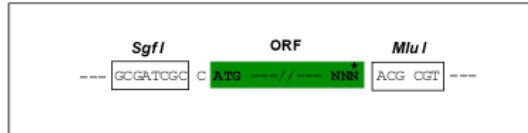
TRTRPLEQKLISEEDLAANDILDYKDDDDKV

**Chromatograms:** [https://cdn.origene.com/chromatograms/mk6567\\_f08.zip](https://cdn.origene.com/chromatograms/mk6567_f08.zip)

**Restriction Sites:** SgfI-MluI

**Cloning Scheme:**

Cloning sites used for ORF Shuttling:



\* The last codon before the Stop codon of the ORF

**ACCN:** NM\_001032382

**ORF Size:** 795 bp

**OTI Disclaimer:** The molecular sequence of this clone aligns with the gene accession number as a point of reference only. However, individual transcript sequences of the same gene can differ through naturally occurring variations (e.g. polymorphisms), each with its own valid existence. This clone is substantially in agreement with the reference, but a complete review of all prevailing variants is recommended prior to use. [More info](#)

**OTI Annotation:** This clone was engineered to express the complete ORF with an expression tag. Expression varies depending on the nature of the gene.

**Components:** The ORF clone is ion-exchange column purified and shipped in a 2D barcoded Matrix tube containing 10ug of transfection-ready, dried plasmid DNA (reconstitute with 100 ul of water).

**Reconstitution Method:**

1. Centrifuge at 5,000xg for 5min.
2. Carefully open the tube and add 100ul of sterile water to dissolve the DNA.
3. Close the tube and incubate for 10 minutes at room temperature.
4. Briefly vortex the tube and then do a quick spin (less than 5000xg) to concentrate the liquid at the bottom.
5. Store the suspended plasmid at -20°C. The DNA is stable for at least one year from date of shipping when stored at -20°C.

**RefSeq:** [NM\\_001032382.2](#)

**RefSeq Size:** 1082 bp

**RefSeq ORF:** 798 bp

**Locus ID:** 10084

**UniProt ID:** [O60828](#)

**Cytogenetics:** Xp11.23

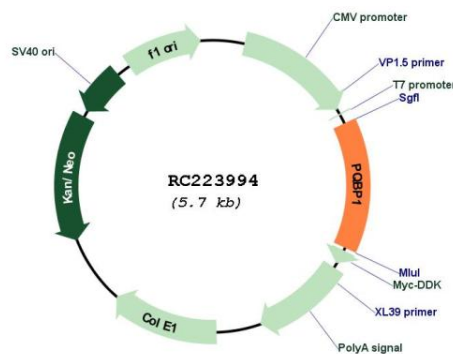
**Protein Families:** Transcription Factors

**Protein Pathways:** Spliceosome

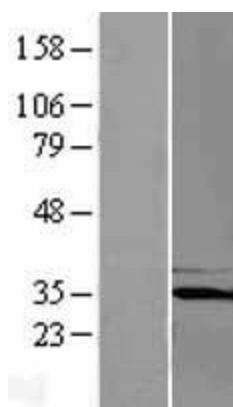
**MW:** 30.5 kDa

**Gene Summary:** This gene encodes a nuclear polyglutamine-binding protein that is involved with transcription activation. The encoded protein contains a WW domain. Mutations in this gene have been found in patients with Renpenning syndrome 1 and other syndromes with X-linked cognitive disability. Multiple alternatively spliced transcript variants that encode different protein isoforms have been described for this gene.[provided by RefSeq, Nov 2009]

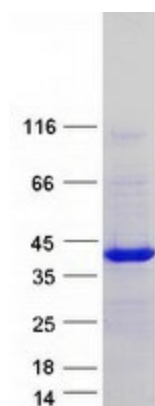
### Product images:



Circular map for RC223994



Western blot validation of overexpression lysate (Cat# [LY422319]) using anti-DDK antibody (Cat# [TA50011-100]). Left: Cell lysates from untransfected HEK293T cells; Right: Cell lysates from HEK293T cells transfected with [RC224043] using transfection reagent MegaTran 2.0 (Cat# [TT210002]).



Coomassie blue staining of purified PQBP1 protein (Cat# [TP323994]). The protein was produced from HEK293T cells transfected with PQBP1 cDNA clone (Cat# RC223994) using MegaTran 2.0 (Cat# [TT210002]).