

Product datasheet for RC223986

FBXO25 (NM_183420) Human Tagged ORF Clone

Product data:

Product Type:	Expression Plasmids
Product Name:	FBXO25 (NM_183420) Human Tagged ORF Clone
Tag:	Myc-DDK
Symbol:	FBXO25
Synonyms:	FBX25
Mammalian Cell Selection:	Neomycin
Vector:	pCMV6-Entry (PS100001)
E. coli Selection:	Kanamycin (25 ug/mL)
ORF Nucleotide Sequence:	>RC223986 representing NM_183420 Red=Cloning site Blue=ORF Green=Tags(s)

TTTTGTAATACGACTCACTATAGGGCGGCCGGAATTCGTCGACTGGATCCGGTACCGAGGAGATCTGCC
GCC**CGATCGC**C

ATGCCATTTTTGGGTGAGACTGGAGATCTCCTGGATGGAGTTGGATTAAGACAGAAGATGGCTGGAAGA
GATGTGAATCTTGTAGTCAGAACTTGAAGAGAGAATAACCGTTGTAACATCAGTCACAGCATTATCTT
AAATAGTGAAGATGGAGAAATATCAATAATGAAGAGCATGAATATGCATCGAAAAAAGGAAAAAGGAC
CATTTTAGAAATGACACAAATACTCAAAGTTTTATCGTAAAAATGGATCTATGTCCATAAAGAAAAGCA
CAAAGGAAAGGCATGGCTATTGCACCTTGGGAGAAGCCTTAATCGGTTAGACTTCTCAAGTCAATTCA
AGATATCCGAAGTTCAATTATGTGGTCAAAGTGTGCAGCTAATTGCAAAATCCAGTTAACTTCAATTG
AGTGGCGTGGCACAGAAGAATTACTTCAACATTTTGGATAAAAATCGTTCAAAAGTTCTTGTAGACCACC
ACAATCCTCGCTTAATCAAAGATCTTCTGCAAGACCTAAGCTCTACCCCTGCAATTCTTATTAGAGGAGT
AGGGAAGTCTGTATTAGTGGAAACATCAATATTTGGATTTGCCGATTAGAACTATTCTCGCCTGGCAA
CAACAGCTACAGGATCTCAGATGACTAAGCAAGTGAACAATGGCCTCACCTCAGTGACCTTCTCTGC
ACATGCTGAACAACATCCTATACCGTTCTCAGACGGATGGGACATCATACCTTAGGCCAGGTGACCCC
CACGTTGTATATGCTTAGTGAAGACAGACAGCTGTGGAAGAAGCTTTGTCAGTACCATTTTGTGAAAAG
CAGTTTTGTAGACATTTGATCCTTTAGAAAAAGGTCATATTGAATGGAAGTTGATGACTTTGCACCTT
AGAAACATTACCCAGCGAAGGAGCAGTACGGAGACACACTGCATTTCTGTGCGCACTGCAGCATTCTCTT
TTGGAAGGACTCAGGACACCCCTGCACGGCGGCCGACCCTGACAGCTGCTTACGCCTGTGTCTCCGCAG
CACTTCATCGACCTCTTCAAGTTT

ACGCGTACGCGGCCGCTCGAGCAGAACTCATCTCAGAAGAGGATCTGGCAGCAATGATATCCTGGATT
ACAAGGATGACGACGATAAGGTTTAA



[View online »](#)

Protein Sequence: >RC223986 representing NM_183420
Red=Cloning site Green=Tags(s)

MPFLGQDWRS PGWSWIKTEDGWKRCE SC SQKLERENNR CNISHS IILNSEDGEIFNNEEHEYASKRKKD
 HFRNDTNTQSFYREKWIYVHKESTKERHGYCTLGEAFNRLDFSSAIQDIRRFNYVVKLLQLIAKSQ L TSL
 SGVAQKNYFNILDKIVQKVLDDHHPRLIKDLLQDLSSTLCILIRGVGKSVLVGNINIWICRLETILAWQ
 QQLQDLQMTKQVNNGLT LSDLPLHMLNNILYRFS DGWDIITL GQVTP TL YMLSEDRQLWKKLCQYHFAEK
 QFCRHLILSEKGHIEWKLMYFALQKHYP AKEQYGD TLHF CRHCSILFWKDSGHPCTAADPDSCFTPVSPQ
 HFIDL FKF

TRTRPLEQKLISEEDLAANDILDYKDDDDKV

Chromatograms: https://cdn.origene.com/chromatograms/mk8054_e06.zip

Restriction Sites: SgfI-MluI

Cloning Scheme:



* The last codon before the Stop codon of the ORF

ACCN: NM_183420

ORF Size: 1074 bp

OTI Disclaimer: The molecular sequence of this clone aligns with the gene accession number as a point of reference only. However, individual transcript sequences of the same gene can differ through naturally occurring variations (e.g. polymorphisms), each with its own valid existence. This clone is substantially in agreement with the reference, but a complete review of all prevailing variants is recommended prior to use. [More info](#)

OTI Annotation: This clone was engineered to express the complete ORF with an expression tag. Expression varies depending on the nature of the gene.

Components: The ORF clone is ion-exchange column purified and shipped in a 2D barcoded Matrix tube containing 10ug of transfection-ready, dried plasmid DNA (reconstitute with 100 ul of water).

- Reconstitution Method:**
1. Centrifuge at 5,000xg for 5min.
 2. Carefully open the tube and add 100ul of sterile water to dissolve the DNA.
 3. Close the tube and incubate for 10 minutes at room temperature.
 4. Briefly vortex the tube and then do a quick spin (less than 5000xg) to concentrate the liquid at the bottom.
 5. Store the suspended plasmid at -20°C. The DNA is stable for at least one year from date of shipping when stored at -20°C.

RefSeq: [NM_183420.2](#)

RefSeq Size: 2502 bp

RefSeq ORF: 1077 bp

Locus ID: 26260

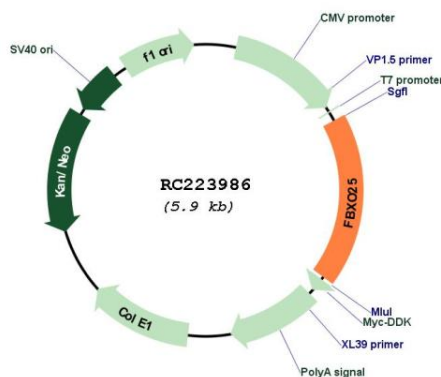
UniProt ID: [Q8TCJ0](#)

Cytogenetics: 8p23.3

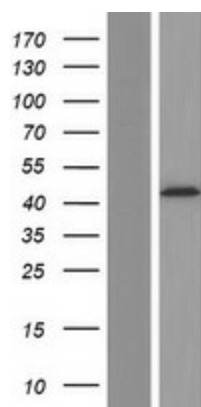
MW: 42 kDa

Gene Summary: This gene encodes a member of the F-box protein family which is characterized by an approximately 40 amino acid motif, the F-box. The F-box proteins constitute one of the four subunits of ubiquitin protein ligase complex called SCFs (SKP1-cullin-F-box), which function in phosphorylation-dependent ubiquitination. The F-box proteins are divided into 3 classes: Fbws containing WD-40 domains, Fbls containing leucine-rich repeats, and Fbxs containing either different protein-protein interaction modules or no recognizable motifs. The protein encoded by this gene belongs to the Fbxs class. Three alternatively spliced transcript variants encoding distinct isoforms have been found for this gene. [provided by RefSeq, Jul 2008]

Product images:



Circular map for RC223986



Western blot validation of overexpression lysate (Cat# [LY405202]) using anti-DDK antibody (Cat# [TA50011-100]). Left: Cell lysates from untransfected HEK293T cells; Right: Cell lysates from HEK293T cells transfected with RC223986 using transfection reagent MegaTran 2.0 (Cat# [TT210002]).