

Product datasheet for **RC223980**

XRN2 (NM_012255) Human Tagged ORF Clone

Product data:

Product Type:	Expression Plasmids
Product Name:	XRN2 (NM_012255) Human Tagged ORF Clone
Tag:	Myc-DDK
Symbol:	XRN2
Vector:	pCMV6-Entry (PS100001)
E. coli Selection:	Kanamycin (25 ug/mL)
Cell Selection:	Neomycin



[View online »](#)

ORF Nucleotide Sequence:

>RC223980 representing NM_012255
 Red=Cloning site Blue=ORF Green=Tags(s)

TTTTGTAATACGACTCACTATAGGGCGGCCGGGAATTCGTCGACTGGATCCGGTACCGAGGAGATCTGCC
 GCC**CGCATCGCC**

ATGGGAGTCCCGCGTCTTCCGCTGGCTCAGCCGCAAGTACCCGTCCATCATAGTCAACTGCGTGGAAAG
 AGAAGCCAAAAGAATGCAATGGTGTAAAGATTCCAGTTGATGCCAGTAAACCTAATCCAAATGATGTGGA
 GTTTGATAATCTGTATTTGGATATGAATGGAATCATCCATCCCTGTACTCATCTGAAGACAAACCAGCA
 CCAAAAAATGAAGATGAAATGATGGTTGCAATTTTGGAGTACATTGACAGACTTTTCAGTATTGTAAGAC
 CAAGAAGACTTCTACATGGCAATAGATGGAGTGGCACCACGTGCTAAAATGAACCAGCAGCGTTCAAG
 GAGGTTCAGGGCATCAAAAAGAAGGAATGGAAGCAGCAGTCGAGAAGCAGCGAGTCAGGGAAGAAATATTG
 GCAAAAGTGGCTTTCTCCTCCAGAAGAAATAAAAGAAAGATTTGACAGCAACTGTATTACACCAGGAA
 CTGAATTCATGGACAATCTTGTAAATGCCTTCGCTATTACATAGCTGATCGTTTAAATAATGACCTGG
 GTGAAAAATTTGACAGTATTTTATCTGATGCTAGTGTCTCTGGTGAAGGAGAACAATAAATCATGGAT
 TACATTAGAAGGCAAAGAGCCAGCCTAACCATGACCCAAATACTCATCATTGTTTATGTGGAGCAGATG
 CTGATCTCATTATGCTTGGCCTTGCCACACATGAACCGAACTTTACCATTATTAGAGAAGAAATCAACCC
 AAACAAGCCAAACCATGTGGTCTTTGTAATCAGTTTGGACATGAGGTCAAAGATTGTGAAGTTTGCCA
 AGAGAAAAGAAGGAAAGCATGATGAACTTGCCGATAGTCTTCTGTGCAGAAGGAGAGTTTATCTTCC
 TTCGGCTTAATGTTCTTCGTGAGTATTTGGAAAGAGAAGTCAATGAGGAGGAGGAGTTTATCTTCC
 TGTTGAGAGGAGCATTGATGACTGGGTTTTCATGTGCTCTTTGTGGAAATGACTTCTCCCTCATTG
 CCATCGTTAGAGATTAGGAAAAATGCAATTGACCGTTTGGTTAACATATACAAAAATGTGGTACACAAAA
 CTGGGGTTACCTTACAGAAAGTGGTTATGTCAATCTGCAAAGAGTACAGATGATCATGTTAGCAGTTGG
 TGAAGTTGAGGATAGCATTTTTTAAAAAGAGAAAGGATGATGAGGACAGTTTTAGAAGACGACAGAAAGAA
 AAAAGAAAGAGAATGAAGAGAGATCAACCGCTTTCACCTAGTGAATATTAACCTCCTCATGCCTTGG
 GTTCAAGAAATTCACCAGGTTCTCAAGTAGCCAGTAATCCGAGACAAGCAGCCTATGAAATGAGGATGCA
 GAATAACTCTAGTCTTCGATATCTCCTAATACGAGTTTACATCTGATGGCTCCCCGTCTCCATTAGGA
 GGAATTAAGCGAAAAGCAGAAGACAGTACAGTGAACCTGAGCCAGAGGATAATGTCAGGTTATGGGAAG
 CTGGCTGGAAGCAGCGGTAACAAGAACAATTTGATGTGGATGCAGCTGATGAGAAATCCGTCGGAA
 AGTTGTGCAGTCTACGTTGAAGGACTTTGCTGGGTTCTTAGATATTATTACCAGGGCTGTGCTTCTGG
 AAGTGGTATTATCCATTTTATTATGCACCATTTGCTTCCAGACTTTGAAGGCATTGCAGACATGCCATCTG
 ATTTTGAAGGGTACGAAACCGTTTAAACCACTAGAACAATTATGGGGTATTTCCAGCTGCAAGTGG
 TAATTTTCTACCTCCATCATGGCGGAAGCTCATGAGTGATCCTGATTCTAGTATAATTGACTTCTATCCT
 GAAGATTTTGTATTGATTTGAATGGGAAGAAATATGCATGGCAAGGTGTTGCTCTCTTGCCATTCGTGG
 ATGAGCGAAGGCTACGAGCTGCCCTAGAAGAGGTATACCCAGACCTCACTCCAGAAGAGACCAGAAGAAA
 CAGCCTTGGAGGTGATGTCTATTTGTGGGAAACATCACCCACTCCATGACTTCATTTTAGAGCTGTAC
 CAGACAGGTTCCACAGAGCCAGTGGAGGTACCCCTGAACTATGTCATGGGATTCAGGAAAGTTTTCTT
 TGGATGAAGAAGCCATTTCCAGATCAAATAGTATGTTCTCCTGTTCTATGTTAAGGGATCTGACACA
 GAACACTGTAGTCAGTATTAATTTTAAAGACCCACAGTTTGTGAAGATTACATTTTTAAAGCTGTAATG
 CTTCAGGAGCAAGAAAGCCAGCAGCAGTACTGAAACCTAGTACTGGGAAAAATCCAGCAATGGACGGC
 AGTGAAGCCTCAGCTTGGCTTTAACCGTGACCGGAGGCCTGTGCACCTGGATCAGGCAGCCTTCAGGAC
 TTTGGCCATGTGATGCCAAGAGGCTCAGGAAGTGGCATTACAGCAATGCTGCACCACCACCTGTGACT
 TACCAGGAAACTTATACAGGCCGCTTTTGGAGGACAAGCCAGATTCCAAAATTTATGTCAAATATGA
 GGCCCCAGGATTCCTGGCGAGGCTCTCTCCCTTTTCCAGCAGCAAAGGTTTGACAGAGGCGTTGGGGC
 TGAACCTCTGCTCCATGGAACCGGATGCTGCAAACCCAGAATGCAGCCTTCCAGCCAAACCGTACCAG
 ATGCTAGCTGGGCTGGTGGTATCCACCAGACGAGATGATCGTGGAGGGAGACAGGGATATCCAGAG
 AAGGAAGGAAATACCCTTGGCCACCACCTCAGGAAGATACAATTGGAAT

ACGCGTACGCGGCCGCTCGAGCAGAAACTCATCTCAGAAGAGGATCTGGCAGCAAATGATATCCTGGATT
 ACAAGGATGACGACGATAAGGTTTAA

Protein Sequence: >RC223980 representing NM_012255
 Red=Cloning site Green=Tags(s)

MGVPAFFRWLSRKYPSSIIIVNCVEEKPKCEKNGVKIPVDASKPNPNDFEFDNLYLDMNGIIHPCTHPEDKPA
 PKNEDEMMVAIFEYIDRLFSIVRPRRLLYMAIDGVAPRAKMNQQRSRFRASKEGMEAAVEKQVRVEEIL
 AKGGFLPPEEIKERFDSNCITPGTEFMDNLAKCLRYIIADRLNNDPGWKNLTVILSDASAPGEGEHKIMD
 YIRRQRAQPNHDPNTHHCLCGADADLIMLGLATHEPNFTIIREEFKPNKPKPCGLCNQFGHEVKDCEGLP
 REKKGKHDELADSLPCAEGEFIFLRLNVLREYLERELTMASLPFTFDVERSIDDWVFMCFVGNDFLPHL
 PSLAIRENAIDRLVNIYKNVVHKTGGYLTESGYVNLQRVQMIMLAVGEVEDSIFKKRKKDEDSFRRRQKE
 KRKRMRDQPAFTPSGILTPHALGSRNSPGSQVASNPRQAAYEMRMQNNSSPSISPNTSFTSDGSPSPLG
 GIKRKAEDSDSEPEPEDNVLWEAGWKQRYYNKFDVDADEKFRRKVVQSYVEGLCWVLRYYYQGCASW
 KWYYPFHYPFASDFEGIADMPSDFEKGTKPFKPLEQLMGVFPAAAGNLFPPSWRKLMSDPDSSIIDFYP
 EDFAI DLNGKKYAWQGVALLPFVDERRLRAALEEVYPDLTPEETRRNSLGGDVL FVGKHHPLHDFILELY
 QTGSTPEVPELCHGIQKFSLDEEAILPDQIVCSPVMLRDLTQNTVVSINFKDPQFAEDYIFKAVM
 LPGARKPAAVLKPSEWESSNGRQWKPQLGFNRDRRPVHLDQAAFRTLGHVMPRSGTGIYSNAAPPVVT
 YQGNLYRPLL RQAQIPKLMNMRPQDSWRGPPPLFQQQRFD RGVGAEP LLPWNRMLQTQNAAFQPNQYQ
 MLAGPGGYPPRRDDRGRQGYPREGRKYPLPPPSGRYNWN

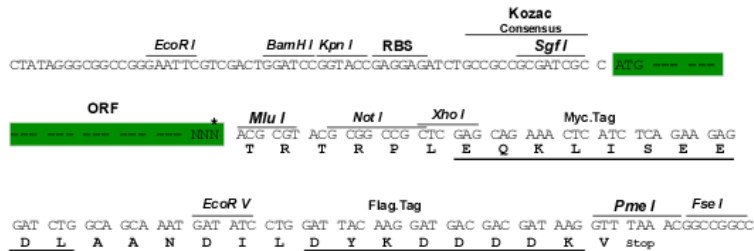
TRTRPLEQKLISEEDLAANDILDYKDDDDKV

Chromatograms: https://cdn.origene.com/chromatograms/mk6687_d09.zip

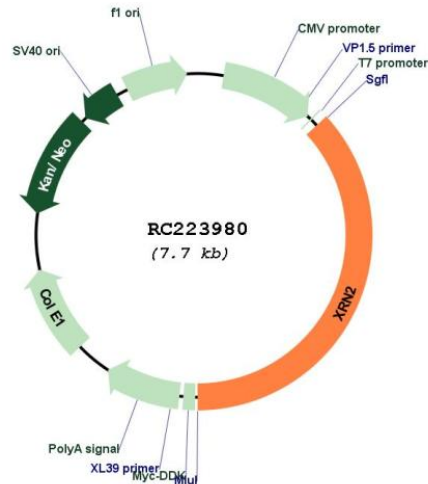
Restriction Sites: SgfI-MluI

Cloning Scheme:

Cloning sites used for ORF Shuttling:



* The last codon before the Stop codon of the ORF

Plasmid Map:


ACCN: NM_012255

ORF Size: 2850 bp

OTI Disclaimer: Due to the inherent nature of this plasmid, standard methods to replicate additional amounts of DNA in E. coli are highly likely to result in mutations and/or rearrangements. Therefore, OriGene does not guarantee the capability to replicate this plasmid DNA. Additional amounts of DNA can be purchased from OriGene with batch-specific, full-sequence verification at a reduced cost. Please contact our customer care team at custsupport@origene.com or by calling 301.340.3188 option 3 for pricing and delivery.

The molecular sequence of this clone aligns with the gene accession number as a point of reference only. However, individual transcript sequences of the same gene can differ through naturally occurring variations (e.g. polymorphisms), each with its own valid existence. This clone is substantially in agreement with the reference, but a complete review of all prevailing variants is recommended prior to use. [More info](#)

OTI Annotation: This clone was engineered to express the complete ORF with an expression tag. Expression varies depending on the nature of the gene.

Components: The ORF clone is ion-exchange column purified and shipped in a 2D barcoded Matrix tube containing 10ug of transfection-ready, dried plasmid DNA (reconstitute with 100 ul of water).

- Reconstitution Method:**
1. Centrifuge at 5,000xg for 5min.
 2. Carefully open the tube and add 100ul of sterile water to dissolve the DNA.
 3. Close the tube and incubate for 10 minutes at room temperature.
 4. Briefly vortex the tube and then do a quick spin (less than 5000xg) to concentrate the liquid at the bottom.
 5. Store the suspended plasmid at -20°C. The DNA is stable for at least one year from date of shipping when stored at -20°C.

RefSeq: [NM_012255.5](#)

RefSeq Size: 3449 bp

RefSeq ORF: 2853 bp

Locus ID: 22803

UniProt ID: [Q9H0D6](#)

Cytogenetics: 20p11.22

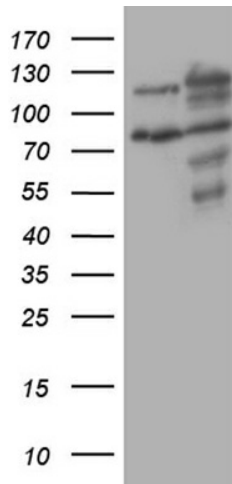
Domains: DUF251

Protein Pathways: RNA degradation

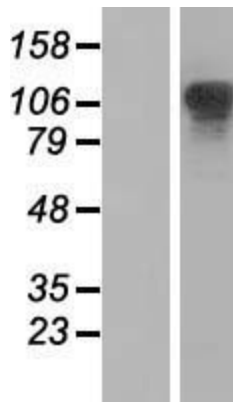
MW: 108.4 kDa

Gene Summary: This gene encodes a 5'-3' exonuclease that promotes transcription termination at cotranscriptional cleavage sites. Alternative splicing results in multiple transcript variants encoding different isoforms. [provided by RefSeq, Dec 2015]

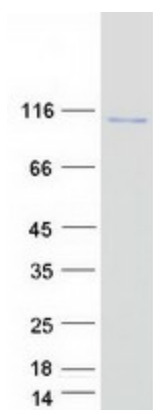
Product images:



HEK293T cells were transfected with the pCMV6-ENTRY control (Cat# [PS100001], Left lane) or pCMV6-ENTRY XRN2 (Cat# RC223980, Right lane) cDNA for 48 hrs and lysed. Equivalent amounts of cell lysates (5 ug per lane) were separated by SDS-PAGE and immunoblotted with anti-XRN2 (Cat# [TA809427])(1:2000). Positive lysates [LY415881] (100ug) and [LC415881] (20ug) can be purchased separately from OriGene.



Western blot validation of overexpression lysate (Cat# [LY415881]) using anti-DDK antibody (Cat# [TA50011-100]). Left: Cell lysates from untransfected HEK293T cells; Right: Cell lysates from HEK293T cells transfected with RC223980 using transfection reagent MegaTran 2.0 (Cat# [TT210002]).



Coomassie blue staining of purified XRN2 protein (Cat# [TP323980]). The protein was produced from HEK293T cells transfected with XRN2 cDNA clone (Cat# RC223980) using MegaTran 2.0 (Cat# [TT210002]).