

## Product datasheet for **RC223979**

### HLA-DQA2 (NM\_020056) Human Tagged ORF Clone

#### Product data:

Product Type:	Expression Plasmids
Product Name:	HLA-DQA2 (NM_020056) Human Tagged ORF Clone
Tag:	Myc-DDK
Symbol:	HLA-DQA2
Synonyms:	DC-alpha; DX-ALPHA; HLA-DCA; HLA-DXA; HLA-DQA2
Mammalian Cell Selection:	Neomycin
Vector:	pCMV6-Entry (PS100001)
E. coli Selection:	Kanamycin (25 ug/mL)
ORF Nucleotide Sequence:	>RC223979 representing NM_020056 Red=Cloning site Blue=ORF Green=Tags(s)

TTTTGTAATACGACTCACTATAGGGCGCCGGGAATTCGTCGACTGGATCCGGTACCGAGGAGATCTGCC  
GCC**CGATCGCC**

ATGATCCTAAACAAAGCTCTGCTGCTGGGGCCCTCGCCCTGACTGCCGTGATGAGCCCCTGTGGAGGTG  
AAGACATTGTGGCTGACCATGTTGCCTCCTATGGTGTGAACCTTACCAGTCTCACGGTCCCTCTGGCCA  
GTACACCCATGAATTTGATGGAGACGAGGAGTTCTACGTGGACCTGGAGACGAAAGAGACTGTCTGGCAG  
TTGCCTATGTTTAGCAAATTTATAAGTTTTGACCCGACAGTGCCTGAGAAATATGGCTGTGGGAAAC  
ACACCTTGAATTCATGATGAGACAGTCCAACCTACCGCTGCCACCAATGAGGTTCTGAGGTCACAGT  
GTTTTCCAAGTTTCTGTGACGCTGGGTGAGCCCAACACCTCATCTGTCTTGTGGACAACATCTTTCT  
CCTGTGGTCAACATCACCTGGCTGAGCAATGGGCACTCAGTCACAGAAGGTGTTTCTGAGACCAGCTTCC  
TCTCCAAGAGTGATCATTCTTCTTCAAGATCAGTTACCTCACCTTCTCCCTTCTGCTGATGAGATTTA  
TGACTGCAAGGTGGAGCACTGGGGCCTGGACGAGCCTTCTGAAACACTGGGAGCCTGAGATCCAGCC  
CCTATGTCAGAGCTCACAGAGACTTTGGTCTGCGCCCTGGGGTTGTCTGTGGCCCTATGGGCATTGTGG  
TGGCACTGTCTTCATCATCCAAGGCCTGCGTTTCAGTTGGTGTCTCCAGACCAAGGGCTCTTA

**ACGCGT**ACGCGGCCGCTCGAGCAGAACTCATCTCAGAAGAGGATCTGGCAGCAAATGATATCTGGATT  
ACAAGGATGACGACGATAAGGTTTAA

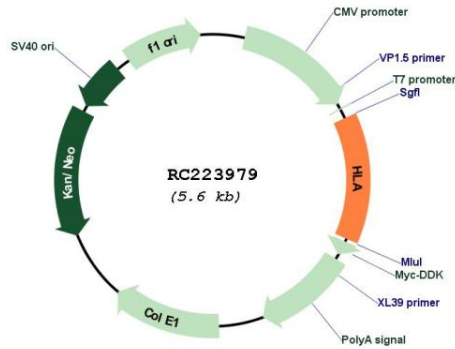


[View online »](#)

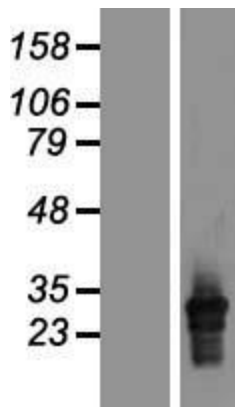


<b>Reconstitution Method:</b>	<ol style="list-style-type: none"><li>1. Centrifuge at 5,000xg for 5min.</li><li>2. Carefully open the tube and add 100ul of sterile water to dissolve the DNA.</li><li>3. Close the tube and incubate for 10 minutes at room temperature.</li><li>4. Briefly vortex the tube and then do a quick spin (less than 5000xg) to concentrate the liquid at the bottom.</li><li>5. Store the suspended plasmid at -20°C. The DNA is stable for at least one year from date of shipping when stored at -20°C.</li></ol>
<b>RefSeq:</b>	<u>NM_020056.2, NP_064440.1</u>
<b>RefSeq Size:</b>	1709 bp
<b>RefSeq ORF:</b>	768 bp
<b>Locus ID:</b>	3118
<b>UniProt ID:</b>	<u>P01906</u>
<b>Cytogenetics:</b>	6p21.32
<b>Domains:</b>	MHC_II_alpha, ig, IGc1
<b>Protein Families:</b>	Transmembrane
<b>Protein Pathways:</b>	Allograft rejection, Antigen processing and presentation, Asthma, Autoimmune thyroid disease, Cell adhesion molecules (CAMs), Graft-versus-host disease, Systemic lupus erythematosus, Type I diabetes mellitus, Viral myocarditis
<b>MW:</b>	27.9 kDa
<b>Gene Summary:</b>	This gene belongs to the HLA class II alpha chain family. The encoded protein forms a heterodimer with a class II beta chain. It is located in intracellular vesicles and plays a central role in the peptide loading of MHC class II molecules by helping to release the CLIP molecule from the peptide binding site. Class II molecules are expressed in antigen presenting cells (B lymphocytes, dendritic cells, macrophages) and are used to present antigenic peptides on the cell surface to be recognized by CD4 T-cells. [provided by RefSeq, Jun 2010]

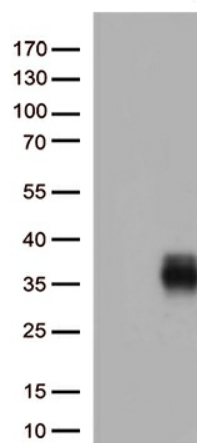
Product images:



Circular map for RC223979



Western blot validation of overexpression lysate (Cat# [LY412649]) using anti-DDK antibody (Cat# [TA50011-100]). Left: Cell lysates from untransfected HEK293T cells; Right: Cell lysates from HEK293T cells transfected with RC223979 using transfection reagent MegaTran 2.0 (Cat# [TT210002]).



HEK293T cells were transfected with the pCMV6-ENTRY control (Cat# [PS100001], Left lane) or pCMV6-ENTRY HLA-DQA2 (Cat# RC223979, Right lane) cDNA for 48 hrs and lysed. Equivalent amounts of cell lysates (5 ug per lane) were separated by SDS-PAGE and immunoblotted with anti-HLA-DQA2 (Cat# [TA812936])(1:500).