

Product datasheet for **RC223957**

DGLUCY (NM_001102369) Human Tagged ORF Clone

Product data:

Product Type:	Expression Plasmids
Product Name:	DGLUCY (NM_001102369) Human Tagged ORF Clone
Tag:	Myc-DDK
Symbol:	DGLUCY
Synonyms:	C14orf159
Mammalian Cell Selection:	Neomycin
Vector:	pCMV6-Entry (PS100001)
E. coli Selection:	Kanamycin (25 ug/mL)



[View online »](#)

ORF Nucleotide Sequence:

>RC223957 representing NM_001102369
 Red=Cloning site Blue=ORF Green=Tags(s)

TTTTGTAATACGACTCACTATAGGGCGGCCGGAATTCGTCGACTGGATCCGGTACCGAGGAGATCTGCC
 GCC**CGGATCGCC**

ATGCCCTTACACTCCACCTGAGGTCCCGCCTTCCTCTGCCATAAGGAGTTTATTCTACAAAAGAAAC
 CAAACATCAGAAATACATCCAGCATGGCTGGAGAGCTCCGACCAGCCAGCCTGGTGGTCCTGCCAGGTC
 CCTTGCTCCAGCTTTTGAAGATTCTGCCAGGTCAACTGCTCCTACCCCTGCTGGGCCAGAGTGAG
 CCAGAAAAGTGGATGCTGCCCCCTCAAGGTGCTATCTCAGAGACCAGGATGGGCCATCCCGATTCTGGA
 AATACGAGTTCGGTGCCTGCACCGGCAGCCTGGCTTCGCTGGAGCAGTACTCGGAGCAGCTGAAGGACAT
 GGTGGCCTTCTTCTGGGCTGCAGCTTCTCCCTGGAGGAGCCTTGAGAAAAGCGGGGCTCCCCAGAAGA
 GACCCAGCAGGTCACAGCCAGACAACAGTGCCTTGTGTTACCCATGCTGGCTTCTGCTGCCCTCTGGTGG
 TCAGGATGAGGCCATTCCAAGGACAAGCTGGAAGGGCTGGTGGGGCCTGCTGCTCCCTCGGAGAACT
 GTTGGGAATCAAAGAGCTTTCCAACCTGCCTACGGGGATGCCATGGTGTGTCCCCAGGGGAGGTTCCA
 GTGTTCTGGCCTTCTCCGCTGACCAGTCTCGGAGCTGTCAGCAGCTGTGAGACCCCACTGGCTTTTGCCA
 GCATCCCAGGCTGCACAGTTATGACTGACCTGAAGGATGCAAAGGCTCCACCTGGTTGTCTACCCCAAGA
 GAGAATCCAGAGGTCCATCACATTTCCAAGATCCTCTGCACTACAGCATCGCGTCAGTCTCTGTTCT
 CAGAAGATCAGAGAACTAGAGTCTATGATCGGCATAGACCCAGGGAACCGGGGATTGGGCACCTGCTCT
 GTAAGATGAGCTGCTGAAGGCCTCTCTCGCTGTCCCATGCCCGCTCAGTGTCTATCACCCTGGGTT
 CCCACACATTTCAATCATGAGCCTCCAGAAGAGACAGATGGCCACCAGGAGCTGTTGCTCTGGTTGCC
 TTCTCGCAGGCCTTGGAAGGAGGTCCGCAATCGTTGACCAGAGAGCCTGGAACCTGCACCAAGAAGA
 TTGTTGAAGATGCTGTTGAGCAAGGTGTTCTGAAGAGCAGATCCCGATATTAACCTACCAAGGTGGATC
 AGTGAAGCTGCTCAGGCATTCCTGTGCAAAAATGGGGACCCGACACACCTAGATTTGACCACCTGGTG
 GCCATAGAGCGTGCCGGAAGAGCTGCTGATGGCAATTACTACAATGCAAGGAAGTGAACATCAAGCACT
 TGGTTGACCCATTGACGATCTTTTTCTTGTGCGAAGAAGATTCTGGAATCTCATCAACTGGTGTTC
 TAACTGGGGAGGCTATGCCCTGGCCTGCGCACTTACATCCTGTACTCATGTGCTGCCACAGTCAGTAC
 CTGAGGAAAGCAGTCGGACCTCCAGGGCACCTGGAGATCAGGCCTGGACTCAGGCCCTCCCGTCGGTCA
 TTAAGGAAGAAAAATGCTGGGCATCTTGGTGCAGCACAAGTCCGGAGTGGCGTCTCGGCATCGTGGG
 CATGGAGGTGGATGGGCTGCCCTCCACAACCCACGCCGAGATGATCCAGAAGCTGGTGGACGTACC
 ACGGCACAGGTG

ACGCGTACGCGGCCGCTCGAGCAGAAACTCATCTCAGAAGAGGATCTGGCAGCAAATGATATCCTGGATT
 ACAAGGATGACGACGATAAGGTTTAA

Protein Sequence:

>RC223957 representing NM_001102369
 Red=Cloning site Green=Tags(s)

MPFTLHLRSRLPSAIRSLILQKKPNIRNTSSMAGELRPASLVVLPRSLAPAFERFCQVNTGPLPLLQSE
 PEKWMLPPQGAISETRMGHPQFWKYEFGACTGSLASLEQYSEQLKDMVAFFLGCFSFLEEALAKGLPRR
 DPAGHSQTTVPCVTHAGFCCLVVTMRPDKLEGLVRACCSLCELLGKELSKPAYGDAMVCPPEV
 VFWPSPLTSLGAVSSCETPLAFASIPGCTVMTDLKDAKAPPGLTPERIPVHHISQDPLHYSIASVSAS
 QKIRELESMIGIDPGNRGIGHLLCKDELLKASLSL SHARVLIITGFPTHFNHEPPEETDGGPPGVALVA
 FLQALEKEVAIIIVDQRAWNLHQKIVEDAVEQGVLTQIPILTYQGSVEAAQAF LCKNGDPQTPRFDHLV
 AIERAGRAADGNYYNARKMNIKHLVDPIDDLFLAAKKIPGISSTGVSNWGGYALACALYILYSCAVHSQY
 LRKAVGPSRAPGDQAWTQALPSVIKEEKMLGILVQHKVRSVSGIVGMEVDGLPFHNTHAEMIQLVDVT
 TAQV

TRTRPLEQKLISEEDLAANDILDYKDDDDKV

Chromatograms:

https://cdn.origene.com/chromatograms/mk8067_e04.zip

Restriction Sites:

Sgfl-Mlul

Cloning Scheme:


ACCN: NM_001102369

ORF Size: 1692 bp

OTI Disclaimer: The molecular sequence of this clone aligns with the gene accession number as a point of reference only. However, individual transcript sequences of the same gene can differ through naturally occurring variations (e.g. polymorphisms), each with its own valid existence. This clone is substantially in agreement with the reference, but a complete review of all prevailing variants is recommended prior to use. [More info](#)

OTI Annotation: This clone was engineered to express the complete ORF with an expression tag. Expression varies depending on the nature of the gene.

Components: The ORF clone is ion-exchange column purified and shipped in a 2D barcoded Matrix tube containing 10ug of transfection-ready, dried plasmid DNA (reconstitute with 100 ul of water).

Reconstitution Method:

1. Centrifuge at 5,000xg for 5min.
2. Carefully open the tube and add 100ul of sterile water to dissolve the DNA.
3. Close the tube and incubate for 10 minutes at room temperature.
4. Briefly vortex the tube and then do a quick spin (less than 5000xg) to concentrate the liquid at the bottom.
5. Store the suspended plasmid at -20°C. The DNA is stable for at least one year from date of shipping when stored at -20°C.

RefSeq: [NM_001102369.2](#), [NP_001095839.1](#)

RefSeq Size: 2763 bp

RefSeq ORF: 1695 bp

Locus ID: 80017

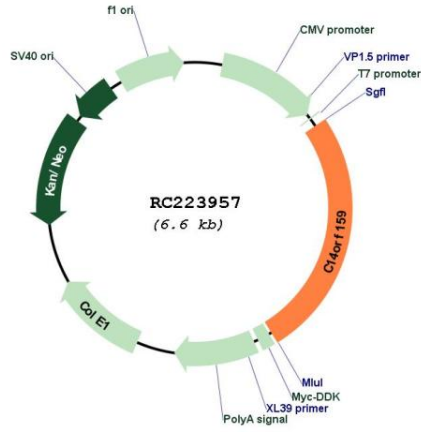
UniProt ID: [Q7Z3D6](#)

Cytogenetics: 14q32.11

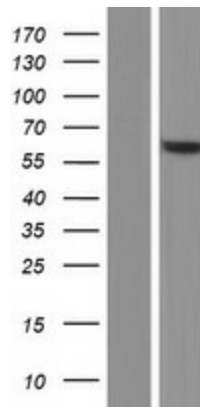
MW: 60.9 kDa

Gene Summary: D-glutamyl cyclase that converts D-glutamate to 5-oxo-D-proline.[UniProtKB/Swiss-Prot Function]

Product images:



Circular map for RC223957



Western blot validation of overexpression lysate (Cat# [LY420136]) using anti-DDK antibody (Cat# [TA50011-100]). Left: Cell lysates from untransfected HEK293T cells; Right: Cell lysates from HEK293T cells transfected with RC223957 using transfection reagent MegaTran 2.0 (Cat# [TT210002]).