

Product datasheet for **RC223954**

SIGLEC6 (NM_001245) Human Tagged ORF Clone

Product data:

Product Type:	Expression Plasmids
Product Name:	SIGLEC6 (NM_001245) Human Tagged ORF Clone
Tag:	Myc-DDK
Symbol:	SIGLEC6
Synonyms:	CD33L; CD33L1; CD33L2; CD327; CDW327; OBBP1
Mammalian Cell Selection:	Neomycin
Vector:	pCMV6-Entry (PS100001)
E. coli Selection:	Kanamycin (25 ug/mL)



[View online »](#)

ORF Nucleotide Sequence:

>RC223954 representing NM_001245
 Red=Cloning site Blue=ORF Green=Tags(s)

TTTTGTAATACGACTCACTATAGGGCGGCCGGAATTCGTCGACTGGATCCGGTACCGAGGAGATCTGCC
 GCC**CGGATCGCC**

ATGCAGGGAGCCAGGAAGCCTCCGCCTCAGAGATGCTACCGCTGCTGCTGCCCTGCTGTGGGCAGGGG
 CCCTGGCTCAGGAGCGGAGATCCAGCTGGAGGGCCAGAGTCACTGACGGTGCAGGAGGGTCTGTGCGT
 CCTCGTACCCTGCAGATTGCCACTACCCTCCAGCCTCGTACTATGGTTATGGCTACTGGTTCCTGGAA
 GGGGCTGATGTTCCAGTGGCCACAAACGACCCAGACGAAGAAGTGCAGGAGGAGACCCGGGGCCGATTCC
 ACCTCCTCTGGGATCCCAGAAGGAAGAACTGCTCCCTGAGCATCAGAGATGCCCGGAGGAGGACAATGC
 TGCATACTTTTCGGTTGAAGTCCAAATGGATGAAATACGGTTATACATCTTCCAAGCTCTGTGCGT
 GTGATGGCCCTGACCCACAGGCCAACATCTCCATCCCAGGGACCCTGGAGTCTGGCCATCCCAGCAATC
 TGACCTGCTCTGTGCCCTGGGTCTGTGAGCAGGGGACGCCCCCATCTTCTCCTGGATGTCAGCTGCCCC
 CACCTCCCTGGGCCCCAGGACCACCCAGTCTCGGTGCTACAATCACCCACGGCCCCAGGACCACAGC
 ACCAACCTCACCTGTGAGGTGACGTTCCCTGGAGCCGGTGTGACCATGGAGAGAACCATCCAGCTCAATG
 TCTCTATGCTCCACAGAAAGTGGCCATCAGCATCTTCCAAGGAAACAGCGCAGCCTTCAAATCCTGCA
 AAACACCTCGTCCCTCCCTGTCTGGAGGGCCAGGCTCTGCGGCTGCTCTGTGATGCTGACGGCAACCCC
 CCTGCACACCTGAGCTGGTTCAGGGCTTCCCCGCCCTGAACGCCACCCCATCTCCAATACCGGGGTCC
 TGGAGTGCCTCAAGTAGGGTCTGCAGAAGAAGGAGATTCACCTGCCGTGCTCAGCATCTCTGGGCTC
 CCTGCAATCTCTGAGTCTCTTTGTGATTGGAACCAGAAGGCAGGGCTGGTGGTGTCTGGGAGCA
 GTCTGGGGAGCTAGCATCACAACCTGGTTTTCTCTGTGTTTGTTTCACTTTCAGAGTGAAGACTAGAA
 GGAAGAAAAGCAGCCAGCCAGTCAAAAACACGGATGATGTGAACCCGTCATGGTCTCAGGCTCCAGGGG
 TCATCAGCACCAGTTCAGACAGGCATAGTTTCAGACCACCCTGCTGAGGCTGGCCCCATCTCAGAAGAT
 GAGCAGGAGCTCCACTACGCTGTCTACTTCCACAAGGTGCAACCTCAGGAACCAAAGTCCACCGACA
 CTGAGTACTCAGAAATCAAGATACACAAG

ACGCGTACGCGGCCGCTCGAGCAGAACTCATCTCAGAAGAGGATCTGGCAGCAAATGATATCCTGGATT
 ACAAGGATGACGACGATAAGGTTTAA

Protein Sequence:

>RC223954 representing NM_001245
 Red=Cloning site Green=Tags(s)

MQGAQEASASEMLPLLLPLWAGALAQERRFQLEGPELTVQEGLCVLPCRLPTLPASYYGWYWFLE
 GADVPVATNDPDEEVQEETRGRFHLLWDP RRKNC SL SIRDARRRDNAAYFFRLKSKWMKYGYTSSKLSVR
 VMALTHRPNISIPGTLESGHPSNLTCVSPWVCEQGTPIFSWMSAAPTSLGPRTTQSSVLTITPRPDHS
 TNLTCQVTFPGAGVTMERTIQLNVSYAPQKVAISIFQGNAAFKILQNTSSLPLVLEGQALRLLCDADGNP
 PAHLSWFQGFALNATPISNTGVLELPQVGSAAEGDFTCRAQHPLGSLQISLSLFVHWKPEGRAGVGLGA
 VWGASITTLVFLCVCFIFRVKTRRKAAPVQNTDDVNPVMVSGSRGHQHGFQTGIVSDHPAEAGPISED
 EQELHYAVLHFHKVQPQEPKVTDEYSEIKIHK

TRTRPLEQKLISEEDLAANDILDYKDDDDKV

Chromatograms:

https://cdn.origene.com/chromatograms/mg4626_a02.zip

Restriction Sites:

Sgfl-Mlul

Cloning Scheme:


ACCN: NM_001245

ORF Size: 1359 bp

OTI Disclaimer: Due to the inherent nature of this plasmid, standard methods to replicate additional amounts of DNA in E. coli are highly likely to result in mutations and/or rearrangements. Therefore, OriGene does not guarantee the capability to replicate this plasmid DNA. Additional amounts of DNA can be purchased from OriGene with batch-specific, full-sequence verification at a reduced cost. Please contact our customer care team at custsupport@origene.com or by calling 301.340.3188 option 3 for pricing and delivery.

The molecular sequence of this clone aligns with the gene accession number as a point of reference only. However, individual transcript sequences of the same gene can differ through naturally occurring variations (e.g. polymorphisms), each with its own valid existence. This clone is substantially in agreement with the reference, but a complete review of all prevailing variants is recommended prior to use. [More info](#)

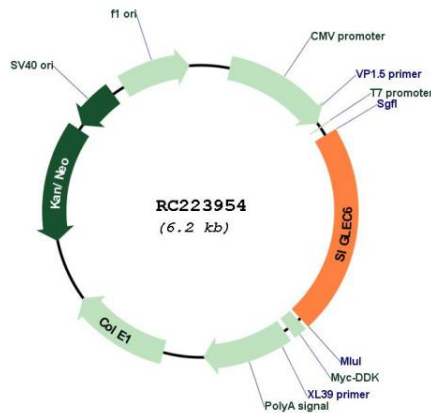
OTI Annotation: This clone was engineered to express the complete ORF with an expression tag. Expression varies depending on the nature of the gene.

Components: The ORF clone is ion-exchange column purified and shipped in a 2D barcoded Matrix tube containing 10ug of transfection-ready, dried plasmid DNA (reconstitute with 100 ul of water).

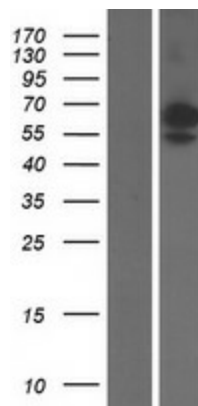
- Reconstitution Method:**
1. Centrifuge at 5,000xg for 5min.
 2. Carefully open the tube and add 100ul of sterile water to dissolve the DNA.
 3. Close the tube and incubate for 10 minutes at room temperature.
 4. Briefly vortex the tube and then do a quick spin (less than 5000xg) to concentrate the liquid at the bottom.
 5. Store the suspended plasmid at -20°C. The DNA is stable for at least one year from date of shipping when stored at -20°C.

RefSeq: [NM_001245.7](#)
RefSeq Size: 2712 bp
RefSeq ORF: 1362 bp
Locus ID: 946
UniProt ID: [O43699](#)
Cytogenetics: 19q13.41
Protein Families: Druggable Genome, Secreted Protein, Transmembrane
MW: 49.91 kDa
Gene Summary: This gene encodes a member of the SIGLEC (sialic acid binding immunoglobulin-like lectin) family of proteins. The encoded transmembrane receptor binds sialyl-TN glycans and leptin. Placental expression of the encoded protein is upregulated in preeclampsia. [provided by RefSeq, Jul 2016]

Product images:



Circular map for RC223954



Western blot validation of overexpression lysate (Cat# [LY420052]) using anti-DDK antibody (Cat# [TA50011-100]). Left: Cell lysates from untransfected HEK293T cells; Right: Cell lysates from HEK293T cells transfected with RC223954 using transfection reagent MegaTran 2.0 (Cat# [TT210002]).