

Product datasheet for RC223943

PQBP1 (NM_005710) Human Tagged ORF Clone

Product data:

Product Type:	Expression Plasmids
Product Name:	PQBP1 (NM_005710) Human Tagged ORF Clone
Tag:	Myc-DDK
Symbol:	PQBP1
Synonyms:	MRX2; MRX55; MRXS3; MRXS8; NPW38; RENS1; SHS
Mammalian Cell Selection:	Neomycin
Vector:	pCMV6-Entry (PS100001)
E. coli Selection:	Kanamycin (25 ug/mL)
ORF Nucleotide Sequence:	>RC223943 ORF sequence Red=Cloning site Blue=ORF Green=Tags(s)

TTTTGTAATACGACTCACTATAGGGCGCCGGAATTCGTCGACTGGATCCGGTACCGAGGAGATCTGCC
GCC**CGATCGC**C

ATGCCGCTGCCGTTGCGCTGCAGACCCGCTTGGCCAAGAGAGGCATCCTCAAACATCTGGAGCCTGAAC
CAGAGGAAGAGATCATTGCCGAGGACTATGACGATGATCCTGTGGACTACGAGGCCACCAGGTTGGAGGG
CCTACCACCAAGCTGGTACAAGGTGTTGACCCCTTCTGCGGGCTCCCTTACTACTGGAATGCAGACACA
GACCTTGTATCCTGGCTCTCCCCACATGACCCCAACTCCGTGGTTACCAAATCGGCCAAGAAGCTCAGAA
GCAGTAATGCAGATGCTGAAGAAAAGTTGGACCGGAGCCATGACAAGTCGGACAGGGGCCATGACAAGTC
GGACCGCAGCCATGAGAACTAGACAGGGGCCACGACAAGTCAGACCGGGGCCACGACAAGTCTGACAGG
GATCGAGAGCGTGGCTATGACAAGGTAGACAGAGAGAGAGCGAGACAGGGAACGGGATCGGGACCGCG
GGTATGACAAGGCAGACCGGGAAGAGGGCAAAGAACGGCGCCACCATCGCCGGGAGGAGCTGGCTCCCTA
TCCAAGAGCAAGAAGGCAGTAAGCCGAAAGGATGAAGAGTTAGACCCCATGGACCCTAGCTCATACTCA
GACGCCCCCGGGGCACGTGGTCAACAGGACTCCCAAGCGGAATGAGGCCAAGACTGGCGCTGACACCA
CAGCAGCTGGGCCCTCTCCAGCAGCGGCCGTATCCATCCCCAGGGGCTGTGCTCCGGGCCAATGCAGA
GGCCTCCCGAACCAAGCAGCAGGAT

ACGCGTACGCGGCCGCTCGAGCAGAAACTCATCTCAGAAGAGGATCTGGCAGCAAATGATATCCTGGATT
ACAAGGATGACGACGATAAGGTTTAA



Protein Sequence: >RC223943 protein sequence
Red=Cloning site Green=Tags(s)

MPLPVALQTRLAKRGILKHLEPEPEEEIIAEDYDDDPVDYEATRLEGLPPSWYKVFDPSCGLPPYYWNADT
 DLVSWLSPHPNSVVTSAKCLRSSNADAEKLRSHDKSDRGHDKSDRSHEKLRGHDKSDRGHDKSDR
 DRERGYDKVDRERERDRERDRDRGYDKADREEGKERRHHRREELAPYPKSKKAVSRKDEELDPMDPSSYS
 DAPRGTWSTGLPKRNEAKTGADTTAAGPLFQQRYPYSPGAVLRANAASRTKQQD

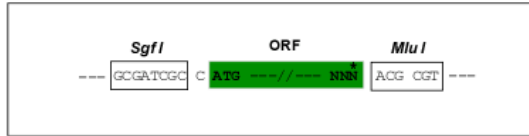
TRTRPLEQKLISEEDLAANDILDYKDDDDKV

Chromatograms: https://cdn.origene.com/chromatograms/mk6567_f08.zip

Restriction Sites: SgfI-MluI

Cloning Scheme:

Cloning sites used for ORF Shuttling:



* The last codon before the Stop codon of the ORF

ACCN: NM_005710

ORF Size: 795 bp

OTI Disclaimer: The molecular sequence of this clone aligns with the gene accession number as a point of reference only. However, individual transcript sequences of the same gene can differ through naturally occurring variations (e.g. polymorphisms), each with its own valid existence. This clone is substantially in agreement with the reference, but a complete review of all prevailing variants is recommended prior to use. [More info](#)

OTI Annotation: This clone was engineered to express the complete ORF with an expression tag. Expression varies depending on the nature of the gene.

Components: The ORF clone is ion-exchange column purified and shipped in a 2D barcoded Matrix tube containing 10ug of transfection-ready, dried plasmid DNA (reconstitute with 100 ul of water).

Reconstitution Method:

1. Centrifuge at 5,000xg for 5min.
2. Carefully open the tube and add 100ul of sterile water to dissolve the DNA.
3. Close the tube and incubate for 10 minutes at room temperature.
4. Briefly vortex the tube and then do a quick spin (less than 5000xg) to concentrate the liquid at the bottom.
5. Store the suspended plasmid at -20°C. The DNA is stable for at least one year from date of shipping when stored at -20°C.

RefSeq: [NM_005710.2](#), [NP_005701.1](#)

RefSeq Size: 1147 bp

RefSeq ORF: 798 bp

Locus ID: 10084

UniProt ID: [O60828](#)

Cytogenetics: Xp11.23

Domains: WW

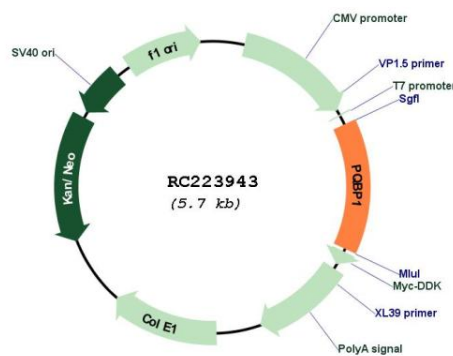
Protein Families: Transcription Factors

Protein Pathways: Spliceosome

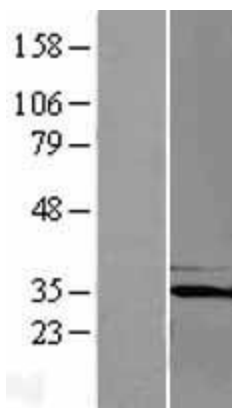
MW: 30.5 kDa

Gene Summary: This gene encodes a nuclear polyglutamine-binding protein that is involved with transcription activation. The encoded protein contains a WW domain. Mutations in this gene have been found in patients with Renpenning syndrome 1 and other syndromes with X-linked cognitive disability. Multiple alternatively spliced transcript variants that encode different protein isoforms have been described for this gene.[provided by RefSeq, Nov 2009]

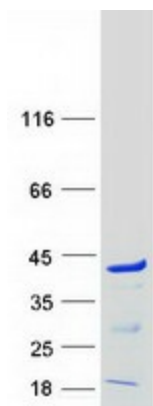
Product images:



Circular map for RC223943



Western blot validation of overexpression lysate (Cat# [LY422319]) using anti-DDK antibody (Cat# [TA50011-100]). Left: Cell lysates from untransfected HEK293T cells; Right: Cell lysates from HEK293T cells transfected with [RC224043] using transfection reagent MegaTran 2.0 (Cat# [TT210002]).



Coomassie blue staining of purified PQBP1 protein (Cat# [TP323943]). The protein was produced from HEK293T cells transfected with PQBP1 cDNA clone (Cat# RC223943) using MegaTran 2.0 (Cat# [TT210002]).