

Product datasheet for **RC223931**

P2Y2 (P2RY2) (NM_176072) Human Tagged ORF Clone

Product data:

Product Type:	Expression Plasmids
Product Name:	P2Y2 (P2RY2) (NM_176072) Human Tagged ORF Clone
Tag:	Myc-DDK
Symbol:	P2Y2
Synonyms:	HP2U; P2RU1; P2U; P2U1; P2UR; P2Y2; P2Y2R
Mammalian Cell Selection:	Neomycin
Vector:	pCMV6-Entry (PS100001)
E. coli Selection:	Kanamycin (25 ug/mL)
ORF Nucleotide Sequence:	>RC223931 representing NM_176072 Red=Cloning site Blue=ORF Green=Tags(s)

TTTTGTAATACGACTCACTATAGGGCGCCGGGAATTCGTCGACTGGATCCGGTACCGAGGAGATCTGCC
GCC**CGATCGC**C

ATGGCAGCAGACCTGGGCCCTGGAATGACACCATCAATGGCACCTGGGATGGGGATGAGCTGGGCTACA
GGTGCCGCTTCAACGAGGACTTCAAGTACGTGCTGCTGCCTGTGTCTACGGCGTGGTGTGCGTGCCTGG
GCTGTGTCTGAACGCCGTGGCGCTCTACATCTTCTGTGCCGCTCAAGACCTGGAATGCGTCCACCACA
TATATGTTCCACCTGGCTGTGTCTGATGACTGTATGCGGCTCCCTGCCGCTGCTGGTCTATTACTACG
CCCGCGGCGACCACTGGCCCTTACGACGGTGTCTGCAAGCTGGTGGCTTCTCTTCTACACCAACCT
TTACTGCAGCATCCTCTTCTCCTCAGTGCATCAGCGTGCACCGGTGTCTGGGCGTCTTACGACCTCTGCGC
TCCTTGGCTGGGGCCGGCCCGCTACGCTCGCCGGTGGCCGGGGCCGTGTGGGTGTTGGTGTGGCCT
GCCAGGCCCGTGTCTACTTTGTACCAACAGCGCGCGGGGGCCGCTAACCTGCCACGACACCTC
GGCACCAGGCTCTTACGCCGCTTCGTGGCCTACAGCTCAGTCATGCTGGGCTGCTCTTCGCGGTGCC
TTTGCCGTCACTTGTCTGTTACGTGCTCATGGCTCGGCGACTGCTAAAGCCAGCTACGGGACCTCGG
GCGGCTGCCTAGGGCAAGCGCAAGTCCGTGCGCACCATCGCGTGGTGTGCTGGTGTCTTCGCCCTGTG
CTTCTGCCATTCCAGTCAACCGCACCTCTACTACTCTTCCGCTCGTGGACCTCAGCTGCCACACC
CTCAAGCCATCAACATGGCCTACAAGTTACCGGCGCTGGCCAGTGTAAAGTTGCCTTGACCCCG
TGCTTACTTCTGGCTGGGAGAGGCTCGTACGCTTTGCCGAGATGCCAAGCCACCACTGGCCCCAG
CCCTGCCACCCCGCTCGCCGAGGCTGGGCTGCGCAGATCCGACAGAAGTGCATGCAGAGGATAGAA
GATGTGTTGGCAGCAGTGGGACTCTAGGCGGACAGTCCACGCCGGTGGTAGCGAGAACAATAAGG
ACATTCGGCTG

ACGCGTACGCGGCCGCTCGAGCAGAACTCATCTCAGAAGAGGATCTGGCAGCAATGATATCCTGGATT
ACAAGGATGACGACGATAAGGTTTAA



[View online »](#)

Protein Sequence: >RC223931 representing NM_176072
Red=Cloning site Green=Tags(s)

MAADLGPWNDTINGTWDGDELGYRCRFNEDFKYVLLPVSYGVVVCLGLCLNAVALYIFLCRLKTWNASTT
 YMFHLAVSDALYAASLPLL VYYYARGDHPFSTVLCKLVRFLFYTNLYCSILFLTCISVHRCLGVLRLR
 SLRWGRARYARRVAGAVWVVLACQAPVLYFVTT SARGGRVTCHDTSAPELFSRFVAYSSVMLGLLFAVP
 FAVILVCYVLMARRLLKPAYGTSGGLPRAKRKSVRTIAVVLAVFALCFLPFHVTRTLYYFSRSLDLSCHT
 LNAINMAYKVRPLASANSCLDPVLYFLAGQRLVRFARDAKPPTGSPATPARRRLGLRRSDRTDMQRIE
 DVLGSSSEDSRRTESTPAGSENTKDIRL

TRTRPLEQKLISEEDLAANDILDYKDDDDKV

Chromatograms: https://cdn.origene.com/chromatograms/mk6158_c06.zip

Restriction Sites: SgfI-MluI

Cloning Scheme:



ACCN: NM_176072

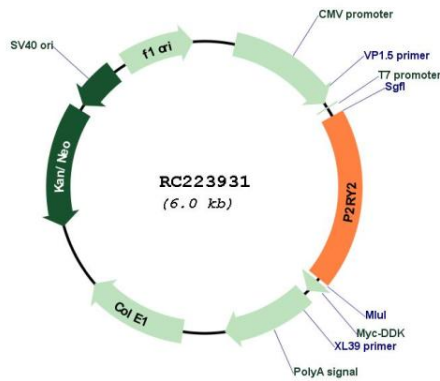
ORF Size: 1131 bp

OTI Disclaimer: Due to the inherent nature of this plasmid, standard methods to replicate additional amounts of DNA in E. coli are highly likely to result in mutations and/or rearrangements. Therefore, OriGene does not guarantee the capability to replicate this plasmid DNA. Additional amounts of DNA can be purchased from OriGene with batch-specific, full-sequence verification at a reduced cost. Please contact our customer care team at custsupport@origene.com or by calling 301.340.3188 option 3 for pricing and delivery.

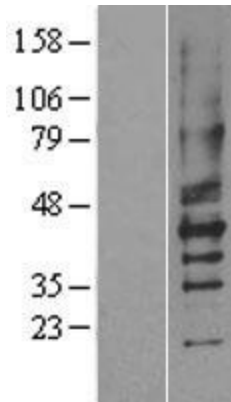
The molecular sequence of this clone aligns with the gene accession number as a point of reference only. However, individual transcript sequences of the same gene can differ through naturally occurring variations (e.g. polymorphisms), each with its own valid existence. This clone is substantially in agreement with the reference, but a complete review of all prevailing variants is recommended prior to use. [More info](#)

OTI Annotation:	This clone was engineered to express the complete ORF with an expression tag. Expression varies depending on the nature of the gene.
Components:	The ORF clone is ion-exchange column purified and shipped in a 2D barcoded Matrix tube containing 10ug of transfection-ready, dried plasmid DNA (reconstitute with 100 ul of water).
Reconstitution Method:	<ol style="list-style-type: none">1. Centrifuge at 5,000xg for 5min.2. Carefully open the tube and add 100ul of sterile water to dissolve the DNA.3. Close the tube and incubate for 10 minutes at room temperature.4. Briefly vortex the tube and then do a quick spin (less than 5000xg) to concentrate the liquid at the bottom.5. Store the suspended plasmid at -20°C. The DNA is stable for at least one year from date of shipping when stored at -20°C.
RefSeq:	NM_176072.2
RefSeq Size:	2681 bp
RefSeq ORF:	1134 bp
Locus ID:	5029
UniProt ID:	P41231
Cytogenetics:	11q13.4
Protein Families:	Druggable Genome, GPCR, Transmembrane
Protein Pathways:	Neuroactive ligand-receptor interaction
MW:	42.1 kDa
Gene Summary:	The product of this gene belongs to the family of P2 receptors, which is activated by extracellular nucleotides and subdivided into P2X ligand-gated ion channels and P2Y G-protein coupled receptors. This family has several receptor subtypes with different pharmacological selectivity, which overlaps in some cases, for various adenosine and uridine nucleotides. This receptor, found on many cell types, is activated by ATP and UTP and is reported to be overexpressed on some cancer cell types. It is involved in many cellular functions, such as proliferation, apoptosis and inflammation. Three transcript variants encoding the same protein have been identified for this gene. [provided by RefSeq, Mar 2013]

Product images:



Circular map for RC223931



Western blot validation of overexpression lysate (Cat# [LY403585]) using anti-DDK antibody (Cat# [TA50011-100]). Left: Cell lysates from untransfected HEK293T cells; Right: Cell lysates from HEK293T cells transfected with RC223931 using transfection reagent MegaTran 2.0 (Cat# [TT210002]).