

Product datasheet for **RC223928**

PACE4 (PCSK6) (NM_138324) Human Tagged ORF Clone

Product data:

Product Type:	Expression Plasmids
Product Name:	PACE4 (PCSK6) (NM_138324) Human Tagged ORF Clone
Tag:	Myc-DDK
Symbol:	PACE4
Synonyms:	PACE4; SPC4
Mammalian Cell Selection:	Neomycin
Vector:	pCMV6-Entry (PS100001)
E. coli Selection:	Kanamycin (25 ug/mL)



[View online »](#)

ORF Nucleotide Sequence:

>RC223928 representing NM_138324
 Red=Cloning site Blue=ORF Green=Tags(s)

TTTTGTAATACGACTCACTATAGGGCGGCCGGGAATTCGTCGACTGGATCCGGTACCGAGGAGATCTGCC
 GCC**CGGATCGCC**

ATGCCTCCGCGCGCGCCGCTGCGCCCGGGCCCGCGCGCCCGGGCCGCGCCGCCACCGACACCG
 CCGCGGGCGCGGGGGCGCGGGGGCGCGGGGGCGCGGGGGCCCGGTTCCGGCCGCTCGCGCCGCG
 TCCTGCGCTGGCTGCTGCTGCTGCGCTGCCTGCCGCTGCTCCGCGCCCCCGCGCGCCCGTCTAC
 ACCAACCCTGGGCGGTGCAAGTCTGGGCGGCCGCGGAGGCGGACCGGTGGCGGGCGCACGGGT
 ACCTCAACTTGGGCCAGATTGGAACCTGGAAGTACTACCATTTTTATCACAGAAAACCTTTAAAG
 ATCAACCTTGAGTAGCAGAGGCCCTCACACCTTCTCAGAATGGACCCAGGTGAAATGGCTCCAGCAA
 CAGGAAGTGAACGAAGGTGAAGAGACAGGTGCGAAGTGACCCGAGGCCCTTTACTTCAACGACCCCA
 TTTGGTCCAACATGTGGTACCTGCATTGTGGCGACAAGAAGAGTGCCTGCCGGTCGGAAATGAATGTCCA
 GGCAGCGTGAAGAGGGGCTACACAGAAAAAACGTGGTGGTACCATCCTTGATGATGGCATAGAGAGA
 AATCACCTGACCTGGCCCCAAATTATGATTCTACGCCAGCTACGACGTGAACGGCAATGATTATGACC
 CATCTCCACGATATGATGCCAGCAATGAAAATAAACACGGCACTCGTTGTGCGGGAGAAGTTGCTGCTTC
 AGCAAAACAATTCCTACTGCATCGTGGGCATAGCGTACAATGCCAAAATAGGAGGCATCCGCATGCTGGAC
 GGCGATGTCACAGATGTGGTCGAGGCAAAGTGCCTGGGCATCAGACCCAACTACATCGACATTTACAGTG
 CCAGCTGGGGGCCGACGACGACGGCAAGACGGTGGACGGGCCCGGGCGACTGGCTAAGCAGGCTTTTCA
 GTATGGCATTAAAAAGGGCCGCGAGGGCCTGGGCTCCATTTTCGTCTGGGCATCTGGGAATGGCGGGAGA
 GAGGGGGACTACTGCTCGTGCATGGCTACACCAACAGCATCTACCCATCTCCGTACGACGCCACCC
 AGAATGGCTACAAGCCCTGGTACCTGGAAGAGTGTGCTCCACCCTGGCCACCCTACAGCAGTGGGGC
 CTTTTATGAGCGAAAAATCGTCACCACGGATCTGCGTCAGCGCTGTACCGATGGCCACACTGGGACCTCA
 GTCTCTGCCCCATGGTGGCGGCATCATCGCCTTGGCTCTAGAAGCAAACAGCCAGTTAACCTGGAGGG
 ACGTCCAGCACCTGCTAGTGAAGACATCCCGCCGGCCACCTGAAAGCGAGCGACTGGAAGTGAACGG
 CGCGGGTCATAAAGTTAGCCATTTCTATGGATTTGGTTTGGTGGACGAGAAGCTCTCGTTGTGGAGGCA
 AAGAAAGTGGACAGCAGTCCATCGCAGCACATGTGTGGCCGCTCGGACAAGAGACCCAGGAGCATCC
 CCTTAGTGCAGGTGCTGCGGACTACGGCCCTGACCAGCGCTGCGCGGAGCACTCGGACCAGCGGGTGGT
 CTACTTGGAGCACGTGGTGGTTCGCACCTCCATCTCACACCCACGCCGAGGAGACCTCCAGATCTACCTG
 GTTTCTCCCTCGGAACCAAGTCTCAACTTCTGGCAAAGAGGTTGCTGGATCTTTCCAATGAAGGGTTTA
 CAAACTGGGAATTCATGACTGTCCACTGCTGGGAGAAAAGGCTGAAGGGCAGTGGACCTTGAAATCCA
 AGATCTGCCATCCAGGTCCGCAACCCGGAGAAGCAAGGTGATCTTGAGACTCCTGTTGCAATCAACTG
 ACCACAGAAGAGAGGGAACCTGGACTAAAAACAGTGTCCGGTGGCAGATTGAACAAGAGCTTTGG

ACGCGTACGCGGCCGCTCGAGCAGAAACTCATCTCAGAAGAGGATCTGGCAGCAATGATATCCTGGATT
 ACAAGGATGACGACGATAAGGTTTAA

Reconstitution Method:

1. Centrifuge at 5,000xg for 5min.
2. Carefully open the tube and add 100ul of sterile water to dissolve the DNA.
3. Close the tube and incubate for 10 minutes at room temperature.
4. Briefly vortex the tube and then do a quick spin (less than 5000xg) to concentrate the liquid at the bottom.
5. Store the suspended plasmid at -20°C. The DNA is stable for at least one year from date of shipping when stored at -20°C.

RefSeq: [NM_138324.2](#), [NP_612197.1](#)

RefSeq Size: 3254 bp

RefSeq ORF: 1959 bp

Locus ID: 5046

UniProt ID: [P29122](#)

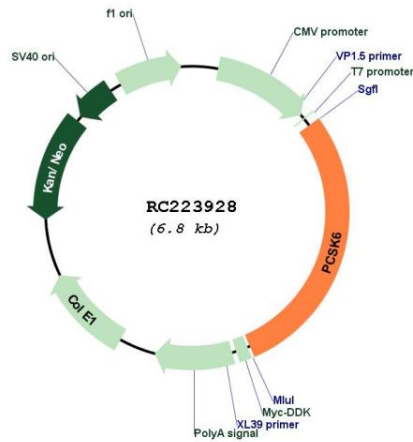
Cytogenetics: 15q26.3

Protein Families: Druggable Genome, Protease, Secreted Protein

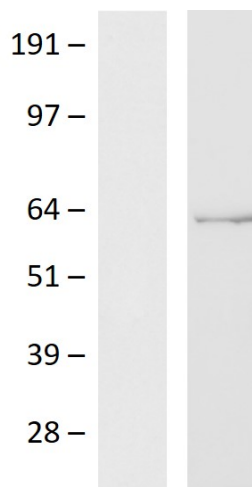
MW: 65.8 kDa

Gene Summary: This gene encodes a member of the subtilisin-like proprotein convertase family, which includes proteases that process protein and peptide precursors trafficking through regulated or constitutive branches of the secretory pathway. The encoded protein undergoes an initial autocatalytic processing event in the ER to generate a heterodimer which exits the ER and sorts to the trans-Golgi network where a second autocatalytic event takes place and the catalytic activity is acquired. The encoded protease is constitutively secreted into the extracellular matrix and expressed in many tissues, including neuroendocrine, liver, gut, and brain. This gene encodes one of the seven basic amino acid-specific members which cleave their substrates at single or paired basic residues. Some of its substrates include transforming growth factor beta related proteins, proalbumin, and von Willebrand factor. This gene is thought to play a role in tumor progression and left-right patterning. Alternatively spliced transcript variants encoding different isoforms have been identified. [provided by RefSeq, Feb 2014]

Product images:



Circular map for RC223928



Western blot validation of overexpression lysate (Cat# [LY408705]) using anti-DDK antibody (Cat# [TA592569]). Left: Cell lysates from untransfected HEK293T cells; Right: Cell lysates from HEK293T cells transfected with RC223928 using transfection reagent PEI.