

Product datasheet for RC223927

P2Y9 (LPAR4) (NM_005296) Human Tagged ORF Clone

Product data:

Product Type:	Expression Plasmids
Product Name:	P2Y9 (LPAR4) (NM_005296) Human Tagged ORF Clone
Tag:	Myc-DDK
Symbol:	P2Y9
Synonyms:	GPR23; LPA4; P2RY9; P2Y5-LIKE; P2Y9
Mammalian Cell Selection:	Neomycin
Vector:	pCMV6-Entry (PS100001)
E. coli Selection:	Kanamycin (25 ug/mL)
ORF Nucleotide Sequence:	>RC223927 representing NM_005296 Red=Cloning site Blue=ORF Green=Tags(s)

TTTTGTAATACGACTCACTATAGGGCGGCCGGAATTCGTCGACTGGATCCGGTACCGAGGAGATCTGCC
GCC**CGATCGCC**

ATGGGTGACAGAAGATTCATTGACTTCCAATCCAAGATTCAAATCAAGCCTCAGACCCAGGTTGGGCA
ATGCTACTGCCAATAATACTTGCATTGTTGATGATTCTTCAAGTATAATCTCAATGGTGTCTACAG
TGTTGATTCATCTTGGGCTGATAACCAACAGTGTCTCTGTTTGTCTCTGTTCCGCATGAAAATG
AGAAGTGAGACTGCTATTTTATACCAATCTAGCTGTCTGATTTGCTTTTGTCTGTACTACTCTT
TAAAAATATTTACAACCTCAACCGCCACTGGCCTTTGGTGACACCCTCTGCAAGATCTCTGAACTGC
ATTCCTTACCAACATCTATGGGAGCATGCTCTTCTCACCTGTATTAGTGTGGATCGTTTCTGGCCATT
GTCTATCCTTTTCGATCTCGTACTATTAGGACTAGGAGGAATTCGCCATTGTGTGTGCTGGTGTCTGGA
TCCTAGTCCTCAGTGGCGGTATTCAGCCTCTTGTGTTTCCACCACTAATGTCAACAATGCAACCACCAC
CTGCTTTGAAGGCTTCTCCAAACGTGTCTGGAAGACTATTTATCCAAGATCACAATATTTATTGAAGTT
GTTGGGTTTATCATTCTCTAATATTGAATGTCTTGTCTTCTGTGGTGTGAGAAGCTTTCGCAAGC
CTGCTACTCTGTCTCAAATGGGACCAATAAGAAAAAGTACTGAAAATGATCACAGTACATATGGCAGT
CTTTGTGGTATGCTTTGTACCTACAACCTGTCTCTTCTGTATGCCCTGGTGGCTCCCAAGCTATT
ACTAATTGCTTTTGGAAAGATTTGCAAAGATCATGTACCAATCACCTGTGCTTGAACCTCTGAAT
GTTGTTTTGACCCTTTCATCTATTACTTACCCTTGAATCCTTTTTCAGAAGTCTTCTACATCAATGCCCA
CATCAGAATGGAGTCCCTGTTTAAAGACTGAAACACCTTTGACCACAAAGCCTTCCCTTCCAGCTATTCAA
GAGGAAGTGAGTGATCAAACAACAATAATGGTGGTGAATTAATGCTAGAATCCACCTTT

ACGCGTACGCGGCCGCTCGAGCAGAAACTCATCTCAGAAGAGGATCTGGCAGCAATGATATCCTGGATT
ACAAGGATGACGACGATAAGGTTTAA



[View online »](#)

Protein Sequence: >RC223927 representing NM_005296
Red=Cloning site Green=Tags(s)

MGDRRFIDFQFQDSNSSLRPRLGNATANNTCIVDDSFKYNLGAVYSVVFILGLITNSVSLFVFCFRMKM
RSETAIFITNLAVSDLLFVCTLPFKIFYNFNHRHWPFGDTLCKISGTAFLTNIYGSMLFLTCISVDRFLAI
VYPFRSRTIRTRNSAIVCAGVWILVLSGGISASLFFSTTNVNNATTTCEFGFSKRIVWKTYLSKITIFIEV
VGFIIPLILNVSCSSVVLRTLRLKATLSQIGTNKKKVLKMITVHMAVVFVCFVPYNSVLFYALVRSQAI
TNCFLERFAKIMYPITLCLATLNCCDFPIYYFTLESFQKSFYINAHIRMESLFTETPLTTKPSLPAIQ
EEVSDQTTNNGGELMLESTF

TRTRPLEQKLISEEDLAANDILDYKDDDDKV

Chromatograms: https://cdn.origene.com/chromatograms/mk6110_h02.zip

Restriction Sites: SgfI-MluI

Cloning Scheme:



ACCN: NM_005296

ORF Size: 1110 bp

OTI Disclaimer: The molecular sequence of this clone aligns with the gene accession number as a point of reference only. However, individual transcript sequences of the same gene can differ through naturally occurring variations (e.g. polymorphisms), each with its own valid existence. This clone is substantially in agreement with the reference, but a complete review of all prevailing variants is recommended prior to use. [More info](#)

OTI Annotation: This clone was engineered to express the complete ORF with an expression tag. Expression varies depending on the nature of the gene.

Components: The ORF clone is ion-exchange column purified and shipped in a 2D barcoded Matrix tube containing 10ug of transfection-ready, dried plasmid DNA (reconstitute with 100 ul of water).

Reconstitution Method:

1. Centrifuge at 5,000xg for 5min.
2. Carefully open the tube and add 100ul of sterile water to dissolve the DNA.
3. Close the tube and incubate for 10 minutes at room temperature.
4. Briefly vortex the tube and then do a quick spin (less than 5000xg) to concentrate the liquid at the bottom.
5. Store the suspended plasmid at -20°C. The DNA is stable for at least one year from date of shipping when stored at -20°C.

RefSeq: [NM_005296.3](#)

RefSeq Size: 2299 bp

RefSeq ORF: 1113 bp

Locus ID: 2846

UniProt ID: [Q99677](#)

Cytogenetics: Xq21.1

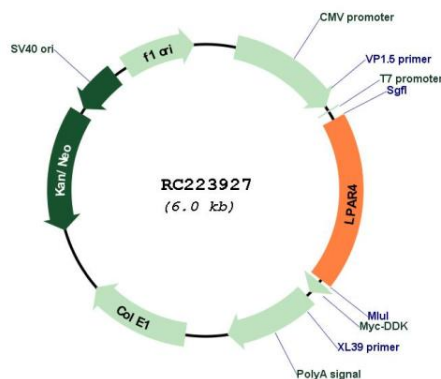
Protein Families: Druggable Genome, GPCR, Transmembrane

Protein Pathways: Neuroactive ligand-receptor interaction

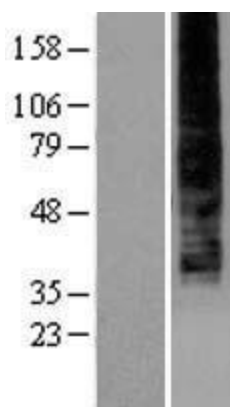
MW: 41.7 kDa

Gene Summary: This gene encodes a member of the lysophosphatidic acid receptor family. It may also be related to the P2Y receptors, a family of receptors that bind purine and pyrimidine nucleotides and are coupled to G proteins. The encoded protein may play a role in monocytic differentiation. [provided by RefSeq, Feb 2009]

Product images:



Circular map for RC223927



Western blot validation of overexpression lysate (Cat# [LY401630]) using anti-DDK antibody (Cat# [TA50011-100]). Left: Cell lysates from untransfected HEK293T cells; Right: Cell lysates from HEK293T cells transfected with RC223927 using transfection reagent MegaTran 2.0 (Cat# [TT210002]).