

Product datasheet for **RC223916**

Rex1 (ZFP42) (NM_174900) Human Tagged ORF Clone

Product data:

Product Type:	Expression Plasmids
Product Name:	Rex1 (ZFP42) (NM_174900) Human Tagged ORF Clone
Tag:	Myc-DDK
Symbol:	Rex1
Synonyms:	REX-1; REX1; zfp-42; ZNF754
Mammalian Cell Selection:	Neomycin
Vector:	pCMV6-Entry (PS100001)
E. coli Selection:	Kanamycin (25 ug/mL)
ORF Nucleotide Sequence:	>RC223916 representing NM_174900 Red=Cloning site Blue=ORF Green=Tags(s)

TTTTGTAATACGACTCACTATAGGGCGGCCGGAATTCGTCGACTGGATCCGGTACCGAGGAGATCTGCC
GCC**CGGATCGCC**

ATGAGCCAGCAACTGAAGAAACGGGCAAAGACAAGACACCAGAAAGGCCTGGGTGGAAGAGCCCCAGTG
GGGCTAAGCCCAGGCAAGCAAGTCAAGCCAAGACCTGCAGGCGGAAATAGAACCCTGTCAGCGGGTGTG
GGCCTTATGTGATGGCTATGTGTGCTATGAGCCTGGCCCTCAGGCTCTCGGAGGGGATGATTTCTCAGAC
TGTTACATAGAATGCGTCATAAGGGGTGAGTTTCTCAACCCATCCTGGAAGAGGACTCACTTTTTGAGT
CCTTGGAAATACCTAAAGAAAGGATCAGAAACAACAGCTTTCTCAAAGGTTTTTCGAAGCAAGCTCCCTTGA
ATGTTCTTTGGAATACATGAAAAAGGGGTAAAGAAAGAGCTTCCACAAAAGATAGTTGGAGAGAATTTCG
CTTGAGTATTCTGAGTACATGACAGGCAAGAAGCTTCCGCTGGAGGAATACCTGGCATTGACCTATCAG
ATCCTAAACAGCTCGCAGAAATTTGCTAGAAAGAAGCCCCATAAATAAAGAATATGACAGTCTGAGCGC
AATCGCTTGTCTCAGAGTGGATGCACTAGGAAGTTGAGGAATAGAGCTGCCCTGAGAAAGCATCTCCTC
ATTCATGGTCCCCGAGACCAGTCTGTGCGGAATGTGGAAAGCGTTTCGTTGAGAGCTCAAACTAAAGA
GACATTTCTGGTTCATACTGGAGAGAAGCCGTTTCGGTGCACTTTTGAAGGGTCCGAAAGCGCTTCTC
TCTGGACTTTAATTTGCGTACGCACGTGCGCATCCACACGGGGGAGAAACGTTTCGTGTCCCTTTCAA
GGCTGCAACAGGAGGTTTATTCAGTCAAATAACCTGAAAGCCACATCCTAACGCATGCAAAACGAACA
AGAATGAACAAGAGGGAAG

ACGCGTACGCGGCCGCTCGAGCAGAAACTCATCTCAGAAGAGGATCTGGCAGCAATGATATCCTGGATT
ACAAGGATGACGACGATAAGGTTTAA



[View online »](#)

Protein Sequence: >RC223916 representing NM_174900
Red=Cloning site Green=Tags(s)

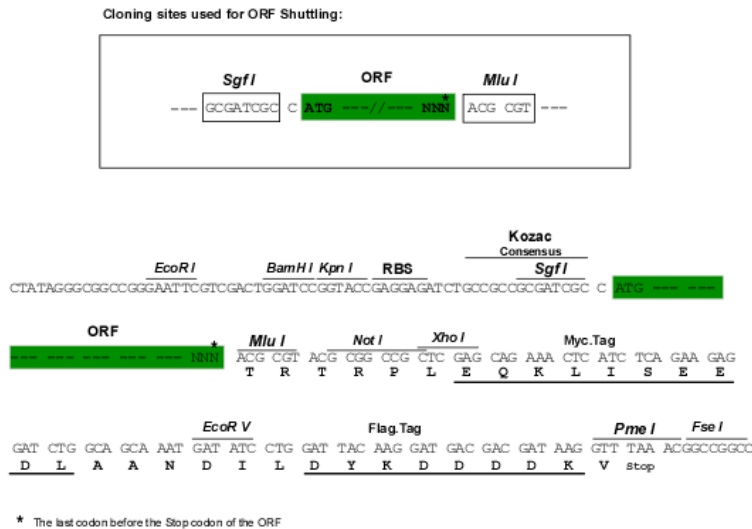
MSQQLKKRAKTRHQKLGGRAPSGAKPRQ GKSSQDLQAEIEPVSAVWALCDGYVCYEPGPQALGGDDFSD
 CYIECVIRGEFSQPILEEDSLFESLEYLKKGSEQQLSQKVFEASSLECSLEYMKKGVKKELPQKIVGENS
 LEYSEYMTGKKLPPGGIPGIDLSDPKQLAEFARKKPPINKEYDSL SAIAC PQSGCTRKLNRNRAALRKHLL
 IHGPRDHVCAECGKAFV ESKLKRHFLVHTGEKPFRC TFE GCGKRFSLDFNLRTHVRIHTGEKRFVCPFQ
 GCNRRFIQSNLKAHILTHANTNKNEQEGK

TRTRPLEQKLISEEDLAANDILDYKDDDDKV

Chromatograms: https://cdn.origene.com/chromatograms/mk8013_b05.zip

Restriction Sites: SgfI-MluI

Cloning Scheme:



ACCN: NM_174900

ORF Size: 930 bp

OTI Disclaimer: The molecular sequence of this clone aligns with the gene accession number as a point of reference only. However, individual transcript sequences of the same gene can differ through naturally occurring variations (e.g. polymorphisms), each with its own valid existence. This clone is substantially in agreement with the reference, but a complete review of all prevailing variants is recommended prior to use. [More info](#)

OTI Annotation: This clone was engineered to express the complete ORF with an expression tag. Expression varies depending on the nature of the gene.

Components: The ORF clone is ion-exchange column purified and shipped in a 2D barcoded Matrix tube containing 10ug of transfection-ready, dried plasmid DNA (reconstitute with 100 ul of water).

Reconstitution Method:

1. Centrifuge at 5,000xg for 5min.
2. Carefully open the tube and add 100ul of sterile water to dissolve the DNA.
3. Close the tube and incubate for 10 minutes at room temperature.
4. Briefly vortex the tube and then do a quick spin (less than 5000xg) to concentrate the liquid at the bottom.
5. Store the suspended plasmid at -20°C. The DNA is stable for at least one year from date of shipping when stored at -20°C.

RefSeq: [NM_174900.5](#)

RefSeq Size: 2649 bp

RefSeq ORF: 933 bp

Locus ID: 132625

UniProt ID: [Q96MM3](#)

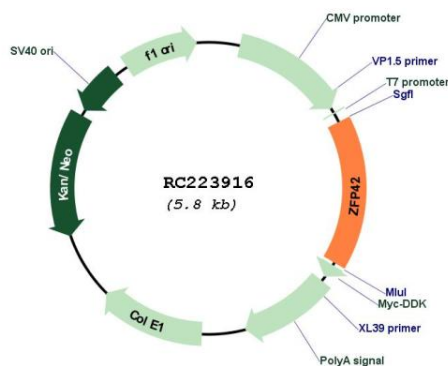
Cytogenetics: 4q35.2

Protein Families: Adult stem cells, Embryonic stem cells, ES Cell Differentiation/IPS, Stem cell - Pluripotency

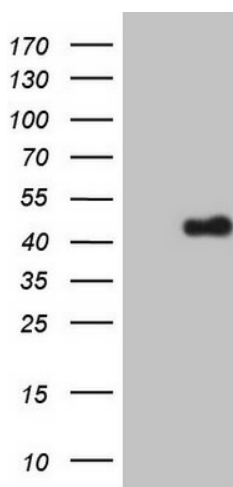
MW: 34.6 kDa

Gene Summary: Involved in the reprogramming of X-chromosome inactivation during the acquisition of pluripotency. Required for efficient elongation of TSIX, a non-coding RNA antisense to XIST. Binds DXPas34 enhancer within the TSIX promoter. Involved in ES cell self-renewal (By similarity).[UniProtKB/Swiss-Prot Function]

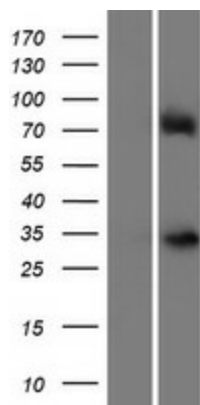
Product images:



Circular map for RC223916



HEK293T cells were transfected with the pCMV6-ENTRY control (Cat# [PS100001], Left lane) or pCMV6-ENTRY ZFP42 (Cat# RC223916, Right lane) cDNA for 48 hrs and lysed. Equivalent amounts of cell lysates (5 ug per lane) were separated by SDS-PAGE and immunoblotted with anti-ZFP42 (Cat# [TA807870])(1:2000). Positive lysates [LY406385] (100ug) and [LC406385] (20ug) can be purchased separately from OriGene.



Western blot validation of overexpression lysate (Cat# [LY406385]) using anti-DDK antibody (Cat# [TA50011-100]). Left: Cell lysates from untransfected HEK293T cells; Right: Cell lysates from HEK293T cells transfected with RC223916 using transfection reagent MegaTran 2.0 (Cat# [TT210002]).