

Product datasheet for **RC223904**

KCTD8 (NM_198353) Human Tagged ORF Clone

Product data:

Product Type:	Expression Plasmids
Product Name:	KCTD8 (NM_198353) Human Tagged ORF Clone
Tag:	Myc-DDK
Symbol:	KCTD8
Mammalian Cell Selection:	Neomycin
Vector:	pCMV6-Entry (PS100001)
E. coli Selection:	Kanamycin (25 ug/mL)



[View online »](#)

ORF Nucleotide Sequence:

>RC223904 representing NM_198353
 Red=Cloning site Blue=ORF Green=Tags(s)

TTTTGTAATACGACTCACTATAGGGCGGCCGGAATTCGTCGACTGGATCCGGTACCGAGGAGATCTGCC
 GCC**CGCATCGC**C

ATGGCTCTGAAGGACACGGGCAGCGCGGCAGCACCATCTGCCATTAGCGAGATGGTTTCCTCGTCCA
 GCTCGCCCGGCGCGTTCGGCCGCCGCCCGGGGCCCTGCGCACCTCGCCCTTCCTGAAGTAGTGGA
 GCTGAACGTAGGCGGCCAGGTTTATGTGACCAAGCACTCGACGCTGCTCAGCGTCCCGGACAGTACTTTG
 GCCAGCATGTTCTCGCCCTCTAGTCCCCGTGGCGGCGCCCGGCGCGGGGCGAGCTGCCAGGGACAGCC
 GGGCGCGCTTCTCATCGACCGGACGGCTTCTTTTCAGGTACGTGCTGGATTACTGCGGGACAAGCA
 ACTCGCGTCCCGGAGCACTTCCCCGAGAAGGAGCGGCTGCTGCGCGAGGCGGAGATTTCCAGCTCACC
 GACTTGGTCAAGCTGCTGTCGCCAAGGTACCAAGCAGAAGCTCTCAACGACGAGGGTCCAGAGCG
 ACCTGGAGGACAACGTCTCGCAGGTAGCAGCGACGCGTCTGCTGCGCGGGGGCGGCGCCCGCTGCC
 CTGGGGCCGGGAGCGCACGGTGGTGGCGGCGGCGGCGCGCAGGACAAGCGCTCGGGCTTCTCAGC
 CTGGGCTACCGGGCTCCTACACCACCGTGC GCGACAACAGGCCGACGCCAAATTCGGCGGTGGCGC
 GCATCATGGTGTGCGGGCGCATCGCGTGGCCAAGGAGTCTTCGGGGACACGCTCAACGAGAGCCGCGA
 CCCCAGCCGGCAGCCGGAGAAGTACACGTCCCGCTTCTACCTCAAGTTCACCTACTTGGAGCAGGCC
 GATCGCCTGTCCGAGGCCGGCTTCCACATGGTGGCGTGAACCTCTGGGACCGCCCGCTTCGTAACC
 AGTACCGCGACGACAAGATCTGGAGCAGCTACACCGAGTACATTTTCTCCGACCACCTCAGAAAATAGT
 ATCACCTAAACAAGAACATGAAGATAGGAAACATGACAAAGTCACTGATAAAGGAAGTGAAGTGGGACT
 TCCTGTAATGAGCTCTCCACTTCCAGTTGTGACAGCCATTAGAGGCAAGCACTCCCAGGACAACCCAT
 CCAGTCCCAGCAGGCAACAGCTCACCAACCTAACACTTTAACATTGGATCGCCCTCAAAAAAGCAC
 TGTACAATGGATACCCCCACCAGACAAAACGAGAAACAGTGAACCTTTTACAGCCCTCATCAGCAAGTCC
 CGGAAAACAAATCTGTCCAAAAAGAAAGTCTGTGAGAAGCTAAGTGTGGAAGAAGAAATGAAAAAGTGA
 TTCAGGATTTTAAAAAATCCACATTCCAGATTATTTTCCAGAGCGCAAACGCCAATGGCAATCTGAACT
 GTTGACAGAAGTATGGTTA

ACGCGTACGCGGCCGCTCGAGCAGAAACTCATCTCAGAAGAGGATCTGGCAGCAAATGATATCCTGGATT
 ACAAGGATGACGACGATAAGGTTTAA

Protein Sequence:

>RC223904 representing NM_198353
 Red=Cloning site Green=Tags(s)

MALKDTSGGSTILPISEMVSSSSPGASAAAAPGPCAPSPFPEVVVENVGGQVYVTKHSTLLSVPDSTL
 ASMFSPSPRGGARRRGELPRDSRARFFIDRDGFLFRYVLDYLRDKQLALPEHFPEKERLLREAEYFQLT
 DLVKLLSPKVTKQNSLNDEGCQSDLEDNVSQSSDALLLRGAAAAPVSPGAGHGGGGGGAQDKRSGFLT
 LGYRGSYTTVRDNQADAKFRRVARIMVCGRIALAKEVFGDTLNESRDPDRQPEKYTSRFYLFKFTYLEQAF
 DRLSEAGFHMVACNSSGTAAFVNQYRDDKIWSSYTEYIFFRPPQKIVSPKQEHEDRKHDKVTDKGSSEGT
 SCNELSTSSCDSEASTPQDNPSAQAATAHQPNLTLDRPSKKAPVQWIPPPDKRRNSELFQTLISK
 RETNLSKKKVCEKLSVEEEMKKCIQDFKKIHIPDYFPERKRQWQSELLQKYGL

TRTRPLEQKLISEEDLAANDILDYKDDDDKV

Chromatograms:

https://cdn.origene.com/chromatograms/mk8044_b06.zip

Restriction Sites:

Sgfl-Mlul

Cloning Scheme:


ACCN: NM_198353

ORF Size: 1419 bp

OTI Disclaimer: The molecular sequence of this clone aligns with the gene accession number as a point of reference only. However, individual transcript sequences of the same gene can differ through naturally occurring variations (e.g. polymorphisms), each with its own valid existence. This clone is substantially in agreement with the reference, but a complete review of all prevailing variants is recommended prior to use. [More info](#)

OTI Annotation: This clone was engineered to express the complete ORF with an expression tag. Expression varies depending on the nature of the gene.

Components: The ORF clone is ion-exchange column purified and shipped in a 2D barcoded Matrix tube containing 10ug of transfection-ready, dried plasmid DNA (reconstitute with 100 ul of water).

- Reconstitution Method:**
1. Centrifuge at 5,000xg for 5min.
 2. Carefully open the tube and add 100ul of sterile water to dissolve the DNA.
 3. Close the tube and incubate for 10 minutes at room temperature.
 4. Briefly vortex the tube and then do a quick spin (less than 5000xg) to concentrate the liquid at the bottom.
 5. Store the suspended plasmid at -20°C. The DNA is stable for at least one year from date of shipping when stored at -20°C.

RefSeq: [NM_198353.3](#)

RefSeq Size: 2240 bp

RefSeq ORF: 1422 bp

Locus ID: 386617

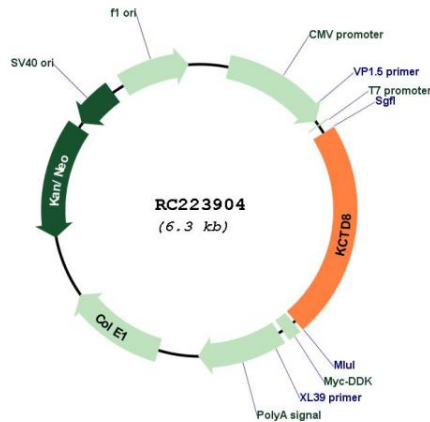
UniProt ID: [Q6ZWB6](#)

Cytogenetics: 4p13

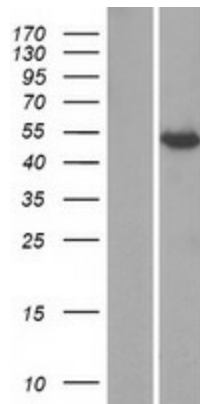
MW: 52.3 kDa

Gene Summary: Auxiliary subunit of GABA-B receptors that determine the pharmacology and kinetics of the receptor response. Increases agonist potency and markedly alter the G-protein signaling of the receptors by accelerating onset and promoting desensitization (By similarity).
[UniProtKB/Swiss-Prot Function]

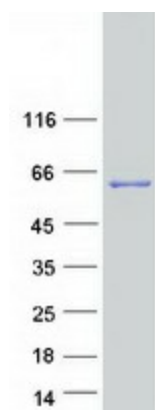
Product images:



Circular map for RC223904



Western blot validation of overexpression lysate (Cat# [LY405027]) using anti-DDK antibody (Cat# [TA50011-100]). Left: Cell lysates from untransfected HEK293T cells; Right: Cell lysates from HEK293T cells transfected with RC223904 using transfection reagent MegaTran 2.0 (Cat# [TT210002]).



Coomassie blue staining of purified KCTD8 protein (Cat# [TP323904]). The protein was produced from HEK293T cells transfected with KCTD8 cDNA clone (Cat# RC223904) using MegaTran 2.0 (Cat# [TT210002]).