

Product datasheet for RC223897

Glycoprotein VI (GP6) (NM_016363) Human Tagged ORF Clone

Product data:

Product Type:	Expression Plasmids
Product Name:	Glycoprotein VI (GP6) (NM_016363) Human Tagged ORF Clone
Tag:	Myc-DDK
Symbol:	Glycoprotein VI
Synonyms:	BDPLT11; GPIV; GPVI
Mammalian Cell Selection:	Neomycin
Vector:	pCMV6-Entry (PS100001)
E. coli Selection:	Kanamycin (25 ug/mL)
ORF Nucleotide Sequence:	>RC223897 representing NM_016363 Red=Cloning site Blue=ORF Green=Tags(s)

TTTTGTAATACGACTCACTATAGGGCGCCGGGAATTCGTCGACTGGATCCGGTACCGAGGAGATCTGCC
GCC**CGCATCGCC**

ATGTCTCCATCCCCGACCGCCCTCTTCTGTCTTGGGCTGTGTCTGGGGCGTGTGCCAGCGCAGAGTGGAC
CGCTCCCCAAGCCCTCCCTCCAGGCTCTGCCAGCTCCCTGGTGCCCTGGAGAAGCCAGTGACCCCTCCG
GTGCCAGGGACCTCCGGGCGTGGACCTGTACCGCTGGAGAAGCTGAGTCCAGCAGGTACCAGGATCAG
GCAGTCTCTTCATCCCGCCATGAAGAGAAGTCTGGCTGGACGCTACCGCTGCTCTACCAGAACGGAA
GCCTCTGGTCCCTGCCAGCGACCACTGGAGCTCGTTGCCACGGGAGTTTTTGGCAAACCTCGCTCTC
AGCCCAGCCCGCCCGGGGTGTCGTACAGAGGGGACGTAAACCCTACAGTGTACAGTCCGGTATGGCTTT
GACCAATTTGCTCTGTACAAGGAAGGGGACCCCTGCGCCCTACAAGAATCCCGAGAGATGGTACCGGGCTA
GTTTCCCATCATCACGGTGACCGCCGCCACAGCGGAACCTACCGATGTACAGCTTCTCCAGCAGGGA
CCCATACCTGTGGTCCGCCCCAGCGACCCCTGGAGCTTGTGGTACAGGAACCTCTGTGACCCCCAGC
CGGTTACCAACAGAACCCTTCTCGGTAGCAGAATTCTCAGAAGCCACCGCTGAAGTACCGTCTCAT
TCACAAACAAAGTCTTCAACTGAGACTTCTAGGAGTATCACCACCAGTCCAAAGGAGTACAGACTCTCC
AGCTGGTCTGCCCGCCAGTACTACACCAAGGGCAACCTGGTCCGGATATGCCTCGGGGCTGTGATCCTA
ATAATCTGGCGGGTTTCTGGCAGAGGACTGGCACAGCCGGAGGAAGCGCTGCCGCACAGGGGCAGGG
CTGTGCAGAGGCCGCTTCCGCCCTGCCGCCCTCCCGCAGACCCGAAATCACACGGGGTCCAGGATGG
AGGCCGACAGGATGTTACAGCCCGGGTTATGTTCA

ACGCGTACGCGGCCGCTCGAGCAGAAACTCATCTCAGAAGAGGATCTGGCAGCAAATGATATCCTGGATT
ACAAGGATGACGACGATAAGGTTTAA



[View online »](#)

Protein Sequence: >RC223897 representing NM_016363
Red=Cloning site Green=Tags(s)

MSPSPTALFCLGLCLGRVPAQSGPLPKPSLQALPSSLVPLEKPVTLRCQPPGVDLYRLEKLSSSRYQDQ
 AVLFIAMKRSLAGRYRCSYQNGSLWLSLPSDQLELVATGVFAKPSLSAQPGPAVSSGGDVTLCQTRYGF
 DQFALYKEGDPAPYKNPERWYRASFPITVTAAHSGTYRCYSFSSRDPYLWSAPSDPLELVVTGTSVTPS
 RLPTEPPSSVAEFSEATAELTVSFTNKVFTTETSRSITTSPKESDSPAGPARQYYTKGNLVRICLGAVIL
 IILAGFLAEDWHSRRKRLRHRGRAVQRPLPPLPLPQTRKSHGGQDGGRRQDVHSRGLCS

TRTRPLEQKLISEEDLAANDILDYKDDDDKV

Chromatograms: https://cdn.origene.com/chromatograms/mk6117_f01.zip

Restriction Sites: SgfI-MluI

Cloning Scheme:



ACCN: NM_016363

ORF Size: 1017 bp

OTI Disclaimer: The molecular sequence of this clone aligns with the gene accession number as a point of reference only. However, individual transcript sequences of the same gene can differ through naturally occurring variations (e.g. polymorphisms), each with its own valid existence. This clone is substantially in agreement with the reference, but a complete review of all prevailing variants is recommended prior to use. [More info](#)

OTI Annotation: This clone was engineered to express the complete ORF with an expression tag. Expression varies depending on the nature of the gene.

Components: The ORF clone is ion-exchange column purified and shipped in a 2D barcoded Matrix tube containing 10ug of transfection-ready, dried plasmid DNA (reconstitute with 100 ul of water).

Reconstitution Method:

1. Centrifuge at 5,000xg for 5min.
2. Carefully open the tube and add 100ul of sterile water to dissolve the DNA.
3. Close the tube and incubate for 10 minutes at room temperature.
4. Briefly vortex the tube and then do a quick spin (less than 5000xg) to concentrate the liquid at the bottom.
5. Store the suspended plasmid at -20°C. The DNA is stable for at least one year from date of shipping when stored at -20°C.

RefSeq: [NM_016363.1](#)

RefSeq Size: 2263 bp

RefSeq ORF: 1020 bp

Locus ID: 51206

UniProt ID: [Q9HCN6](#)

Cytogenetics: 19q13.42

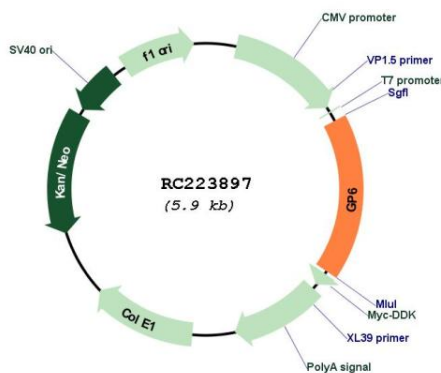
Protein Families: Druggable Genome, Transmembrane

Protein Pathways: ECM-receptor interaction

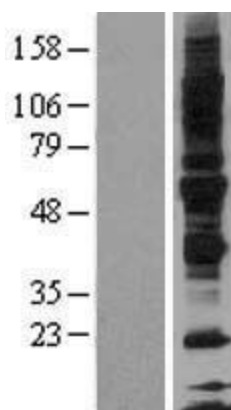
MW: 36.7 kDa

Gene Summary: This gene encodes a platelet membrane glycoprotein of the immunoglobulin superfamily. The encoded protein is a receptor for collagen and plays a critical role in collagen-induced platelet aggregation and thrombus formation. The encoded protein forms a complex with the Fc receptor gamma-chain that initiates the platelet activation signaling cascade upon collagen binding. Mutations in this gene are a cause of platelet-type bleeding disorder-11 (BDPLT11). Alternatively spliced transcript variants encoding multiple isoforms have been observed for this gene. [provided by RefSeq, Dec 2011]

Product images:



Circular map for RC223897



Western blot validation of overexpression lysate (Cat# [LY402548]) using anti-DDK antibody (Cat# [TA50011-100]). Left: Cell lysates from untransfected HEK293T cells; Right: Cell lysates from HEK293T cells transfected with RC223897 using transfection reagent MegaTran 2.0 (Cat# [TT210002]).