

Product datasheet for **RC223896**

DGLUCY (NM_001102367) Human Tagged ORF Clone

Product data:

Product Type:	Expression Plasmids
Product Name:	DGLUCY (NM_001102367) Human Tagged ORF Clone
Tag:	Myc-DDK
Symbol:	DGLUCY
Synonyms:	C14orf159
Mammalian Cell Selection:	Neomycin
Vector:	pCMV6-Entry (PS100001)
E. coli Selection:	Kanamycin (25 ug/mL)



[View online »](#)

ORF Nucleotide Sequence:

>RC223896 ORF sequence
 Red=Cloning site Blue=ORF Green=Tags(s)

TTTTGTAATACGACTCACTATAGGGCGGCCGGGAATTCGTCGACTGGATCCGGTACCGAGGAGATCTGCC
 GCC**CGGATCGCC**

ATGCCCTTCACTCCACCTGAGGTCCCGCTTCCCTCTGCCATAAGGAGTTTATTCTACAAAAGAAAC
 CAAACATCAGAAATACATCCAGCATGGCTGGAGAGCTCCGACCAGCCAGCCTGGTGGTCCTGCCAGGTC
 CCTTGCTCCAGCTTTTGAAGATTCTGCCAGGTCAACTGCTCTACCCCTGCTGGGCCAGAGTGAG
 CCAGAAAAGTGGATGCTGCCCTCAAGGTGCTATCTCAGAGACCAGGATGGGCCATCCCGATTCTGGA
 AATACGAGTTCGGTGCCTGCACCGGTAGCTGGCTTCGCTGGAGCAGTACTCGGAGCAGCTGAAGGACAT
 GGTGGCTTCTTCTGGGCTGCAGCTTCTCCCTGGAGGAGCCTTGAGAAAAGCGGGGCTCCCAAGAGA
 GACCCAGCAGGTACAGCCAGACAACAGTGCCTTGTGTTACCCATGCTGGCTTCTGCTGCCCTCTGGTGG
 TCACGATGAGGCCATTCCAAGACAAGTGAAGGGCTGGTGGGGCTGCTGCTCCCTCGGAGGTGA
 GCAGGGCAACCTGTTACATGGGCGACCCAGAAGTGTGGGAATCAAAGAGCTTCCAACCTGCCTAC
 GGGGATGCCATGGTGTGTCCCAAGGGAGGTTCCAGTGTCTGGCTTCTCCGCTGACCACTCTCGGAG
 CTGTCAGCAGCTGTGAGACCCCACTGGCTTTTGCACGATCCCAGGCTGCACAGTTATGACTGACCTGAA
 GGATGCAAAGGCTCCACCTGGTTGTCTACCCAGAGAGAATTCCAGAGGTCCATCACATTTCCAAGAT
 CCTCTGCACTACAGCATCGCGTCACTCTGCTTCTCAGAAGTCAGAGAAGTAGAGTCTATGATCGGCA
 TAGACCCAGGGAACCGGGGATTGGGCACCTGCTCTGTAAGATGAGCTGCTGAAGGCTCTCTCTCGCT
 GTCCATGCCCGCTCAGTGTCTACCACTGGGTTCCCAACATTTCAATCATGAGCCTCCAGAAGAG
 ACAGATGGCCACCAGGAGCTGTGCTCTGGTTGCCTTCTGAGGCCTTGAGAAAGGAGGTGCGCATAA
 TCGTTGACCAGAGAGCCTGGAACCTGCACCAGAAGATTGTTGAAGATGCTGTTGAGCAAGGTGTTCTGAA
 GACGCAGATCCCGATATTAACCTACCAAGGTGGATCAGTGAAGCTGCTCAGGCATTCTGTGCAAAAAT
 GGGGACCCGACAGACCTAGATTTGACCACCTGGTGGCCATAGAGCGTCCCGAAGAGCTGCTGATGGCA
 ATTACTACAATGCAAGGAAGATGAACATCAAGCACTTGGTTGACCCATTGACGATCTTTTTCTGCTGC
 GAAGAAGATTCTGGAATCTCATCAACTGGAGTCGGTGTGGAGGCAACGAGCTTGGGATGGGTAAGTC
 AAGGAGGCTGTGAGGAGGCACATACGGCACGGGATGTCATCGCCTGCGACTGGAGGCTGACTTTGCCG
 TCATTGCTGGTGTCTAACTGGGAGGCTATGCCCTGGCCTGCGCACTTACATCTGTACTCATGTGC
 TGTCACAGTCAGTACCTGAGGAAAGCAGTCGGACCTCCAGGGCACCTGGAGATCAGGCCTGGACTCAG
 GCCCTCCCGTCGGTCATTAAGGAAGAAAAATGCTGGGCATCTTGGTGCAGCACAAGTCCGGAGTGGCG
 TCTCGGGCATCGTGGGCATGGAGGTGGATGGGCTGCCCTCCACAACACCCACGCCGAGATGATCCAGAA
 GCTGGTGGACGTCACCACGGCACAGTG

ACGCGTACGCGGCCGCTCGAGCAGAACTCATCTCAGAAGAGGATCTGGCAGCAAATGATATCCTGGATT
 ACAAGGATGACGACGATAAGGTTTAA

Protein Sequence:

>RC223896 protein sequence
 Red=Cloning site Green=Tags(s)

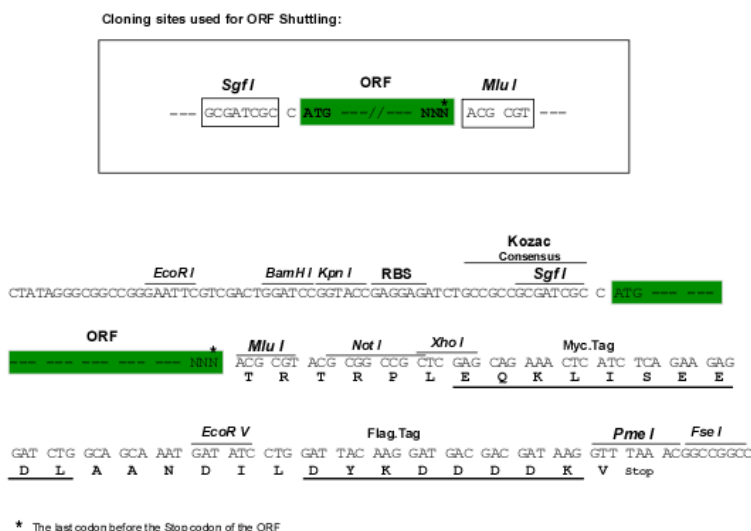
MPFTLHLRSLPSAIRSLILQKKPNIRNTSSMAGELRPASLVVLPRLAPAFERFCQVNTGPLPLLGQSE
 PEKWMLPPQGAISETRMGHPQFWKYEFGACTGSLASLEQYSEQLKDMVAFFLGCFSFLEELEKAGLPRR
 DPAGHSQTTVPCVTHAGFCCLVVTMRPVPKDKLEGLVRACCSLGGEQQPVMHGDPELLGIKELSKPAY
 GDAMVCPPEVVPVFWPSPLTSLGAVSSCETPLAFASIPGCTVMTDLKDAKAPPGLTPERIPVHHISQD
 PLHYSIASVSASQKIRELESIMIGIDPGNRIGHLLCKDELLKASLSL SHARSVLITTFPPTHFNHEPPEE
 TDGPPGAVLVAFLLQALEKEVAIIVDQRAWNLHQKIVEDAVEQGVLTQIPILTYQGGVVEAAQAFCKN
 GDPQTPRFDHLVAIERAGRAADGNYYNARKMNIKHLVDPIDDLFLAAKKIPGISSTGVGDGNELGMGKV
 KEAVRRHIRHGDVIACDVEADFAVIAGVSNWGGYALACALYILYSCAVHSQYLKRAVGPSRAPGDQAWTQ
 ALPSVIKEEKMLGILVQHKVRSVSGVIGMEVDGLPFHNTHAEMIQKLVDTTAQV

TRTRPLEQKLISEEDLAANDILDYKDDDDKV

Chromatograms: https://cdn.origene.com/chromatograms/mk6357_d09.zip

Restriction Sites: SgfI-MluI

Cloning Scheme:



ACCN: NM_001102367

ORF Size: 1848 bp

OTI Disclaimer: The molecular sequence of this clone aligns with the gene accession number as a point of reference only. However, individual transcript sequences of the same gene can differ through naturally occurring variations (e.g. polymorphisms), each with its own valid existence. This clone is substantially in agreement with the reference, but a complete review of all prevailing variants is recommended prior to use. [More info](#)

OTI Annotation: This clone was engineered to express the complete ORF with an expression tag. Expression varies depending on the nature of the gene.

Components: The ORF clone is ion-exchange column purified and shipped in a 2D barcoded Matrix tube containing 10ug of transfection-ready, dried plasmid DNA (reconstitute with 100 ul of water).

Reconstitution Method:

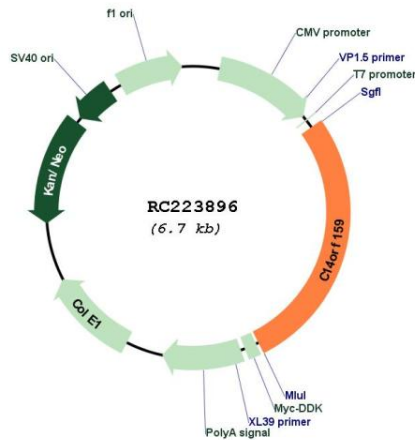
1. Centrifuge at 5,000xg for 5min.
2. Carefully open the tube and add 100ul of sterile water to dissolve the DNA.
3. Close the tube and incubate for 10 minutes at room temperature.
4. Briefly vortex the tube and then do a quick spin (less than 5000xg) to concentrate the liquid at the bottom.
5. Store the suspended plasmid at -20°C. The DNA is stable for at least one year from date of shipping when stored at -20°C.

RefSeq: [NM_001102367.2](#), [NP_001095837.1](#)

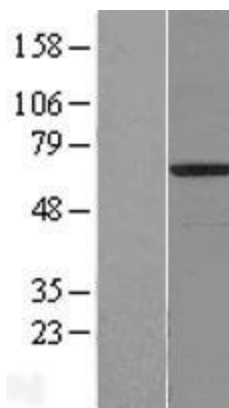
RefSeq Size: 2948 bp

RefSeq ORF: 1851 bp

Locus ID: 80017
UniProt ID: [Q7Z3D6](#)
Cytogenetics: 14q32.11
MW: 66.4 kDa
Gene Summary: D-glutamate cyclase that converts D-glutamate to 5-oxo-D-proline.[UniProtKB/Swiss-Prot Function]

Product images:


Circular map for RC223896



Western blot validation of overexpression lysate (Cat# [LY420134]) using anti-DDK antibody (Cat# [TA50011-100]). Left: Cell lysates from untransfected HEK293T cells; Right: Cell lysates from HEK293T cells transfected with RC223896 using transfection reagent MegaTran 2.0 (Cat# [TT210002]).