

## Product datasheet for **RC223892**

### **GATD3 (NM\_198155) Human Tagged ORF Clone**

#### Product data:

Product Type:	Expression Plasmids
Product Name:	GATD3 (NM_198155) Human Tagged ORF Clone
Tag:	Myc-DDK
Symbol:	GATD3
Synonyms:	C21orf33; ES1; GATD3A; GT335; HES1; KNPH; KNPI
Mammalian Cell Selection:	Neomycin
Vector:	pCMV6-Entry (PS100001)
E. coli Selection:	Kanamycin (25 ug/mL)
ORF Nucleotide Sequence:	>RC223892 representing NM_198155 Red=Cloning site Blue=ORF Green=Tags(s)

TTTTGTAATACGACTCACTATAGGGCGGCCGGAATTCGTCGACTGGATCCGGTACCGAGGAGATCTGCC  
GCC**CGATCGCC**

ATGGCGGCTGTGAGGGTCTGGTGGCCTCGAGGCTCGCTGCGGCATCTGCATTACGTCCCTGTCCCCCG  
GCGGTGCGACGCCTTCCCAGCGCGCAGCCCTTACCTCTCCGTGCCGCGCCCCGCGGCCAGGGTTCGCGCT  
GGTGTCTGCTGGATGCGGAGTCTACGATGGGACCGAGATCCACGAGGCCCTCGCGATCCTGGTGCACCTG  
AGCCGTGGAGGGGCTGAAGTCCAGATCTTTGCTCCTGACGTCCCTCAGATGCACGTGATTGACCACCA  
AGGGGCAGCCGTCGAAGGCGAGAGCAGGAATGTTTTGACCGAGTCTGCGAGGATCGCCCGTGGCAAAT  
CACAGACCTGGCCAACCTCAGTGCAGCCAACCATGATGCTGCCATCTTCCAGGAGGCTTTGGAGCGGCT  
AAAAACCTCTTGTGCTGCATTGCACCTGTCTCGCGGCCAAGGTGCTCAGAGGCGTCGAGGTGACTGTGG  
GCCACGAGCAGGAGGAAGGTGGCAAGTGGCCTTATGCCGGGACCGCAGAGGCCATCAAGGCCCTGGGTGC  
CAAGCACTGCGTGAAGGAAGTGGTGAAGCTCACGTGGACCAGAAAAACAAGGTGGTACGACCCAGCC  
TTCATGTGCGAGACGGCACTCCACTACATCCATGATGGGATCGGAGCCATGGTGAGGAAGGTGCTGGAAC  
TCACTGGAAG

**ACGCGT**ACGCGGCCGCTCGAGCAGAACTCATCTCAGAAGAGGATCTGGCAGCAAATGATATCCTGGATT  
ACAAGGATGACGACGATAAGGTTTAA



[View online »](#)

**Protein Sequence:** >RC223892 representing NM\_198155  
Red=Cloning site Green=Tags(s)

MAAVRVLVASRLAAASAFVSLSPGGRTPSQRAALHLVSPRPAARVALVLSGGVYDGTETHEASAILVHL  
 SRGAEVQIFAPDVPQMHVIDHTKGQPSSEGESRNVLTESARIARGKITDLANLSAANHDAIIFPGGF  
 KNLLCCIAPVLAQVLRGVEVTVGHEQEEGGKWPYAGTAEAIKALGAKHCVKVEVAHVQDKNKVVTTPA  
 FMCETALHYIHDGIGAMVRKVLLELTGK

TRTRPLEQKLISEEDLAANDILDYKDDDDKV

**Chromatograms:** [https://cdn.origene.com/chromatograms/mk6173\\_c09.zip](https://cdn.origene.com/chromatograms/mk6173_c09.zip)

**Restriction Sites:** SgfI-MluI

**Cloning Scheme:**

Cloning sites used for ORF Shuttling:



\* The last codon before the Stop codon of the ORF

**ACCN:** NM\_198155

**ORF Size:** 711 bp

**OTI Disclaimer:** The molecular sequence of this clone aligns with the gene accession number as a point of reference only. However, individual transcript sequences of the same gene can differ through naturally occurring variations (e.g. polymorphisms), each with its own valid existence. This clone is substantially in agreement with the reference, but a complete review of all prevailing variants is recommended prior to use. [More info](#)

**OTI Annotation:** This clone was engineered to express the complete ORF with an expression tag. Expression varies depending on the nature of the gene.

**Components:** The ORF clone is ion-exchange column purified and shipped in a 2D barcoded Matrix tube containing 10ug of transfection-ready, dried plasmid DNA (reconstitute with 100 ul of water).

**Reconstitution Method:**

1. Centrifuge at 5,000xg for 5min.
2. Carefully open the tube and add 100ul of sterile water to dissolve the DNA.
3. Close the tube and incubate for 10 minutes at room temperature.
4. Briefly vortex the tube and then do a quick spin (less than 5000xg) to concentrate the liquid at the bottom.
5. Store the suspended plasmid at -20°C. The DNA is stable for at least one year from date of shipping when stored at -20°C.

**RefSeq:** [NM\\_198155.5](#)

**RefSeq Size:** 1614 bp

**RefSeq ORF:** 714 bp

**Locus ID:** 8209

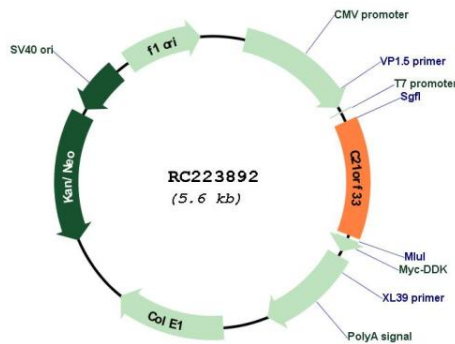
**UniProt ID:** [A0A0B4J2D5](#)

**Cytogenetics:** 21q22.3

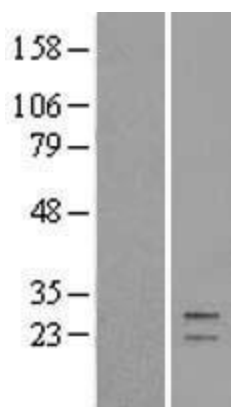
**MW:** 20.6 kDa

**Gene Summary:** This gene encodes a potential mitochondrial protein that is a member of the DJ-1/Pfpl gene family. This protein is overexpressed in fetal Down syndrome brain. Alternate splicing results in multiple transcript variants. [provided by RefSeq, May 2010]

**Product images:**



Circular map for RC223892



Western blot validation of overexpression lysate (Cat# [LY403674]) using anti-DDK antibody (Cat# [TA50011-100]). Left: Cell lysates from untransfected HEK293T cells; Right: Cell lysates from HEK293T cells transfected with RC223892 using transfection reagent MegaTran 2.0 (Cat# [TT210002]).