

Product datasheet for **RC223885**

RHOBTB1 (NM_001032380) Human Tagged ORF Clone

Product data:

Product Type:	Expression Plasmids
Product Name:	RHOBTB1 (NM_001032380) Human Tagged ORF Clone
Tag:	Myc-DDK
Symbol:	RHOBTB1
Synonyms:	1700008H16Rik; 3110048G13Rik; AI173445; AI573858; AV350930; KIAA0740, MGC33059, MGC33841; MGC107538; Rho-related BTB domain containing 1
Mammalian Cell Selection:	Neomycin
Vector:	pCMV6-Entry (PS100001)
E. coli Selection:	Kanamycin (25 ug/mL)



[View online »](#)

ORF Nucleotide
Sequence:

>RC223885 representing NM_001032380
Red=Cloning site Blue=ORF Green=Tags(s)

TTTTGTAATACGACTCACTATAGGGCGGCCGGAATTCGTCGACTGGATCCGGTACCGAGGAGATCTGCC
GCCGCGATCGCC

ATGGACGCTGACATGGACTACGAAAGACCAACGTTGAAACTATCAAATGTGTGGTCGTGGGTGACAATG
CGTGGGGAAGACGCGCTTGATCTGTGCCAGGGGTGCAACACCACACTCACGCAGTATCAGCTGCTGGC
CACCCACGTGCCAACAGTGTGGGCGATTACCAGTACCGCGTGTGCCAGGAGGTCTTGGAGCGTTCTCGG
GATGTTGTTGATGAAGTGAAGTGTCTCTCAGGCTTTGGGATACTTTTGGTGATCATCACAAGACAGAC
GCTTTGCATATGGCAGGTCTGATGTTGTGGTCCTCTGTTTTTCGATTGCTAATCCCAATTCCTAAATCA
TGTGAAAAGCATGTGGTATCCAGAAATCAAGCACTTTTGCCTCGAACACCCGTTATCCTTGTGGGTGC
CAGCTTGATCTCCGCTATGCCGACCTGGAAGCTGTTAATCGAGCCAGGCGCCCGTTAGCAAGGCCATAA
AGAGAGGGGATATTTGCCCCAGAAAAGGCCGAGAGGTAGCAAAGGAACTTGGCTTACCATACTATGA
AACAAAGCTGTTTGACCACTTTGGTATCAAGGATGTGTTTGACAATGCAATCCGAGCAGCGCTGATTTC
CGCAGGCACCTGCAATTCGAAATCCACCTAAAGAAAGTCCAGAAACCTTTACTTCAGGCACCCCTCC
TACCTCCAAAAGCCCTCCACCGGTATCAAAATTCAGAGTGTCTTCCATGGGGACAAATGAAGCTGC
CTGTTTACTGGACAATCCTCTATGTGCCGATGTTCTGTTTCATCCTTCAGGACCAGGAACACATCTTTGCA
CATCGAATTTACCTCGCTACCTCTTCTTCCAAATTTTATGATCTGTTTTAATGGAATGTGAAGAATCCC
CAAATGGGAGTGAAGGAGCCTGTGAGAAAGAGAAGCAGAGCAGAGATTTCCAGGGGCGGATATTGAGTGT
CGACCCAGAGGAAGAAAGGGAGGAGGGCCCGCTAGGATTCCTCAGGCCAGCAGTGAAGTCTTCAAAC
AAGAGCCTGGTGGAGGCTCTGGGCTGGAAGCCGAGGGTGCAGTTCCTGAGACACAGACTTGGCCGGAT
GGAGTAAGGGGTTCAATTGGCATGCACAGGAAATGCAAGTCAACCCATTTCAAAGCGGATGGGGCCCAT
GACTGTGGTCAGGATGGACGCTTCAGTCCAGCCAGGCCCTTTTCGGACCCCTGCTCCAGTTTCTTTATACG
GGACAACCTGGATGAAAAGGAAAAGGATTTGGTGGGCTGGCTCAGATCGCAGAGGTCTCGAGATGTTTCG
ATTTGAGGATGATGGTGGAAAACATCATGAACAAGGAAGCCTTCATGAACCAGGAGATTACGAAAGCCTT
TCACGTAAGGAAAGCCAATCGGATAAAAGAGTGTCTCAGCAAGGGAACGTTCTCGGACGTGACATTTAAA
TTGGACGATGGAGCCATCAGTGCCACAAGCCGCTGCTGATCTGTAGCTGTGAGTGGATGGCAGCCATGT
TCGGGGGGTCATTTGTGGAAAGTGCCAACAGTGAAGTGTATCTCCGAACATAAACAAGATATCAATGCA
AGCAGTATTGGATTATCTCTATAACCAAGCAGTTGTCTCCTAACTGGATCTGGACCCGCTGGAATTAATT
GCCTTGCCAAACAGATTTTGCCTGCCACACTTGGTTGCACTTGCAGAACAGCATGCCGTTCAGGAGTTGA
CCAAGCCGCCACGAGTGGCGTGGGCATTGACGGAGAAGTGTCTCTTACTTGAATTTGGCTCAGTTTCA
CAATGCCACCAGTTGGCCGCTGGTGTGTCACCACATCTGCACCAACTACAACAGTGTATGCTCCAAG
TTCCGTAAGGAAATCAAATCAAATCTGCAGACAACCAGGAATACTTCGAGCGGCACCGCTGGCCCCCTG
TGTGGTACCTGAAGGAAGAAGATCACTACCAGCGTGTGAAAAGGGAACGAGAGAAGGAAGATATTGCACT
AAATAAGCATCGCTCAAGACGAAAGTGGTGCTTCTGGAATTCATCTCCAGCAGTGGCC

ACGCGTACGCGGCCGCTCGAGCAGAACTCATCTCAGAAGAGGATCTGGCAGCAAATGATATCCTGGATT
ACAAGGATGACGACGATAAGGTTTAA

Protein Sequence: >RC223885 representing NM_001032380
Red=Cloning site Green=Tags(s)

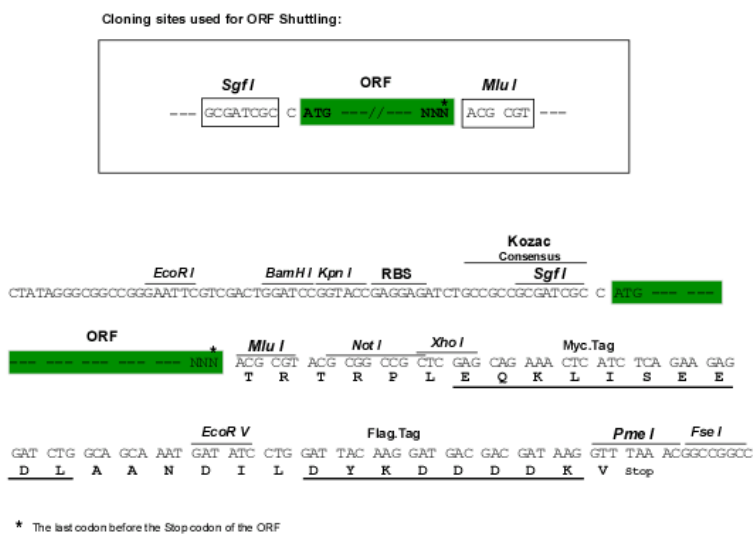
```
MDADMDYERPNETIKCVVVDNAVKGKTRLICARACNTTLTQYQLLATHVPTVWVIDQYRVCQEVLEERSR
DVVDEVSLSRLWDTFGDHHKDRRFAYGRSDVVVLCFSIANPNSLNHVKSMWYPEIKHFCPRTPVILVGC
QLDLRYADLEAVNRARRPLARPIKRGDILPPEKGREVAKEGLPYYETSVFDQFGIKDVFDAIRAALIS
RRHLQFWKSHLKKVQKPLLQAPFLPPKAPPPVIKIEPCPSMGTTNEAACLLDNPLCADVLFILQDQEHIFA
HRIYLATSSSKFYDLFLMECEESPNGSEGACEKEKQSRDFQGRILSVDPEEEREEGPPRIPQADQWKSSN
KSLVEALGLEAEGAVPETQTLTGWSKGFIGMHREMQVNPISKRMGPMTVVRMDASVQPGPFRTLLQFLYT
GQLDEKEKDLVGLAQIAEVLEMFDLMMVENIMNKEAFMNQEIITKAFHVRKANRIKECLSKGTFSDVTFK
LDDGAISAHKPLLICSCWMAAMFGGSFVESANSEVYLPNINKISMQAVLDYLYTKQLSPNLDLPLELI
ALANRFCLPHLVALAEQHAVQELTKAATSGVGIDGCVLSYLELAQFHNAHQLAAWCLHHICTNYSVCSK
FRKEIKSKADNQEYFERHRWPPVWYLKEEDHYQRVREKEDIALNKHSRRKWCWVNSSPAVA
```

TRTRPLEQKLISEEDLAANDILDYKDDDDKV

Chromatograms: https://cdn.origene.com/chromatograms/mk6101_g10.zip

Restriction Sites: SgfI-MluI

Cloning Scheme:



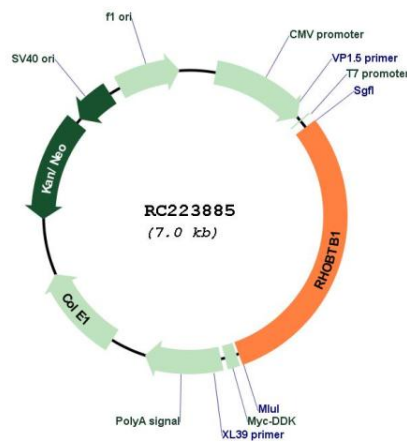
ACCN: NM_001032380

ORF Size: 2088 bp

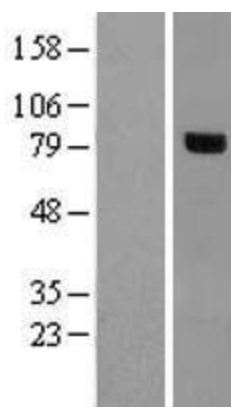
OTI Disclaimer: The molecular sequence of this clone aligns with the gene accession number as a point of reference only. However, individual transcript sequences of the same gene can differ through naturally occurring variations (e.g. polymorphisms), each with its own valid existence. This clone is substantially in agreement with the reference, but a complete review of all prevailing variants is recommended prior to use. [More info](#)

OTI Annotation: This clone was engineered to express the complete ORF with an expression tag. Expression varies depending on the nature of the gene.

Components:	The ORF clone is ion-exchange column purified and shipped in a 2D barcoded Matrix tube containing 10ug of transfection-ready, dried plasmid DNA (reconstitute with 100 ul of water).
Reconstitution Method:	<ol style="list-style-type: none"> 1. Centrifuge at 5,000xg for 5min. 2. Carefully open the tube and add 100ul of sterile water to dissolve the DNA. 3. Close the tube and incubate for 10 minutes at room temperature. 4. Briefly vortex the tube and then do a quick spin (less than 5000xg) to concentrate the liquid at the bottom. 5. Store the suspended plasmid at -20°C. The DNA is stable for at least one year from date of shipping when stored at -20°C.
RefSeq:	<u>NM_001032380.1, NP_001027552.1</u>
RefSeq Size:	4381 bp
RefSeq ORF:	2090 bp
Locus ID:	9886
Cytogenetics:	10q21.2
MW:	79.9 kDa
Gene Summary:	The protein encoded by this gene belongs to the Rho family of the small GTPase superfamily. It contains a GTPase domain, a proline-rich region, a tandem of 2 BTB (broad complex, tramtrack, and bric-a-brac) domains, and a conserved C-terminal region. The protein plays a role in small GTPase-mediated signal transduction and the organization of the actin filament system. Alternate splicing results in multiple transcript variants. [provided by RefSeq, Dec 2008]

Product images:


Circular map for RC223885



Western blot validation of overexpression lysate (Cat# [LY422316]) using anti-DDK antibody (Cat# [TA50011-100]). Left: Cell lysates from untransfected HEK293T cells; Right: Cell lysates from HEK293T cells transfected with RC223885 using transfection reagent MegaTran 2.0 (Cat# [TT210002]).