

Product datasheet for RC223883L1

CGGBP1 (NM_001008390) Human Tagged Lenti ORF Clone

Product data:

Product Type:	Expression Plasmids
Product Name:	CGGBP1 (NM_001008390) Human Tagged Lenti ORF Clone
Tag:	Myc-DDK
Symbol:	CGGBP1
Synonyms:	CGGBP; p20-CGGBP
Mammalian Cell Selection:	None
Vector:	pLenti-C-Myc-DDK (PS100064)
E. coli Selection:	Chloramphenicol (34 ug/mL)
ORF Nucleotide Sequence:	The ORF insert of this clone is exactly the same as(RC223883).
Restriction Sites:	SgfI-MluI
Cloning Scheme:	

Cloning sites used for ORF Shuttling:



* The last codon before the Stop codon of the ORF.

ACCN:	NM_001008390
ORF Size:	501 bp



[View online »](#)

OTI Disclaimer: Due to the inherent nature of this plasmid, standard methods to replicate additional amounts of DNA in E. coli are highly likely to result in mutations and/or rearrangements. Therefore, OriGene does not guarantee the capability to replicate this plasmid DNA. Additional amounts of DNA can be purchased from OriGene with batch-specific, full-sequence verification at a reduced cost. Please contact our customer care team at custsupport@origene.com or by calling 301.340.3188 option 3 for pricing and delivery.

The molecular sequence of this clone aligns with the gene accession number as a point of reference only. However, individual transcript sequences of the same gene can differ through naturally occurring variations (e.g. polymorphisms), each with its own valid existence. This clone is substantially in agreement with the reference, but a complete review of all prevailing variants is recommended prior to use. [More info](#)

OTI Annotation: This clone was engineered to express the complete ORF with an expression tag. Expression varies depending on the nature of the gene.

Components: The ORF clone is ion-exchange column purified and shipped in a 2D barcoded Matrix tube containing 10ug of transfection-ready, dried plasmid DNA (reconstitute with 100 ul of water).

Reconstitution Method:

1. Centrifuge at 5,000xg for 5min.
2. Carefully open the tube and add 100ul of sterile water to dissolve the DNA.
3. Close the tube and incubate for 10 minutes at room temperature.
4. Briefly vortex the tube and then do a quick spin (less than 5000xg) to concentrate the liquid at the bottom.
5. Store the suspended plasmid at -20°C. The DNA is stable for at least one year from date of shipping when stored at -20°C.

RefSeq: [NM_001008390.1](#)

RefSeq Size: 4608 bp

RefSeq ORF: 504 bp

Locus ID: 8545

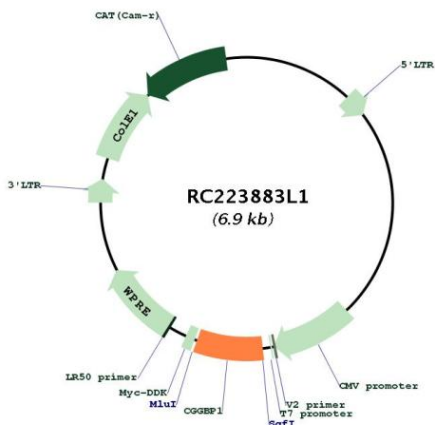
UniProt ID: [Q9UFW8](#)

Cytogenetics: 3p11.1

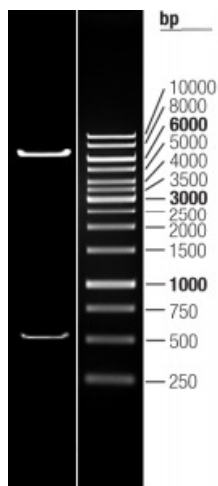
MW: 18.8 kDa

Gene Summary: This gene encodes a CGG repeat-binding protein that primarily localizes to the nucleus. CGG trinucleotide repeats are implicated in many disorders as they often act as transcription- and translation-regulatory elements, can produce hairpin structures which cause DNA replication errors, and form regions prone to chromosomal breakage. CGG repeats are also targets for CpG methylation. In addition to its ability to bind CGG repeats and regulate transcription, this gene is believed to play a role in DNA damage repair and telomere protection. In vitro studies indicate this protein does not bind to methylated CpG sequences. [provided by RefSeq, Jul 2017]

Product images:



Circular map for RC223883L1



Double digestion of RC223883L1 using SgfI and MluI