

Product datasheet for RC223880

SERPINB8 (NM_002640) Human Tagged ORF Clone

Product data:

Product Type:	Expression Plasmids
Product Name:	SERPINB8 (NM_002640) Human Tagged ORF Clone
Tag:	Myc-DDK
Symbol:	SERPINB8
Synonyms:	C18orf53; CAP2; PI-8; PI8; PSS5
Mammalian Cell Selection:	Neomycin
Vector:	pCMV6-Entry (PS100001)
E. coli Selection:	Kanamycin (25 ug/mL)
ORF Nucleotide Sequence:	>RC223880 representing NM_002640 Red=Cloning site Blue=ORF Green=Tags(s)

TTTTGTAATACGACTCACTATAGGGCGCCGGGAATTCGTCGACTGGATCCGGTACCGAGGAGATCTGCC
GCC**CGATCGCC**

ATGGATGACCTCTGTGAAGCAAATGGCACTTTTGCCATCAGCTTATTTAAAATATTGGGGGAAGAGGACA
ACTCAAGAAACGTATTCTTCTCTCCCATGAGCATCTCTCTGCCCTGGCCATGGTCTTCATGGGGGCAA
GGGAAGCACTGCAGCCCAGATGTCCAGGCACTTTGTTTATACAAAGACGGAGATATCCCGAGGTTTC
CAGTCACTTCTCAGTGAAGTTAACAGAAGTGGCACTCAGTACTTGCTTAGAACTGCCAACAGACTCTTTG
GAGAAAAGACGTGTGATTTCTTCCAGACTTTAAAGAATACTGTCAGAAGTTCTATCAGGCAGAGCTGGA
GGAGTTGTCTTTGCTGAAGACTGAAGAGTGCAGGAAGCATATAAATGACTGGGTGGCAGAGAAGACT
GAAGGTAAGATTTAGAGGACTGGATGCTGGGACAGTCGATCCCTGACAAAGCTAGTCTTTGTAATG
CCATTTATTTCAAGGGAAAGTGAATGAGCAATTTGACAGAAAGTACACAAGGGGAATGCTCTTTAAAC
CAACGAGGAAAAAAGACAGTGCAGATGATGTTAAGGAAGCTAAGTTTAAAATGGGGTATGCGGATGAG
GTACACACCCAGGTCTGGAGCTGCCATGTGGAAGAGGAGCTGAGCATGGTCATTCTGCTTCCCGATG
ACAACACGGACCTCGCCGTGGTGGAAAAAGCACTTACATATGAGAAATTCAAAGCCTGGACAAATTCAGA
AAAGTTGACAAAAAGTAAAGTTCAAGTTTCTTCCCAGATTAAGCTGGAGGAGATTAAGTCTGGAGT
CTGAGAAGAATGTGCCTCTGTCCAAGTTGCTCACAAGTCTTCTGGAGGTCATGAGGAAGGCACAGA
GGCTGCCGACCCACTGCTGTGGTCAAGATTCGCCGTGCAGCAGAATGGAGCCAAGATTCTGTGCAGAC
CACCTTTTCTTTCTTCATCAGGCGCCACAAAACCAACTGCATCTTGTCTGTGGCAGGTTCTCTTCTC
CG

ACGCGTACGCGGCCGCTCGAGCAGAAACTCATCTCAGAAGAGGATCTGGCAGCAAATGATATCCTGGATT
ACAAGGATGACGACGATAAGGTTTAA



[View online »](#)

Reconstitution Method:

1. Centrifuge at 5,000xg for 5min.
2. Carefully open the tube and add 100ul of sterile water to dissolve the DNA.
3. Close the tube and incubate for 10 minutes at room temperature.
4. Briefly vortex the tube and then do a quick spin (less than 5000xg) to concentrate the liquid at the bottom.
5. Store the suspended plasmid at -20°C. The DNA is stable for at least one year from date of shipping when stored at -20°C.

RefSeq: [NM_002640.4](#)

RefSeq Size: 3390 bp

RefSeq ORF: 1125 bp

Locus ID: 5271

UniProt ID: [P50452](#)

Cytogenetics: 18q22.1

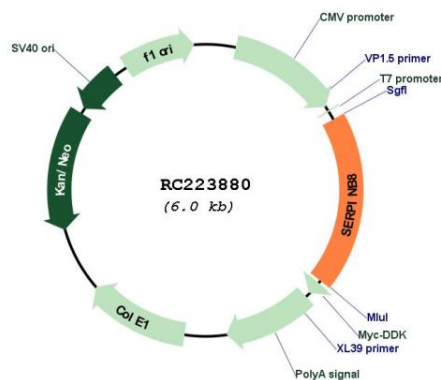
Domains: SERPIN

Protein Families: Druggable Genome

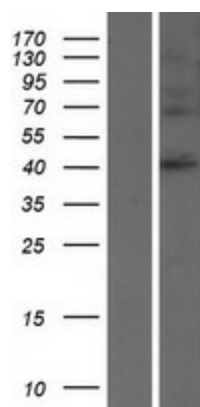
MW: 42.6 kDa

Gene Summary: The protein encoded by this gene is a member of the ov-serpin family of serine protease inhibitors. The encoded protein is produced by platelets and can bind to and inhibit the function of furin, a serine protease involved in platelet functions. In addition, this protein has been found to enhance the mechanical stability of cell-cell adhesion in the skin, and defects in this gene have been associated with an autosomal-recessive form of exfoliative ichthyosis. [provided by RefSeq, Jan 2017]

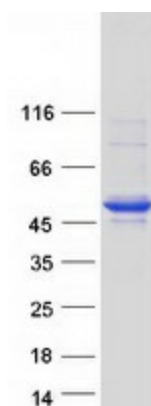
Product images:



Circular map for RC223880



Western blot validation of overexpression lysate (Cat# [LY419193]) using anti-DDK antibody (Cat# [TA50011-100]). Left: Cell lysates from untransfected HEK293T cells; Right: Cell lysates from HEK293T cells transfected with RC223880 using transfection reagent MegaTran 2.0 (Cat# [TT210002]).



Coomassie blue staining of purified SERPINB8 protein (Cat# [TP323880]). The protein was produced from HEK293T cells transfected with SERPINB8 cDNA clone (Cat# RC223880) using MegaTran 2.0 (Cat# [TT210002]).